

Table 1: Undergraduate Students Admission by Programme, Gender and Academic Year

Academic Year		1994			1995			1996			1997		
Programme	Gender	M	F	T	M	F	T	M	F	T	M	F	T
B.A.(Gen.)		173	15	188	47	4	51	54	7	61	45	5	50
B.A.(Ed.)		318	41	359	104	23	127	167	25	192	115	18	133
B.Com.(Gen.)		184	11	195	90	5	95	149	12	161	92	13	105
B.Com.(Ed.)		24	0	24	17	0	17	32	7	39	16	2	18
B. Ed.		0	0	0	0	0	0	0	0	0	0	0	0
LL.B		0	0	0	329	26	355	445	36	481	300	33	333
B.Sc.(Gen.)		0	0	0	30	2	32	67	7	74	63	7	70
B.Sc.(Ed.)		0	0	0	51	10	61	85	8	93	38	8	46
BBA (Gen.)		0	0	0	0	0	0	0	0	0	0	0	0
BBA (Ed.)		0	0	0	0	0	0	0	0	0	0	0	0
B.A.T		0	0	0	0	0	0	0	0	0	0	0	0
B.Sc.(ICT)		0	0	0	0	0	0	0	0	0	0	0	0
B. Ed. (SE)		0	0	0	0	0	0	0	0	0	0	0	0
B.A.(SW)		0	0	0	0	0	0	0	0	0	0	0	0
B.A.(Soc.)		0	0	0	0	0	0	0	0	0	0	0	0
B.A.J		0	0	0	0	0	0	0	0	0	0	0	0
B.A.(Mass Com.)		0	0	0	0	0	0	0	0	0	0	0	0
B.Sc.(ES)		0	0	0	0	0	0	0	0	0	0	0	0
Total		699	67	766	668	70	738	999	102	1101	669	86	755

Source: Statistics Section

Table 1 Cont...

Academic Year		1998			1999			2000			2001			2002		
Programme	Gender	M	F	T	M	F	T	M	F	T	M	F	T	M	F	T
B.A.(Gen.)		50	5	55	39	3	42	35	8	43	48	14	62	56	28	84
B.A.(Ed.)		112	24	136	128	27	155	104	43	147	205	73	278	234	92	326
B.Com.(Gen.)		80	8	88	76	6	82	46	9	55	91	17	108	126	25	151
B.Com.(Ed.)		20	3	23	21	1	22	1	1	2	14	7	21	19	8	27
B. Ed.		0	0	0	0	0	0	0	0	0	106	37	143	139	52	191
LL.B		260	35	295	194	13	207	228	24	252	316	44	360	290	57	347
B.Sc.(Gen.)		77	10	87	47	8	55	85	25	110	109	18	127	91	20	111
B.Sc.(Ed.)		49	14	63	47	9	56	52	14	66	95	15	110	85	18	103
BBA (Gen.)		0	0	0	0	0	0	0	0	0	0	0	0	0	0	0
BBA (Ed.)		0	0	0	0	0	0	0	0	0	0	0	0	0	0	0
B.A.T		0	0	0	0	0	0	0	0	0	0	0	0	0	0	0
B.Sc.(ICT)		0	0	0	0	0	0	0	0	0	0	0	0	0	0	0
B Ed. (SE)		0	0	0	0	0	0	0	0	0	0	0	0	0	0	0
B.A.(SW)		0	0	0	0	0	0	0	0	0	0	0	0	0	0	0
B.A.(Soc.)		0	0	0	0	0	0	0	0	0	0	0	0	0	0	0
B.A.J		0	0	0	0	0	0	0	0	0	0	0	0	0	0	0
B.A.(Mass Com.)		0	0	0	0	0	0	0	0	0	0	0	0	0	0	0
B.SC.(ES)		0	0	0	0	0	0	0	0	0	0	0	0	0	0	0
Total		648	99	747	552	67	619	551	124	675	984	225	1209	1040	300	1340

Table 1 Cont...

Academic Year		2003			2004			2005			2006			2007		
Programme	Gender	M	F	T	M	F	T	M	F	T	M	F	T	M	F	T
B.A.(Gen.)		77	21	98	115	50	165	167	74	241	185	122	307	260	86	346
B.A.(Ed.)		296	146	442	312	131	443	385	160	545	401	181	582	1204	495	1699
B.Com.(Gen.)		0	0	0	0	0	0	0	0	0	95	32	127	147	32	179
B.Com.(Ed.)		0	0	0	0	0	0	0	0	0	6	3	9	98	21	119
B. Ed.		195	99	294	267	127	394	468	196	664	597	337	934	841	364	1205
LL.B		251	42	293	283	68	351	326	81	407	378	102	480	401	79	480
B.Sc.(Gen.)		93	26	119	119	50	169	113	49	162	164	94	258	183	54	237
B.Sc.(Ed.)		72	14	86	94	20	114	119	24	143	113	27	140	537	122	659
BBA (Gen.)		160	38	198	209	45	254	334	61	395	344	97	441	299	65	364
BBA (Ed.)		33	4	37	20	10	30	36	24	60	40	9	49	83	23	106
B.A.T		0	0	0	0	0	0	29	6	35	87	21	108	38	13	51
B.Sc.(ICT)		0	0	0	0	0	0	0	0	0	16	1	17	25	4	29
B. Ed. (SE)		0	0	0	0	0	0	26	14	40	0	0	0	0	0	0
B.A.(SW)		0	0	0	0	0	0	0	0	0	2	3	5	27	32	59
B.A.(Soc.)		0	0	0	0	0	0	0	0	0	4	6	10	83	52	135
B.A.J		0	0	0	0	0	0	0	0	0	0	0	0	0	0	0
B.A.(Mass Com.)		0	0	0	0	0	0	0	0	0	0	0	0	0	0	0
B.SC.(ES)		0	0	0	0	0	0	0	0	0	0	0	0	0	0	0
Total		1177	390	1567	1419	501	1920	2003	689	2692	2432	1035	3467	4226	1442	5668

Table 1 Cont...

Academic Year		2007/08			2008/09			Cumulative Total		
Programme	Gender	M	F	T	M	F	T	M	F	T
B.A.(Gen.)		167	52	219	211	56	267	1729	550	2279
B.A.(Ed.)		543	228	771	413	188	601	5041	1895	6936
B.Com.(Gen.)		40	8	48	0	0	0	1216	178	1394
B.Com.(Ed.)		53	12	65	0	0	0	321	65	386
B. Ed.		377	198	575	460	268	728	3450	1678	5128
LL.B		119	32	151	284	55	339	4404	727	5131
B.Sc.(Gen.)		92	22	114	116	32	148	1449	424	1873
B.Sc.(Ed.)		214	45	259	148	27	175	1799	375	2174
BBA (Gen.)		59	14	73	366	89	455	1771	409	2180
BBA (Ed.)		23	6	29	111	28	139	346	104	450
B.A.T		48	10	58	70	11	81	272	61	333
B.Sc.(ICT)		25	3	28	55	5	60	121	13	134
B. Ed. (SE)		4	1	5	8	3	11	38	18	56
B.A.(SW)		25	31	56	47	43	90	101	109	210
B.A.(Soc.)		53	61	114	103	84	187	243	203	446
B.A.J		0	0	0	20	5	25	20	5	25
B.A.(Mass Com.)		0	0	0	68	30	98	68	30	98
B.SC.(ES)		0	0	0	86	16	102	86	16	102
Total		1842	723	2565	2566	940	3506	22475	6860	29335

Table 1 indicates a fluctuating enrolment trend from the year 1994 when student admission commenced at the University, to the year 1999. Thereafter it reflects an increasing trend to the year 2007. The figures for academic year 2007/08 reflect the change of the academic year with exclusion of January 2007 enrolments. The year 2008/09 reflects 36.7% increase in enrolment after one year of change of the Academic Year.

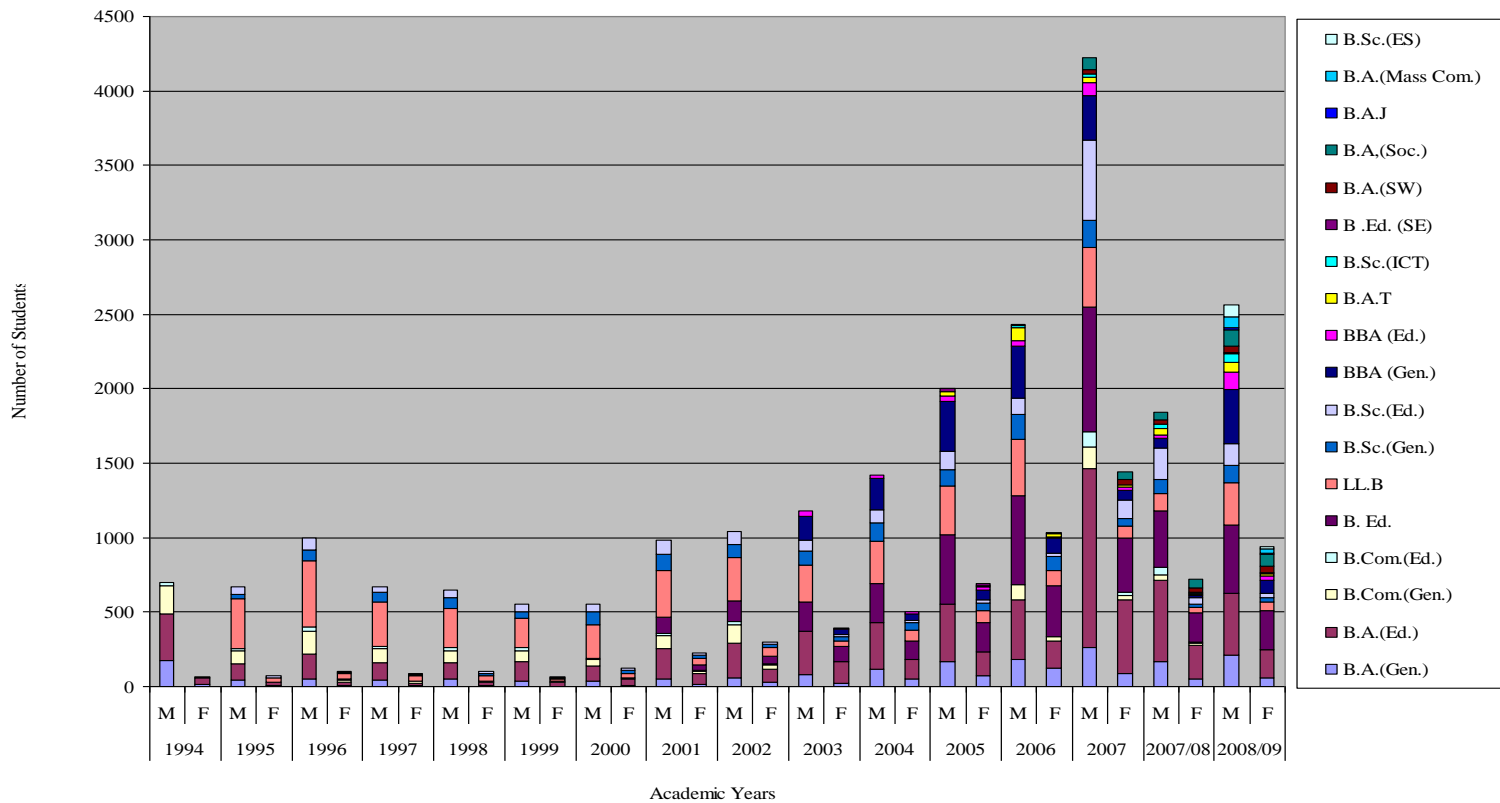


Fig. 1 (a): Undergraduate Admission by Programme, Gender and Academic Year

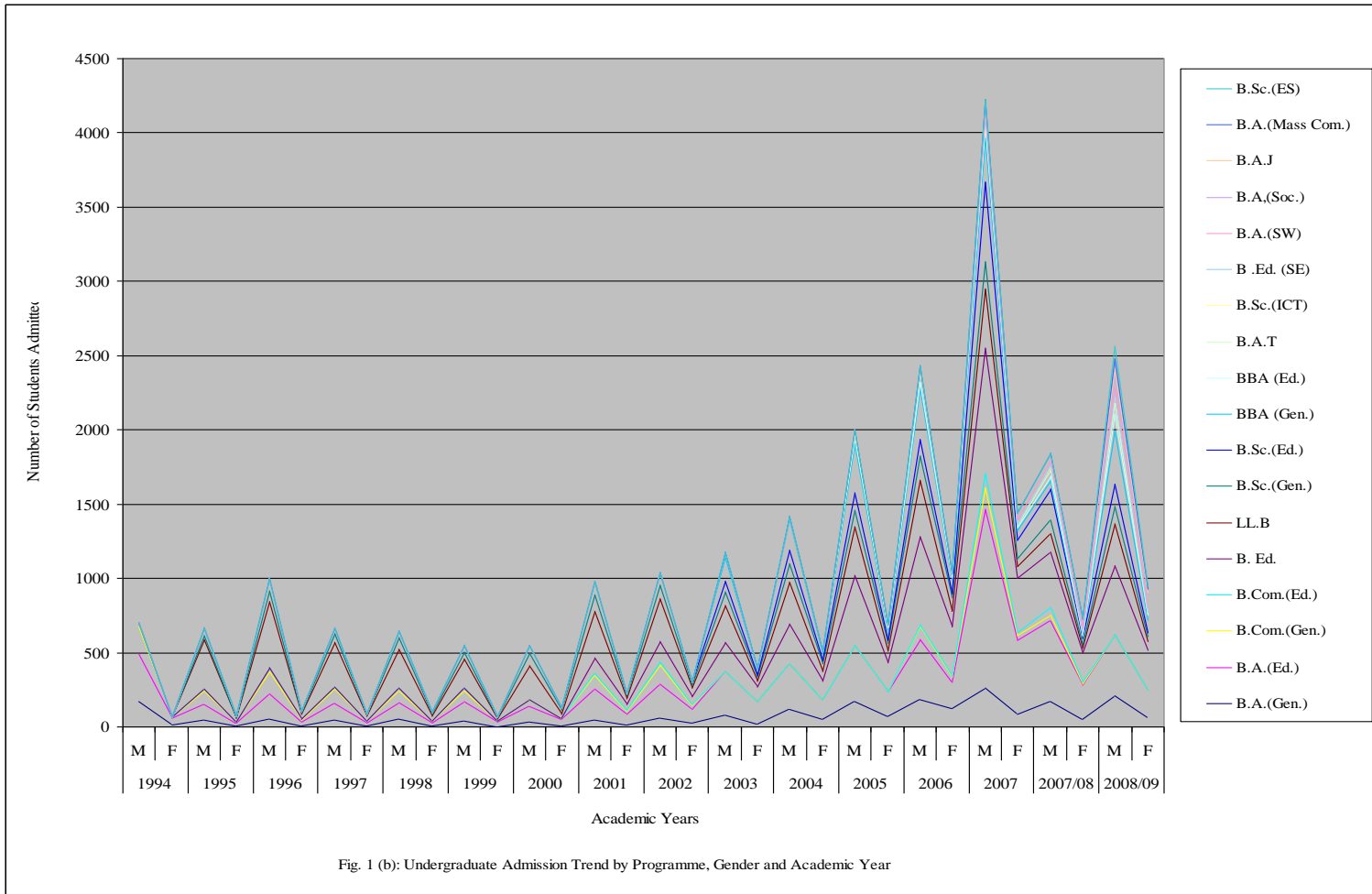


Fig. 1 (b): Undergraduate Admission Trend by Programme, Gender and Academic Year

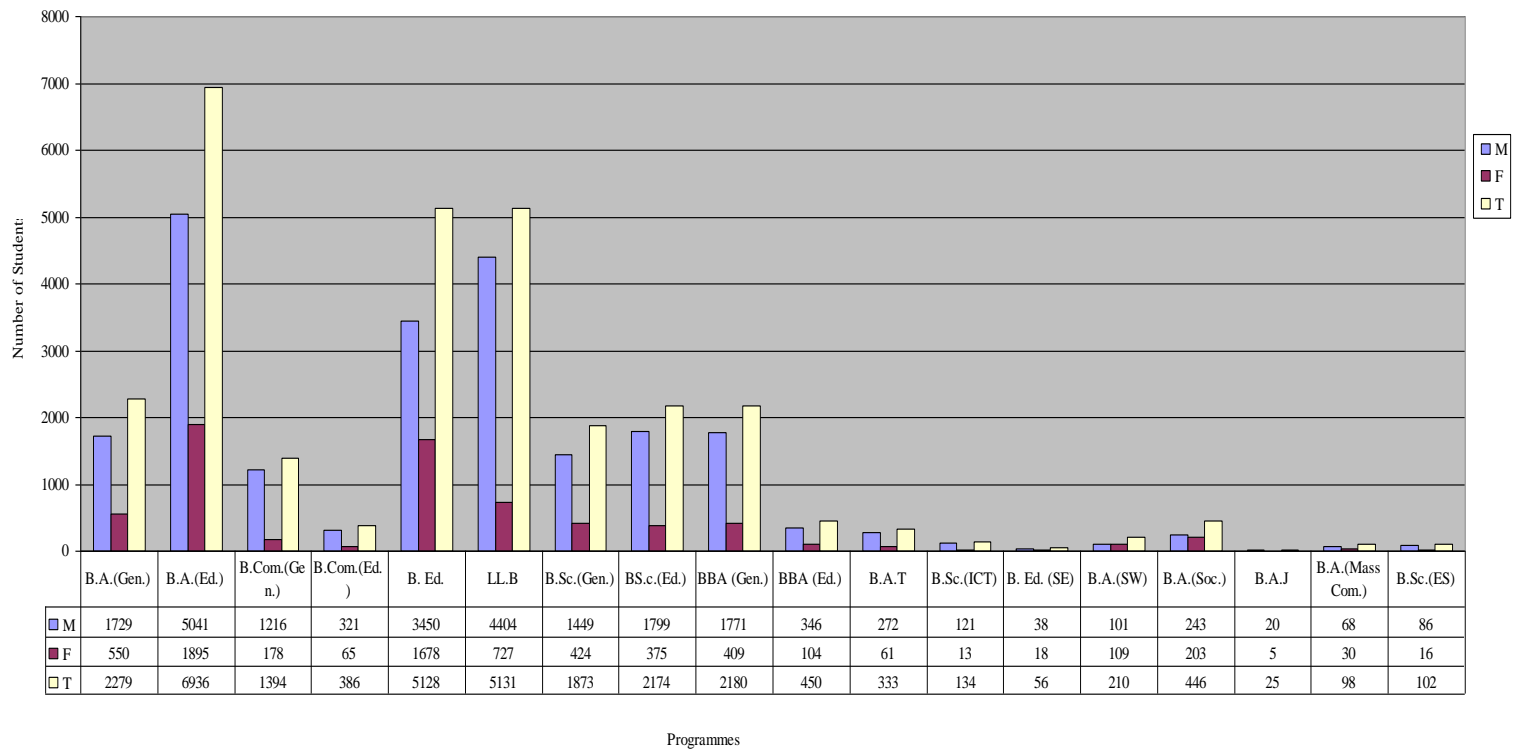


Fig. 1 (c): Undergraduate Cumulative Admission by Programme and Gender From 1994 - 2008/09

Figure 1(c) reveals that the highest cumulative admission was in the BA (Ed) programme for both male and female students.

Table 2: Undergraduate Female Students as Percentage of Total Undergraduate Admission by Programme Academic Year and Gender

Academic Year	1994	1995	1996	1997	1998	1999	2000	2001	2002	2003	2004	2005	2006	2007	2007/08	2008/09
Programme	%F	%F	%F	%F	%F	%F	%F	%F	%F	%F	%F	%F	%F	%F	%F	%F
B.A.(Gen.)	8.0	7.8	11.5	10.0	9.1	7.1	18.6	.22.6	33.3	21.4	30.3	30.7	39.7	24.9	23.7	21.0
B.A.(Ed.)	11.4	18.1	13.0	13.5	17.6	17.4	29.3	26.3	28.2	33.0	29.6	29.4	31.1	29.1	29.6	31.3
B.Com.(Gen.)	5.6	5.3	7.5	12.4	0.1	7.3	16.4	15.7	16.6	0.0	0.0	0.0	25.2	17.9	16.7	0.0
B.Com.(Ed.)	0.0	0.0	17.9	11.1	13.0	4.5	50.0	33.3	29.6	0.0	0.0	0.0	33.3	17.6	18.5	0.0
B. Ed	0.0	0.0	0.0	0.0	0.0	0.0	0.0	25.9	27.2	33.7	32.2	29.5	36.1	30.2	34.4	36.8
LL.B	0.0	7.3	7.5	9.9	11.9	6.3	9.5	12.2	16.4	14.3	19.4	19.9	21.3	16.5	21.2	16.2
B.Sc.(Gen.)	0.0	6.3	9.5	17.4	11.5	14.5	22.7	14.2	18.0	21.8	29.6	30.2	37.3	22.8	19.3	21.6
B.Sc.(Ed.)	0.0	16.4	8.6	0.0	22.2	16.1	21.2	13.6	17.5	16.3	17.5	16.8	19.3	18.5	17.4	15.4
BBA (Gen.)	0.0	0.0	0.0	0.0	0.0	0.0	0.0	0.0	0.0	19.2	17.7	15.4	22.0	17.9	19.2	19.6
BBA (Ed.)	0.0	0.0	0.0	0.0	0.0	0.0	0.0	0.0	0.0	10.8	33.3	40.0	18.4	21.7	20.7	20.1
B.A.T	0.0	0.0	0.0	0.0	0.0	0.0	0.0	0.0	0.0	0.0	0.0	17.1	19.4	25.5	17.2	13.6
B.Sc.(ICT)	0.0	0.0	0.0	0.0	0.0	0.0	0.0	0.0	0.0	0.0	0.0	0.0	5.9	13.8	10.7	8.3
B. Ed. (SE)	0.0	0.0	0.0	0.0	0.0	0.0	0.0	0.0	0.0	0.0	0.0	35.0	0.0	0.0	20.0	27.3
B.A.(SW)	0.0	0.0	0.0	0.0	0.0	0.0	0.0	0.0	0.0	0.0	0.0	0.0	60.0	54.2	55.4	47.8
B.A.(Soc.)	0.0	0.0	0.0	0.0	0.0	0.0	0.0	0.0	0.0	0.0	0.0	0.0	60.0	38.5	53.9	44.9
B.A.J	0.0	0.0	0.0	0.0	0.0	0.0	0.0	0.0	0.0	0.0	0.0	0.0	0.0	0.0	0.0	20.0
B.A.(Mass Com)	0.0	0.0	0.0	0.0	0.0	0.0	0.0	0.0	0.0	0.0	0.0	0.0	0.0	0.0	0.0	30.6
B.Sc.(ES)	0.0	0.0	0.0	0.0	0.0	0.0	0.0	0.0	0.0	0.0	0.0	0.0	0.0	0.0	0.0	15.6
Average	8.3	10.2	10.8	12.4	12.2	10.5	24.0	20.5	23.4	21.3	26.2	26.4	30.6	24.9	25.2	24.4

Source: Computed from Table 1

Table 2 portrays the percentage performance in female undergraduate student admission into various programmes. The overall percentage seems to increase from 8.3% in 1994 to 10.5% in the academic year 1999. Also the table shows that for the period of 10 years from the academic year 2000 to the academic year 2008/09 female undergraduate enrolment has been somewhere between 20 and 31 percent.

Table 3: Undergraduate Students Admission by Faculty, Gender and Academic Year

Academic Year		1994			1995			1996			1997		
Faculty	Gender	M	F	T	M	F	T	M	F	T	M	F	T
FASS		491	56	547	151	27	178	221	32	253	160	23	183
FBM		208	11	219	107	5	112	181	19	200	108	15	123
FED		0	0	0	0	0	0	0	0	0	0	0	0
FLW		0	0	0	329	26	355	445	36	481	300	33	333
FSTES		0	0	0	81	12	93	152	15	167	101	15	116
Total		699	67	766	668	70	738	999	102	1101	669	86	755

Source: Statistics Section

Table 3 Cont...

Academic Year		1998			1999			2000			2001			2002		
Faculty	Gender	M	F	T	M	F	T	M	F	T	M	F	T	M	F	T
FASS		162	29	191	167	30	197	139	51	190	253	87	340	290	120	410
FBM		100	11	111	97	7	104	47	10	57	105	24	129	145	33	178
FED		0	0	0	0	0	0	0	0	0	106	37	143	139	52	191
FLW		260	35	295	194	13	207	228	24	252	316	44	360	290	57	347
FSTES		126	24	150	94	17	111	137	39	176	204	33	237	176	38	214
Total		648	99	747	552	67	619	551	124	675	984	225	1209	1040	300	1340

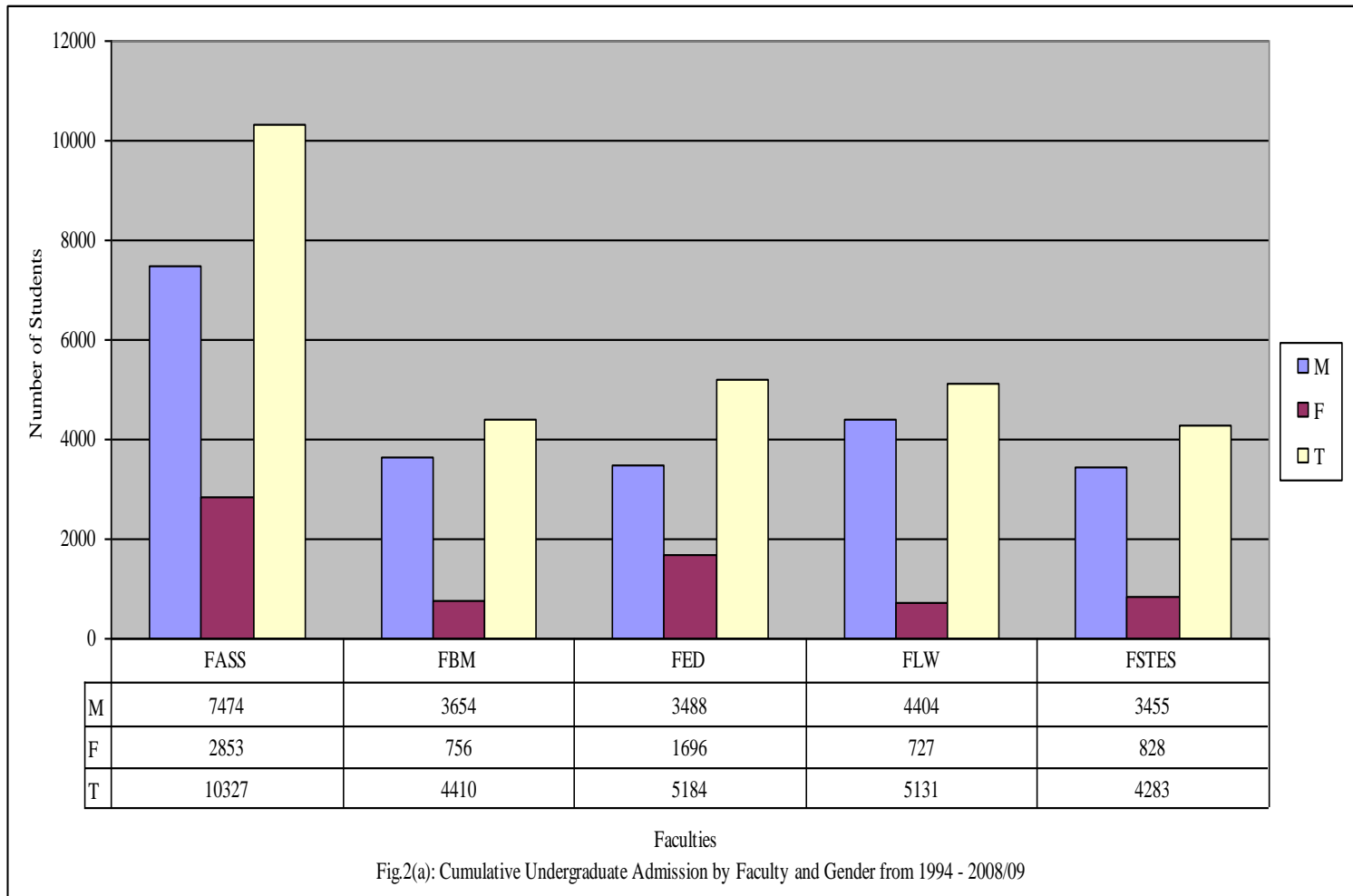
Table 3 Cont...

Academic Year		2003			2004			2005			2006		
Faculty	Gender	M	F	T	M	F	T	M	F	T	M	F	T
FASS		373	167	540	427	181	608	581	240	821	679	333	1012
FBM		193	42	235	229	55	284	370	85	455	485	141	626
FED		195	99	294	267	127	394	494	210	704	596	337	933
FLW		251	42	293	283	68	351	326	81	407	378	102	480
FSTES		165	40	205	213	70	283	232	73	305	287	122	409
Total		1177	390	1567	1419	501	1920	2003	689	2692	2425	1035	3460

Table 3 Cont...

Academic Year		2007			2007/08			2008/09			Grand Total		
Faculty	Gender	M	F	T	M	F	T	M	F	T	M	F	T
FASS		1612	678	2290	836	382	1218	932	417	1349	7474	2853	10327
FBM		627	141	768	175	40	215	477	117	594	3654	756	4410
FED		841	364	1205	381	199	580	468	271	739	3488	1696	5184
FLW		401	79	480	119	32	151	284	55	339	4404	727	5131
FSTES		745	180	925	331	70	401	405	80	485	3455	828	4283
Total		4226	1442	5668	1842	723	2565	2566	940	3506	22475	6860	29335

Table 3 portrays a fluctuating enrolment trend in various faculties during the first six years of the University. Thereafter shows an increasing trend, signifying an increase in its recognition and public awareness



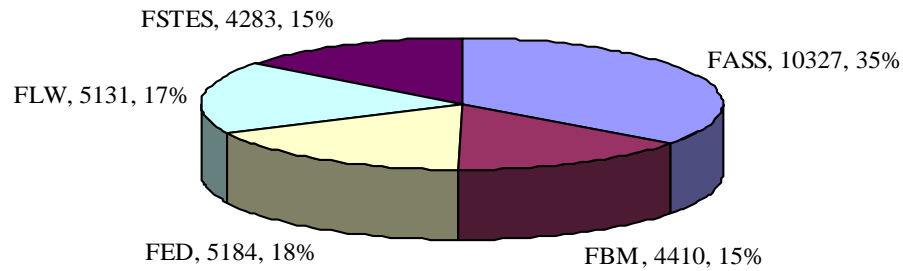
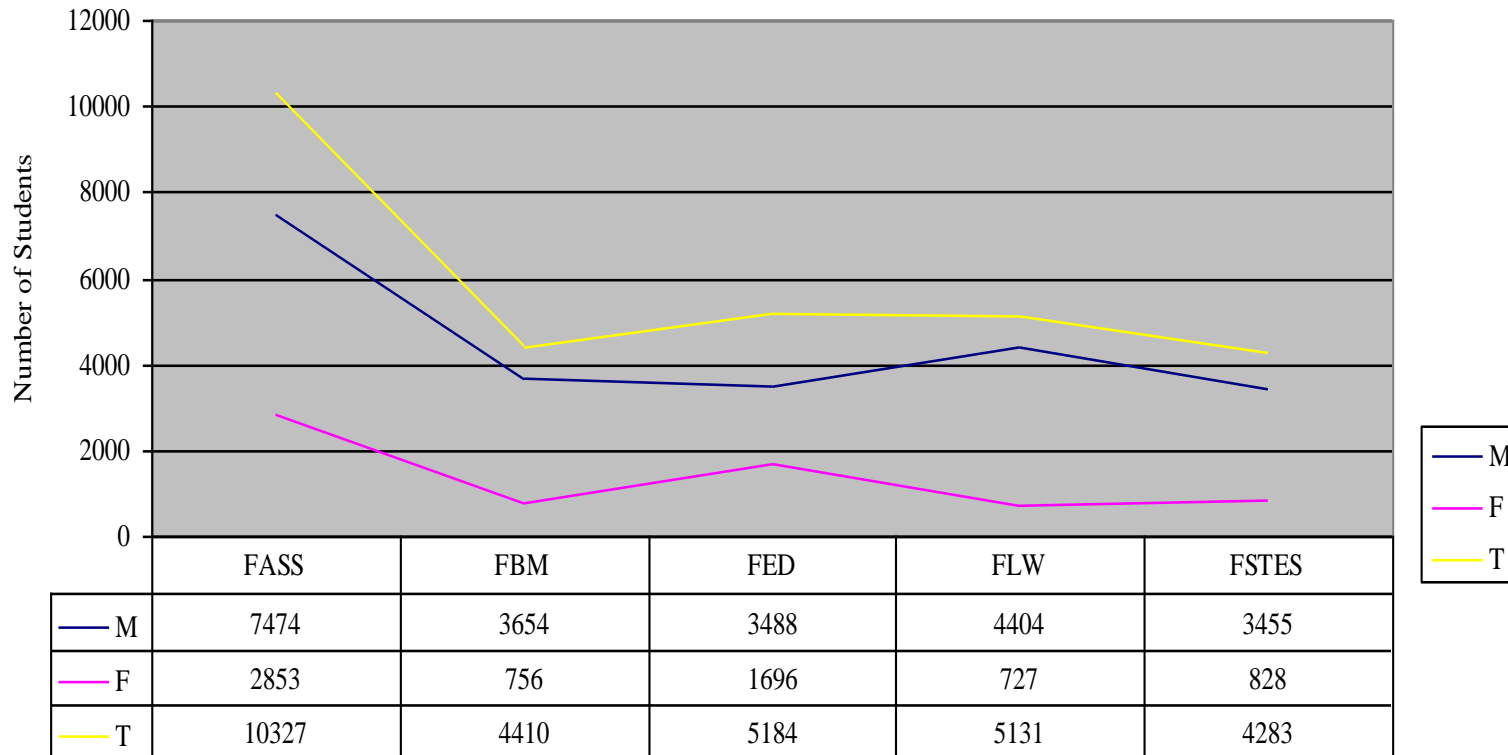


Fig. 2(b): Cumulative Undergraduate Students Admissions by Faculty and Percentage From 1994 - 2008/09

Fig. 2(a) and 2(b) portray cumulative undergraduate students admission by faculty from the Academic Year 1994 to the Academic Year 2008/09, with highest admission records and percentage in the Faculty of Arts and Social Sciences (FASS) followed by Faculty of Education, with cumulative admission of 10327 and 5184 students respectively.



Faculties

Fig. 2(c): Cumulative Undergraduate Students Admission Trend by Faculty From 1994 - 2008/09

Table 4: Female Undergraduate Students as Percentage of Total Admission by Faculty and Year

Faculty	1994	1995	1996	1997	1998	1999	2000	2001	2002	2003	2004	2005	2006	2007	2007/08	2008/09	Average
	%F	%F	%F	%F	%F	%F	%F	%F	%F	%F	%F	%F	%F	%F	%F	%F	
FASS	10.2	15.2	12.6	12.6	15.2	15.2	26.8	25.6	29.3	30.9	29.8	29.2	32.9	29.6	30.9	31.1	21.7
FBM	5.0	4.5	9.5	12.2	9.9	6.7	17.5	18.6	18.5	17.9	19.4	18.7	22.5	18.4	19.7	19.7	14.9
FED	0.0	0.0	0.0	0.0	0.0	0.0	0.0	25.9	27.2	33.7	32.2	29.8	36.1	30.2	36.7	36.9	32.1
FLW	0.0	7.3	7.5	9.9	11.9	6.3	9.5	12.2	16.4	14.3	19.4	19.9	21.3	16.5	16.2	16.8	13.7
FSTES	0.0	12.9	9.0	12.9	16.0	15.3	22.2	13.9	17.8	19.5	24.7	23.9	29.8	19.5	16.5	16.2	18.0
Total	7.6	10.0	9.7	11.9	13.3	10.9	19.0	19.2	21.8	23.3	25.1	24.3	28.5	22.8	24.0	24.1	20.1

Source: Computed from Table 3

Table 4 shows percentage performance in the enrolment of female undergraduate students from 7.6% in the Academic Year 1994 to 24.1% in the academic year 2008/09. The Faculty of Education seems to perform well with an average of over 32%.

Table 5: Student Admission by Regional/Country/Coordination Centre, Gender and Academic Year

Year	1994			1995			1996			1997			1998		
	M	F	T	M	F	T	M	F	T	M	F	T	M	F	T
Arusha	38	4	42	32	3	35	69	3	72	41	3	44	49	5	54
D'Salaam	249	42	291	301	43	344	384	80	464	366	69	435	296	77	373
Dodoma	15	1	16	8	2	10	30	5	35	24	4	28	35	10	45
Ilala	0	0	0	0	0	0	0	0	0	0	0	0	0	0	0
Iringa	34	1	35	27	1	28	61	4	65	44	2	46	35	4	39
Kagera	14	0	14	15	0	15	43	2	45	16	3	19	20	1	21
Kigoma	6	0	6	14	1	15	24	1	25	13	3	16	32	3	35
Kilimanjaro	41	1	42	19	2	21	73	5	78	29	5	34	28	7	35
Kinondoni	0	0	0	0	0	0	0	0	0	0	0	0	0	0	0
Lindi	6	0	6	7	0	7	9	0	9	11	0	11	9	1	10

Table 5: Cont...

Year	1994			1995			1996			1997			1998		
Region / Country	M	F	T	M	F	T	M	F	T	M	F	T	M	F	T
Manyara	0	0	0	0	0	0	0	0	0	0	0	0	0	0	0
Mara	21	0	21	14	1	15	37	0	37	21	1	22	14	4	18
Mbeya	65	1	66	52	2	54	70	2	72	54	8	62	52	7	59
Morogoro	20	7	27	25	5	30	51	5	56	45	9	54	29	5	34
Mtwara	17	0	17	13	0	13	16	7	23	21	4	25	10	3	13
Mwanza	37	2	39	36	1	37	73	4	77	31	2	33	57	14	71
Coast	14	0	14	14	3	17	24	2	26	22	3	25	20	1	21
Rukwa	22	0	22	3	0	3	15	2	17	4	0	4	3	0	3
Ruvuma	14	1	15	16	0	16	18	4	22	19	1	20	30	0	30
Shinyanga	18	0	18	16	0	16	40	1	41	19	1	20	38	3	41
Singida	5	1	6	7	0	7	15	1	16	10	2	12	10	1	11
Tabora	34	2	36	12	0	12	40	2	42	21	1	22	25	4	29
Tanga	11	2	13	8	0	8	51	4	55	17	2	19	22	5	27
Temeke	0	0	0	0	0	0	0	0	0	0	0	0	0	0	0
Zanzibar	18	2	20	28	4	32	40	2	42	16	4	20	13	3	16
Lesotho	0	0	0	0	0	0	0	0	0	2	0	2	0	0	0
Kenya	0	0	0	0	0	0	9	0	9	2	0	2	7	1	8
Uganda	0	0	0	0	0	0	0	0	0	0	0	0	2	0	2
Malawi	0	0	0	0	0	0	0	0	0	0	0	0	0	0	0
Zambia	0	0	0	1	2	3	0	0	0	0	0	0	0	0	0
Ethiopia	0	0	0	0	0	0	0	0	0	0	0	0	0	0	0
Rwanda	0	0	0	0	0	0	0	0	0	0	0	0	0	0	0
U.S.A.	0	0	0	0	0	0	0	0	0	0	0	0	1	0	1
Burundi	0	0	0	0	0	0	0	0	0	3	0	3	2	0	2
India	0	0	0	0	0	0	0	0	0	0	0	0	0	0	0
Sudan	0	0	0	0	0	0	0	0	0	0	0	0	0	0	0
Hungary	0	0	0	0	0	0	1	0	1	0	0	0	0	0	0
Hong Kong	0	0	0	0	0	0	0	0	0	0	0	0	0	0	0
United Kingdom	0	0	0	0	0	0	0	0	0	0	0	0	0	0	0

Table 5: Cont...

Year	1994			1995			1996			1997			1998		
Region /Country	M	F	T	M	F	T	M	F	T	M	F	T	M	F	T
Namibia	0	0	0	0	0	0	0	0	0	0	0	0	0	0	0
Nigeria	0	0	0	0	0	0	0	0	0	0	0	0	0	0	0
Pemba	0	0	0	0	0	0	0	0	0	0	0	0	0	0	0
South Africa	0	0	0	0	0	0	0	0	0	0	0	0	0	0	0
Total	699	67	766	668	70	738	1193	136	1329	851	127	978	839	159	998

Source: Statistics Section

Table 5: Cont...

Year	1999			2000			2001			2002			2003			2004		
Region/ Country	M	F	T	M	F	T	M	F	T	M	F	T	M	F	T	M	F	T
Arusha	51	8	59	48	7	55	87	25	112	115	31	146	106	32	138	118	36	154
D'Salaam	216	48	264	274	98	372	402	137	539	328	176	504	454	260	714	571	331	902
Dodoma	23	4	27	23	3	26	79	12	91	56	17	73	46	16	62	74	21	95
Ila	0	0	0	0	0	0	0	0	0	0	0	0	0	0	0	0	0	0
Iringa	43	5	48	48	8	56	94	21	115	58	20	78	86	37	123	100	47	147
Kagera	29	10	39	24	3	27	20	3	23	45	8	53	46	7	53	79	13	92
Kigoma	12	0	12	25	1	26	42	3	45	43	3	46	53	10	63	46	7	53
Kilimanjaro	39	13	52	35	5	40	66	14	80	49	24	73	88	36	124	102	58	160
KInondoni	0	0	0	0	0	0	0	0	0	0	0	0	0	0	0	0	0	0
Lindi	4	0	4	14	0	14	32	6	38	24	6	30	28	5	33	30	8	38
Manyara	0	0	0	0	0	0	0	0	0	0	0	0	19	5	24	32	7	39
Mara	29	2	31	21	1	22	71	20	91	69	11	80	59	8	67	77	18	95
Mbeya	42	6	48	51	4	55	95	16	111	79	16	95	116	33	149	109	39	148
Morogoro	23	3	26	27	3	30	61	11	72	62	22	84	75	26	101	80	27	107
Mtwara	18	0	18	22	10	32	52	8	60	16	6	22	25	7	32	21	8	29
Mwanza	55	4	59	44	9	53	97	12	109	113	23	136	117	30	147	130	27	157
Coast	8	3	11	13	6	19	40	12	52	17	5	22	30	11	41	42	21	63
Rukwa	8	0	8	10	2	12	18	2	20	32	5	37	39	4	43	46	4	50
Ruvuma	18	4	22	17	6	23	24	7	31	40	9	49	59	13	72	35	13	48
Shinyanga	25	2	27	47	16	63	95	17	112	41	6	47	53	10	63	90	13	103
Singida	6	1	7	6	0	6	51	11	62	40	12	52	38	13	51	56	20	76
Tabora	42	3	45	33	8	41	73	12	85	55	10	65	42	6	48	46	13	59
Tanga	23	5	28	19	2	21	54	25	79	93	31	124	98	36	134	82	29	111
Temeke	0	0	0	0	0	0	0	0	0	0	0	0	0	0	0	0	0	0
Zanzibar	33	2	35	37	14	51	64	16	80	57	10	67	40	15	55	41	10	51
Lesotho	0	0	0	1	0	1	0	0	0	0	0	0	0	1	1	0	0	0
Kenya	5	1	6	2	0	2	1	0	1	41	17	58	0	0	0	33	15	48
Uganda	2	0	2	0	0	0	1	1	2	0	0	0	44	16	60	14	8	22
Malawi	1	0	1	0	0	0	0	0	0	0	0	0	0	0	0	1	0	1

Table 5: Cont...

Year	1999			2000			2001			2002			2003			2004			
Region/Country	M	F	T	M	F	T	M	F	T	M	F	T	M	F	T	M	F	T	
Zambia	0	0	0	0	0	0	0	0	0	0	0	0	0	1	1	1	1	0	1
Ethiopia	0	0	0	1	0	1	0	0	0	0	0	0	1	1	2	0	0	0	
Rwanda	0	0	0	0	0	0	0	0	0	0	0	0	1	0	1	0	0	0	
U.S.A.	0	0	0	0	0	0	0	0	0	0	0	0	1	0	1	0	0	0	
Burundi	0	0	0	0	0	0	1	0	1	1	0	1	0	0	0	0	0	0	
India	0	0	0	0	0	0	0	1	1	0	0	0	0	0	0	0	0	0	
Sudan	0	0	0	0	0	0	1	0	1	0	0	0	0	0	0	0	0	0	
Hungary	0	0	0	0	0	0	0	1	1	0	0	0	0	0	0	0	0	0	
Hong Kong	1	0	1	0	0	0	0	0	0	0	0	0	0	0	0	0	0	0	
United Kingdom	0	0	0	1	0	1	0	0	0	0	0	0	0	0	0	0	0	0	
Namibia	0	0	0	0	0	0	0	0	0	0	0	0	0	0	0	0	0	0	
Nigeria	0	0	0	0	0	0	0	0	0	0	0	0	0	0	0	0	0	0	
Pemba	0	0	0	0	0	0	0	0	0	0	0	0	0	0	0	0	0	0	
South Africa	0	0	0	0	0	0	0	0	0	0	0	0	0	0	0	0	0	0	
Total	756	124	880	843	206	1049	1621	393	2014	1474	468	1942	1764	640	2404	2056	793	2849	

Table 5 Cont...

Year	2005			2006			2007			2007/08			2008/09			Grand Total		
Region /Country	M	F	T	M	F	T	M	F	T	M	F	T	M	F	T	M	F	T
Arusha	172	60	232	181	85	266	372	150	522	167	83	250	224	119	343	1870	654	2524
D'Salaam	772	494	1266	962	730	1692	1182	684	1866	577	390	967	0	0	0	7334	3659	10993
Dodoma	69	18	87	119	53	172	206	86	292	86	28	114	67	27	94	960	307	1267
Ilala	0	0	0	0	0	0	0	0	0	0	0	0	467	312	779	469	313	782
Iringa	152	43	195	161	41	202	270	77	347	142	44	186	168	66	234	1523	421	1944
Kagera	109	16	125	111	22	133	165	30	195	69	9	78	142	27	169	947	154	1101
Kigoma	57	10	67	62	12	74	141	15	156	53	15	68	68	27	95	691	111	802
Kilimanjaro	136	85	221	163	116	279	381	223	604	167	99	266	149	85	234	1565	778	2343
Kinondoni	0	0	0	0	0	0	0	0	0	0	0	0	496	316	812	496	316	812
Lindi	29	13	42	24	11	35	65	14	79	49	9	58	43	20	63	384	93	477
Manyara	76	16	92	59	25	84	187	63	250	40	17	57	131	53	184	544	186	730
Mara	71	11	82	91	16	107	129	39	168	49	4	53	105	28	133	878	164	1042
Mbeya	126	35	161	192	72	264	328	102	430	96	38	134	200	50	250	1727	431	2158
Morogoro	123	41	164	119	52	171	222	129	351	130	54	184	185	97	282	1277	496	1773
Mtwara	61	13	74	70	26	96	132	25	157	46	11	57	127	43	170	667	171	838
Mwanza	148	42	190	159	56	215	234	47	281	113	47	160	156	59	215	1600	396	1979
Coast	56	28	84	63	32	95	115	53	168	60	28	88	101	52	153	639	260	899

Table 5 Cont...

Year	2005			2006			2007			2007/08			2008/09			Grand Total		
Region / Country	M	F	T	M	F	T	M	F	T	M	F	T	M	F	T	M	F	T
Rukwa	75	14	89	79	13	92	131	34	165	61	7	68	76	13	89	622	100	722
Ruvuma	80	20	100	85	42	127	155	47	202	73	19	92	77	22	99	760	208	968
Shinyanga	125	20	145	72	6	78	129	25	154	47	10	57	170	47	217	1025	177	1202
Singida	58	17	75	62	27	89	74	30	104	90	33	123	41	22	63	569	191	760
Tabora	70	8	78	75	18	93	136	20	156	61	11	72	85	12	97	850	130	980
Tanga	124	43	167	131	63	194	225	78	303	91	36	127	112	39	151	1161	400	1561
Temeke	0	0	0	0	0	0	0	0	0	0	0	0	121	74	195	121	74	195
Zanzibar	48	7	55	61	19	80	79	18	97	49	25	74	93	33	126	717	184	901
Lesotho	1	0	1	0	0	0	0	0	0	0	0	0	0	0	0	4	1	5
Kenya	0	0	0	0	0	0	1	0	1	3	1	4	5	1	6	109	36	145
Uganda	0	2	2	0	0	0	1	0	1	0	0	0	0	0	0	64	27	91
Malawi	0	0	0	0	0	0	0	0	0	0	0	0	0	0	0	2	0	2
Zambia	0	0	0	0	0	0	0	0	0	0	0	0	0	0	0	2	3	5
Ethiopia	0	0	0	0	0	0	0	0	0	0	0	0	0	0	0	2	1	3
Rwanda	0	0	0	0	0	0	0	0	0	0	0	0	0	0	0	1	0	1
OU.S.A.	0	0	0	0	0	0	0	0	0	0	0	0	0	0	0	2	0	2
Burundi	2	0	2	0	0	0	0	0	0	0	0	0	0	0	0	9	0	9
India	0	0	0	0	0	0	0	0	0	0	0	0	0	0	0	0	1	1
Sudan	0	0	0	0	0	0	0	0	0	0	0	0	0	0	0	1	0	1
Hungary	0	0	0	0	0	0	0	0	0	0	0	0	0	0	0	1	1	2
Hong Kong	0	0	0	0	0	0	0	0	0	0	0	0	0	0	0	1	0	1
United Kingdom	0	0	0	0	0	0	0	0	0	0	0	0	0	0	0	1	0	1
Namibia	0	0	0	0	0	0	0	0	0	0	0	0	0	0	0	0	0	0
Nigeria	1	0	1	0	0	0	0	0	0	0	0	0	0	0	0	1	0	1
Pemba	0	0	0	21	3	24	27	1	28	3	4	7	48	14	62	99	22	121
South Africa	1	0	1	0	0	0	0	0	0	0	0	0	0	0	0	1	0	1
Total	2742	1056	3798	3122	1540	4662	5087	1990	7077	2322	1022	3344	3659	1659	5318	29696	10450	40146

Table 5 portrays student (undergraduate Degree and non degree programmes) admission by Regional and coordinating Centres. The then Dar es Salaam Regional Centre still appears to perform better than other regional centres with cumulative admission exceeding 10,000 students. (Dar es Salaam Regional Centre has now been splitted into three regional centres namely, Ilala, Kinondoni and Temeke).

Table 6: Percentage of Admission for Female Students by Regional/Coordination Centres and Year

Year	1994	1995	1996	1997	1998	1999	2000	2001	2002	2003	2004	2005	2006	2007	2007/08	2008/09
Region/Coord. Centre	%F	%F	%F	%F	%F	%F	%F	%F	%F	%F	%F	%F	%F	%F	%F	%F
Arusha	9.5	8.6	4.2	6.8	9.3	13.6	12.7	22.3	21.2	23.2	23.4	25.9	27.2	28.7	33.2	34.8
D'Salaam	14.4	12.5	17.2	15.9	20.6	18.2	26.3	25.4	34.9	36.4	36.7	39.0	38.3	38.7	40.3	0.0
Dodoma	6.3	20	14.3	14.3	22.2	14.8	11.5	13.2	23.3	25.8	22.1	20.7	30.5	29.5	24.6	28.3
Ilala	0.0	0.0	0.0	0.0	0.0	0.0	0.0	0.0	0.0	0.0	0.0	0.0	0.0	0.0	0.0	40.1
Iringa	2.9	3.6	6.2	4.3	10.3	10.4	14.3	18.3	25.6	30.1	32.0	22.1	19.9	22.2	23.7	26.5
Kagera	0.0	0.0	4.4	15.8	4.8	25.6	11.1	13.0	15.1	13.2	14.1	12.8	15.5	15.4	11.5	16.1
Kigoma	0.0	6.7	4.0	18.8	8.6	0.0	3.8	6.7	6.5	15.9	13.2	14.9	18.6	9.6	22.1	24.5
Kilimanjaro	2.4	9.5	6.4	14.7	20.0	25.0	12.5	17.5	32.9	29.0	36.3	38.5	38.6	36.6	37.2	36.3
Kinondoni	0.0	0.0	0.0	0.0	0.0	0.0	0.0	0.0	0.0	0.0	0.0	0.0	0.0	0.0	0.0	38.3
Lindi	0.0	0.0	0.0	0.0	10.0	0.0	0.0	15.8	20.0	15.2	21.1	31.0	31.6	17.7	15.5	25.5
Manyara	0.0	0.0	0.0	0.0	0.0	0.0	0.0	0.0	0.0	20.8	17.9	17.4	15.8	25.2	29.8	19.8
Mara	0.0	6.7	0.0	4.5	22.2	6.5	4.5	22.0	13.8	11.9	18.9	13.4	11.0	23.2	7.5	15.4
Mbeya	1.5	3.7	2.8	12.9	11.9	12.5	7.3	14.4	16.8	22.1	26.4	21.7	23.9	23.7	28.4	20.1
Morogoro	25.9	16.7	8.9	16.7	14.7	11.5	10.0	15.5	26.2	25.7	25.2	25.0	28.5	36.8	29.3	25.8
Mtwara	0.0	0.0	30.4	16.0	23.1	0.0	31.3	13.3	27.3	21.9	27.6	17.6	26.3	15.9	19.3	22.6
Mwanza	5.1	2.7	5.2	6.1	19.7	6.8	17.0	11.0	16.9	20.4	17.2	22.1	16.6	16.7	29.4	27.5
Coast	0.0	17.6	7.7	12.0	4.8	27.3	31.6	23.1	22.7	26.8	33.3	33.3	26.2	31.5	31.8	34.7
Rukwa	0.0	0.0	11.8	0.0	0.0	0.0	16.7	10.0	13.5	9.3	8.0	15.7	17.3	20.6	10.3	13.6
Ruvuma	6.7	0.0	18.2	5.0	0.0	18.2	26.1	22.6	18.4	18.1	27.1	20.0	26.7	23.3	20.7	22.4
Shinyanga	0	0.0	2.4	5.0	7.3	7.4	25.4	15.2	12.8	15.9	12.6	13.8	6.9	16.2	17.6	14.7
Singida	16.7	0.0	6.3	16.7	9.1	14.3	0.0	17.7	23.1	25.5	26.3	22.7	26.2	28.8	26.8	33.3
Tabora	5.6	0.0	4.8	4.5	13.8	6.7	19.5	14.1	15.4	12.5	22.0	10.3	20.6	12.8	15.3	12.4
Tanga	15.4	0.0	7.3	10.5	18.5	17.9	9.5	31.6	25.0	26.9	26.1	25.7	33.1	25.7	28.3	25.8
Temeke	0.0	0.0	0.0	0.0	0.0	0.0	0.0	0.0	0.0	0.0	0.0	0.0	0.0	0.0	0.0	35.8

Table 6: Cont...

Year	1994	1995	1996	1997	1998	1999	2000	2001	2002	2003	2004	2005	2006	2007	2007/08	2008/09
Region/Coord. Centre	%F	%F	%F	%F	%F	%F	%F	%F	%F	%F	%F	%F	%F	%F	%F	%F
Zanzibar	10	12.5	4.8	20.0	18.8	5.7	27.5	20.0	14.9	27.3	19.6	12.7	19.3	18.6	33.8	26.4
Lesotho	0.0	0.0	0.0	0.0	0.0	0.0	0.0	0.0	0.0	100.0	0.0	0.0	0.0	0.0	0.0	0.0
Kenya	0.0	0.0	0.0	0.0	12.5	16.7	0.0	0.0	0.0	0.0	31.3	0.0	0.0	0.0	25.0	20.0
Uganda	0.0	0.0	0.0	0.0	0.0	0.0	0.0	50.0	0.0	26.7	36.4	100.0	0.0	0.0	0.0	0.0
Malawi	0.0	0.0	0.0	0.0	0.0	0.0	0.0	0.0	0.0	0.0	0.0	0.0	0.0	0.0	0.0	0.0
Zambia	0.0	66.7	0.0	0.0	0.0	0.0	0.0	0.0	0.0	100.0	0.0	0.0	0.0	0.0	0.0	0.0
Ethiopia	0.0	0.0	0.0	0.0	0.0	0.0	0.0	0.0	0.0	50.0	0.0	0.0	0.0	0.0	0.0	0.0
Rwanda	0.0	0.0	0.0	0.0	0.0	0.0	0.0	0.0	0.0	0.0	0.0	0.0	0.0	0.0	0.0	0.0
U.S.A.	0.0	0.0	0.0	0.0	0.0	0.0	0.0	0.0	0.0	0.0	0.0	0.0	0.0	0.0	0.0	0.0
Burundi	0.0	0.0	0.0	0.0	0.0	0.0	0.0	0.0	0.0	0.0	0.0	0.0	0.0	0.0	0.0	0.0
India	0.0	0.0	0.0	0.0	0.0	0.0	0.0	100.0	0.0	0.0	0.0	0.0	0.0	0.0	0.0	0.0
Sudan	0.0	0.0	0.0	0.0	0.0	0.0	0.0	0.0	0.0	0.0	0.0	0.0	0.0	0.0	0.0	0.0
Hungary	0.0	0.0	0.0	0.0	0.0	0.0	0.0	100.0	0.0	0.0	0.0	0.0	0.0	0.0	0.0	0.0
Hong Kong	0.0	0.0	0.0	0.0	0.0	0.0	0.0	0.0	0.0	0.0	0.0	0.0	0.0	0.0	0.0	0.0
United Kingdom	0.0	0.0	0.0	0.0	0.0	0.0	0.0	0.0	0.0	0.0	0.0	0.0	0.0	0.0	0.0	0.0
Namibia	0.0	0.0	0.0	0.0	0.0	0.0	0.0	0.0	0.0	0.0	0.0	0.0	0.0	0.0	0.0	0.0
Nigeria	0.0	0.0	0.0	0.0	0.0	0.0	0.0	0.0	0.0	0.0	0.0	0.0	0.0	3.6	0.0	0.0
Pemba	0.0	0.0	0.0	0.0	0.0	0.0	0.0	0.0	0.0	0.0	0.0	0.0	0.0	0.0	57.1	21.3
South Africa	0.0	0.0	0.0	0.0	0.0	0.0	0.0	0.0	0.0	0.0	0.0	0.0	0.0	0.0	0.0	0.0
Average	9.4	14.4	8.8	11.6	14.1	11.2	16.8	25.5	20.3	28.9	24.0	25.1	23.6	23.7	25.8	25.5

Source: Computed from Table 5

Table 7: Admission of Postgraduate Students by Programme, Gender and Academic Year

Academic Year		2001			2002			2003			2004			2005		
Programme	Gender	M	F	T	M	F	T	M	F	T	M	F	T	M	F	T
PGDE		17	2	19	23	5	28	37	7	44	40	5	45	42	12	54
M.Dist. Ed.		3	2	5	9	5	14	29	1	30	29	6	35	28	10	38
M.Ed		18	4	22	7	2	9	4	1	5	0	0	0	1	0	1
MA		1	0	1	23	0	23	4	0	4	5	0	5	0	0	0
MBA		0	0	0	12	0	12	10	2	12	198	38	236	240	29	269
MSc		2	1	3	2	1	3	0	2	2	2	1	3	2	1	3
PGDL		14	1	15	7	1	8	12	0	12	15	0	15	23	0	23
LLM		8	0	8	1	0	1	1	2	3	2	0	2	2	1	3
Ph.D		21	3	24	22	3	25	11	1	12	9	3	12	2	0	2
Grand Total		84	13	97	106	17	123	108	16	124	300	53	353	340	53	393

Table 7 Cont...

Academic Year		2006			2007			2008			2008/09			Total		
Programme	Gender	M	F	T	M	F	T	M	F	T	M	F	T	M	F	T
PGDE		61	5	66	34	18	52	43	11	54	37	10	47	334	75	409
M.Dist. Ed.		0	0	0	78	51	129	16	4	20	10	4	14	202	83	285
M.Ed		39	13	52	40	10	50	88	52	140	55	35	90	252	117	369
MA		1	0	1	20	10	30	0	0	0	79	24	103	133	34	167
MBA		319	34	353	684	173	857	277	56	333	392	101	493	2132	433	2565
MSc		0	1	1	0	1	1	2	0	2	0	0	0	10	8	18
PGDL		30	4	34	51	9	60	36	5	41	15	5	20	203	25	228
LLM		3	1	4	2	1	3	3	1	4	0	0	0	22	6	28
Ph.D		3	0	3	2	0	2	11	4	15	0	0	0	81	14	95
Grand Total		456	58	514	911	273	1184	476	133	609	588	179	767	3369	795	4164

Source: Statistics Section

Table 7 shows how admission of postgraduate students in various programmes has been increasing yearly, from 97 students in the Academic Year 2001 when admission of postgraduate students was introduced for the first time, to 767 students in 2008/09.

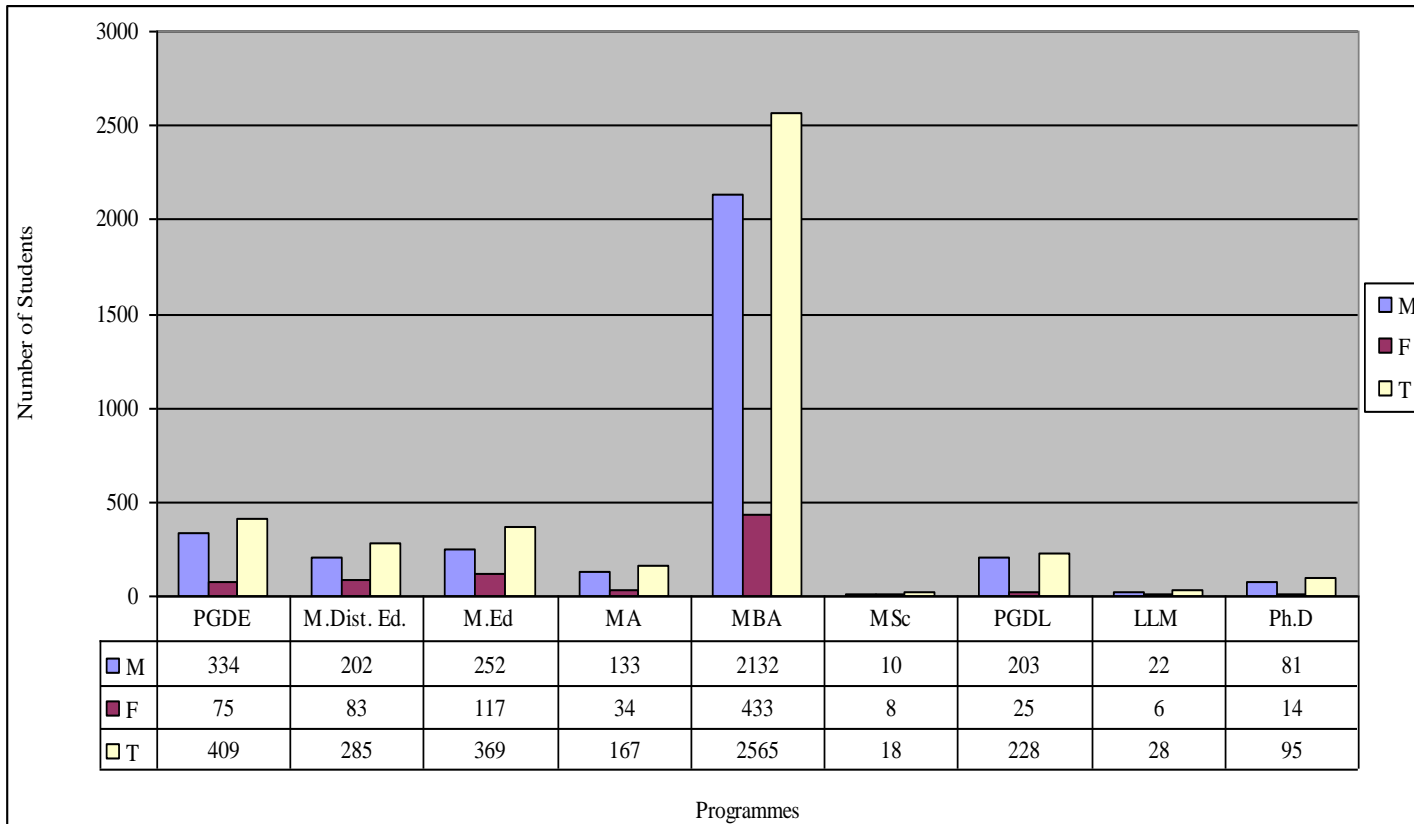


Fig. 3(a) Postgraduate Students Cumulative Admissions by Programme and Gender from 2001 - 2008/09

Fig. 3(a) Portrays Postgraduate students cumulative admission in various programmes with highest admission being in the MBA because it is a popular programme

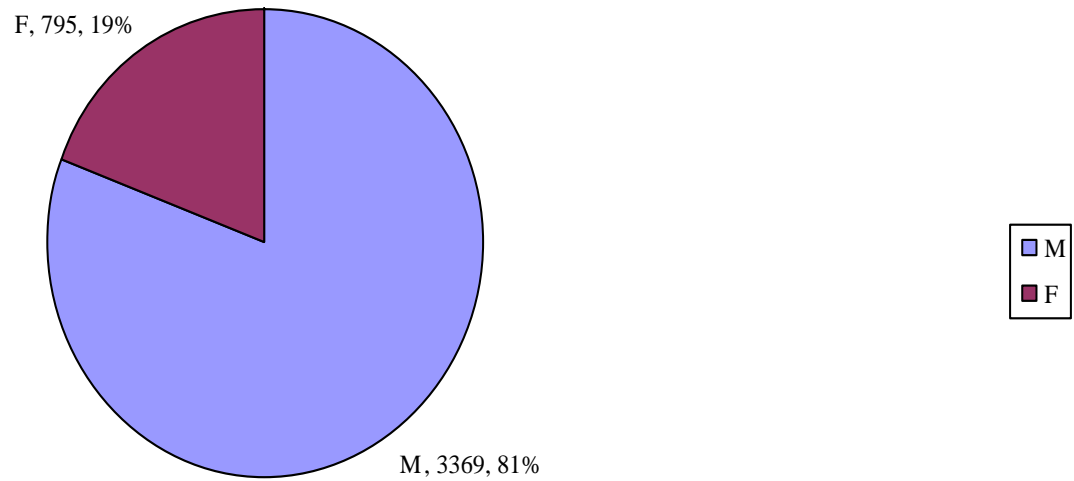
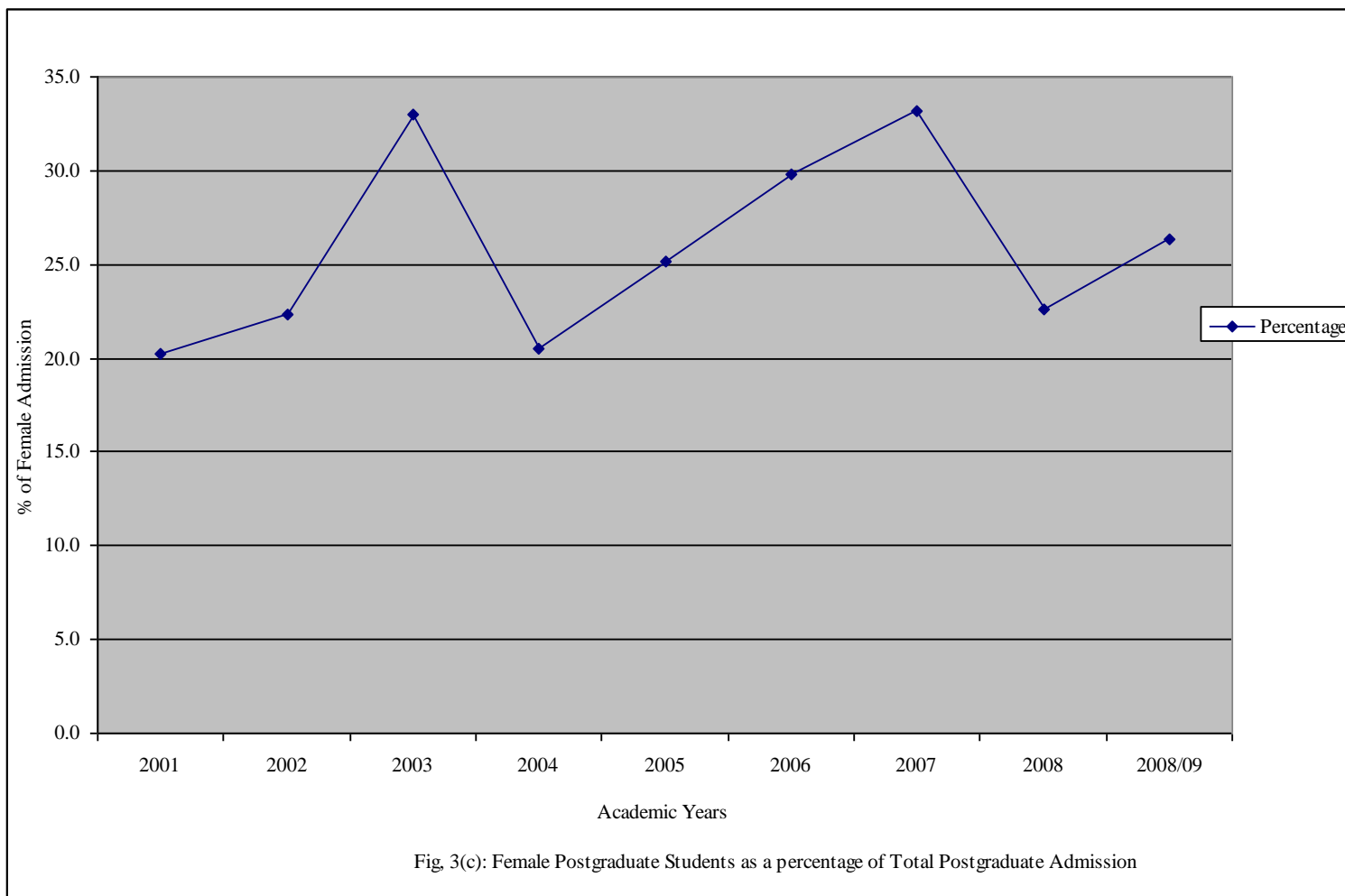


Fig.3 (b) Postgraduate Students Cumulative Admission by Gender from 2001 - 2008/09

Table 8: Female Postgraduate Students as Percentage of Total Admission by Programme and Academic Year

Academic Year	2001	2002	2003	2004	2005	2006	2007	2008	2008/09
Programme	%F	%F	%F	%F	%F	%F	%F	%F	%F
PGDE	10.5	17.9	15.9	11.1	22.2	7.6	34.6	20.4	21.3
M.Dist. Ed.	40.0	35.7	3.3	17.1	26.3	0.0	39.5	20.0	28.6
M.Ed	18.2	22.2	20.0	0.0	0.0	25.0	20.0	37.1	38.9
MA	0.0	0.0	0.0	0.0	0.0	0.0	3.3	0.0	23.3
MBA	0.0	0.0	16.7	16.1	10.8	9.6	20.2	16.8	20.5
MSc	33.3	33.3	100.0	33.3	33.3	100.0	100.0	0.0	0.0
PGDL	6.7	12.5	0.0	0.0	0.0	11.8	15.0	12.2	25.0
LLM	0.0	0.0	66.7	0.0	33.3	25.0	33.3	25.0	0.0
Ph.D	12.5	12.0	8.3	25.0	0.0	0.0	0.0	26.7	0.0
Average	20.2	22.3	33.0	20.5	25.2	29.8	33.2	22.6	26.3



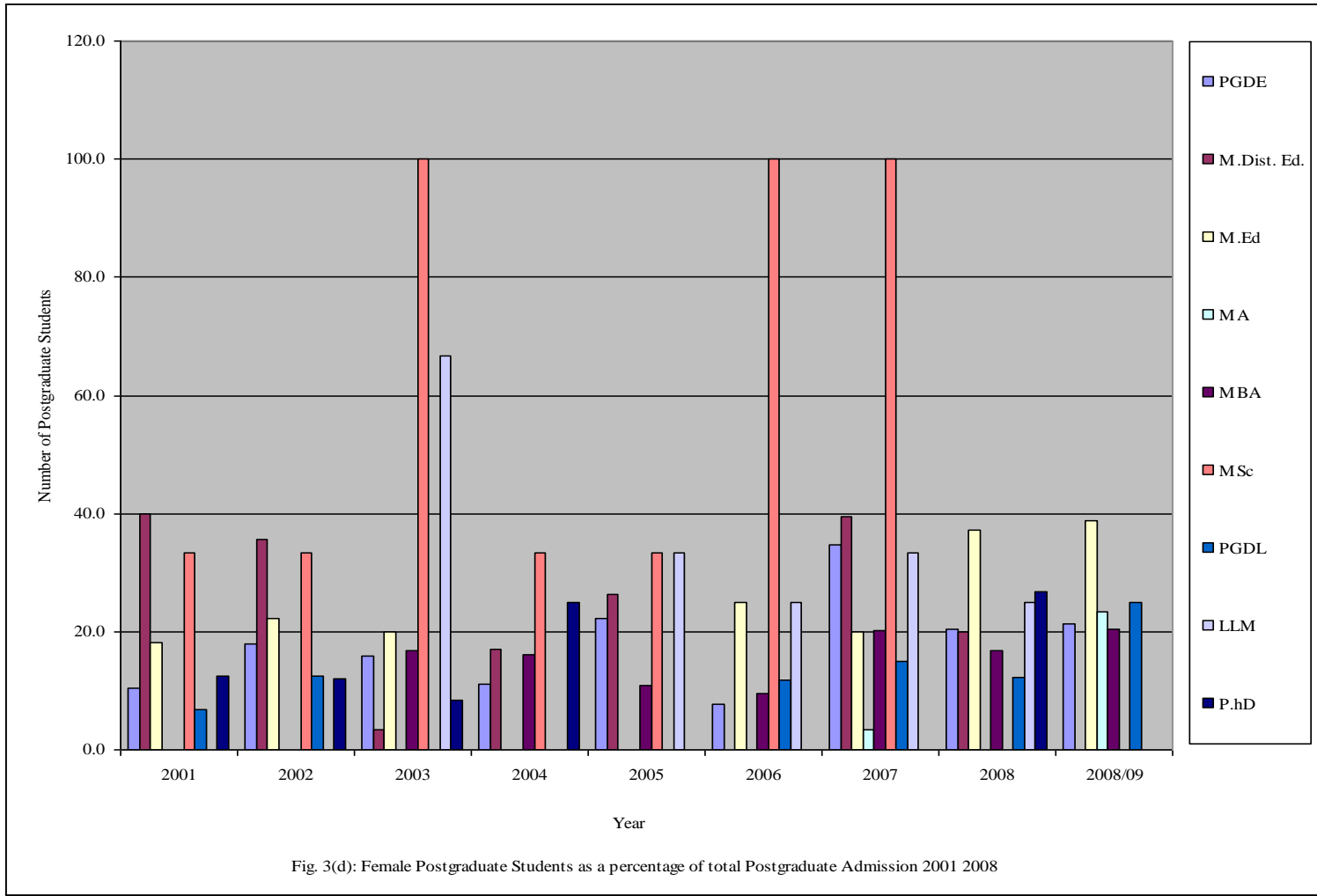


Table 9: Student Admission in Non-Degree Programmes by Gender and Academic Year

Year		1996			1997			1998			1999			2000			2001		
Programme	Gender	M	F	T	M	F	T	M	F	T	M	F	T	M	F	T	M	F	T
OFC		194	34	228	182	41	223	191	60	251	204	57	261	217	59	276	360	122	482
CYP - Diploma														45	13	58	82	28	110
CCDE														30	10	40	8	1	9
ODDEOL																			
PTE - Diploma																			
CPPH																			
Total		194	34	228	182	41	223	191	60	251	204	57	261	292	82	374	450	151	601

Table 9: Cont...

Year		2002			2003			2004			2005			2006			2007		
Programme	Gender	M	F	T	M	F	T	M	F	T	M	F	T	M	F	T	M	F	T
OFC		353	141	494	476	213	689	562	260	822	690	359	1049	651	490	1141	833	537	1370
CYP - Diploma		78	26	104	86	29	115	68	28	96	41	12	53	23	10	33	22	7	29
CCDE		3	1	4	25	8	33	2	1	3	2	0	2	1	3	4	0	0	0
ODDEOL														15	2	17	5	5	10
PTE - Diploma																			
CPPH																	1	0	1
Total		434	168	602	587	250	837	632	289	921	733	371	1104	690	505	1195	861	549	1410

Table 9: Cont...

Year		2007/08			2008/09			Grand Total		
Programme	Gender	M	F	T	M	F	T	M	F	T
OFC		463	287	750	750	520	1270	6126	3180	9306
CYP –Diploma		11	5	16	22	10	32	478	168	646
CCDE		1	2	3	0	0	0	72	26	98
ODDEOL		8	4	12	17	5	22	45	16	61
PTE - Diploma					304	184	488	304	184	488
CPPH		0	0	0	0	0	0	1	0	1
Total		483	298	781	1093	719	1812	7026	3574	10600

Table 9 shows the trend of students admission in various Non-Degree programmes.

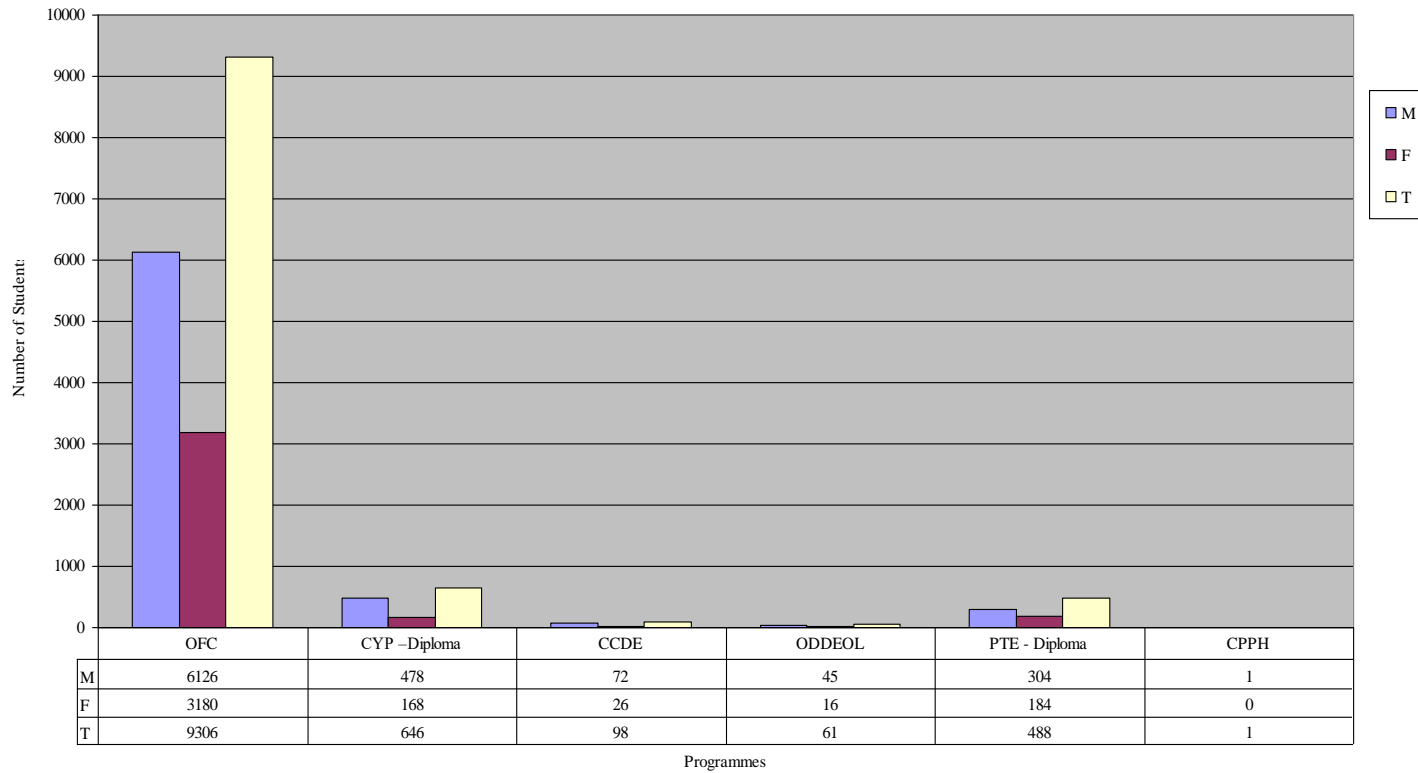


Fig. 4(a): Cumulative Students Admission in Non-Degree Programmes by Gender and Academic Year

Figure 4 (a) Portrays Cumulative Students Admission in Non-Degree Programmes, with the Highest Admission in the OFC Programme and Lowest in CPPH Programme

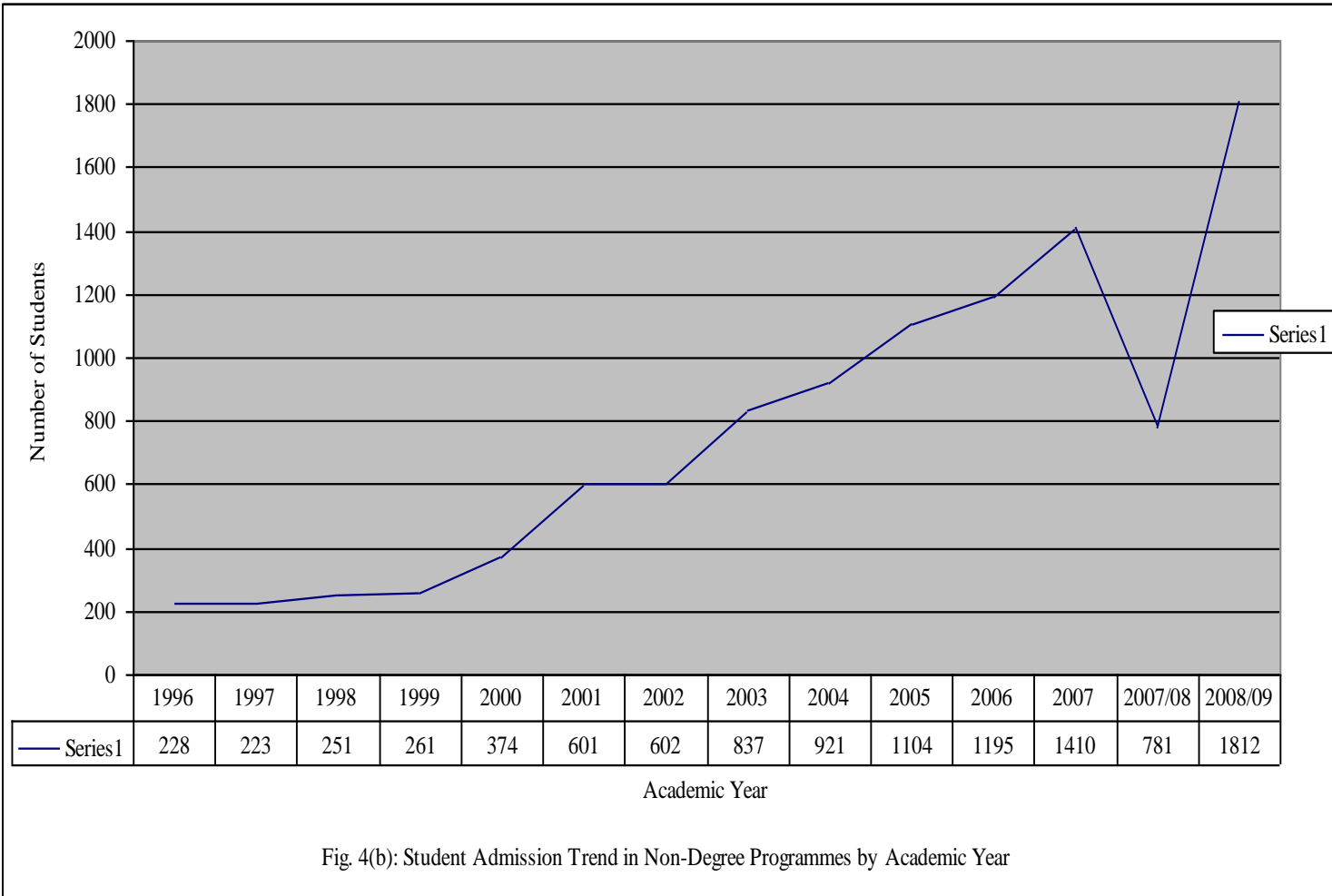


Fig. 4(b): Student Admission Trend in Non-Degree Programmes by Academic Year

Table 10: Female Students as a Percentage of Total Admission by Programme and Academic Year in Non - Degree Programmes

Academic Year	1996	1997	1998	1999	2000	2001	2002	2003	2004	2005	2006	2007	2007/08	2008/09
Programme	%F	%F	%F	%F	%F	%F	%F	%F	%F	%F	%F	%F	%F	%F
OFC	14.9	18.4	23.9	21.8	21.4	25.3	28.5	30.9	31.6	34.2	42.8	39.2	38.3	40.9
CYP - Diploma					22.4	25.5	25.0	25.2	29.2	22.6	31.3	21.4	31.3	31.3
CCDE					25.0	11.1	25.0	24.2	33.3	0.0	75.0	0.0	66.7	0.0
ODDEOL											13.6	50.0	33.3	22.7
PTE - Diploma														37.7
CPPH												0.0	0.0	0.0
Average	14.9	18.4	23.9	21.8	22.9	20.6	26.2	26.8	31.4	28.4	40.7	36.9	42.4	33.2

Source: Computed from Table 9

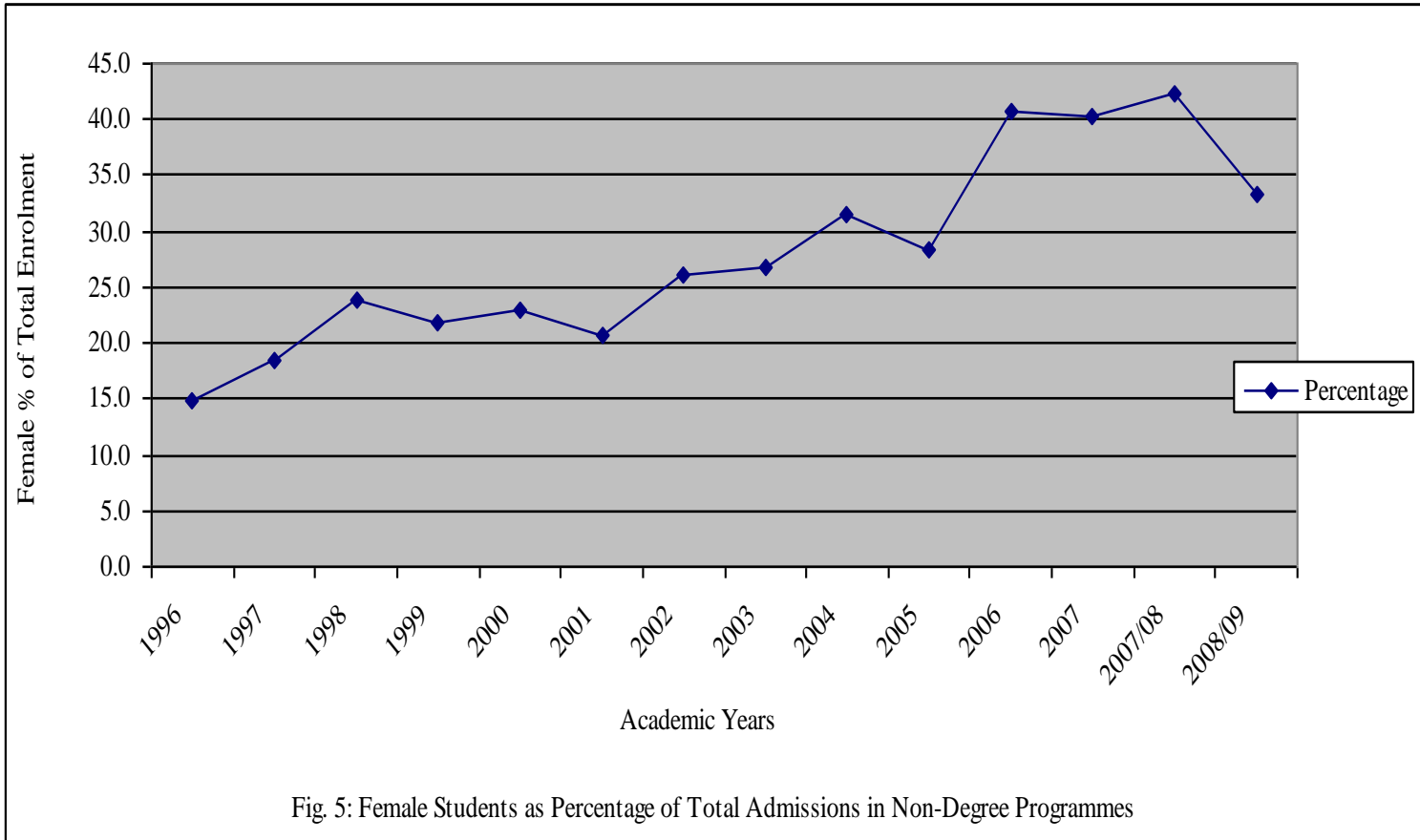


Table 10 and Figure 5 portray percentage performance of female student admission in Non-Degree programmes. In general the Non-Degree programmes have performed well in terms of admission of female students as compared with other programmes

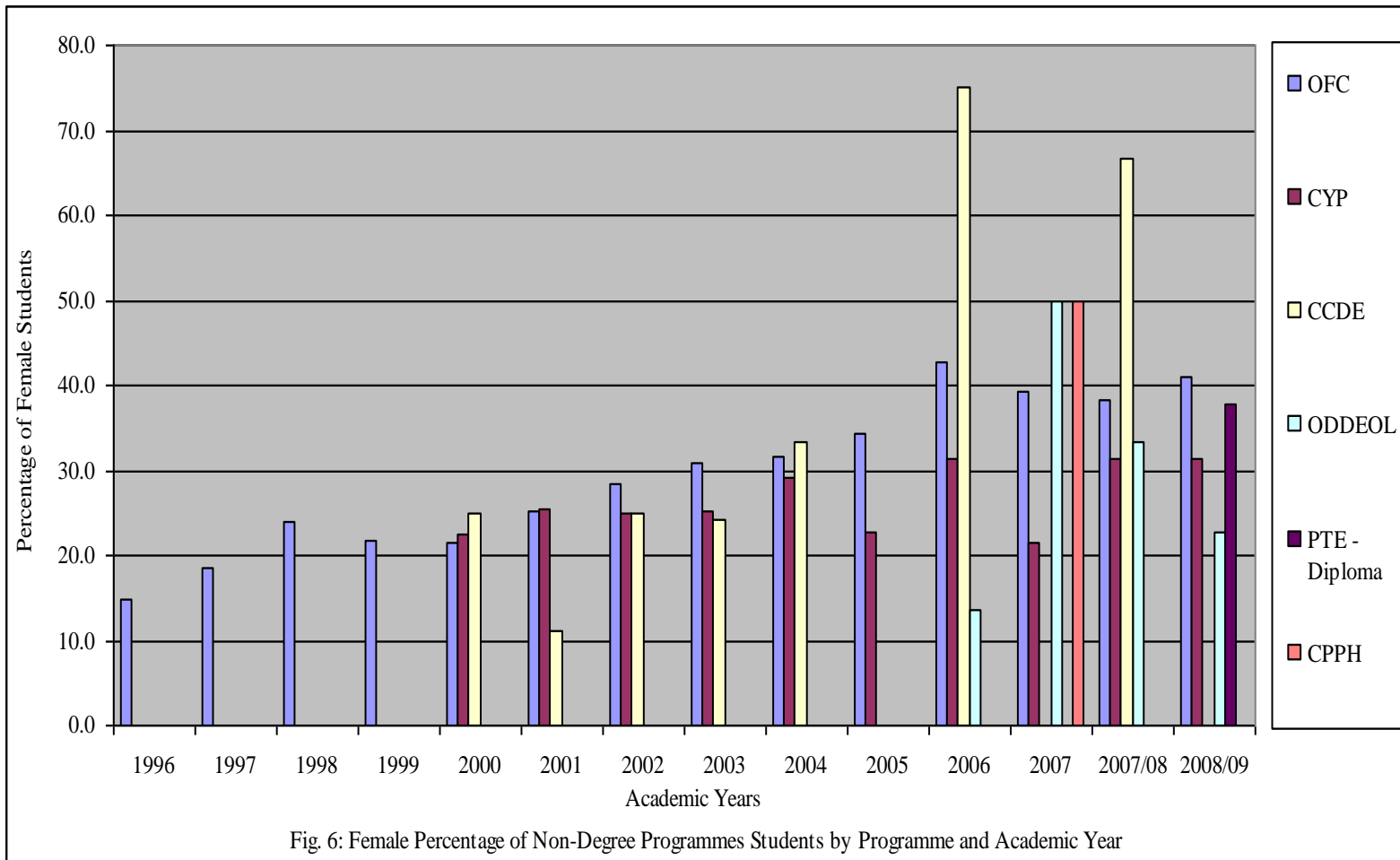


Fig. 6: Female Percentage of Non-Degree Programmes Students by Programme and Academic Year

Table 11 Number of Undergraduate Degree Programmes offered

Year	Faculties					Total
	FED	FASS	FSTES	FLW	FBM	
1994	0	2	0	0	2	4
1995	0	2	2	1	2	7
1996	0	2	2	1	2	7
1997	0	2	2	1	2	7
1998	0	2	2	1	2	7
1999	0	2	2	1	2	7
2000	0	2	2	1	2	7
2001	1	2	2	1	2	8
2002	1	2	2	1	2	8
2003	1	2	2	1	4	10
2004	1	2	2	1	4	10
2005	2	3	2	1	4	12
2006	2	3	2	1	4	12
2007	2	3	3	1	4	13
2007/08	2	5	3	1	4	15
2008/09	2	7	4	1	4	18

Source: Statistics Section

Table 11 shows how the undergraduate Degree programmes offered have been increasing over time from 4 in 1994 to 18 in 2007/08. The table also shows how demand of various programmes has been increasing with time, calling for proportionate increase of the number of the academic staff to meet the demand

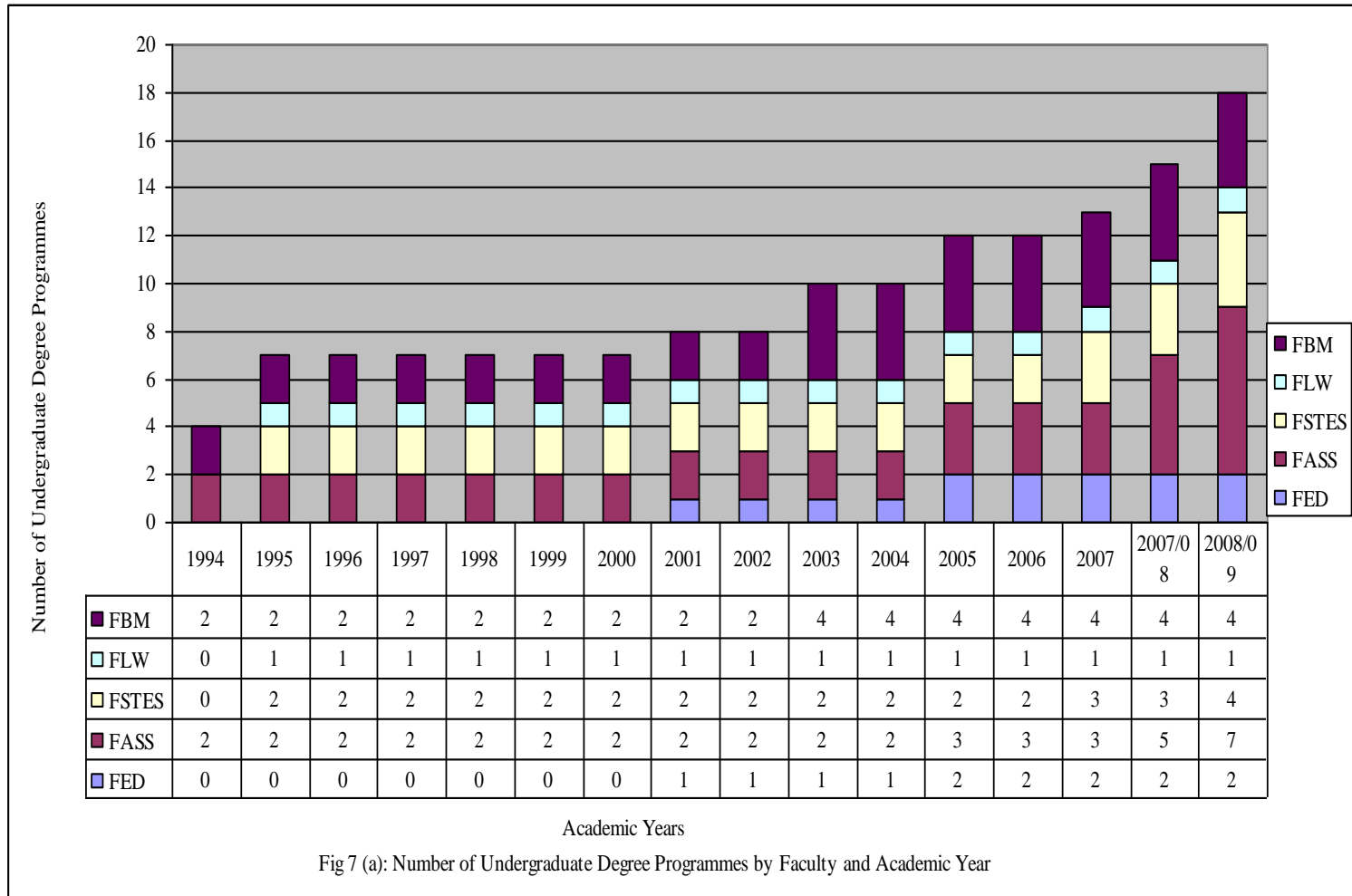


Fig 7 (a): Number of Undergraduate Degree Programmes by Faculty and Academic Year

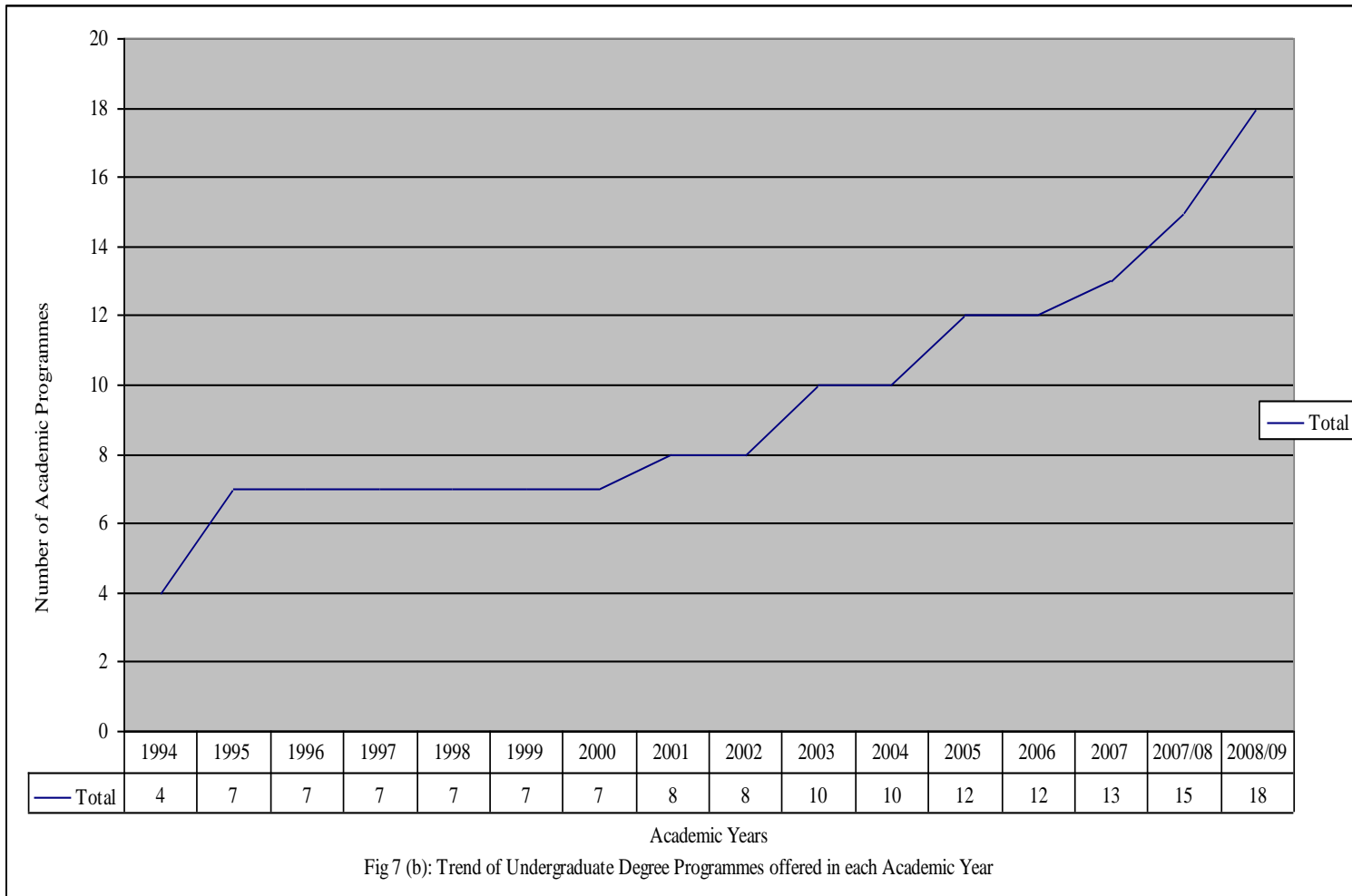


Fig 7 (b): Trend of Undergraduate Degree Programmes offered in each Academic Year

Table 12: Number of Postgraduate Programmes per Faculty

Years	Faculties					Total
	FED	FASS	FSTES	FLW	FBM	
2001	4	3	2	3	0	12
2002	4	3	2	3	1	13
2003	4	3	2	3	1	13
2004	4	3	2	3	1	13
2005	4	3	2	3	2	14
2006	6	9	7	3	2	27
2007	6	9	7	3	2	27
2008	6	9	7	3	2	27

Source: Statistics Section

Table 12 indicates doubling of postgraduate programmes in four years period from 13 programmes in 2004 to 27 programmes in 2008. This increase reflects change of mindset for postgraduate studies through the Open University of Tanzania

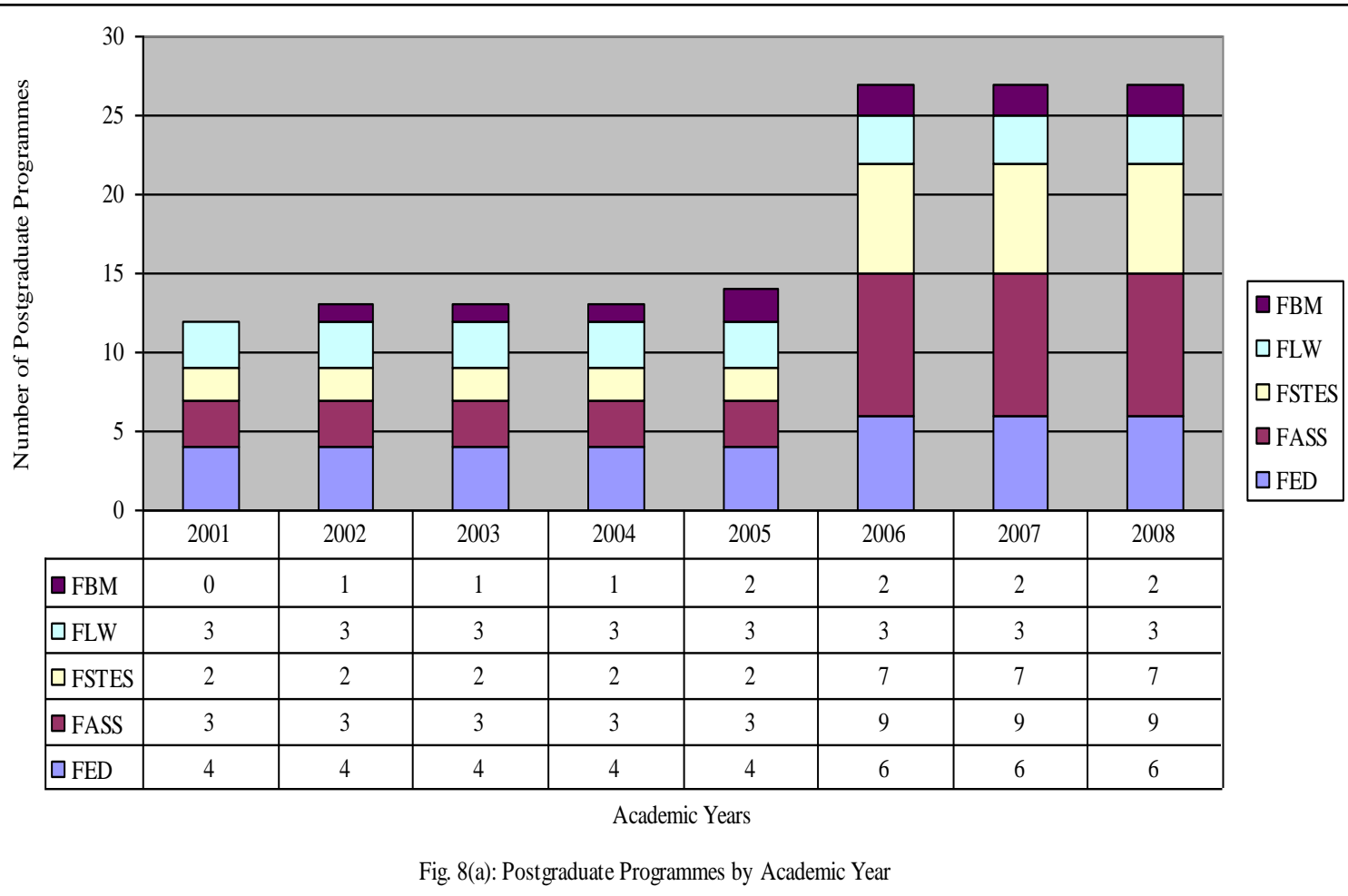


Fig. 8(a): Postgraduate Programmes by Academic Year

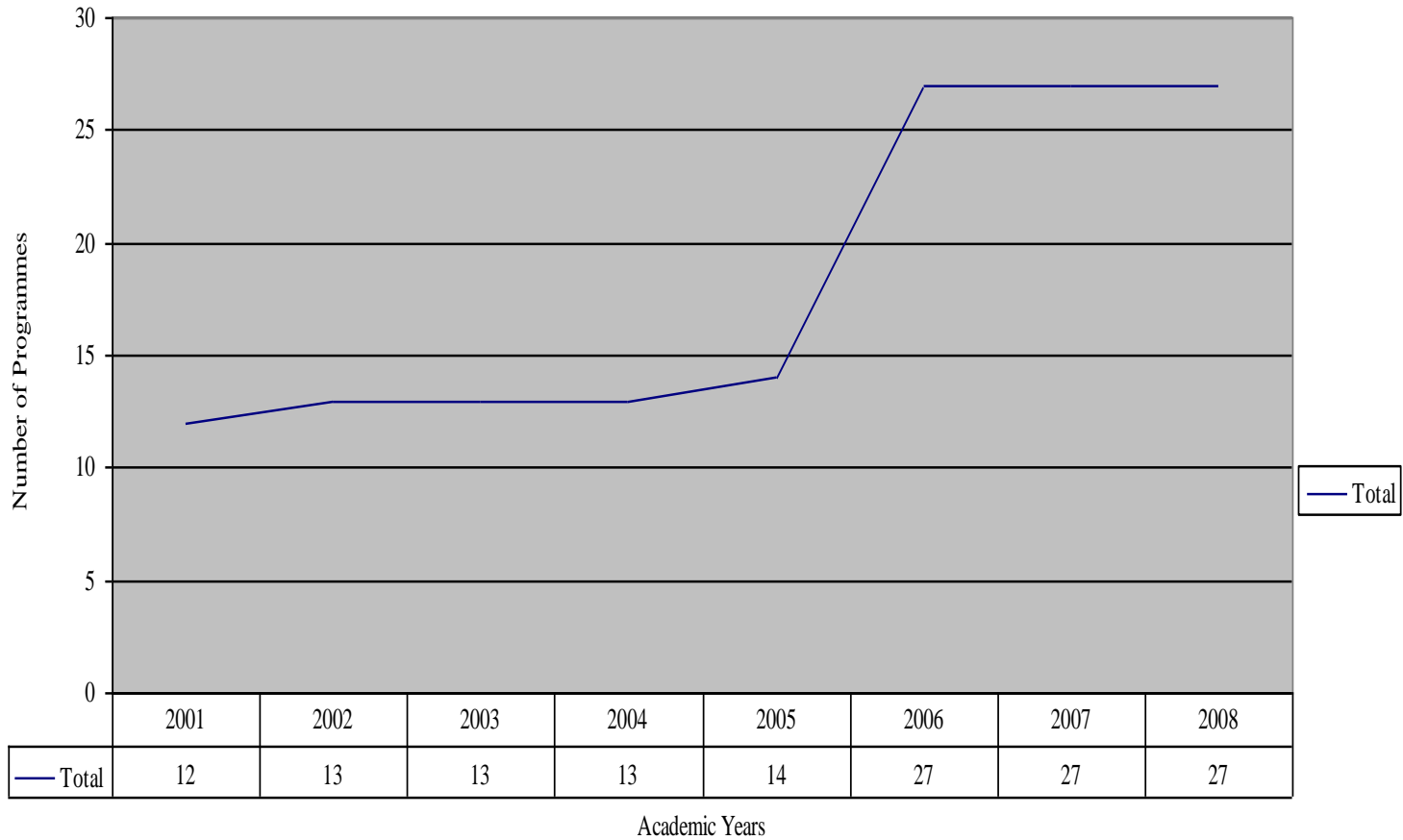


Fig. 8(b): Trend of Postgraduate Programmes from 2001 - 2008

Table 13(a): Distribution of Graduands by Programme, Gender and Academic Year

Year		1999			2000			2001			2002			2003			2004			2005		
Programme	Gender	M	F	T	M	F	T	M	F	T	M	F	T	M	F	T	M	F	T	M	F	T
CCDE		0	0	0	0	0	0	6	5	11	6	2	8	3	2	5	6	1	7	1	1	2
PTE - Certificate		0	0	0	0	0	0	0	0	0	0	0	0	0	0	0	0	0	0	0	0	0
CYP - Diploma		0	0	0	0	0	0	0	0	0	10	1	11	14	2	16	31	22	53	25	11	36
OFC		107	35	142	20	8	28	24	15	39	42	34	76	60	34	94	122	67	189	198	166	364
ODDEOL		0	0	0	0	0	0	0	0	0	0	0	0	0	0	0	0	0	0	0	0	0
B.A. (Gen.)		0	0	0	4	0	4	10	1	11	8	1	9	8	1	9	12	3	15	6	2	8
B.A.(Ed.)		12	4	16	31	8	39	29	11	40	20	7	27	15	8	23	27	8	35	35	18	53
B.Com.(Gen.)		0	0	0	2	0	2	14	1	15	14	1	15	22	3	25	30	7	37	50	14	64
B.Com.(Ed.)		0	0	0	0	0	0	4	1	5	0	0	0	1	0	1	5	0	5	3	1	4
BBA (Gen.)		0	0	0	0	0	0	0	0	0	0	0	0	0	0	0	0	0	0	0	0	0
BBA(Ed.)		0	0	0	0	0	0	0	0	0	0	0	0	0	0	0	0	0	0	0	0	0
B. Ed.		0	0	0	0	0	0	0	0	0	0	0	0	0	0	0	0	0	0	6	3	9
B. Sc. (Gen.)		0	0	0	1	0	1	0	0	0	0	0	0	7	1	8	16	4	20	16	6	22
B. Sc. (Ed.)		0	0	0	0	0	0	0	0	0	0	0	0	9	6	15	10	2	12	6	2	8
LL.B		0	0	0	0	0	0	0	0	0	15	1	16	61	5	66	71	11	82	104	12	116
MSc. CED		0	0	0	0	0	0	0	0	0	0	0	0	34	10	44	0	0	0	59	33	92
M.SC.		0	0	0	0	0	0	0	0	0	0	0	0	0	0	0	0	0	0	0	0	0
M. A.		0	0	0	0	0	0	0	0	0	0	0	0	0	0	0	4	0	4	1	0	1
M.Ed.		0	0	0	0	0	0	0	0	0	0	0	0	0	0	0	0	0	0	2	0	2
PGDL		0	0	0	0	0	0	0	0	0	0	0	0	0	0	0	0	0	0	0	1	1
PGDE		0	0	0	0	0	0	0	0	0	0	0	0	0	0	0	0	0	0	0	0	0
LL.M		0	0	0	0	0	0	0	0	0	0	0	0	0	0	0	0	0	0	0	0	0
MBA		0	0	0	0	0	0	0	0	0	0	0	0	0	0	0	0	0	0	0	0	0
Honorary Degree		1	0	1	1	0	1	0	0	0	1	0	1	1	0	1	0	0	0	0	0	0
Ph.D		0	0	0	0	0	0	0	0	0	0	0	0	0	0	0	0	0	0	0	0	0
Total		120	39	159	59	16	75	87	34	121	116	47	163	235	72	307	334	125	459	512	270	782

Source: Examinations Office

Table 13(a): Cont...

Year		2006			2007			2008			Total (1999 - 2008)		
Programme	Gender	M	F	T	M	F	T	M	F	T	M	F	T
CCDE		0	0	0	0	0	0	0	0	0	22	11	33
PTE - Certificate		0	0	0	202	86	288	21	18	39	223	104	327
CYP - Diploma		9	6	15	29	12	41	13	8	21	131	62	193
OFC		218	165	383	193	204	397	285	287	572	1269	1015	2284
ODDEOL		0	0	0	0	0	0	2	1	3	2	1	3
B.A. (Gen.)		18	4	22	21	2	23	29	18	47	116	32	148
B.A. (Ed.)		34	27	61	64	33	97	41	37	78	308	161	469
B.Com.(Ed.)		18	5	23	6	2	8	8	4	12	164	37	201
B.Com.(Ed.)		1	2	3	4	2	6	4	0	4	22	6	28
BBA (Gen.)		26	11	37	22	18	40	45	31	76	93	60	153
BBA (Ed.)		1	0	1	0	0	0	0	0	0	1	0	1
B. Ed.		7	15	22	36	42	78	39	37	76	88	97	185
B. Sc. (Gen.)		15	8	23	19	11	30	25	14	39	99	44	143
B. Sc. (Ed.)		3	3	6	14	7	21	3	4	7	45	24	69
BSC(ICT)		0	0	0	0	0	0	9	1	10	9	1	10
LLB		81	7	88	78	17	95	58	11	69	468	64	532
MSc. CED		0	0	0	61	43	104	0	0	0	154	86	240
M.SC.		0	0	0	2	0	2	1	0	1	3	0	3
M. A.		1	0	1	2	0	2	2	2	4	10	2	12
M.Ed.		0	0	0	2	0	2	2	0	2	6	0	6
PGDL.		0	0	0	4	0	4	3	1	4	7	2	9
PGDE		1	2	3	6	1	7	7	3	10	14	6	20
LL.M		1	0	1	2	0	2	2	0	2	5	0	5
MBA		0	0	0	6	3	9	18	4	22	24	7	31
Honorary Degree		0	1	1	0	0	0	0	0	0	4	1	5
Ph.D		4	0	4	0	0	0	3	0	3	7	0	7
Total		438	256	694	773	483	1256	620	481	1101	3295	1823	5117

Table 13(a) indicates a growing trend of graduands in various programmes with a few fluctuations from 159 graduands in 1999 during the first graduation of the OUT to 1101 graduands in the year 2008. This is an average of about 500 graduands per year.

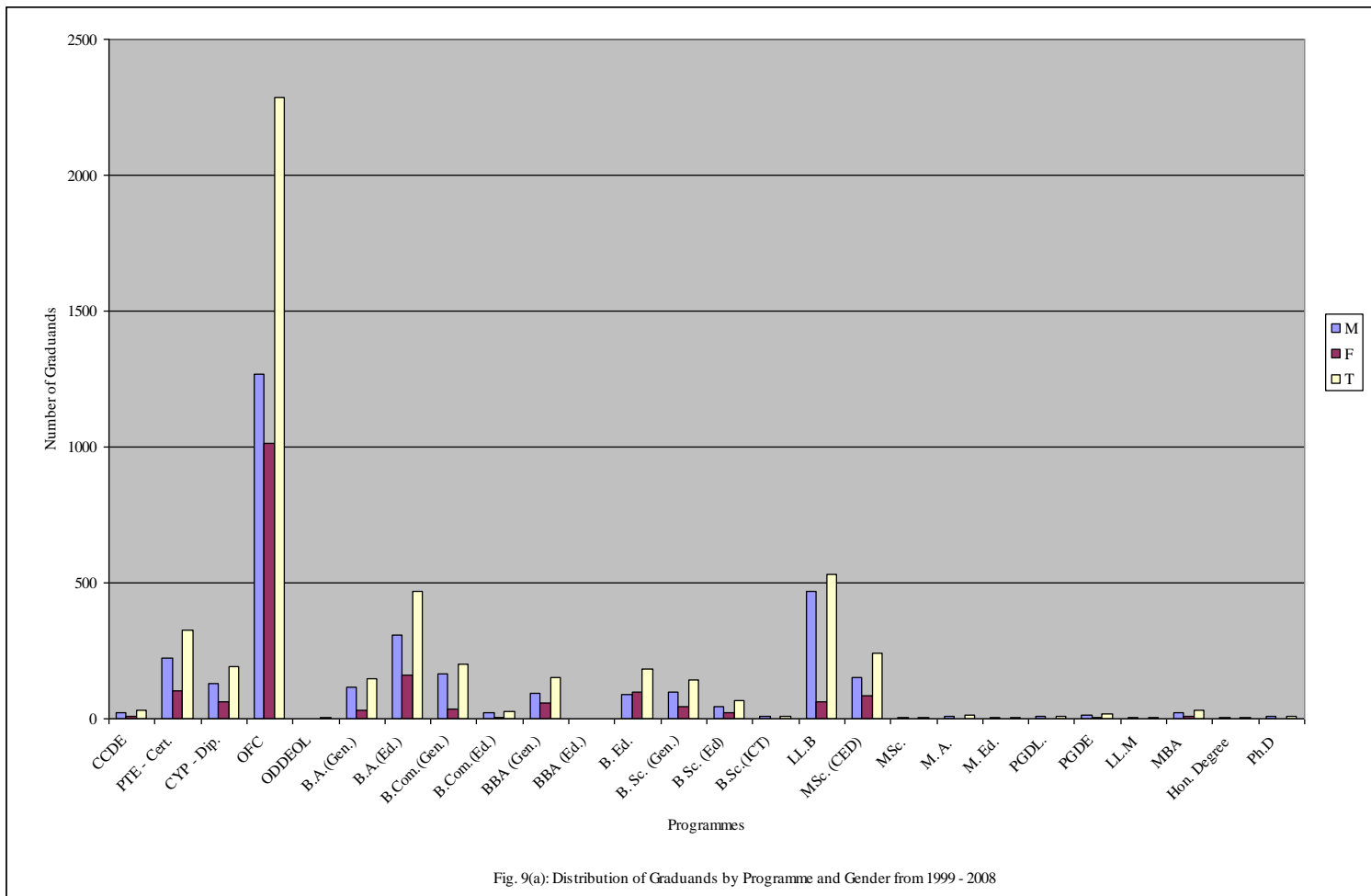


Fig. 9(a): Distribution of Graduands by Programme and Gender from 1999 - 2008

Fig. 9(a) portrays accumulative distribution of graduands by programme with highest graduands record being in the OFC programme

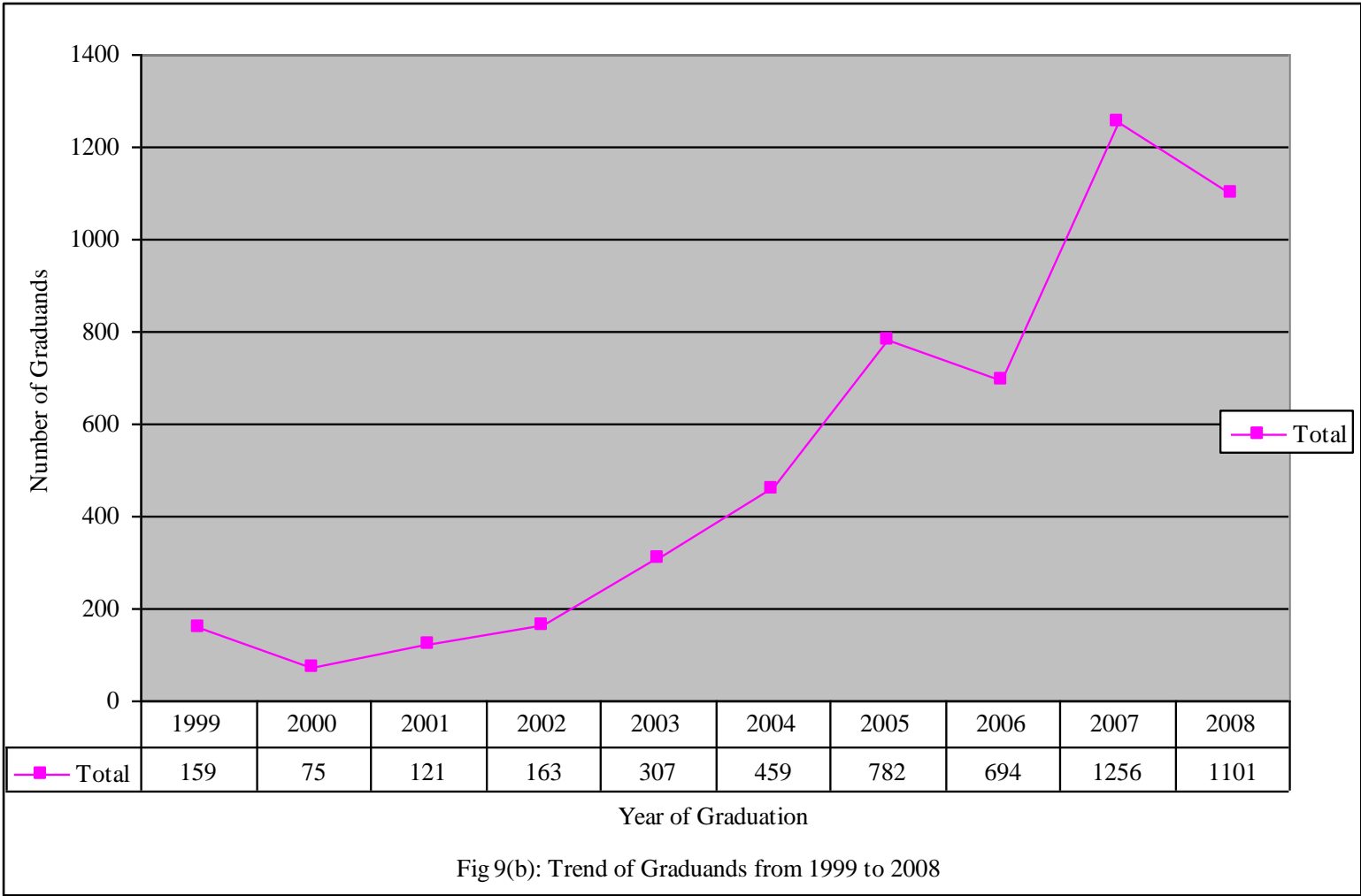


Fig 9(b): Trend of Graduands from 1999 to 2008

Table 13(b): Distribution Of Graduands by Regional / Coordination Centres and Gender for October 2008

Arusha			Dar es salaam			Dodoma			Iringa			Kagera			Kigoma			Kilimanjaro			Lindi			manyara		
M	F	T	M	F	T	M	F	T	M	F	T	M	F	T	M	F	T	M	F	T	M	F	T	M	F	T
37	24	61	260	270	530	14	7	21	42	24	66	12	10	22	3	0	3	34	59	93	4	7	11	15	2	17

Table 13(b) cont ...

Mara			Mbeya			Morogoro			Mtwara			Mwanza			Pemba			Pwani			Rukwa			Ruvuma		
M	F	T	M	F	T	M	F	T	M	F	T	M	F	T	M	F	T	M	F	T	M	F	T	M	F	T
14	5	19	20	9	29	31	16	47	6	3	9	19	5	24	3	0	3	13	13	26	7	3	10	14	6	20

Table 13(b) cont ...

Shinyanga			Singida			Tabora			Tanga			Zanzibar			Kenya		
M	F	T	M	F	T	M	F	T	M	F	T	M	F	T	M	F	T
8	3	11	8	1	9	9	1	10	14	6	20	23	2	25	11	5	16

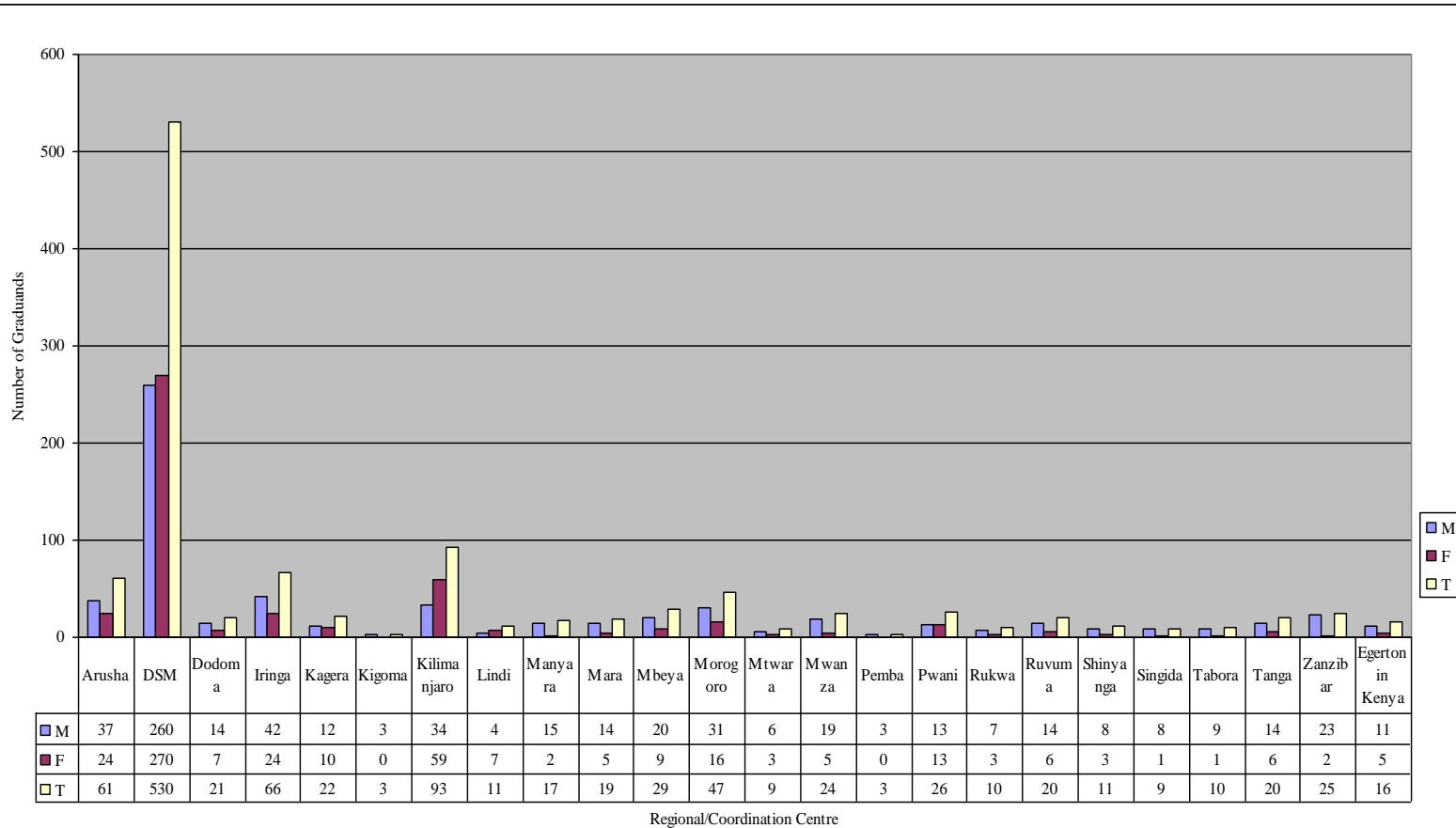


Fig. 9(c): Graduands Distribution by Gender and Regional/Coordination Centre for the October 2008 Graduation

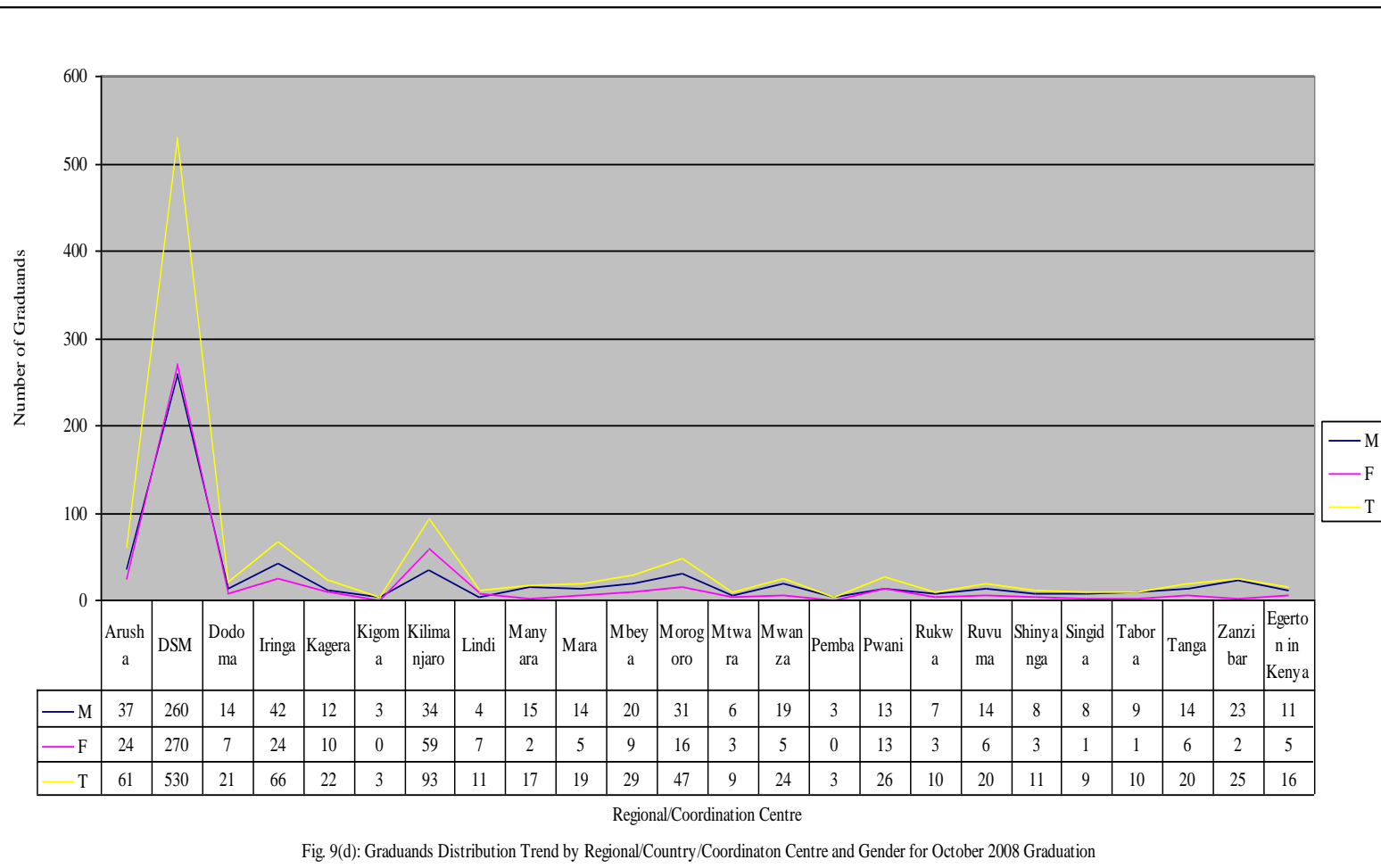


Fig. 9(d): Graduands Distribution Trend by Regional/Country/Coordination Centre and Gender for October 2008 Graduation

Table 14: Academic Staff by Qualification and Gender

Year	PhD			Masters			First Degree			Total		
	M	F	T	M	F	T	M	F	T	M	F	T
2001	17	1	18	44	13	57	1	0	1	62	14	76
2002	20	1	21	41	14	55	0	0	0	61	15	76
2003	26	2	28	37	11	48	0	0	0	63	13	76
2004	28	5	33	42	10	52	0	0	0	70	15	85
2005	30	7	37	58	13	71	1	0	1	89	20	109
2006	30	7	37	64	18	82	2	0	2	96	25	121
2007	41	9	50	72	22	94	17	11	28	130	42	172
2008	44	9	53	67	30	97	37	20	57	148	59	207

Source: Statistics Section

Table 14 shows that the increase of academic staff more than doubled from 76 in 2003 to 207 in 2008.

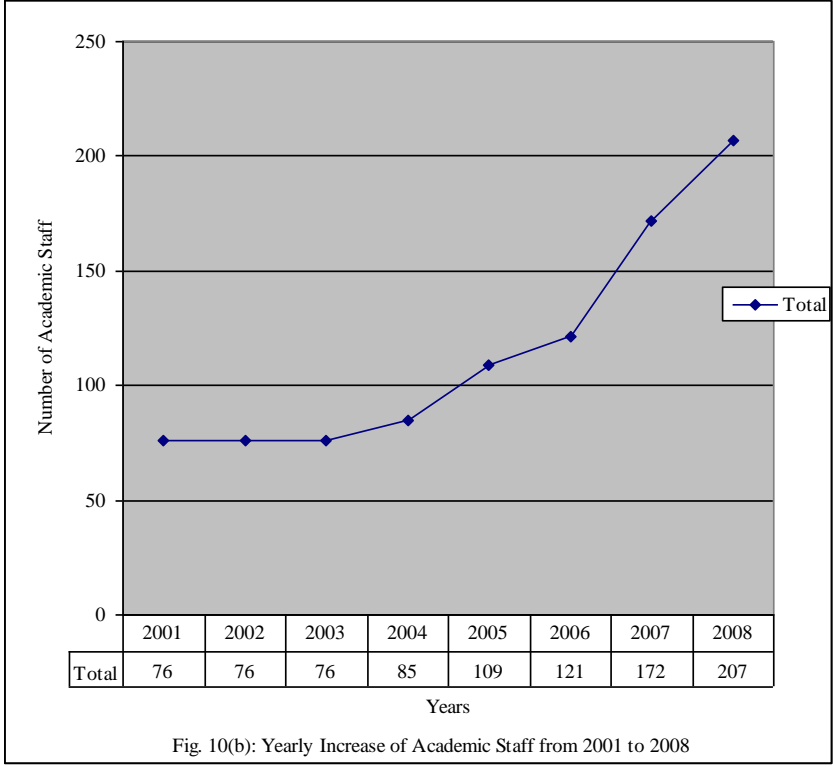
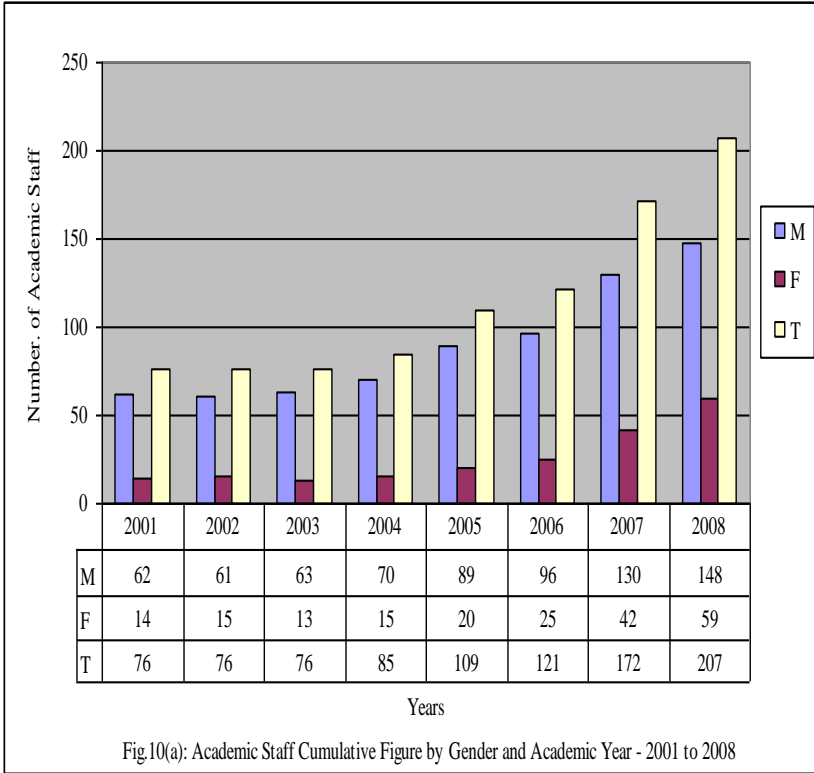


Table 15: Percentage of Female Academic Staff by Qualification

Year	PhD	Masters	First Degree	Average
	%F	%F	%F	
2001	5.6	22.8	0.0	14.2
2002	4.8	25.5	0.0	15.2
2003	7.1	22.9	0.0	15.0
2004	15.2	19.2	0.0	17.2
2005	18.9	18.3	0.0	18.6
2006	18.9	22.0	0.0	20.5
2007	18.0	23.4	23.4	21.6
2008	17.0	30.9	35.1	27.7

Source: Computed from Table 14

Table 16: Academic Staff by Rank, Gender and Year

Year	Full Prof.			Ass. Prof.			Sen. Lect.			Lecturer			Asst. Lect.			TA			Total		
	M	F	T	M	F	T	M	F	T	M	F	T	M	F	T	M	F	T	M	F	T
2002	6	0	6	2	0	2	4	0	4	9	2	11	38	14	52	1	0	1	60	16	76
2003	6	0	6	4	0	4	1	1	2	14	0	14	37	11	48	2	0	2	65	11	76
2004	8	0	8	5	0	5	2	1	3	11	2	13	35	12	47	0	0	0	62	14	76
2005	9	0	9	5	0	5	7	2	9	25	8	33	44	9	53	0	0	0	91	18	109
2006	6	0	6	6	0	6	6	2	8	31	11	42	45	12	57	2	0	2	97	24	121
2007	5	0	5	11	0	11	7	2	9	38	9	47	54	19	73	16	11	27	131	41	172
2008	8	0	8	9	0	9	7	2	9	36	14	50	51	23	74	37	20	57	148	59	207

Source: Statistics Section

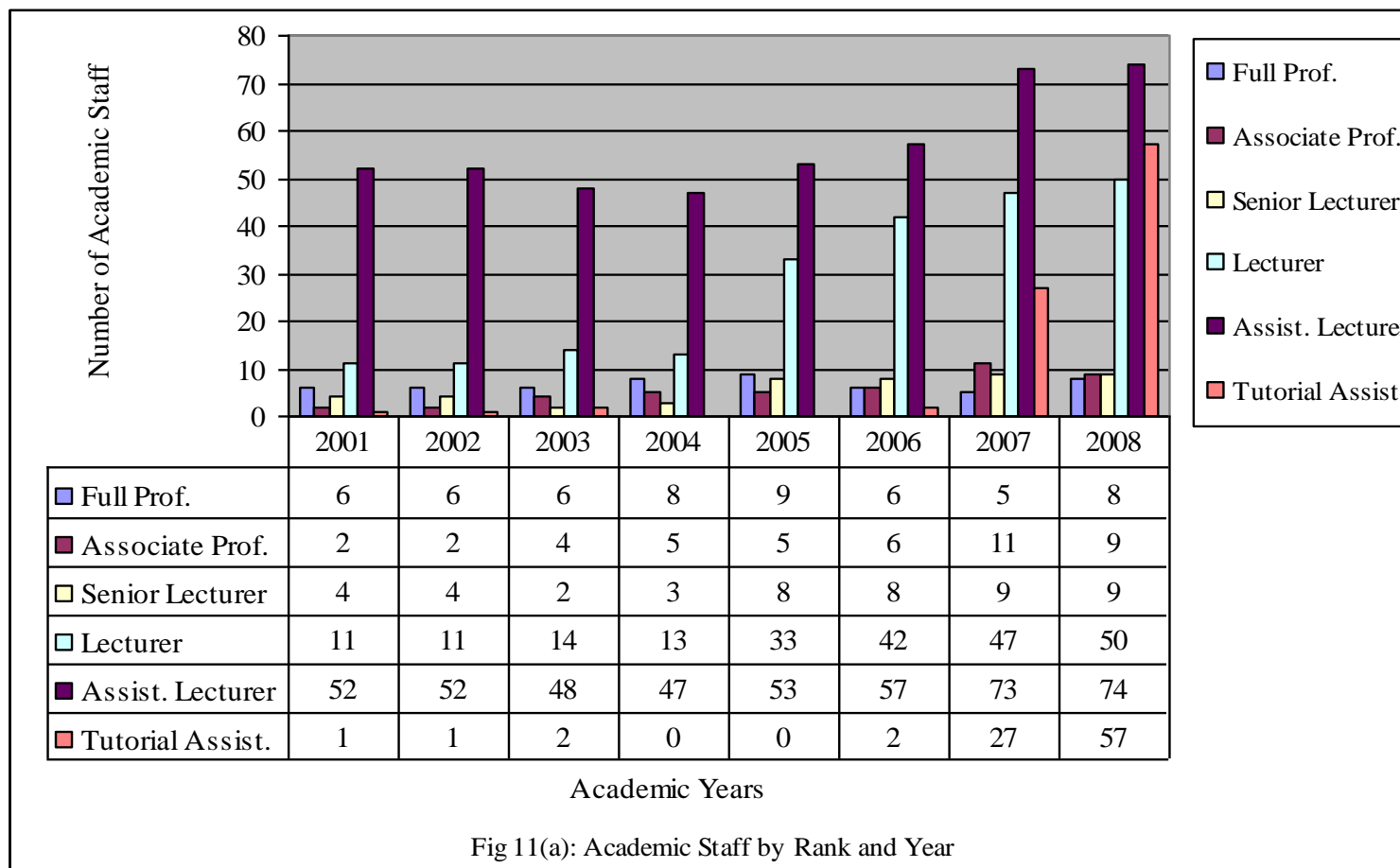


Fig. 11 (a) and (c) portray academic staff by rank and year. The rank of Assistant Lecturers is the highest in every year.

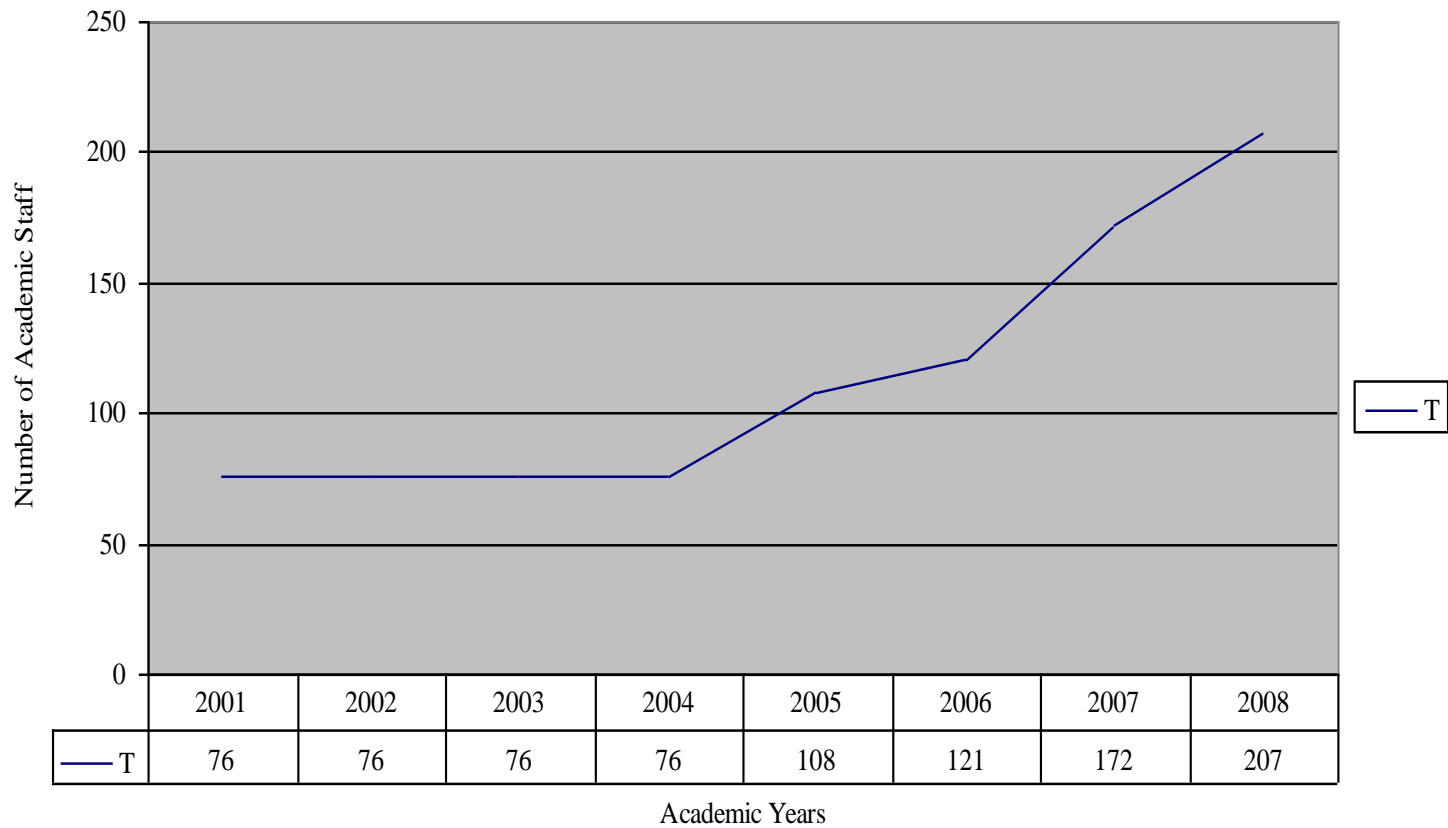


Fig.11(b): Yearly Increase of Academic Staff

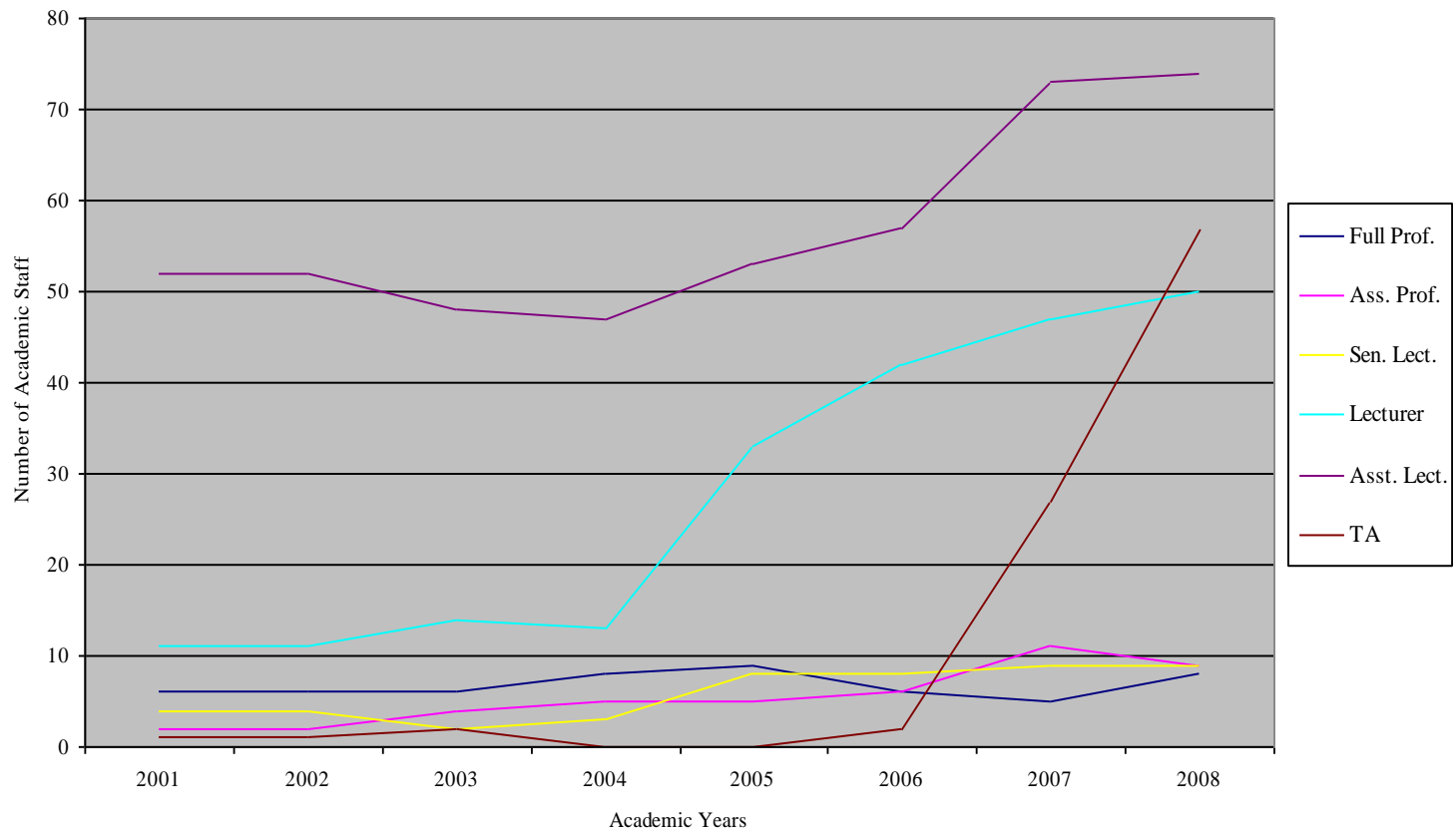


Fig. 11(c): Trend of Academic Staff by Rank and Academic Year

Table 17: Female Academic Staff as Percentage of Total Academic Staff by Rank and Year

Year	Full Prof	Ass. Prof.	Sen. Lecturer	Lecturer	Ass. Lecturer	Tutorial Ass.	Average
	%F	%F	%F	%F	%F	%F	
2002	0.0	0.0	0.0	18.2	26.9	0.0	22.6
2003	0.0	0.0	50.0	0.0	22.9	0.0	36.5
2004	0.0	0.0	33.3	15.4	25.5	0.0	24.6
2005	0.0	0.0	25.0	24.2	17.0	0.0	22.1
2006	0.0	0.0	25.0	26.2	21.1	0.0	24.1
2007	0.0	0.0	22.2	19.1	26.0	40.7	27.0
2008	0.0	0.0	22.2	28.0	31.5	35.7	29.4

Source: Computed from Table 16

Table 17 shows a fluctuating percentage increase of female academic staff. However, the fluctuations, the percentage increase is quite significant showing the OUT's determination of increasing the number of academic female staff as outlined in the Rolling Strategic Plan.

Table 18: Academic Staff Profile by Age and Gender – 2008

Group	Age Groups (Years)	Numbers of Academic Staff		Total
	Age	Male	Female	
I	≤ 30	13	9	22
II	31 – 35	29	17	46
III	36 – 40	22	11	33
IV	41 – 45	17	4	21
V	46 – 50	19	4	23
VI	51 – 55	15	9	24
VII	56 – 60	13	4	17
VIII	61 – 65	12	1	13
IX	66 - 70	5	0	5
X	≥ 71	3	0	3
Total		148	59	207

Source: Statistics Section

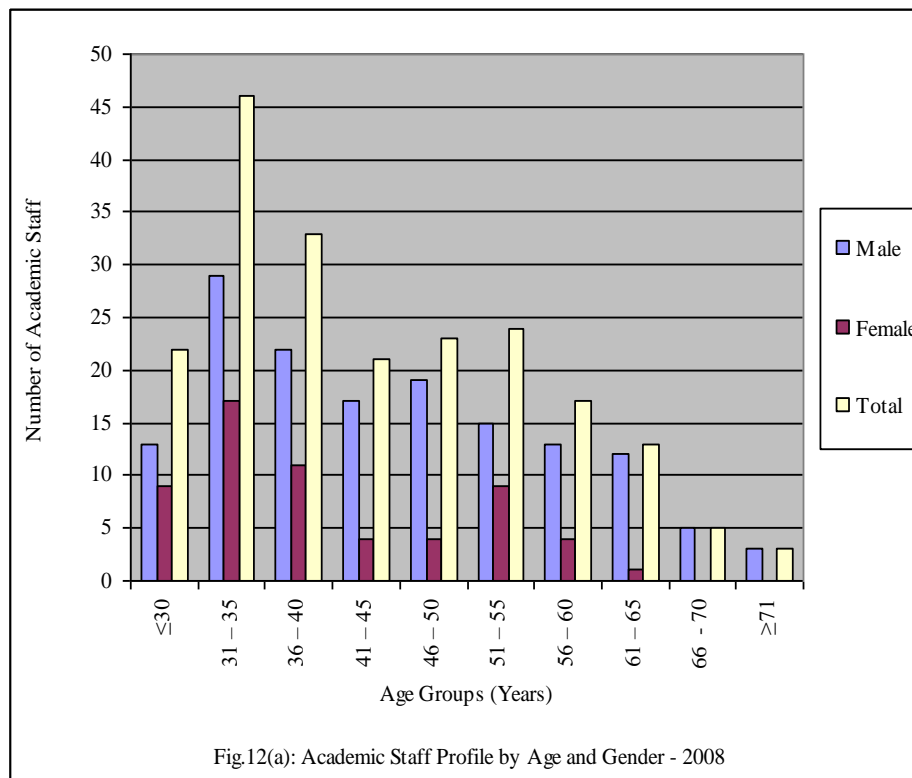


Fig.12(a): Academic Staff Profile by Age and Gender - 2008

Table 18 indicates the current status of Academic Staff by Age and Gender

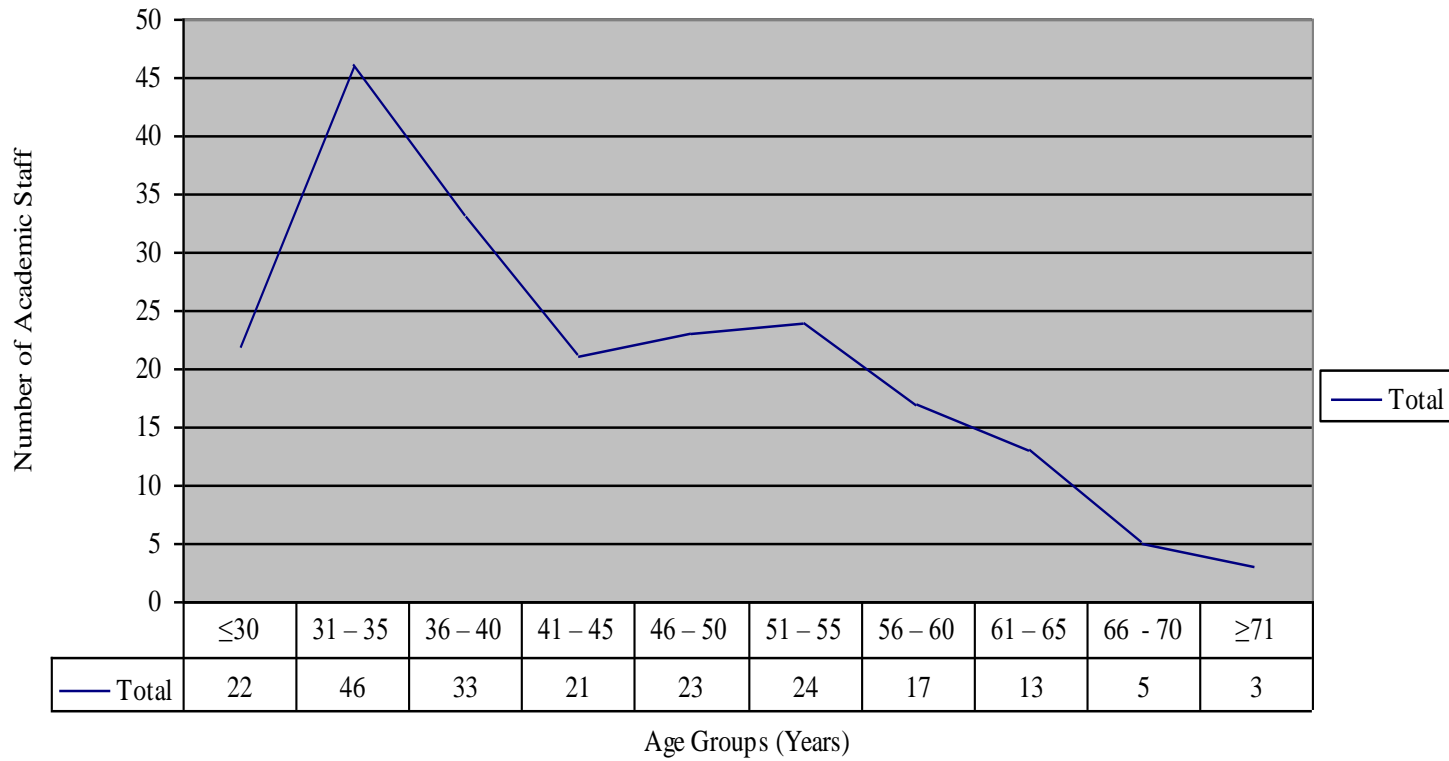
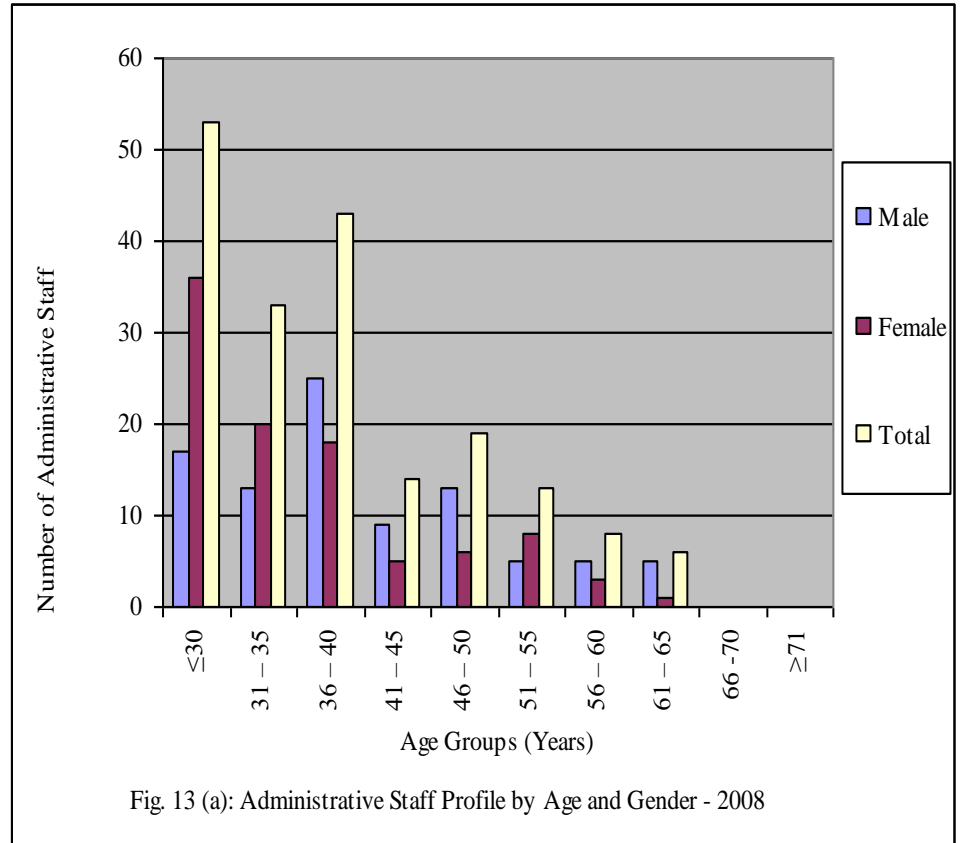


Fig.12 (b): Displays Trend of Academic Staff Age Profile for 2008

Table 19: Administrative Staff Profile by Age and Gender 2008

Group	Age Groups (Years)	Numbers of Administrative Staff		Total
	Age	Male	Female	
I	≤ 30	17	36	53
II	31 – 35	13	20	33
III	36 – 40	25	18	43
IV	41 – 45	9	5	14
V	46 – 50	13	6	19
VI	51 – 55	5	8	13
VII	56 – 60	5	3	8
VIII	61 – 65	5	1	6
IX	66 -70	0	0	0
X	≥ 71	0	0	0
Total		92	97	189

Source: Statistics section



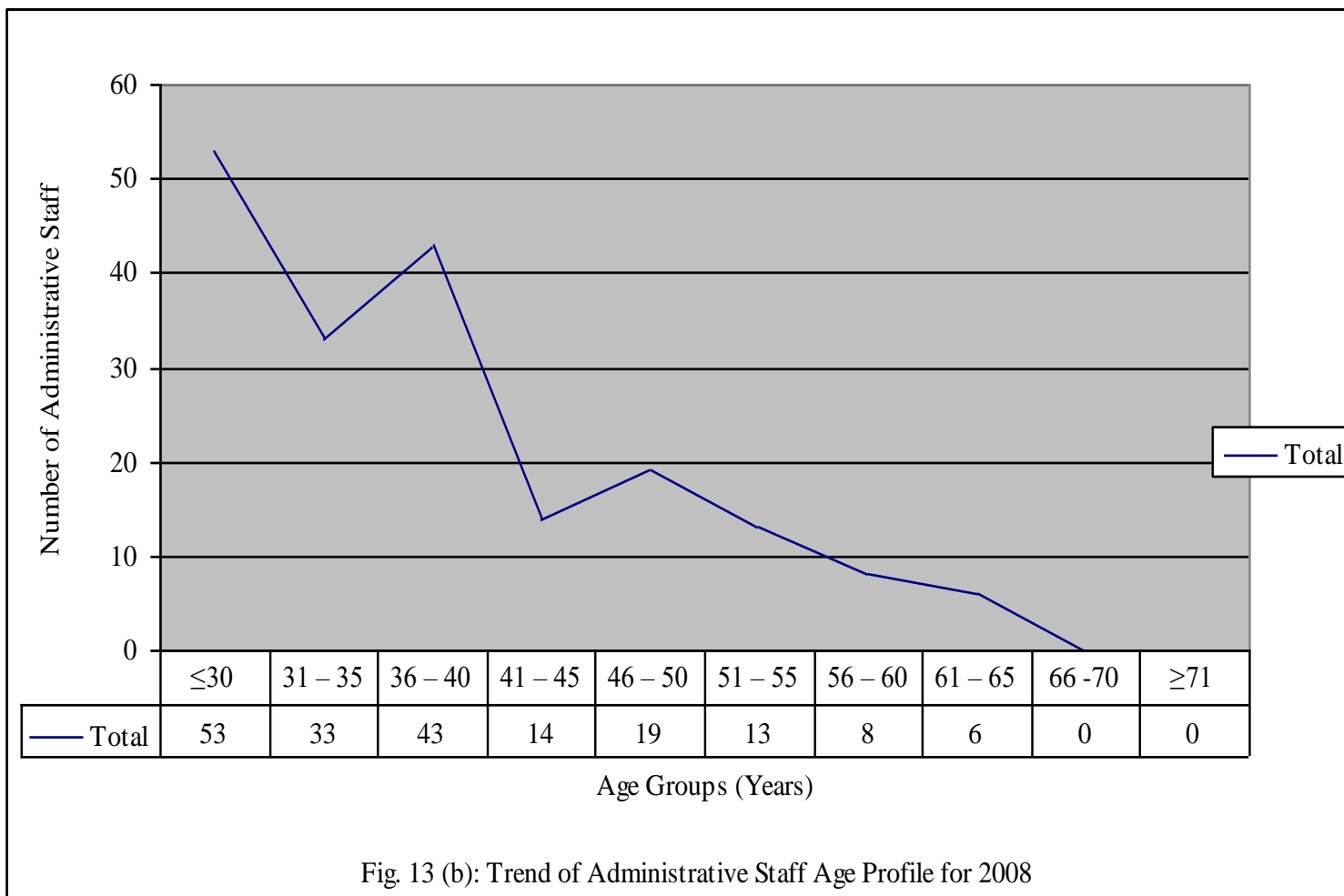


Table 20: Administrative Staff by the Highest Academic Qualification and Gender 2008

PhD			Masters			PGD			1st Degree			ADV. DIP			OD			Certificate			Form VI			Form IV			Std VIII			STD VII			Total		
M	F	T	M	F	T	M	F	T	M	F	T	M	F	T	M	F	T	M	F	T	M	F	T	M	F	T	M	F	T	M	F	T	M	F	T
0	0	0	9	4	13	4	1	5	23	11	34	7	1	8	8	20	28	21	50	71	9	2	11	2	7	9	1	0	1	8	1	9	92	97	189

Source: Statistics Section

