

THE OPEN UNIVERSITY OF TANZANIA



FACULTY OF ARTS AND SOCIAL SCIENCES

Academic year

2022/2023

HANDBOOK

THE OPEN UNIVERSITY OF TANZANIA



FACULTY OF ARTS AND SOCIAL SCIENCES

HANDBOOK

2022/2023

The Open University of Tanzania
Kawawa Road, Kinondoni Municipality,
P. O. Box 23409
DAR ES SALAAM
TANZANIA
Office Tel Direct: +255 22 2668835
Fax: +255(0)22-2668759
E-mail: dfass@out.ac.tz
Website: <http://www.out.ac.tz/fass>

FACULTY OF ARTS AND SOCIAL SCIENCES

HANDBOOK

2022/2023

Prologue

Welcome to the Faculty of Arts and Social Sciences at the Open University of Tanzania (OUT). This Handbook is designed to orient you to the Faculty. It contains information on the academic development opportunities available to you and the many resources to help you find advice and make good choices as you get started and continue; and also a source of information to look back on throughout the year. This is the Faculty guide, so the information is based on experience and daily activities as an undergraduate or postgraduate student or staff. As well as providing a brief introduction to the OUT, it outlines important faculty policies and procedures, provides information about resources available, and directs students to the location of other resources and useful information.

Comments or suggestions for matters that might be amended or usefully covered in subsequent editions of this booklet would be welcome. They should be sent to: fass.staff@out.ac.tz.

PREFACE



Dr. Dunlop Ochieng
Dean, Faculty of Arts and Social Sciences

It is my pleasure to present to you this year's handbook of the Faculty of Arts and Social Sciences, which among other things, is intended at creating awareness of the Faculty, in all its core areas. The Faculty of Arts and Social Sciences is one of the 5 Faculties of the Open University of Tanzania. It is the oldest at the Open University of Tanzania. It first admitted students in 1994 when the University had its first enrollment. FASS is the largest faculty and prides itself in the wide range of courses and course combinations it offers at both undergraduate and postgraduate levels. Currently the Faculty is staffed with about 85 permanent academic staff, of whom 5 are professors, 23 are PhD holders, 48 hold Masters degrees and 9 are Tutorial assistants. The faculty has nine academic departments and one centre: History and Library Studies, Political Science and Public Administration, Geography, Linguistic and Literary Studies, Journalism and Media Studies, Tourism and Hospitality, Sociology and Social Work, Economics and Community Economic Development and Center for Economics and Community Economic Development. I hope that new as well as continuing students will utilize information provided in this handbook to work hard in their studies. The handbook will also provide relevant FASS specific information that complements the main OUT prospectus, which various stakeholders will find most relevant.

Of course, no handbook can cover every possible detail; if you have any queries or need clarification on any issue concerning FASS programmes, your first point of contact is the staff in the Faculty – they are always happy to help you (Ms. Zitha Kessy and Mr. Revocatus Biro, Block C, First Floor, Left Wing). Each programme also has a Coordinator whose job it is to deal with queries that cannot be resolved by the Faculty of Arts and Social Sciences in its general sense. And, of course, personal matters should be discussed with your Course Instructor in person. Be sure to make a note of the e-mail addresses and office hours of both the Coordinator for your programme and your Course Instructor. Let me end my introductory remarks by expressing my gratitude to all individuals who have made production of this handbook possible. The handbook is available in both hard copy and in electronic copy in our website (www.out.ac.tz/fass).

I wish you all the best of 2022/2023 academic year.

Dr. Dunlop Ochieng
Dean, FASS

Table of Contents

| | |
|------------------------|-------------------------------------|
| Prologue..... | 3 |
| PREFACE..... | Error! Bookmark not defined. |
| Table of Contents..... | 4 |
| PART ONE..... | 7 |

| | |
|---|-------------------------------------|
| Introducing the Faculty of Arts and Social Sciences | 7 |
| FASS Vision | 7 |
| FASS Mission | 7 |
| FASS Organization Structure | 8 |
| Faculty Administration | 9 |
| Heads of Department | 9 |
| Coordinators of Academic Programmes | Error! Bookmark not defined. |
| Research, Publication and Consultancy Coordinators by Departments | Error! Bookmark not defined. |
| Faculty Bank Accounts for Postgraduate Programmes | Error! Bookmark not defined. |
| PART TWO | 11 |
| Undergraduate and Non-degree Programmes | 11 |
| Who's Eligible for Direct Enrolment in FASS Programmes? | 11 |
| How Should a Student Approach the Programme as a Whole? | 11 |
| What about Exams? | 11 |
| Which Code Stands for what, and How do I Choose Subjects? | 11 |
| Bachelor Degree Programmes | 12 |
| Reading Materials and Library Services | 12 |
| MOODLE and the Internet | 12 |
| Centre for Economics and Community Economic Development (CECED) | 13 |
| Department of Economics | Error! Bookmark not defined. |
| Bachelor of Arts in Economics (BA Econ) | 13 |
| Department of Community Economic Development | Error! Bookmark not defined. |
| Development Studies | 14 |
| Bachelor of Community Economic Development (BCED) | 15 |
| Department of Linguistics and Literary Studies | Error! Bookmark not defined. |
| Bachelor of Arts in English Language and Linguistics (BA ELL) | 16 |
| Bachelor of Arts in Literature (BALIT) | Error! Bookmark not defined. |
| Bachelor of Arts in Kiswahili and Creative Studies (BA KISW) | Error! Bookmark not defined. |
| Department of Geography | 19 |
| Bachelor of Arts in Natural Resources Management (BA NRM) | 19 |
| Bachelor of Arts in Population and Development (BAPD) | Error! Bookmark not defined. |
| Department of History, Philosophy and Library Studies | Error! Bookmark not defined. |
| Bachelor of Arts in History (BA HIST) | Error! Bookmark not defined. |
| Bachelor of Library and Information Management (BLIM) | 33 |
| Department of Political Science and Public Administration | 23 |
| Bachelor of Arts in Public Administration (BAPA) | 23 |
| Bachelor of Arts in International Relations (BAIR) | 25 |
| Department of Tourism and Hospitality | Error! Bookmark not defined. |
| Bachelor of Arts in Tourism Management (BTM) | 21 |
| Department of Sociology and Social Work | 26 |
| Bachelor of Arts in Sociology (BASO) | 26 |
| Bachelor of Arts in Sociology (BASO) - NEW | Error! Bookmark not defined. |
| Bachelor of Social Work (BSW) | 27 |
| Department of Journalism and Media Studies | Error! Bookmark not defined. |
| Bachelor of Arts in Journalism (BA JOURNALISM) | 31 |
| Bachelor of Arts in Mass Communication (BA MASS COMM) | 32 |
| PART THREE | 35 |
| Postgraduate Programmes | 35 |
| How do you pay the Fees for FASS Postgraduate Programmes? | Error! Bookmark not defined. |
| Delivery Modes for Masters Programmes by Coursework | 35 |
| Programme Structure and Assessment | 35 |
| Face to Face Sessions | 36 |
| Duration of Programmes and Tuition Fees | 36 |
| Master of Arts in Governance and Leadership (MAGL) | 36 |
| Masters of Arts in International Cooperation and Development (MICD) | 37 |
| Masters of Humanitarian Action, Cooperation and Development (MHACD) | 37 |

| | |
|--|-------------------------------------|
| Master of Science in Economics (MSc Econ) | 37 |
| Master of Arts in Monitoring and Evaluation (MA M&E)..... | 38 |
| Master of Community Economic Development (MCED) | 38 |
| Master of Arts in History (MA History) | 38 |
| Master of Arts in Kiswahili | 39 |
| Master of Arts in Natural Resource Assessment and Management (MA NRAM) | 39 |
| Master in Tourism Planning Management (MTPM) | 40 |
| Master of Social Work (MSW)..... | 40 |
| Postgraduate Diploma in Social Work (PGDSW) | 41 |
| Master of Arts in Mass Communication (MA MC)..... | 42 |
| Master of Arts in Journalism (MA JOURNALISM) | 42 |
| Master in Library & Information Management (MLIM)..... | Error! Bookmark not defined. |
| Doctor of Philosophy Degree (PhD)..... | Error! Bookmark not defined. |
| How does an aspirant register for a PhD? And for how long does it last?..... | 43 |
| PART FOUR | 45 |
| List of FASS Staff | 45 |

PART ONE

Introducing the Faculty of Arts and Social Sciences

Tracing its origins back in 1992, the Faculty of Arts and Social Sciences (FASS) deserves a claim to be Open University of Tanzania's oldest faculty. The Open University of Tanzania (OUT) is an open and distance learning institution offering certificates, diplomas, degrees and postgraduate courses. The education delivery is attained through various means of communication such as broadcasting, telecasting, information and communication technologies, correspondence, enhanced face-to-face, seminars and contact programmes. It is a vibrant, lively and supporting intellectual community with diverse student body, committed to academic excellence. The University extends learning access beyond the traditional full-time residential student body, hence making it the first of its kind in East Africa.

The faculty has seven academic departments, two centers and one unit as also shown in the Faculty organizational structure. These are:

1. Department of History, Philosophy and Library Studies (HPLS)
2. Department of Political Science and Public Administration (PSPA)
3. Department of Geography (GEOG)
4. Department of Linguistics and Literary Studies (LLS)
5. Department of Journalism and Media Studies (JMS)
6. Department of Tourism and Hospitality (T&H)
7. Department of Sociology and Social Work (SOSW)
8. Department of Economics
9. Department of Community Economic Development (CED)

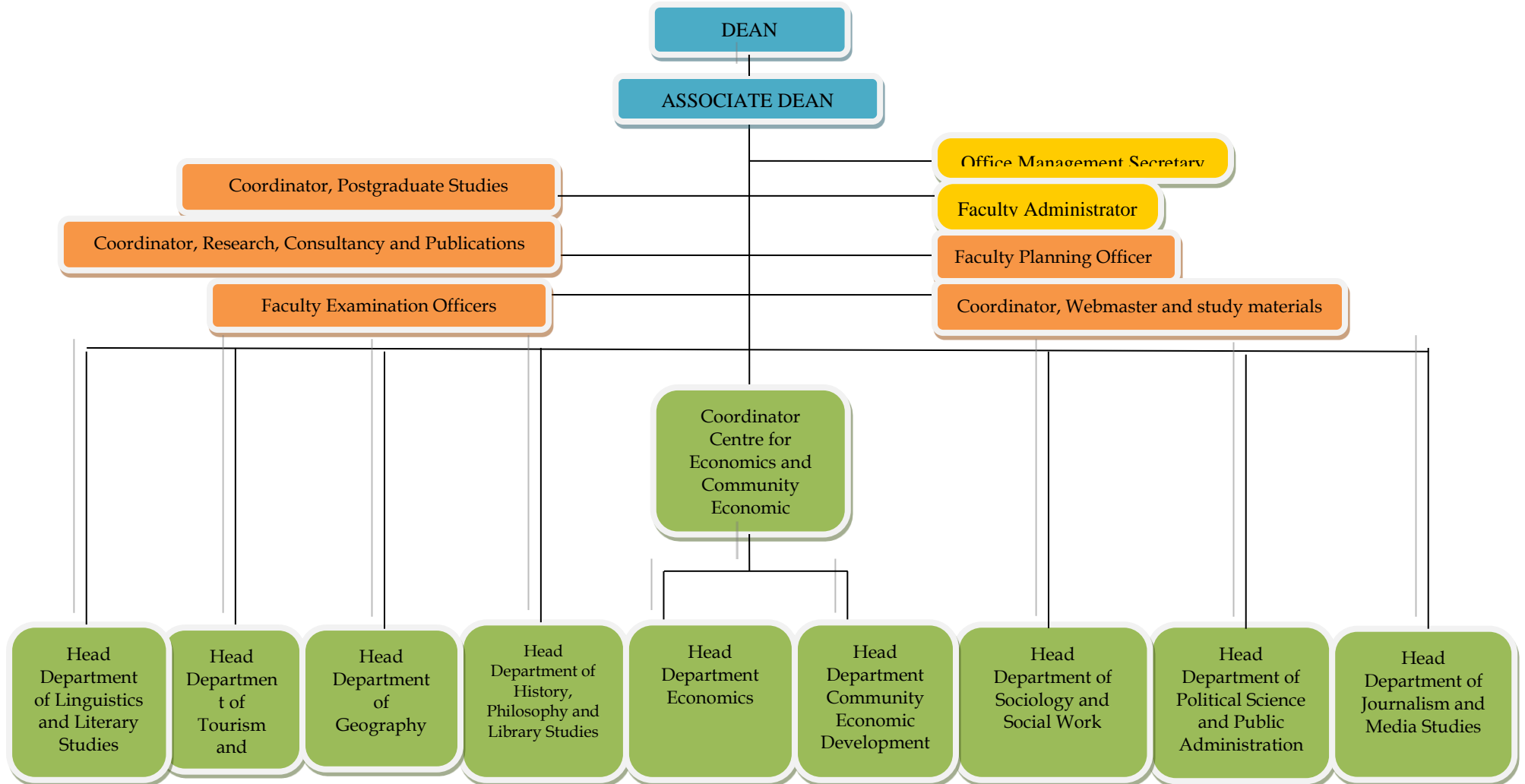
FASS Vision

The Faculty of Arts and Social Sciences embraces the teaching, research, creative activities and service objectives of the Open University of Tanzania. Thus FASS is committed to: providing its students with affordable high quality education in an atmosphere that promotes intellectual vigor, critical inquiry, citizenship and creative decision-making requisites for personal growth and professional success; encouraging exemplary scholarship of teaching, research and service leading to significant publications and performances; and transforming lives by creating and promoting opportunities for lifelong and flexible learning in order to match up with evolving local and global challenges.

FASS Mission

The aim of FASS is at creating and disseminating knowledge through teaching, learning, research and professional practice. It is committed to helping students achieve the highest academic standards. The faculty is dedicated to the fundamental principle that the role of higher education is to develop and nurture a creative, civil and life-sustaining society. Hence, its programmes promote civic engagement, examine our world and envision future possibilities.

FASS Organization Structure



Faculty Administration

Dean's office

Dean: **Dr. Dunlop Ochieng**

Direct Line: +255 22 2668835

Mobile: +255 684053363

E-mail: dunlop.ochieng@out.ac.tz

Coordinator of FASS Postgraduate Studies: **Dr. Ladislaus Batinoluho**

Mobile: +0714700188; E-mail: ladislaus.batinoluho@out.ac.tz

Faculty Examination Officer

1. **Mr. Alexander Ndibalema**

Mobile: +255717937935; E-mail: alexander.ndibalema@out.ac.tz

2. **Mr. Vincent Mpepo**

Mobile: +255755782983; E-mail: vincent.mpepo.julius@out.ac.tz

Faculty Planner: **Mr. Manning Yusuph**

Mobile: +255714742485; Email: hiltruda.maudi@out.ac.tz

Faculty Quality Assurance Coordinator: **Ms. Celia Muyinga**

Mobile: +255759803818; Email: celia.muyinga@out.ac.tz

Faculty Consultance and Community Outreach Coordinator: **Dr. Theresia Mugobi**

Mobile: +255757160110; Email: theresia.mugobi@out.ac.tz

Faculty Administrator: **Ms. Nuru Abdallah**

Mobile: +255758372355; E-mail: nuru.abdallah@out.ac.tz

Faculty Office Management Secretary: **Ms. Zitha Kessy**

Mobile: +255719068385; E-mail: zitha.kessy@out.ac.tz

Heads of Department

| Dept/Centre | Name | Email | Mobile |
|---|--------------------------|--|------------|
| Dean | Dr. Dunlop Ochieng | dunlop.ochieng@out.ac.tz | 0684053363 |
| Department of Linguistics and Literary Studies (LLS) | Dr. Zelda Elisifa | zelda.elisifa@out.ac.tz | 0623134276 |
| Department of Sociology and Social work(SOSW) | Dr. Mariana Makuu | mariana.makuu@out.ac.tz | 0716211283 |
| Department of Economics and Community Development (ECED) | Prof. Emmanuel Nyankweli | emmanuel.nyankweli@out.ac.tz | 0758177202 |
| Department of Media and Library Studies (MLS) | Dr. Henry Mambo | henry.mambo@out.ac.tz | 0754770325 |
| Department of Political Science, Public Administration, History and Philosophy (PSPAHP) | Dr. Jacob Lisakafu | jacob.lisakafu@out.ac.tz | 0768089044 |
| Department of Geography, Tourism and Hospitality Services (GTH) | Dr. Halima Kilungu | halima.kilungu@out.ac.tz | 0755931975 |

Coordinators of Academic Programmes

| S/N | Department | Programme | Coordinator | Phone No./mail |
|-----|------------|-----------|-------------|----------------|
|-----|------------|-----------|-------------|----------------|

| | | | | |
|----|---|---|--------------------------------------|--------------------------|
| 1. | Media and Library Studies | Library studies | Mr. Aziz Kagugu | 0762512521 |
| 2. | Sociology and Social Work | Bachelor of Social Work (BSW) | Alexander Ndibalema | 0752 605332 |
| | | Bachelor of Arts in Sociology (BASO) | Dr. Straton Ruhinda | 0754 030242 |
| | | NTA Level 4,5and 6 (Certificate and Diploma in Social Work) | Dr. Fauzia Mohamed | 0782 374953 |
| 3. | Linguistic and Literacy Studies | Linguistic courses | Mr. Moshi Masatu | 0687885849 |
| | | Literature courses | Ms. Caroline | 0656223661 |
| | | Kiswahili | Mr. Emmanuel Msangi | 0767519226 |
| 4. | Geography, Tourism and Hospitality Services | Bachelor of Tourism Management | Dr. Veronica Nyerere | 0689 868027 |
| | | Non-degree Programme Tourism | Dr. Theresa Mugobi | 0757 160110 |
| | | Bachelor of Natural Resources Management | Dr. Ruth John and Habiba Ally | 0756650132 |
| | | Bachelor Population and Development | Dr. Anna Wawa | 0754 430075 |
| 5. | MCED | M.Sc. Economics | Mr. Abdul Kilima | 0788513483 |
| | | M&E | Ms. Janeth Gwimile | 0785395454 |
| | | | Mr. Henry Tumaini | 0762411034 |
| | | | Mr. Abdul Kilima | 0788513483 |
| | | B.A - Economics | Mr. Godfrey Gradius | 0754067357 |
| | | Diploma in M&E | Ms. Zakia Ituja | 0716959300 |
| | | Certificate in M&E | Ms. Zakia Ituja | 0716959300 |
| | | BCED | Mr. Fidelis Kisusi | 0713910438 |
| 6. | Political Science, Public Administration, History and Philosophy (PSPAHP) | BAPA BAIR | Ahmed Mussa Revocatus Bin'Omukama | 0714060617 0754204500 |

PART TWO

Undergraduate and Non-degree Programmes

Who's Eligible for Direct Enrolment in FASS Programmes?

Those who have the following qualifications then are a suitable candidate to undertake our various undergraduate degree programmes:

- Two principal passes Advanced Certificate of Secondary Education Examination (A.C.S.E.E.).
- Diploma holder with 3.0 GPA. The diploma must be of the duration of two years period.
- Applicant who hold a one year Foundation course from the Open University of Tanzania

How Should a Student Approach the Programme as a Whole?

You need to get to know as much as you can about your programme. You can find out through your Directors of Regional Centre (DRCs), FASS website, your course outlines, or your instructors how your programme works. Do you need a certain grade to proceed to the following year? Does your choice of courses fit in to what you might want to do later in the programme? When are the exams and how do they work? Being familiar with your programme from the beginning will save you time and worries later.

What about Exams?

Finding out the examination format, assessment criteria and when and where examinations take place might not be the first things you want to look into when you have just joined and are excited about learning more about your subjects in the first place. But it can be helpful to bear this information in mind. Have a look at past exam papers, which are in the hands of preceding students to get an idea of what will be expected of you. Inquiring about previous examination reports can be even more revealing, as they will tell you exactly what students did well and what went wrong in the past. To register online for examinations, you have to visit the OUT webpage at: www.out.ac.tz. The examination regulations apply from the first Level to the final Level of the undergraduate examinations in the Faculty. Further examination regulation details are available online in the OUT Prospectus which can be accessed at:

<http://www.out.ac.tz/files/importInfo/prospectus%2019-2020.pdf>.

Which Code Stands for what, and How do I Choose Subjects?

Each subject starts with an "O" which stands for The Open University of Tanzania. It is followed by the subject alphabet and code numbers. The code numbers used will be in the series of 100 for Part One, 200 for Part Two and 300 for Part Three.

Following are the subject codes:

| | | |
|-----|---|---|
| CED | - | Community Economic Development |
| ODS | - | Development Studies |
| OEK | - | Economics |
| OGE | - | Geography |
| OPD | - | Human Population and Development |
| OIR | - | International Relations |
| OLL | - | English Language and linguistics |
| ORM | - | Natural Resource Assessment and Management |
| OHI | - | History |
| OLL | - | English Language and Linguistics |
| OLT | - | Literature |
| OLM | - | Library and Information Management |
| OPR | - | Philosophy and Religious studies |
| OSW | - | Kiswahili |
| OPA | - | Public Administration |
| OPS | - | Political Science and Public Administration |
| OTS | - | Tourism Studies |
| OTM | - | Tourism Management |

| | | |
|------|---|-----------------------------------|
| OSP | - | Social Work Studies |
| OSS | - | Sociology and Social Work Studies |
| OSPS | - | Social Psychology |
| OJO | - | Journalism |
| OMC | - | Mass Communication |
| FRA | - | French |

The choice of course combination for The Open University of Tanzania Degree programme shall be approved by designated officers of the University. Note that any change in any subject combination will be made only in consultation with the designated officers of The Open University of Tanzania. Such changes will only be allowed before or during the first face to face session of the course and in exceptional cases only in order to qualify for the award of a degree, a student is normally required to complete a minimum of 36 to 40 course units, depending on specific programme requirements. Further details about our programmes are also available in the OUT Prospectus at: <http://www.out.ac.tz/files/importInfo/prospectus%2018-2019.pdf>.

Bachelor Degree Programmes

At undergraduate level, FASS currently offers 17 programmes through Open and Distance Learning (ODL) mode of delivery. These include:

- Bachelor of Arts in Tourism Management
- Bachelor of Arts in Sociology
- Bachelor of Social Work
- Bachelor of Arts in Journalism
- Bachelor of Arts in Mass Communication
- Bachelor of Community Economic Development
- Bachelor of Arts in Economics
- Bachelor of Arts in Natural Resource Management
- Bachelor of Arts in Population and Development
- Bachelor of Arts in Literature
- Bachelor of Arts in Kiswahili and Creative Studies
- Bachelor of Arts in English Language and Linguistics
- Bachelor of Library Information Management
- Bachelor of Arts in History and Cultural Heritage
- Bachelor of Arts in Public Administration
- Bachelor of Arts in International Relations

Reading Materials and Library Services

Studying for the degree requires students to engage with a mixture of printed and electronic resources. Some of these may be originally printed materials, now available to in electronic format – for example, downloads of journal articles or books. However, the degree is not simply e-learning in the sense that all the learning and activities take place as you sit at your computer. You will also be expected to visit libraries to research topics, and to obtain books, either through the university library or through purchasing your own copy of key texts. In view of the foregoing, the OUT Library offers state of art technology, vast collection of research and reading materials and the specialized services. The main Library lies at the heart of the OUT Headquarter, while mini libraries are set in locations convenient to the staff and students in the Regional Centres. The Library houses more than 200,000 printed volumes, while their virtual presence consisting of bibliographic and full text databases, online theses/ dissertations, e-books, open courseware, e-journals and growing institutional digital repository make it a gateway to a wealth of research and learning materials. It also makes available online catalogue of books available in the main library and in the regional canter. For more essential information about the library hours and services, and access to the library resources, both on and off-campus, visit the OUT Library website at: www.out.ac.tz/library/.

Online Teaching and Interactions

We are progressively making use of a Virtual Learning Environment (VLE) called MOODLE (Modular Object-Oriented Dynamic Learning Environment). To access MOODLE platform you will need to log into the relevant portal with your username and password. MOODLE is used for several purposes, for example downloading the relevant documents that you will need as you study, and keeping up with advancement in information and communication technology. You will also be able to use it to contact other distance learners through the student forum. The instructors will be developing and updating the MOODLE resources as an on-going part of the

programme development. Zoom lectures are currently delivered for each knowledge area. Students are encouraged to attend online lecture sessions. Links for scheduled zoom lectures will be provided in the MOODLE platform.

Department of Economics and Community Development (ECED)

ECED is comprised of two departments namely Economics and Community Economic Development. The Economics department currently offers a BA general degree while the Community Economic Development offers courses in development studies. Starting this academic year, CECED is offering two new undergraduate programs namely BA Economics (BA ECON) and Bachelor of Community Economic Development (BCED). The details of the programme are as given below:

Bachelor of Arts in Economics (BA Econ)

The main objective of the BA ECON programme is to enable students demonstrate develop the ability to critically evaluate and apply theories and techniques of economics.

BA Econ Programme Structure

A student is required to complete **36units** in order to qualify for a BA in Economics.

Level I

| Code | Course Title |
|--------------------|---|
| OEC 130 | History of Economic Thought |
| OEC 131 | Introduction to Microeconomics |
| OEC 132 | Introduction to Macroeconomics |
| OEC 133 | Basic mathematics and statistics for Economists |
| OEC 134 | Social science Research methods |
| OFC 017 | Communication Skills |
| OCP 100 | Introduction to Computers |
| TOTAL UNITS | |

Level II

| Code | Course Title |
|--------------------|-------------------------------------|
| OEC 230 | Intermediate Microeconomics |
| OEC 231 | Intermediate Macroeconomics |
| OEC 232 | Development Economics |
| OEC 233 | Quantitative methods for Economists |
| OEC 234 | Econometrics |
| OEC 235 | Corporate Finance and Investments |
| TOTAL UNITS | |

Level III

| Code | Course Title |
|--------------------|-------------------------|
| OEC 330 | Monetary Economics |
| OEC 331 | International Economics |
| OEC 332 | Public Economics |
| OEC 333 | Industrial Economics |
| OEC 334 | Labour Economics |
| OEC 335 | Agricultural Economics |
| TOTAL UNITS | |

NOTE: Students must select at least ONE (1) elective course in level III so as to complete total units required to graduate.

Diploma in Monitoring & Evaluation

The main objective of the Diploma in M&E programme is to provide skills for understanding M&E systems, effective leading and management of evaluation teams in conducting data collection fieldwork

Semester I Modules

Semester II Modules

| S/N | Module code | Module Title | Class | Credits |
|----------------------|-------------|------------------------------------|-------|------------|
| 1 | OEC 021 | Impact Evaluation Methods | C | 20 |
| 2 | OEC 022 | Field Protocol and report writing | C | 20 |
| 3 | OEC 023 | M&E in Public sector | C | 20 |
| 4 | OEC 024 | Evaluation Criteria and Techniques | C | 20 |
| 5 | OEC 025 | Value for Money in M&E | C | 20 |
| 6 | OEC 026 | M&E Data Management and Systems | C | 20 |
| 7 | OEC 199 | Field Practical Attachment | C | 40 |
| Total Credits | | | | 160 |
| 4 | OFP 020 | Computer Skills | C | 20 |
| 5 | OEC 014 | Applied Mathematics for Project | C | 20 |
| Total Credits | | | | 100 |

Key:
F=Fundamental
C= Core

Development Studies

Development Studies courses are taken by all University students as optional courses. Students can take either's 202A Society, Technology and Environment (for Humanities Bias Group) or ODS 202B Environment, Technology and Development (for Science bias Group). Students in the Faculty of Arts and Social Sciences; Faculty of Education and Faculty of Law comprise the Humanities Bias group while those in the Faculty of Science, Technology and Environmental Studies constitute the Science bias group. The course structure is as indicated below

| Level One | |
|--------------------|--|
| <i>Course Code</i> | <i>Course Title</i> |
| ODS 101 A: | Concepts/Theories of Social Development |
| ODS 101 B: | Political Economy |
| ODS 101 C: | Political and Social Development in Africa |
| ODS 102 A:* | Issues in Development |
| ODS 102 B:* | Social Services and Development |
| OFC 017: | Communication Skills |
| OCP 100: | Introduction to Computer |
| Level Two | |
| <i>Course Code</i> | <i>Course Title</i> |
| ODS 201 A:* | Tanzania's Development Experience |
| ODS 201 B:* | Alternative Development strategies |
| ODS 202 A:* | Society, Technology and Environment (For Humanities only) |
| ODS 202 B: | Environment, Technology and Development (For Natural Sciences and Technology) |

* Courses not offered in this academic year.

Bachelor of Community Economic Development (BCED)

Community Economic Development (CED) is a participatory process by which communities initiate and generate their own solutions to economic problems leading to positive concrete changes in communities through: creating employment; stabilizing local economies; reducing poverty; contributing to the health of the natural environment; building local resources and capacities; and increasing community control. CED is understood in its widest sense as an emerging, diverse field of practice accompanied by analysis of the social-economic context. The BCED programme seeks to provide a unique opportunity to students who wish to develop their career in CED

Objectives of the Programme

The main objectives of the Bachelor of Community Economic Development are to:

- train Community Economic Development practitioners to work in the government, private sector and with communities;
- generate knowledge and information that will permit leaders in government, private sector and in communities to make informed decisions;
- encourage a high degree of local participation in making well informed economic choices;
- assist in building sustainable institutions that will assure equitable sharing of the benefits of those choices;
- build capacity among practitioners working with communities.
- equip students with sufficient knowledge, skills and attitude that will enable them to work competently as economists in the government, international organizations, financial sector, business sector, etc.

Entry Qualifications

Candidates for BCED will be admitted on the basis of the Open University Tanzania's rules and regulations which govern the admission process.

Duration

The course shall be completed at least within three years in all modes. However, a student can extend to a maximum of up to eight years for a distance mode.

Assessment Regulations

Students are assessed by a combination of timed test and final examination. The timed test comprises of 30% while the final examination carries 70% making a total of 100%. The formal examinations and timed test allow sufficient assessment and feedback to maintain intellectual rigour and provide opportunity for individual improvement.

Structure

The programme structure has three levels. Each level is equivalent to two academic years, assuming an average learner. Details of the courses in each level are provided in the table below:

| Code | Title of the Course |
|---------|---|
| CED 101 | Principles of CED |
| CED 102 | Economics for CED |
| OAF111 | Principles of Accounting |
| OEC 133 | Mathematics and Statistics for Economists |
| CED 103 | SMEs and Development |
| OCP 100 | Introduction to Computers |
| | |
| CED 201 | Microfinance Management |
| CED 202 | Resource Mobilization and Management for CED Projects |
| CED 203 | Poverty Analysis and Intervention |
| CED 204 | CED Project Management |
| CED 205 | Organizational Management for CED |
| OME 312 | Entrepreneurship and Business Planning |
| | |
| CED 301 | Project Monitoring and Evaluation |
| CED 302 | Community Needs Assessment |
| CED 303 | Sustainable Responses to Environmental problems |
| CED 304 | Development as a tool for Conflict Resolution * |
| OEC 305 | Development Economics* |
| CED 305 | Rural Livelihoods and Sustainable Development* |
| CED 306 | Gender Issues in CED* |

*Candidate to select at least TWO of these courses

Award

Upon completion and passing of all the courses, Community Needs Assessment (CNA) and field practical, a student will be awarded a Bachelor of Community Economic Development degree of the Open University of Tanzania.

Programme Delivery

The programme will be delivered in Open Distance Learning Mode (ODL) as well as face-to-face evening mode. Academic year starts in September/October by an orientation week. During orientation, students will be provided with course outlines, study manuals and other guiding materials.

Department of Linguistics and Literary Studies

The Department of Linguistics and Literary Studies deals exclusively with language-oriented courses. To accomplish this purpose, the department has the following bachelor programs: Bachelor of English Language and Linguistics (BA ELL), Bachelor of Kiswahili and Creative Studies (BA KISW) and Bachelor of Arts in Literature (BALIT).

Bachelor of Arts in English Language and Linguistics (BA ELL)

This programme aims to introduce students to the nature, structure, and uses of language and; **develop an understanding of descriptive and applied linguistic knowledge.** Candidates are required to take at least **36 units.**

Programme Organization

LEVEL I The candidate shall take all core courses and one elective, making a total of 12 units

| | Course name |
|----------|---|
| OLL 131 | Introduction to Language and Linguistics |
| OLL 132 | English Structure |
| OLL 133* | Introduction to Functional Grammar |
| OLL 134 | Language in Contact |
| OLL 135 | Language Acquisition Theories |
| OLL 136 | History and Development of English Language |
| OFC 017 | Communication Skills |
| OCP 100 | Introduction to Computer |

LEVEL II The candidate shall take all core courses and one elective, making a total of 12 units

| Course code | Course name |
|--------------------|--|
| OLL 231 | Discourse Analysis |
| OLL 232 | Morphology |
| OLL 233 | Introduction to Syntax |
| OLL 234 | Historical and Comparative Linguistics |
| OLL 235 | Phonetics and Phonology |
| OLL 236 | Applied Linguistics |
| OLL 237 | Translation Theory and Practice |
| OLL 238 | Lexicography |

LEVEL II The candidate shall take all core courses and one elective, making a total of 12 units

| Course code | Course name |
|--------------------|--|
| OLL 231 | Discourse Analysis |
| OLL 232 | Morphology |
| OLL 233 | Introduction to Syntax |
| OLL 234 | Historical and Comparative Linguistics |
| OLL 235 | Phonetics and Phonology |
| OLL 236 | Applied Linguistics |
| OLL 237 | Translation Theory and Practice |
| OLL 238 | Lexicography |

Bachelor of Arts in Kiswahili and Creative Studies (BA KISW)

The Kiswahili and Creative Studies programme is divided into THREE levels: 100 series, 200 series and 300 series. At level 100 series the courses acquaint students with both the background and other major linguistics and literary theories and the application of these theories in critically analyzing Kiswahili language and literary works. The two remaining Levels (200 -300 series) of the programme provide instruction on a more advanced level in a broad range of core subjects and therefore enable a student to choose from a range of optional courses which might form the basis of specialization in their future career and studies. The programme is concluded by testing students' research skills. Those who scored B+ in research methodology (OSW 225) will be given an opportunity to demonstrate their acquaintance in research methods and methodology by registering OSW 336 Research Project in Kiswahili. All candidates are required to take at least 36 OUT units which is equivalent to 360 TCU credits, each unit covering content materials equivalent to thirty-five one hour lecture materials.

Programme Organization

LEVEL I: The candidate shall take all core courses, making a total of 10 units

| Course Codes | Course Name |
|--------------|--|
| OSW131 | Introduction to language and linguistics |
| OSW I32 | History of Kiswahili and Dialect |
| OSW133 | Kiswahili Literature: Theories and Criticism |
| OSW134 | Theory and Practice of Translation |
| OCP 100 | Introduction to Computer |
| OFC 017 | Communication Skills |

LEVEL II: The candidate shall take all core courses and one elective making 14 units

| Course Codes | Course Name |
|--------------|--------------------------------------|
| OSW 231 | Kiswahili Grammar and Syntax |
| OSW 232 | Kiswahili Phonetics and Phonology |
| OSW 233 | Kiswahili Morphology |
| OSW 234 | Kiswahili Oral Literature |
| OSW 235 | Research Methods in Language Studies |
| OSW 236 | Kiswahili Semantics |
| OSW 237 | Creative Writing and Screen Writing |
| OSW 238 | Lexicography |
| OSW 239 | Comparative Literature 2 |

LEVEL III: The candidate shall take all core courses and 2 electives making a total of 12 units

| Course Codes | Course Name |
|--------------|----------------------------------|
| OSW331 | Kiswahili Novels |
| OSW332 | Kiswahili Drama |
| OSW333 | Kiswahili Poetry |
| OSW334 | Film Criticism |
| OSW335 | Sociolinguistics |
| OSW336 | Research Project in Kiswahili |
| OSW337 | Literary Stylistics in Kiswahili |

BA Education Programme

The department of Linguistics and Literary Studies will continue to teach language related core courses selected by BA ED not exceeding 16 units at all 3 levels.

Linguistics

Level 1

Students taking Linguistics as a major subject must study all linguistics courses from this level, whereas those who take the course as a minor subject should take OLL 121 and 123 only.

Level 2

B.A Education taking linguistics as a minor subject may take three core courses from the second year list one of which must be OLL 226/236. B.A Education students majoring in linguistics must take all core courses in the second year list one of which must be OLL 226/236.

Level 3

ALL B.A Education majors in linguistics must take ALL core courses in the third year. However, the project will be done by students whose performance was above a 'B' grade in the second year. Those who did not attain an average of 'B' in the second year will have to choose two units from any elective course in the third-year list.

| Course Codes | Course Title |
|----------------|---|
| OLT 121 | Literary Theory and Criticism |
| OLT 122 | Studies In African Literatures |
| OFC 017 | Communication Skills |
| OCP 100 | Introduction to Computer |
| Level 2 | |
| OLT 221 | Oral Literature I |
| OLT 222 | Literary Stylistics |
| Level 3 | |
| OLT 321 | European Literature |
| OLT 322 | African American Literature |
| OLT 323 | Creative Writing |
| OLT 324 | Dramatic – Theatrical Studies |
| OLT 325 | Oral Literature II (Research project on literature) |

Kiswahili

1. *B. A. General* Students studying Kiswahili as a major subject will be required to study all the first-year units, and six units in the second year and four units in the third year of study.
2. *B. A. General* Students taking Kiswahili as a minor subject will be required to take all units in the first-year units, 6 units in the second year and 4 units in the third year.
3. *B. A. with Education* Students taking Kiswahili as a major subject will be required to study 4 core units in the first year, six in the second year and six in the third year.
4. *B. A. with Education* Students taking Kiswahili as a minor subject will have to take all core units, 4 in the first year, 2 in the second year and 2 in the third year.

Kiswahili

1. *B. A. General* Students studying Kiswahili as a major subject will be required to study all the first-year units, and six units in the second year and four units in the third year of study.
2. *B. A. General* Students taking Kiswahili as a minor subject will be required to take all units in the first-year units, 6 units in the second year and 4 units in the third year.
3. *B. A. with Education* Students taking Kiswahili as a major subject will be required to study 4 core units in the first year, six in the second year and six in the third year.
4. *B. A. with Education* Students taking Kiswahili as a minor subject will have to take all core units, 4 in the first year, 2 in the second year and 2 in the third year.

Level 1

| Course Codes | Course Title |
|---------------------|---|
| OSW 121 | Utangulizi wa Lugha na Isimu |
| OSW 122 | Historia ya Kiswahili na Lahaja zake |
| OSW 123 | Fasihi ya Kiswahili Nadharia na Uhakiki |
| OFC 017 | Comunicación Skills |
| OCP 100 | Introduction to Computer |
| Level 2 | |
| Course Codes | |
| OSW 221 | Sarufi ya Kiswahili na Sintaksia |
| OSW 222 | Fonetiki na Fonolojia ya Kiswahili |
| OSW 223 | Mofolojia ya Kiswahili |
| OSW 224 | Fasihi Simulizi |
| OSW 225* | Isimu Tumizi |

| | |
|---------------------|--------------------------------------|
| OSW 226 | Ushairi wa Kiswahili |
| OSW 227 | Riwaya ya Kiswahili |
| OSW 228 | Tamthiliya ya Kiswahili |
| Level 3 | |
| Course Codes | |
| OSW 321 | Isimu Jamii |
| OSW 322 | Kunga za Tafsiri na Semantikia |
| OSW 323 | Ubunifu |
| OSW 324 | Projekti ya Utafiti katika Kiswahili |

** Courses not offered in this academic year.*

Department of Geography, Tourism and Hospitality Services

The Department of Geography has 3 main undergraduate programmes: Bachelor of Arts in Natural Resource Management BA (NRM); Bachelor of Arts in Population and Development BA (PD) and Bachelor of Arts in Tourism Management. They are paralleled by old programmes which are offered by the Department in collaboration with education programs

Bachelor of Arts in Natural Resources Management (BA NRM)

The Bachelor of Arts in Natural Resources Management (BA.NRM) use and development of resources; coupled with practical field experience, knowledge and skills necessary for meeting challenges of sustainable use of natural resources. At the end of the programme, learners will be expected to have acquired competences in poverty analysis and social development planning. Ultimately the programme will produce competent professionals who can identify, plan and monitor the exploitation of natural resources.

Programme Structure

It consists of 14 core courses and 4 electives. Each course (core and elective) is 2 units. There are 2 compulsory cross cutting courses on offer (computer and communication skills) each with a 1-unit weight. A student is required to complete 36 units in order to qualify for a BA in Natural Resources Management degree. This shall be made of all core courses in each level whereby at each level a student shall be required to accomplish a minimum of 12 units. For example, in level 1 a student will be required to undertake all 12 units from the core courses plus 2 units from the compulsory courses as indicated in this Handbook. In level 2 students shall be required to accomplish all 5 core courses which make up 10 units and select a minimum of one course from the elective courses. In level 3 students shall be required to do all 6 core courses which make 12 units

Level 1 (All Courses)

| Course Codes | Course Title |
|--------------|---|
| ORM 101 | Background to Natural Resources |
| ORM 102 | Introduction to Population, Resources and Environment |
| ORM 103 | Introduction to Geographic Techniques |
| ORM 104 | Climatology |

| | |
|---------|--|
| ORM 105 | Introduction to Human Geography |
| ORM 106 | Gender and Natural Resource Management |
| OFC 017 | Communication Skills* |
| OCP 100 | Introduction to Computer* |
| | Total |

* 2 compulsory courses @ 1 unit = 2 units included

Level 2 (Five Core And One Elective)

| Course Codes | Course Title |
|--------------|--|
| ORM 201 | Minerals and Energy Resources |
| ORM 202 | Remote Sensing and Geographic Information System |
| ORM 203 | Social Research Methods in Geography |
| ORM 204 | Field Practical |
| ORM 205 | Environmental hazards and natural disaster management* |
| ORM 206 | Population and Poverty Studies* |
| ORM 207 | Urban Planning and Management* |
| ORM 208 | Principle of Ecology |

Elective courses

Level 3 (All courses)

| Course Codes | Course Title |
|--------------|--|
| ORM 301 | Environmental Economics |
| ORM 302 | Policy Issues in Natural Resources |
| ORM 303 | Environmental Impact Assessment |
| ORM 304 | Climate Variability and Environmental Resources Management |
| ORM 305 | Biodiversity Monitoring Conservation and Management |
| ORM 306 | Land Evaluation and Land Use Planning |
| | Total |

Bachelor of Arts in Population and Development (BAPD)

The Bachelor of Arts in Population and Development aims at equipping graduate students with demographic, Social, economic and geographic analytical tools and their applications in resource in planning and use for sustainable development. At the end of the programme, learners will be expected to have acquired competences in determining the relationship between population and other broad parameters, such as internal and international immigration, poverty, environment and global warning which are essential for development planning. The programme is designed to produce competent professionals in demography, population and development planning.

Programme Structure

BA (PD) consists of 16 core courses and 4 electives. Each course (core and elective) has a 2 units' weight. In addition, there are 2 compulsory cross cutting courses on offer (computer and communication skills) each with a 1-unit weight.

This shall be made of all core courses in each level whereby at each level a student shall be required to accomplish a minimum of 12 units. For example in level 1 and level 2, students will be required to undertake all courses as indicated in this Handbook. In level 3 students shall be required to accomplish all the 7 core courses which make 14 units and select a minimum of 2 elective courses.

Programme Organization

Level 1 (All Courses)

| Course Codes | Course Title |
|--------------|---|
| OPD 101 | Introduction to Population Studies |
| OPD 102 | Introduction to Family Life Education |
| OPD 103 | Introduction to Reproductive Health and Sexual Health |
| OPD 104 | Medical Geography |
| OCP 100 | Introduction to Computer |
| OFC 017 | Communication Skills |

| | |
|--|---------------------|
| | One elective course |
| | Total |

Level 2 (All Courses)

| Course Code | Course Title |
|--------------------|----------------------------------|
| OPD 201 | Dynamics of Population Structure |
| OPD 202 | Gender and Development |
| OPD 203 | Basic Demographic Methods |
| OEC 124 | Social Science Research Method |
| OPD 209 | Field Practical |
| | |
| | Total |

Level 3 (Seven Core Courses and at Least One Elective)

| Course Code | Course Title |
|--------------------|--|
| OPD 301 | Gender, Health and Family Planning |
| OPD 302 | GIS and Population Studies |
| OPD 303 | Population, Policy and Development |
| OPD 304 | Population, Migration and Development |
| OPD 305 | Family Resources Management |
| OPD 306 | Urban Systems, Planning and Management* |
| OPD 307 | Population, Environment and Development |
| OPD 308 | Nutrition for Health* |
| OPD 309 | African Environment and Development* |
| OPD 310 | Rural Settlement and Development |
| ODS 101A | Concepts and Theories of Social Development* |
| | Total |

- **Elective courses**

OGE 229: Geography Field Practical's

There are two Geography Field Practical's (GFP I and GFP II) to be done by all second and third year students taking Geography. The 2 GFPs will carry 2 units. The aim of conducting Field Practical's is to enable student to match and concretize theory and application of geographical knowledge in the Field. Geography Field Practical's are deliberately decentralized into geographical zones. It is intended to bring the Practical's closer to students in their own physical environments so as to know more about it as a potential for community development; and to minimize GFP running costs.

All 2nd year Geography students have to undertake a 14 day supervised Geography Field Practical in their respective Geographical Zones/ regions. GFPI & GFPII will be conducted successively within the 14 days provided. Thereafter, students have to write a Group Work Report for GFPI and write a comprehensive report for GFPII to be submitted three months later after completion of GFPI. Students have to incur subsistence, travel; and stationery costs during Geography Fieldwork apart from paying Tsh 200,000 to the OUT. This amount of money can be solicited by the student from different sources including applying to the Universities Student Loan Board. No student will be allowed to carry out GFPII before completion of GFPI first. The Final Grade is the average between scores obtained after marking GFP I and GFP II out of 100%

Bachelor of Arts in Tourism Management (BTM)

The Bachelor of Arts in Tourism Management (BTM) is a revised programme of the old BA Tourism studies. It prepares competent graduates for career in the tourism and travel industries. It has been designed to give students a solid foundation to both disciplines in order to prepare them for leadership in tourism sector. Increasingly, employers prefer university graduates with analytical as well as practical skills for management positions. This programme is aimed at producing informed and knowledgeable graduates with a critical awareness of tourism as one of the most powerful forces in the globalized world of today. They should be in a position to demonstrate a theoretically based and practically sound level of competence for employment as tourism officers, tourism

marketers, analysts, tourism planners, travel agents, managers, researchers, educators, policy-makers, and tourism entrepreneurs.

Programme Organization

The following are subjects offered for Bachelor of Arts Tourism Management (BTM):

LEVEL ONE

| Course Codes | Course Title | Status of the course |
|--------------|---|---|
| OTM 101 | Introduction to Tourism | Core |
| OTM 102 | Introduction to Wildlife Ecology | Core |
| OTM 103 | Integrated Hospitality Operations | Core |
| OTM 104 | Special Interest Tourism | Elective |
| OTM 105 | Leisure and Recreation Tourism | Core |
| OTM 106 | Customer Care concepts and practices in Tourism | New this academic year (2022/2023). For old students, it is OME 313 |
| OFC 017 | Communication Skills | Core |
| FRA 1 | French for Beginners | Elective |
| OJO 228 | Public Relations | Elective |
| ORM 101 | Background to Natural Resources | Elective |

LEVEL TWO

| Course Codes | Course Title | |
|--------------|--|----------|
| OTM 201 | Cultural and Heritage Tourism | Core |
| OTM 202 | Tourism Economics | Core |
| OTM 203 | Tourism Policy & Planning | Core |
| OTM 204 | Tourism Marketing and Promotion | Core |
| OTM 205 | Sustainable Tourism Development | Core |
| OCP 100 | Introduction to Computer | Core |
| OEC 134 | Social Sciences Research Methods | Core |
| FRA 2 | Intermediate French | Elective |
| OLS 203 | Collection Developments and Management | |

LEVEL THREE

| Course Codes | Course Title | |
|--------------|---|------|
| OTM 301 | Event and Festival Planning Development | Core |
| OTM 302 | Travel and Tour Operations Management | Core |
| OTM 303 | Tourism Entrepreneurship | Core |
| OTM 305A | Tourism field Study (May each year) | Core |
| OTM 305 B | Tourism Internship -4weeks (April-August each year) | Core |
| OTM 305 C | Special Project (Dissertation) | Core |

1. OTM 305 A- Tourism Field Study

Tourism field study will be done by all second years' students (after completion of 200 series course). This is a compulsory field study to all BTM students. The University will cover organization costs and any other charges as stipulated in cost sharing policy of University. Students must pay course fee as per university regulation and cover their travel expenses (the cost of living and other costs as will be communicated by the department. This is usually a one week education trip to tourism and hospitality establishments and there is no alternative to this. OTM 305 A is a compulsory course, so all students, whom fail to attend will not attain BATM. It is usually conducted in May or June. Registration for the field trip is usually in January. For those who register for a trip and fail to attend, they will have to pay again when next in offer.

2. OTM 305 B- Tourism Internship

Tourism students are advised to attach themselves in one of the tourist service providers such as national parks, hotels, travel and tour companies, Museum etc. It is not allowed to intern in your working office. The registration for internship is always in January. The internship is for FOUR weeks. Students are advice do their internship between April and August Each Year.

3. OTM 305 C-Tourism Research Project (Dissertation)

Students are advised to propose a title of their interest and email them to the Tourism Department. Thereafter, the department will review the title and give you feedback as either accepted/ accepted with few amendments/rejected and required to re-send. This is done in January each year. The end of submitting a complete research project is AUGUST each year.

Department of Political Science, Public Administration, History and Philosophy

This department has three undergraduate programmes, namely Bachelor of Arts in History, Bachelor of Arts in Public Administration (BAPA) and Bachelor of Arts in International Relations (BAIR).

Bachelor of Arts in History (BA HIST)

All BA History students must take all CORE courses.

Level 1

| Code | Titles |
|----------|---|
| OHI 131 | Introduction to African History |
| OHI 132 | History of Tanzania |
| OHI 133 | Theory and Practice in Africa History |
| OHI 134 | The Political History of Zanzibar |
| OHI 135 | Themes in African Prehistory |
| OHI 136 | Development of Political Philosophy |
| OPR 121 | Introduction to Critical Thinking and Argumentation |
| OFC 017: | Communication Skills |
| OCP 100: | Introduction to Computer |

Level 2

| Course Codes | Course Title |
|--------------|---|
| OHI 231 | History of East Africa |
| OHI 232 | History West Africa |
| OHI 233 | Europe since the 19 th Century |
| OHI 234*: | Globalization and African History |
| OHI 235 | History of South Africa to Recent Past |
| OHI 236 | History of USA |
| OHI 237 | Development of Political Philosophy |
| OPR 222 | History and Development of African Philosophy |

**Not on offer in this academic year.*

Level 3

| Course Codes | Course Title |
|--------------|---|
| OHI 331 | Africa and the Black Diaspora |
| OHI 332 | History of Central Africa |
| OHI 333 | History of North Africa |
| OHI 335*: | The History of Africa and World Religions |
| OHI 336*: | Dissertation |

**Not on offer in this academic year.*

Bachelor of Arts in Public Administration (BAPA)

Rationale

The programme has been introduced to cater for required competencies and skills to manage both government and private affairs at government and personal levels. The cadre that will go through the programme is expected to occupy various positions of administrative nature as supervisory and middle level managers, either as administrators, personnel officers, human resources officers and several others. This cadre is needed to strengthen the capacity of the government at local and central levels to deliver services to its clients for effective and efficient operations of those offices. The fact that the government structure and systems are undergoing remarkable changes requires employees who have been well nurtured and groomed to acquire those attributes of dynamism, innovativeness, creativity and commitment towards the services in their country and in the region as a whole. The fact that Public Administration, which forms part of Political Science has not been well streamlined in the Political

Science and Public Administration stream, not only in our University but also in other old universities where Public administration is taught as part of political science programme. As such under this programme Public Administration as a discipline and a profession will be more focused and thus enable the trainees to come out well versed with the methods and approaches in the management of governmental affairs

The specific objectives of this programme are to:

- i. Train students to acquire professional qualifications so that they can serve in different administrative and managerial positions in public and private sector organizations
- ii. Produce graduates who can fit well in the career of public administrators and able to make contribution to the dynamics of administration of public and private organizations;
- iii. Equip students with knowledge and skills to enable them to address the complex problems and pressures that surround public organizations and explore viable solutions within those organizations
- iv. Equip students with the requisite qualifications for enrolling into Masters programme in this University and others within the country and outside the country
- v. Equip students with competences and skills that will make them compete well in the labour market, within the country and in the region as a whole.

Assessment Strategy

All courses are examined during the academic year in which they are studied. The examinations consist of written Tests, demonstrations, Practical projects and written Annual examination at the end of each part based on percentage guides. Tests account for 30% while the written Final examination account for 70% of total marks. The pass mark for both continuous assessment and annual examination is 40%. A candidate who fails to attain the pass mark is allowed to write a supplementary examination. A candidate who fails in a supplementary examination will be required to repeat the course. Repeating a course means doing the Test and Annual examination.

Programme structure

It should be born in mind that the Bachelor of Arts in Public Administration is being introduced to the university for the first time. It covers some theoretical and practical knowledge for that will enable students become better performers of the public service. The programme is detailed here under:

| Course Codes | Course Title |
|----------------|--|
| Level 1 | |
| OFC 017 | Communication and Study Skills |
| OCP 100 | Introduction to Microcomputer studies and information Technology |
| OPS 122 | Government and Politics in Africa |
| OEC 134 | Social Science Research Methods |
| OPA 101 | Introduction to Public Administration |
| OPA 102 | Organization Theory and Public Bureaucracies |
| OPA 103 | Local Government Administration in Tanzania |
| OIR 101 | Introduction to the Study of Politics |
| OIR 102 | Political Thought |
| Level 2 | |
| OPA 201 | Administrative Law |
| OPA 202 | Decision Making and Public Policy Analysis |
| OPA 203 | Management of Human Resources |
| OPA 204 | Organization Behavior |
| OIA 200 | Field Work/Industrial Attachment |
| OIR 201 | Theories and Issues in International Relations |
| Level 3 | |
| OPA 301 | Budgeting and Financial Control in the Public Sector |
| OPA 302 | Leadership and Governance |
| OPA 303 | Industrial Relations |
| OPA 304 | Strategic Management |
| OPA 305 | Comparative Public Administration |
| OPS 320 | Democracy and Human Rights |
| OIR 302 | Contemporary Issues in Global Politics |

Field Practice:

The students have to undertake a compulsory field attachment for six to eight weeks, during which students shall be exposed to the real world of work. During this period student shall be able to merge theory with practice.

Bachelor of Arts in International Relations (BAIR)

Rationale

A complex pattern of interactions and cross-border transactions in the contemporary international system point to a need to develop training curricula that will cater for current and future needs of University students to build their capacities to cope with and address the challenges associated with a broadly extended international issues. For example the dramatic change in the modus operandi of the transnational corporations brings about a problem of maneuvering the harmonized rules and principles of equity shares of the gains and losses between partner-states. The Bachelor of Arts in International Relations degree programme is designed to equip students with modern skills and competencies, and to prepare them to become responsible international citizens who can act firmly and aggressively in the international arena. The programme is designed to produce qualified and practically competent practitioners in the area of International Relations and Diplomacy who can match theory and practice and demonstrate an impact in the management of foreign affairs. The Bachelor of Arts in International Relations programme is designed to provide students with a combination of theoretical and practical knowledge and with ability to apply the same in the various capacities and levels. Graduates from the programme are expected to have:

- ✓ Analytical capacity on international affairs
- ✓ A high level of communication skills
- ✓ The ability to identify and analyze problems and opportunities and collect pertinent data
- ✓ A sensitivity to controversies of cross-border nature
- ✓ An ability to act as change agents and manipulator of various foreign affairs

These characteristics will enable graduates of the programme accomplish the goals by working with and through people in political settings of both, national and international levels.

Student Profile

The programme targets local and international individuals who meet the OUT's minimum admission criteria, irrespective of age, gender, race, physical abilities and other individual situations. Offered through the Open and Distance Learning mode, student enrolment in the programme is unlimited.

Programme Structure

The programme is designed and implemented in 3 sequential levels: 100 Level (Level One) which is an introductory to key concepts and theories; 200 Level (Level Two) which imparts detailed knowledge, understanding and develops appropriate intellectual skills; and 300 Level (Level Three) which further enhances professional, practical and transferable key skills through research, field visits and internship and synthesis. The three levels can be completed in three years, but average learners can cover the same in not more than six years.

| Course Codes | Course Title |
|---------------------|--|
| Level | |
| OCP100 | Introduction to Computer |
| OFC 017 | Communication Skills |
| OIR 101 | Introduction to the Study of Politics |
| OIR 102 | Political Thought |
| OEC 134 | Social Science Research Methods |
| OIR 103 | Africa in the Global Context |
| OIR 104 | International Organizations |
| OPS 122 | Government and Politics in Africa |
| OPA 101 | Introduction to Public Administration |
| level 2 | |
| OIR 201 | Theories and Issues in International Relations |
| OIR 202 | International Political Economy |
| OIR 203 | Public International Law |
| OIA 200 | Field Work/Industrial Attachment |
| OPA 202 | Decision Making and Public Policy Analysis |
| FRA1 or FRA 2 | French for Beginners OR Intermediate French |
| Level 3 | |
| OIR 301 | Global Governance |
| OIR 302 | Contemporary Issues in Global Politics |

| | |
|---------|--|
| OIR 303 | Regional Integration |
| OIR 304 | The Political Economy of Conflict Resolution |
| OPS 320 | Democracy and Human Rights |
| OPA 302 | Leadership and Governance |

Department of Sociology and Social Work

Introduction

Until 2011/2012 The Department offered two sister programmes: Bachelor of Arts in Sociology and Bachelor of Arts in Social Work which were considered two in one degree programme whereby students graduated either as social workers or as sociologists. The degree programmes were designed in such a way that, in the first two years, all students took the same subjects. From third year, students selected either to opt for Social work studies or for Sociology studies, hence the difference in the output. From the academic year 2012/2013, following a review of the Social work component of the two in one degree, Bachelor of social work became a standalone degree. The Bachelor of Arts in Social Work Degree (BASW) had been phased out.

Bachelor of Arts in Sociology (BASO)

The Department of Sociology and Social Work has recently reviewed the Bachelor of Sociology programme which is expected to be submitted to TCU for accreditation soon. A stand-alone Bachelor of Arts in Sociology degree was approved by TCU and started to be offered in 2015/16. The programme has been designed focusing on specializations including Medical, Social Welfare Administration and Rural Sociology to suit the current social demand. This motivated the need to establish Master of Sociology which is highly in demand by the stakeholders.

Level I

| Course Code | Course Title |
|-------------|---|
| OSS 121 | Introduction to Sociology |
| OSS 122 | Introduction to Social Science Research Methods |
| OSS 123 | Classical Sociological Theory |
| OSS 124 | Introduction to social Psychology |
| OSS 125 | Critical thinking and argumentation |
| OCP 100 | Introduction to computer |
| OFC 017 | Communication skills |

NOTE: After successful completion of all core courses in level I above, a student will be allowed to choose a specialization from options A, B or C. However, while doing a specialization course of one's choice, in level II and III, students **MUST** also do compulsory courses in levels II and level III respectively. See table below on guide to units for BASO students.

Level II

| Course Code | Course Title |
|-------------|----------------------------------|
| OSS 221 | Contemporary Sociological Theory |
| OSS 222 | Social Science Research Methods |
| OSS 223 a | Field Practice I |

Level III

| Course Code | Course Title |
|-------------|-----------------------------------|
| OSS 321 | Sociology of knowledge |
| OSS 322 | Poverty, wealth and inequality |
| OSS 323 | Globalization and social problems |
| OSS 223 b | Field practice II |

NOTE: The three specialization courses A, B and C from which to choose from are as follows;

(A) Medical Sociology Specialization Courses

Level II

| Course Code | Course Title |
|-------------|-----------------------|
| OSS 224 | Cultural Anthropology |
| OSS 225 | Medical Sociology |

| | |
|---------|----------------------------|
| OSS 226 | Population and Development |
|---------|----------------------------|

Level III

| Course Code | Course Title |
|-------------|----------------------------------|
| OSS 325 | Health systems in Tanzania |
| OSS 326 | Reproductive health |
| OSS 327 | Stratification, Class and Health |

(B) Social Welfare and Administration Specialization Courses

Level II

| Course Code | Course Title |
|--------------|---------------------------------|
| OSS 227 | Introduction to Social Policies |
| OSS 228 | Community Development |
| OSS 229 | Social Welfare services |
| TOTAL | |

Level III

| Course Code | Course Title |
|-------------|--------------------------------|
| OSS 327 | Social policy analysis |
| OSS 328 | Gender and development |
| OSS 329 | Social planning and Evaluation |

(C) Rural Sociology Specialization Courses

Level II

| Course Code | Course Title |
|-------------|---------------------------------|
| OSS 231 | Introduction to rural sociology |
| OSS 232 | Sociology and rural development |
| OSS 233 | Peasant economy |

Level III

| Course Code | Course Title |
|-------------|---|
| OSS 331 | Rural cooperatives |
| OSS 332 | Agrarian social structure and social change |
| OSS 333 | Rural Urban contrast |

Guide to units for BASO students (New Programme)

| Level | OPTION A | OPTION B | OPTION C |
|--------------|----------------------------------|----------------------------------|----------------------------------|
| I | ALL (12) | ALL (12) | ALL (12) |
| II | Level II (5) + Option A II (6) | Level II (5) + Option B II (6) | Level II (5) + Option C II (6) |
| III | Level III (7) + Option A III (6) | Level III (7) + Option B III (6) | Level III (7) + Option C III (6) |
| TOTAL | 36 | 36 | 36 |

Bachelor of Social Work (BSW)

The Bachelor of Social Work (BSW) is a new social work professional degree. This degree began in the academic year 2012/2013. This option is only for Bachelor of Social Work entrants from the 2012/2013 academic year. Students taking social work option from the previous social work option will have to complete their courses according to the option above.

Level One

| Course Code | Course Title |
|-------------|---|
| OFC 017 | Communication Skills |
| OCP 100 | Introduction to Computer |
| OSS 102 | Introduction to Sociology and Anthropology |
| OSP 101 | Introduction to Social Work |
| OSP 102 | Social Work Professional Ethics |
| OSP 103 | Social Work Research Methods I |
| OSP 104 | Introduction to Psychology for Social Workers |

| | |
|--|--|
| | |
|--|--|

Level Two

| Course Code | Course Title |
|--------------------|---|
| OSP 201 | Human Behavior and the Social Environment |
| OSP 202 | Empowering Marginalized Populations |
| OSP 203 | Introduction to Social Welfare Policies |
| OSP 204 | Social Work Practice with Individuals, and Families |
| OSP 205 | Social Work Practice with Groups |
| OSP 206 | Social Work Practice with Organizations |
| OSP 207 | Social Work Practice with Communities |
| OSP 208 | Introduction to Field Practice |
| OSP 304 | Field Practice I (Block) |
| Total | |

Level Three

| Course Code | Course Title |
|--------------------|---|
| OSP 301 | Social Welfare Policy Analysis and Evaluation |
| OSP 302 | Social Work Research Methods II |
| OSP 303 | Social Work Research Project |
| OSP 304 | Field Practice II (Block) |
| Total | |

Non Degree Programme (Certificate and Diploma in Social Work)

As Tanzania undergoes social changes and growth both demographically and economically, it experiences increasing challenges of resources, marital conflicts, Gender Based Violence (GBV), Violence Against Children (VAC), HIV and AIDS, Child Marriage, Child labour and many others, hence the need for social work intervention. Basing on the same argument, developing Social Work Competence Based Training Curriculum was required to equip graduates from Social Work institutions with necessary knowledge and skills to address the challenges competently.

NTA LEVEL 4: Semester I

| Code | Module Title | Scheme Of Study Hrs/Wk | | | | |
|-------------|---|-------------------------------|----------|----------|-----------|---------------|
| | | L | T | P | AS | Credit |
| SWT04101 | Basics of Social Work | 3 | 2 | 2 | 2 | 14 |
| SWT04102 | Social Work Values and Ethics | 2 | 1 | - | 1 | 06 |
| SWT04103 | Information Communication Technology in Social Work | 2 | 1 | 2 | 2 | 10 |
| SWT04106 | Fundamentals of Sociology | 2 | 1 | - | 1 | 06 |
| SWT04109 | Psychology for Social Workers | 2 | 1 | 2 | 2 | 10 |
| SWT04110 | Social Welfare Services | 2 | 2 | 2 | 2 | 12 |
| | Sub -Total hours/Week | 13 | 8 | 8 | 10 | 58 |
| | Total hours/Week | 39 | | | | |

NTA LEVEL 4: Semester II

| Code | Module Title | Scheme Of Study Hrs/Wk |
|-------------|---------------------|-------------------------------|
|-------------|---------------------|-------------------------------|

| | | L | T | P | AS | Credit |
|----------|---|------------|----------|----------|-----------|---------------|
| SWT04204 | Social Work Practice in Health Care | 2 | 2 | 3 | 2 | 13 |
| SWT04205 | Social Psychology for Social Workers | 2 | 2 | 1 | 2 | 11 |
| SWT04207 | Human Rights and Gender in Social work Practice | 2 | 1 | - | 1 | 06 |
| SWT04208 | Fundamentals of Social Empowerment | 2 | 1 | 1 | 1 | 07 |
| SWT04211 | Basics of Social Work Field Instructions | 2 | 1 | - | 1 | 05 |
| SWT04212 | Block field Work | - | - | - | - | 25 |
| | Sub -Total hours/Week | 10 | 7 | 5 | 7 | 67 |
| | Total hours/Week | *29 | | | | |

NTA LEVEL 5: SEMESTER 1

| Code | Module Title | Scheme Of Study Hours/Week | | | | |
|-------------|-------------------------------------|-----------------------------------|----------|-----------|-----------|---------------|
| | | L | T | P | AS | Credit |
| SWT 05101 | Communication Skills | 2 | 1 | 2 | 2 | 10 |
| SWT 05102 | Guidance and Counseling | 3 | 1 | 3 | 2 | 14 |
| SWT 05103 | Social Welfare Policy and Services | 3 | 1 | 2 | 1 | 11 |
| SWT 05104 | Social Work Practice | 2 | 1 | 1 | 1 | 8 |
| SWT 05105 | Basic Statistics for Social Workers | 2 | - | 2 | 1 | 8 |
| SWT 05106 | Social Work Case Management | 3 | 1 | 2 | 1 | 10 |
| | Sub-Total hours/Week | 15 | 5 | 12 | 8 | 61 |
| | Total Hours/week | 40 | | | | |

| SEMESTER II | | | | | | |
|--------------------|---------------------------------|-------------------------------|----------|----------|-----------|---------------|
| Code | Module Title | Scheme Of Study Hrs/Wk | | | | |
| | | L | T | P | AS | Credit |
| SWT05207 | Entrepreneurship skills | 2 | 1 | 1 | 1 | 08 |
| SWT05208 | Social Advocacy and Empowerment | 3 | - | 2 | 2 | 10 |
| SWT05209 | Social work and Law | 3 | 1 | 2 | 1 | 11 |
| SWT05210 | Social Work Field Instruction | 2 | - | - | 1 | 5 |
| SWT05211 | Block Field Work practice | - | - | - | - | 25 |
| | Sub-Total hours/Week | 10 | 2 | 5 | 5 | 59 |
| | Total Hrs/week | 22* | | | | |

Key Note

L - Lecture hours

T - Tutorials hours

P – Practical/Project hours

AS – Assignment hours

* The rest of the hours per week in a semester will be allocated for Block Field practice

NTA LEVEL SIX: SEMESTER 1

| Code | Module Title | Scheme Of Study Hrs/Wk. | | | | |
|----------|---|-------------------------|----------|----------|----------|-----------|
| | | L | T | P | AS | Credit |
| SWT06101 | Social Policy | 2 | 1 | 1 | 1 | 7 |
| SWT06103 | Resource Mobilization for Social Welfare Services | 2 | 1 | 2 | 2 | 10 |
| SWT06104 | Rehabilitation Services in Social Work Practice | 2 | - | 1 | 1 | 7 |
| SWT06107 | Administration of Social Welfare Resources | 4 | 1 | 1 | 2 | 12 |
| SWT06108 | Social Work Best Practices | 2 | 2 | 2 | 2 | 12 |
| SWT06109 | Basic Leadership and Administration Skills | 2 | 1 | 1 | 1 | 8 |
| | Sub-Total hours/Week | 14 | 6 | 8 | 9 | 56 |
| | Total hours per week | 37 | | | | |

Key Note

L - Lecture hours

T - Tutorials hours

P - Practical hours

AS – Assignment hours

| SEMESTER II | | | | | | |
|-------------|--|-------------------------|----------|----------|----------|-----------|
| Code | Module Title | Scheme Of Study Hrs/Wk. | | | | |
| | | L | T | P | AS | Credit |
| SWT06202 | Applied Social Welfare Laws | 2 | 1 | 1 | 1 | 7 |
| SWT06205 | Social Work Research Methods | 2 | 1 | 1 | 2 | 10 |
| SWT06206 | Crisis Intervention and Conflict Management | 2 | 1 | 1 | 1 | 10 |
| SWT06210 | Social work interventions in HIV and AIDS | 1 | | 1 | 1 | 4 |
| SWT06211 | Quality Assurance and Improvement in Social Welfare Services | 1 | - | 1 | 1 | 5 |
| SWT06212 | Block Field Practice | - | - | - | - | 30 |
| | Sub-Total hours/Week | 8 | 3 | 5 | 6 | 65 |
| | Total hours/week | *22 | | | | |

* The rest of the hours per week in a semester will be allocated for Block Field practice

Department of Media and Library Studies

Introduction

The Department of Journalism and Media Studies offers three degree programs which are BA Journalism and BA Mass communication and Bachelor of Library Information Management where by students graduate as Journalists or as Public Relations Officers/Corporate Secretaries and library professionals. The degree programmes are designed in such a manner that during the first year of the studies, all students i.e. those taking B.A Journalism and those pursuing BA Mass Communication will undertake the same subjects. During the second and third year, however, the students taking Journalism will undertake a different programme from that of the Mass Communication hence the difference in their output. The Department of Journalism and Media Studies is currently preparing curriculum documents for two Master Degree Programmes which are MA (Mass Communication) and MA (Journalism).

Entry qualifications

Candidates for Journalism and Media Studies will only be admitted on the basis of the Open University of Tanzania's rules and regulations which govern the admission process.

Subject combination

There are 21 core subjects for BA Journalism and 23 core subjects for BA Mass Communication. Four of the core subjects which students of both programmes are required to undertake at Level I are offered by other Departments. These courses include OFC 017 Communication Skills, OCP 100 Introduction to Microcomputer Studies and Information Technology, OCP 121 Critical Thinking and Argumentation, and ODS 101A Concepts and Theories of Social Development. The core subjects for the BA Journalism programme forms a total number of 34 units while of the BA Mass Communication programme forms 36 units. BA Journalism students shall be required to take at least five elective courses while BA Mass Communication students shall take at least three elective courses to cover 39 units in order to graduate. Two elective courses are offered at Level I for both programmes, three elective courses at Level II whereby two are for BA Journalism and only one is for BA Mass Communication, and at level III only one elective course is offered for both programmes.

Assessment procedure

Course work for BA Journalism and BA Mass Communication accounts for 30% for the Main Timed Tests. The Annual Examination accounts for 70%, thus making a total of 100% score.

Student Field Work and Practicum

All students will be required to undertake field study at Level II and III. Also students shall be required to conduct practicum at all Levels. Field work and practicum carries two units at each level.

Bachelor of Arts in Journalism (BA Journalism)

LEVEL ONE

| Course Code | Course Name |
|-------------|---|
| OJO 121 | Introduction to Journalism and Mass Communication |
| OJO 122 | News Reporting – I |
| OJO 123 | Introduction to Media Law and Ethics |
| OJO 124 | Practicum |
| OJO 125 | English for the Media |
| OJO 126 | Kiswahili kwa Wanahabari |
| OCP 100 | Introduction to Computer |
| OFC 017 | Communication Skills |
| OPR 121 | Critical Thinking and Argumentation |
| ODS 101 A | Concepts and Theories of Social Development |

LEVEL TWO

| Course Code | Course Name |
|-----------------------------------|---|
| OJO 220 | Practicum |
| OJO 221 | News Reporting – II |
| OJO 222 | Features and Opinion Writing |
| OJO 223 | Photo Journalism |
| OJO 224 | Media Law and Ethics |
| OJO 225 | Editing, Layout and Graphics |
| OJO 226 | Media Research |
| OJO 227 | Broadcasting: Radio, Television |
| OJO 228N* | Specialized Reporting: HIV & AIDS, Environment. |
| TOTAL UNITS FOR THIS LEVEL | |

LEVEL THREE

| Course Code | Course Name |
|-----------------------------------|---|
| OJO 320 | Practicum |
| OJO 321N* | Specialized Reporting: Edutainment, Court Reporting, Political Reporting and Business Reporting |
| OJO 322 | New Media Technologies |
| OJO 323 | Media Management |
| OJO 324 | Investigative Journalism |
| OJO 325 | Dissertation |
| TOTAL UNITS FOR THIS LEVEL | |

*N=new course

NOTE: From academic year (2013/2014) course codes for the BA Mass communication Programme have changed from “OJO” to “OMC” for all series as indicated in the table below to reflect the name of the programme.

Bachelor of Arts in Mass Communication (BA Mass Comm)

LEVEL ONE

| Course Code | Course Name |
|--------------------|---|
| OMC 121 | Introduction to Journalism and Mass Communication |
| OMC 122 | News Reporting – I |
| OMC 123 | Introduction to Media Law and Ethics |
| OMC 124 | Practicum |
| OMC 125 | English for the Media |
| OMC 126 | Kiswahili kwa wanahabari |
| OCP 100 | Introduction to Computer |
| OFC 017 | Communication Skills |
| OPR 121 | Critical Thinking and Argumentation |
| ODS 101 A | Concepts and Theories of Social Development |

LEVEL TWO

| Course Code | Course Name |
|--------------------|---|
| OMC 220 | Practicum |
| OMC 221 | News Reporting – II |
| OMC 222 | International Issues in Mass Communication |
| OMC 223 | Advertising I |
| OMC 224 | Media Law and Ethics |
| OMC 225 | Editing, Layout and Graphics |
| OMC 226 | Media Research |
| OMC 227 | Broadcasting: Television and Radio |
| OMC 228 | Specialized Reporting: HIV & AIDS, Environment or Local Government. |
| OMC 229 | Public Relations I |

LEVEL THREE

| Course Code | Course Name |
|--------------------|--|
| OMC 320 | Practicum |
| OMC 321 | Specialized Reporting: Edutainment, Court Reporting Political Reporting and Business Reporting |
| OMC 322 | New Media Technologies |
| OMC 323 | Media Management |
| OMC 324 | Public Relations II |
| OMC 325 | Dissertation |
| OMC 326 | Advertisement II |

OLD CODES EQUIVALENT TO NEW CODES FOR BA JOURNALISM

| OLD CODE | NEW CODE |
|-----------------|-----------------|
| OJO 230 | OJO 220 |
| OJO 231 | OJO 228N |
| OJO 321 | OJO 324N |
| OJO 326 | OJO 325N |
| OJO 328 | OJO 321N |
| OJO 327 | OJO 320 |

OLD CODES EQUIVALENT TO NEW CODES FOR BA MASS COMMUNICATION

| OLD CODE | NEW CODE | COURSE NAME |
|-----------------|-----------------|---|
| OJO 121 | OMC 121 | Introduction to Journalism and Mass Communication |
| OJO 122 | OMC 122 | News Reporting – I |

| | | |
|---------|---------|--|
| OJO 123 | OMC 123 | Introduction to Media Law and Ethics |
| OJO 124 | OMC 124 | Practicum |
| OJO 125 | OMC 125 | English for the Media |
| OJO 126 | OMC 126 | Kiswahili kwa Wanahabari |
| OJO 230 | OMC 220 | Practicum |
| OJO 221 | OMC 221 | News Reporting – II |
| OJO 232 | OMC 222 | International Issues in Mass Communication |
| OJO 229 | OMC 223 | Advertising I |
| OJO 224 | OMC 224 | Media Law and Ethics |
| OJO 225 | OMC 225 | Editing, Layout and Graphics |
| OJO 226 | OMC 226 | Media Research |
| | OMC 227 | Broadcasting: Television and Radio |
| OJO 231 | OMC 228 | Specialized Reporting: HIV & AIDS, Environment or Local Government |
| OJO 228 | OMC 229 | Public Relations I |
| OJO 327 | OMC 320 | Practicum |
| OJO 328 | OMC 321 | Specialized Reporting: Edutainment, Court Reporting Political Reporting and Business Reporting |
| OJO 322 | OMC 322 | New Media Technologies |
| OJO 323 | OMC 323 | Media Management |
| OJO 324 | OMC 324 | Public Relations – II |
| OJO 326 | OMC 325 | Dissertation |
| OJO 325 | OMC 326 | Advertisement – II |

Bachelor of Library and Information Management (BLIM)

Programme Overview

Bachelor of Library and Information Management has been developed in response to the demand for a large number of trained personnel in libraries, documentation and information centres. Another reason is due to repeated requests by practitioners in the Library Science profession who need further training opportunities through a distance-learning mode of delivery that is both flexible and affordable. The Bachelor of Library and Information Management Programme is offered through distance learning mode. The main medium of instruction will be through print materials and ICT supported e-materials. To qualify for the award of a degree, a candidate must clear all the three levels of the degree course. The maximum duration of study is eight years but the teaching and learning process is flexible enough to allow fast learners to complete the programme earlier. A fast learning student may cover more units in a year; hence be able to complete the courses in less than the specified average period for obtaining a degree which currently is three years. The Bachelor of Library and Information Management Programme is designed to provide student with a combination of theoretical and practical knowledge and with abilities to apply the same in various functional areas of library and information science. Graduates from the programme are expected to develop attitudes associated with progressive information services and to develop an understanding of the value, role and application of modern technology as it relates to library operations and the transfer of knowledge.

Programme Structure

The programme requires a student to complete a minimum of 38 OUT units, including Practicum to graduate. A student will have to study at least 12 units for each academic year. Core courses are compulsory for all students. Beyond the required core courses, students have the option of crafting a program of study specific to their interests and career goals in order to fill the gap so as to have 12 units as a minimum; there is no restriction in studying electives.

LEVEL I

| Course Codes | Course Title |
|---------------------|--|
| OCP 100 | Introduction to Microcomputer Studies and Information Technology |
| OFC 017 | Communication Skills |
| OLM 101 | Introduction to Library and Information Sciences |
| OLM 102 | Information sources and references services |
| OLM 103 | Information Society |

| | |
|---------|---------------------------|
| OLM 104 | Organization of Knowledge |
|---------|---------------------------|

LEVEL II

| Course Codes | Course Title |
|---------------------|--|
| OLM 201 | Information Technology and its Applications in LIS |
| OLM 202 | Records Management and Archives Administration |
| OLM 203 | Collection Developments and Management |
| OLM 204 | Research Methods in Library and Information Sciences |
| OLM 205 | Publishing and Book Trade Industry |
| OLM 206 | Practicum |

LEVEL III

| Course Codes | Course Title |
|---------------------|---|
| OLM 301 | Information and Knowledge Management |
| OLM 302 | Management of Libraries and Information Centres |
| OLM 303 | Legal Issues and Professional Ethics |
| OLM 304 | Entrepreneurship and Information Marketing |
| OLM 305 | Digital Libraries |
| OLM 306 | Research Project |

ELECTIVES

Students should select at least one optional course at level II and III

| Course Codes | Course Title |
|---------------------|--|
| OLM 207 | Information systems design, analysis and Evaluation |
| OLM 208 | Multimedia Studies |
| OLM 307 | Sectoral Information systems and Services for users with special needs |
| OLM 308 | Database Management and information Retrieval |

Notes:

- (i) Total credits for the programme is 380 (TCU credits) which is equivalent to 38 OUT Units
- (ii) OCP 100 and OFC 017 are compulsory university-wide courses.

OLM 206 Practicum: The practical training attachment exercise will require each student to work in a selected Library, Archive or Information Centre for a minimum period of 42days. The field attachment exercise shall be assessed and graded.

PART THREE

Postgraduate Programmes

The Faculty offers various postgraduate studies programmes, especially **Masters Degrees and Postgraduate Diplomas**. The Master's Degree and Postgraduate Diploma programmes to be offered by FASS during the 2022/23 academic year are as follows:

(a) Master's Degree Programmes

- Master of Social work (MSW) – *Hybrid mode*
- Masters in Arts in Sociology Thesis
- Masters of Arts in Gender Studies (*MA GS*) *Hybrid*
- Master of Science in Economics (MSc. Economics) – *Hybrid mode*
- Masters in Community Economic Development (MCED)- *Hybrid mode*
- Masters of Arts in Monitoring and Evaluation (*MA M&E*)- *Hybrid mode*
- Master of Arts in Tourism Studies (*MATS*)- *Hybrid mode*
- Masters of Arts in History (*MA Hist*)- *Hybrid mode*
- Master of Arts in Natural Resource Assessment and Management (*MANRAM*)- *Hybrid mode*
- Master of Arts in International Cooperation and Development (*MICD*)- *Hybrid mode*
- Master of Humanitarian Action, Cooperation and Development (*MHACD*) *Hybrid mode*
- Master of Arts in Governance and Leadership (*MAGL*)- *Hybrid mode*
- Master of Arts in Kiswahili (*MA Kisw*)- *Hybrid mode*
- Master of Arts in Linguistics (*MA Ling*)-Thesis
- Master of Arts in Geography (*M.A. (Geogr)*)-Thesis
- Masters of Arts in Mass Communication (*MA MC*)- *Hybrid mode*
- Masters of Arts in Journalism (*MA Journalism*)- *Hybrid mode*
- Masters in Library Information Management (*MLIM*)-*Hybrid*)

(b) Postgraduate Diploma Programmes

- Post Graduate Diploma in Social Work- (*PGDSW*)- *Hybrid*

Admission Requirements

Candidate holding first degree or its equivalence in any field from recognized institutions is eligible for admission into FASS programme. Further admission criteria are as stipulated in the OUT prospectus

(www.out.ac.tz/prospectus)

Delivery Modes for Masters Programmes by Coursework

We are progressively making use of a Virtual Learning Environment (VLE) called MOODLE (Modular Object-Oriented Dynamic Learning Environment). To access MOODLE platform, you will need to log into the relevant portal with your username and password. MOODLE can be used for the purpose of downloading the relevant learning resources and it can also be used as a platform for student-student or student-teacher interactions. From new academic year starting Oct 2015 all FASS programmes will be offered through blended/hybrid executive mode where students learn through e-learning platform called MOODLE. Through this platform student are registered into the system and a lecturer for each course uploads documents to be read in one week. In week 2 a lecturer posts a discussion question and appoints two students to propose a model answer. Other students do discuss online by posting their emails commenting on the model answer.

Programme Structure and Assessment

So to complete one course there are six parts equaling to 12 weeks of learning for each course. There are three modules (trimesters) of about 12 weeks each required to complete the coursework. For example, if the programme has 6 taught

courses in total, for each module there could be two courses (i.e. two instructors). For each course in a trimester there is a different assessment because they are taught by different lecturers. For each course there is take home term paper (assignment) to be given to students in the second half of the respective trimester); and final comprehensive examination at the end of trimester. The online discussions weigh 20%, term paper-30% and final exam-50%. The lecturers do monitor accuracy of contributions each student makes when discussing to constitute the 20%. The examination is done by students at any regional center when they are ready. Students must have participated in the discussions for all the 6 parts of the course in the MOODLE platform for them to be allowed to do final examinations. The final exam is done after second F2F sessions after consultations with students.

Face to Face Sessions

There are two face to face sessions. The first one is done once only-this is for orienting students before the programme starts. The objective is to officially launch the programme and orient students on how to use MOODLE and how to register and modify their profiles in MOODLE platform. This takes about 2-4 days, normally on weekend in Dar es Salaam. If students cannot afford to come to Dar es Salaam, they are advised to visit any of the OUT regional centres where we have ICT technical staff who can register them into MOODLE system and orient them on how to use the MOODLE platform. In the first face to face all lecturers are encouraged to be around but most of the orientation is done by the programme coordinator and the Heads of Department. The second Face-to-Face is done at the end of each trimester where the lecturers involved in the trimester do meet with students normally in Dar es Salaam each for about 2 days hence 4 days for the two courses. The second Face-to-Face sessions are optional for students. Instructors do respond to difficult areas encountered during reading the documents and also during the discussions. It is also the time lecturer may insist or clarify on some academic issues that are of interest to students. The Face-to-Face sessions (first or second) can be conducted in any regional centre with at least 10 students. This implies that one does not necessarily have to leave workstation to do this course (and other FASS courses) from Oct 2015.

Duration of Programmes and Tuition Fees

The duration of the programmes is about 15months (about 9 months' coursework and 6 months of dissertation). The fee is Tsh. 500,000 for each course excluding dissertation i.e. the cost for one unit (10 credits) is equivalent to Tsh. 180,000, while most postgraduate courses weigh 2 units (20 credits).

The supervision cost for the dissertation is Tsh. 900,000. The minimum number of taught courses for most masters programmes is 6 (i.e. 2 courses per trimester excluding dissertation); hence the minimum tuition fee for such programme with 6 taught course would be Tsh. 3,900,000 [i.e. (500,000X6) + 900,000].

It should be noted that each examination is charged Tsh. 20,000 different from the tuition fee; hence a student should think of allocating Tsh. 120,000 for the 6 courses. This makes a comprehensive total fee to be Tsh. 4,020,000. The fee is paid in installments per trimester/module, and this is calculated according to the number of courses a student takes in one trimester/module. For example, if one takes two courses in a trimester/module, they will have to pay at least Tsh. 1,000,000.

Master of Arts in Governance and Leadership (MAGL)

Master of Arts in Governance and Leadership Programme is designed for practitioners working or intending to work within community based organizations, faith-based organizations, non-governmental organizations, international non-governmental organizations, international organizations, local governments and central government.

Programme Structure

| Code | Course Title |
|---------|---|
| OPS 601 | Advanced Political Theory |
| OPS 602 | Leadership, Governance and Development |
| OPS 603 | Advanced Research Methodology |
| OPS 604 | Leadership Ethics and Public Accountability |
| OPS 605 | Political Parties, Democracy and Elections |
| OPS 606 | Organization Behaviour |
| OPS 607 | Advanced Public Policy Analysis |
| OPS 608 | Strategic and Human Resource Management |
| OPS 609 | Advanced Public Administrative Law |

| | |
|---------|----------------------|
| OPS 699 | Masters Dissertation |
|---------|----------------------|

Masters of Arts in International Cooperation and Development (MICD)

The Masters programme in International Cooperation and Development (MICD) is a three trimester's programme that benefits from the experience of a high qualified team of lecturers who are specialized in various areas of international cooperation and Development such as Development Aid, International and Development Economics, Political Science, International Security and International Law. The programme is highly motivating for those who intend to work either in NGOs or enterprises with international activities or in the framework of multilateral institutions.

Programme Structure

| Code | Course Title |
|-------------|--|
| OIR 601 | International Cooperation and Development Policies |
| OIR 602 | International Politics and Security |
| OPS 603 | Advanced Research Methodology |
| OIR 604 | African International Relations and Diplomacy |
| OIR 603 | International Political Economy |
| OIR 605 | Public International Law |
| OPS 601 | Advanced Political Theory |
| OPS 699 | Methodology and Masters Dissertation |

Masters of Humanitarian Action, Cooperation and Development (MHACD)

The Master of Humanitarian Action, Cooperation and Development (MHACD) programme offers a wide approach to issues concerning humanitarian actions well as to methodological research procedures. The programme benefits from the experience of a highly qualified team of lecturers who are specialized in various areas of Humanitarian and Development Aid, such as Management of NGOs, Design and Implementation of Projects on Humanitarian Action, international and Development Economics, Political Science, International Security, and International Humanitarian Law.

Programme Structure

| Code | Course title |
|-------------|--|
| OHA 601 | Crisis, Reconstruction and Development |
| OHA 602 | Strategic Management of NGOs and Humanitarian Missions |
| OIR 601 | International Cooperation and Development Policies |
| OHA 603 | Public Health and Humanitarian Issues |
| OIR 602 | International Politics and Security |
| OPS 602 | Leadership, Governance and Development |
| OPS 603 | Advanced Research Methodology |
| OIR 605 | Public International Law |
| OIR 699 | Masters Research Projects (Dissertation) |

Master of Science in Economics (MSc Econ)

The Masters of Science in Economics (MSc. Econ) is a worthwhile graduate programme offered by the Open University of Tanzania through its Centre for Economics and Community Economic Development (CECED). The introduction of this programme was pressed by need for more trained economists at postgraduate level for sustainable national and international development.

Programme Structure

| Code | Course Title |
|-------------|-------------------------|
| OEC 630 | Advanced Microeconomics |
| OEC 631 | Advanced Macroeconomics |

| | |
|---------|---|
| OEC 632 | Advanced Mathematics and Econometrics |
| OEC 633 | Advanced Econometric |
| OEC 634 | Macroeconomic Policy for Developing Countries |
| | Electives (Choose one course) |
| OEC 635 | Economics of Money, Banking and Financial Markets |
| OEC 636 | International Economics |
| OEC 637 | Public Economics |
| OEC 638 | Environmental Economics |
| OEC 699 | Dissertation |

Master of Arts in Monitoring and Evaluation (MA M&E)

The Master of Arts in Monitoring and Evaluation (MA M&E) is an academic programme which seeks to develop sound and in-depth understanding on theoretical and practical aspects of monitoring and evaluation. It seeks to increase the pool of skilled human resources in the field of monitoring and evaluation in order to support government's initiatives in propelling socioeconomic development and wellbeing of Tanzanians. The programme adopts standard methods, techniques and best practices that are increasingly employed by international organizations such as the United Nations Development Programmes (UNDP) and the World Bank.

Programme Structure

| Code | Compulsory Courses (core) |
|-------------|---|
| OEC 620 | Fundamentals of Project Planning and Management |
| OEC 621 | Principles and Practices of Monitoring and Evaluation |
| OEC 622 | Research Methods and Statistics for Impact Evaluation |
| OEC 623 | Planning for Monitoring and Evaluation System |
| OEC 624 | Designing for Monitoring and Evaluation System |
| | Electives (Choose one course) |
| OEC 625 | Cost Benefit Analysis: Theory and Application |
| OEC 626 | Risk Management in Monitoring and Evaluation |
| OEC 627 | Environmental Impact Assessment |
| OEC 699 | Dissertation |

Master of Community Economic Development (MCED)

The Masters of Community Economic Development (MCED) is an exciting programme offered by the Open University of Tanzania through its Centre of Economics and Community Economic Development. (CEC)

Programme Structure

| Compulsory Modules (Core) | |
|----------------------------------|---|
| Course Code | Course Title |
| CED 631 | Principles and practice of CED |
| CED 632 | Advanced Research methods for Social scientists |
| CED 633 | Economics for CED |
| CED 634 | Project design and management CED |
| CED635 | Organizational management for community organizations |
| CED 636 | Micro-Enterprise Development CED |
| CED 699 | Dissertation |

Master of Arts in History (MA History)

MA programme in History is a two years programme divided into: Teaching, Book reviews and Term papers based on a selected list of- topics and a Final Examination. The programme gives the history graduate the advantage of having skills with many practical applications in the job-market and adds upon what they have acquired during their undergraduate studies.

Programme Structure

| Code | Course Name |
|---------|--|
| OHI 601 | Philosophy and Theory of History |
| OHI 602 | Contemporary Issues in African Historiography |
| OHI 603 | History Research Methodology |
| OHI 604 | Colloquium on the Economic History of Tanzania |
| OHI 605 | Graduate Seminar on Globalization |
| OHI 606 | African Encounter with World Religions |
| OHI 607 | Spirit, Mediums, Disease and Healing |
| OHI 608 | African Indigenous Knowledge Systems |
| OHI 609 | Peasantry and Labour Studies in Tanzania |
| OHI 612 | Dissertation |

Master of Arts in Kiswahili

The MA Kiswahili programme has the three key objectives:

- (i) To train skilled professionals in Kiswahili Language, Linguistics and Literature
- (ii) Produce scholars who can comprehend the significance of Kiswahili Language and its contribution towards national and international development
- (iii) To equip students with stock of capabilities particularly in research and publication.

Kiswahili Literature - Core Courses

| Course Code | Course Title |
|-------------|--------------------------------|
| OSW 601 | Classical & Modern Poetry |
| OSW 602 | Kiswahili Drama |
| OSW 603 | Kiswahili Novel |
| OSW 604 | Theories of Literary Criticism |
| OSW 605 | A selected Author |
| OSW 606 | Oral Literature |
| OSW 607 | Movie Criticism |

Kiswahili Linguistics

| Course Code | Course Title |
|---------------------------|----------------------------------|
| OSW 608 | Kiswahili Phonology |
| OSW 609 | Kiswahili Morphology |
| OSW 610 | Kiswahili Syntax |
| OSW 611 | Kiswahili Semantics |
| Elective Courses | |
| OSW 612 | History of Kiswahili Dialect |
| OSW 613 | Sociolinguistics |
| OSW 614 | Translation: Theory and Practice |
| OSW 615 | Kiswahili Lexicography |
| Compulsory Courses | |
| OSW 616 | Research Methodology |
| OSW 617 | Dissertation Writing |

Master of Arts in Natural Resource Assessment and Management (MA NRAM)

MA (NRAM) is a broad continuum programme intended to quench thirst for knowledge to different clients regardless of age, sex and nationality. It is a timely programme aspiring to fill the knowledge and intellectual gap on sustainable natural resource management which is a universal concern today embracing both those with social sciences and natural sciences backgrounds. The main objective of the MA (NRAM) Programme is to equip professionals with innovative knowledge, skills and values in integrated natural resource assessment and management in order to enhance understanding of current natural resource management and environmental issues.

Programme Structure

| Course Code | Title |
|-----------------------------|---|
| ORM 601 | Contemporary Issues in Natural Resource Assessment and Management |
| ORM 602 | Economics of Environmental and Natural Resources |
| ORM 603 | Climate Change and Environmental Impact Assessment |
| ORM 604 | Population Dynamics and Natural Resource Management |
| ORM 605 | Applied GIS and Remote Sensing for Natural Resources Assessment |
| ORM 606 | Research Methodology and Techniques in Natural Resource Assessment and Dissertation |
| Electives Choose One | |
| ORM 607 | Land Degradation and Rural Livelihoods |
| ORM 608 | Sustainable Energy Resources for Developing Countries |
| ORM 609 | Biodiversity Conservation and Ecosystem Management |
| ORM 610 | Ecology of Tropical Natural Resources |
| ORM 611 | Changes in Urban Landscape and Future of Natural Resources |

Master in Tourism Planning Management (MTPM)

Master in Tourism Planning and Management (MTPM) programme is aimed at producing well informed and highly knowledgeable graduates with a critical awareness of tourism as one of the most powerful forces in the globalizing World. Graduates should be in a position to demonstrate a theoretically based and practically sound level of competence for employment as tourism officers, tourism marketers, analysts, tourism planners, travel agents, managers, researchers, educators, policy-makers, and tourism entrepreneurs.

Programme Structure

| Code | Course Title |
|---------|--|
| OTM 601 | Theories and Practice of Tourism |
| OTM 602 | Tourism Policy and Planning |
| OTM 603 | Approaches to Hospitality Management |
| OTM 604 | Tourism and Hospitality Entrepreneurship |
| OTM 605 | Tourism Marketing and Promotion |
| OTM 606 | Sustainable Tourism Development |
| OTM 698 | Advanced Research Methods and Dissertation |

Master of Social Work (MSW)

Master of Social work is designed to enable students to enhance human wellbeing and help clients to meet their basic human needs. Further, the program aims at enabling students to empower clients who are vulnerable opposed and living in poverty. A student must accumulate a total 180 credits to graduate out of which 80 are for Practicum and dissertation. The remaining 100 are from taught courses i.e. 80 credits from 4 core courses and 20 credits from one elective course. The duration for this programme is about 18 months.

Programme Structure

| Course Code | Course Title |
|---|---|
| OSP 602 | Advanced Clinical Social Work |
| OSP 603 | Advanced Administrative and Community Social Work |
| OSP 604 | Advance Social Welfare Policy |
| OSP 605 | Advanced Social Work Research Methodology |
| OSP 606 | Postgraduate Field Practicum (600 hours) |
| OSP 607 | Dissertation |
| Elective Courses (Select one course for your specialization) | |

| | |
|---------|--|
| OSP 610 | Leadership with Children and Families Services |
| OSP 611 | Leadership in Healthy Services |
| OSP 612 | Leadership in Development & Emergency Response |
| OSP 613 | Leadership in Social Work Education |

Master of Arts in Gender Studies (MA GS)

Master of Arts in Gender Studies (MA GS) is structured in a way that it produces scholars who are conversant and capable of addressing issues related to gender disparities and gender inequalities in the society.

Programme Structure

| Course Code | Title (Compulsory) |
|---|--|
| OGS 610 | Feminist/Gender Theories, |
| OGS 611 | Principles of Gender Construction, Deconstruction & Gender Mainstreaming |
| OGS 612 | Gender and Community Economics |
| OGS 613 | Gender Population & Development |
| OGS 614 | Gender Research Methodology and Dissertation |
| Elective Courses (select at least 2 courses) | |
| OGS 615 | Gender Technology and Education |
| OGS 616 | Gender, Health and Social Issues |
| OGS 617 | Gender food and environment |
| OGS 618 | Gender, language, literature and culture |
| Total Units | |

Postgraduate Diploma in Social Work (PGDSW)

Postgraduate Diploma in Social Work (PGDSW) has been motivated by the rapid increase of multifaceted problems due to local and international forces that affect the majority of the people particular the disadvantage ones. The programme is suitable for students who basically do not have social work background at the bachelor's degree/advanced diploma levels that aspire for Master of Social Work.

Programme Structure

| Code | Title |
|---------|--|
| OSP 501 | Social Work Professional Ethics |
| OSP 503 | Human Behavior and Social Environment |
| OSP 504 | Social Work Practice with Individuals, Families and Groups |
| OSP 506 | Social Work Practice with Communities and Organizations |
| OSP 508 | Introduction to Field Practice |
| OSP 509 | Social Welfare Policy Analysis and Evaluation |
| OSP 510 | Field Practice (Block) |

Master of Arts in Sociology (Thesis)

The MA Sociology thesis is a one-of-a-kind research project that requires a candidate to engage with previous theories and research in order to articulate research questions, collect and analyze data, interpret research findings, and eventually produce new knowledge in an academic setting.

MA thesis in sociology allows candidates to demonstrate their ability to conduct independent original research. It allows them to hone their research and writing skills, as well as plan and carry out an independent study under the supervision of the professors.

ENTRY QUALIFICATIONS FOR MA SOCIOLOGY (THESIS)

Candidates for the MA Sociology (Thesis) must have a GPA of 2.7 or higher in their first degree in sociology or a related field such as social work, journalism and mass communication, economics, political science, population and development studies, public administration, international relations, public health, community development, psychology, medicine, gender studies, history and cultural heritage, education, or another relevant field of study. The

fee for all university programs including MA Sociology (Thesis) is published in the relevant section in the prospectus according to the approval of the OUT Council.

Master of Arts in Mass Communication (MA MC)

The Department of Journalism and Media Studies in the Faculty of Arts and Social Sciences for the past 6 years has been offering BA in Mass Communication and BA Journalism degree programmes. Some of the graduates of the two programmes work in media houses, in public and private organizations as journalists, editors, communication/information officers or Public Relations Officers.

The Master of Arts in Mass Communication degree programme is designed to meet the needs of labour market and educational needs of recent graduates and professionals. The program's curriculum emphasizes the integrated nature of the communication discipline. For example, the program offers education in Communication research, theories of mass communication, public opinion and media, theories of development and development communication, communication regulations and ethics, new media technology and communication planning. Therefore, the programme aims to provide the opportunity for career enhancement and/or further graduate studies.

Programme Structure

| Course Code | Course title |
|--------------------|--|
| OMC 600 | Mass Communication Theories and Models |
| OMC 601 | Mass Communication Regulations |
| OMC 602 | Mass Communication Ethics |
| OMC 603 | Public Opinion and Mass Media |
| OMC 604 | Advanced Mass Communication Research Methodology |
| OMC 605 | Master's Dissertation |
| OMC 606 | Mass Communication Planning and Management |
| OMC 607 | Strategic Corporate Communication |

Master of Arts in Journalism (MA JOURNALISM)

The main objective of the MA Journalism Programme is to equip middle and senior professional media personnel with innovative knowledge, skills and values in news analysis, editorial writing and management. The need for the expertise in these areas arises from various factors including lack of news analysis and poorly written editorials in local media and presence of media managers

The programme is open to applicants with a background of journalism and mass communication or social science subjects but preferably with a minimum of three years' experience in active journalism or media related field. Applicants with a science background will also be considered admission if they meet the minimum entry qualifications. The programme will be open to relevant institutions both government and non-governmental and individual self-sponsored candidates upon proving that they are financially capable of meeting all the financial obligations demanded by the programme.

Programme Structure

| Course code | Course title |
|--------------------|--|
| OJO 600 | Editorial Writing and News Analysis |
| OJO 601 | Applied News Analysis |
| OJO 602 | Mass Media Regulations |
| OJO 603 | Mass Media Ethics |
| OJO 604 | Strategic Media Management |
| OJO 605 | Advanced Mass Media Research Methodology |
| OJO 606 | Dissertation |

Master in Library & Information Management (MLIM)

This programme is designed and developed to build professional skills across the information industry and creates opportunities for specializations in a variety of disciplines. It is intended for information practitioners who envision to work within information-based organizations, non-government organizations, international organizations, and central or local government departments. The programme is committed to carry out highly effective participatory approaches to managing and solving information management problems in the communities. The programme is committed to carrying out highly effective participatory approaches to managing and solving library and information science problems affecting the industry.

The main objectives of this programme are:

- ✓ To train potential librarians/ information managers on the best and participatory way to work in the information-based organizations
- ✓ To generate knowledge and professional skills on information management to enable leaders to make informed decisions
- ✓ To assist in building institutions that will ensure equitable sharing benefits of information
- ✓ To build capacity among information professionals working in public and private institutions

Programme Mode of Delivery

Masters in Library and Information Management is an 18-month, 18-unit (equivalent to 180 TCU Credits) programme. Each student of Masters in Library and Information Management will be required to undertake all core courses. The programme will be offered through blended mode where e-learning platform (MOODLE) is mostly used followed with a short face-to-face lecture session in three trimesters of taught coursework. In each trimester two courses are taught and lasts for about 12 weeks.

Attendance to Face to Face is optional but students are encouraged to attend and if not unable then students are encouraged to use Skype to follow class sessions. Participation in discussions through MOODLE platform is compulsory for students and no one is allowed to sit for final exam without effectively participating in MOODLE discussions. After coursework, students are supposed to work on their dissertations. If a student has passed coursework but failed to do (or pass) dissertation beyond allowable registration duration is offered an ex-Postgraduate Diploma.

Programme Structure

| Course Code | Course title |
|-------------|---|
| OLM 600 | Fundamentals of Library and Information Management |
| OLM 601 | Organization of Knowledge |
| OLM 602 | Information and Communication Technology Applications |
| OLM 603 | Records Management and Archival Administration |
| OLM 604 | Management of Library and Information Centers |
| OLM 605 | Research Methodology |
| OLM 606 | Master's Dissertation |

Doctor of Philosophy Degree (PhD)

To obtain admission to the PhD degree programme in the Faculty of Arts and Social Sciences of the Open University of Tanzania, a candidate should hold a relevant Master's degree of the OUT of equivalent standing from another approved University.

How does an aspirant register for a PhD? And for how long does it last?

- ✓ The registration of PhD candidates shall follow a two stage (stage I & II) process as prescribed for Masters-by-thesis candidates.
- ✓ Candidates for the PhD shall be required to register at the beginning of the first year of their studies and to renew their registration at the beginning of each subsequent year. Failure to renew registration shall mean automatic discontinuation from the studies.

- ✓ A registered PhD candidate shall be assigned a supervisor(s) appointed by the Senate on recommendation of the Faculty. The supervisor(s) will be responsible for guiding the candidate in his/her research and shall, once every three months submit reports on the candidate's progress.
- ✓ The duration of registration period shall not exceed *five years*. Failure by the candidate to complete the PhD degree programme within the prescribed period shall lead to her or his discontinuation from study, unless an extension is granted by the Senate. The maximum duration of the registration period shall not exceed *six years*.

PART FOUR

List of FASS Staff

DEAN'S OFFICE

Dean and Senior Lecturer

Dr. Dunlop Ochieng: Dip (Ed); B.A (Culture) Hons; M.A (Linguistics) UDSM, PhD (Germany)

Coordinator, Postgraduate Studies (PGS)

Dr. Fredrick Ladislaus Batinoluho: BSc in Horticulture (SUA); MSc in Protected Landscapes Management (Integrating Conservation and Development), Univ. of Wales, Aberystwyth, UK; MBA Corporate Management (Mzumbe University). Phd (OUT)

Faculty Examination Officers

Alexander Ndibalema Kaija: Certificate in Teaching Grade IIIA (Morogoro); Certificate in Fine Arts & Education (Butimba); BSW (Institute of Social Work);MSW (Open University of Tanzania)

Mr. Vincent Mpepo: BA (Mass Comm) UDSM; MA Mass Communication (OUT)

Faculty Planners

Mr. Manning Yusuph B.: Diploma in International Relations & Diplomacy, (Center for Foreign Relations) B.A. Public Relations & Marketing, Master of Arts in Mass Communication (SAUT)

Faculty Quality Assurance Coordinator

Ms. Celia Muyinga BA (Hons) Tourism Management, (Leads UK) MA Tourism Studies with Ecotourism, NAPIER, UNI, Scotland;

Faculty Consultancy and Community Outreach

Dr. Thereza Mugobi: BA Tourism and Management, University of Western Cape, Cape Town, SA: MA Economics and Communication (International Tourism), University of Lugano, Switzerland, Phd (OUT)

ADMINISTRATIVE STAFF

Senior Human Resources Management Officer and Faculty Administrator

Ms. Nuru Abdallah:

CENTRE FOR ECONOMICS AND COMMUNITY ECONOMIC DEVELOPEMNT

Coordinator of the Centre and Lecturer

Dr Christopher Awinia BA (DS); MA (DS) UDSM; PhD (OUT)

Head, Department of Economics

Dr. Timothy Lyanga: BA (Econ)- OUT, MBA (OUT)

Head, Department of Community Economic Development

Dr. Harrieth Mtae: Bsc (Human Nutrition) SUA; MA (Rural development) SUA; PhD(OUT)

Associate Professor

Prof. Deus D. Ngaruko: BSc (Agric.Economics) Makerere University; MSc (Agric.Economics) SUA; DIC (Economics); PhD (Econ) Imperial College London

Senior Lecturer

Dr Felician Mutasa: BA (Econ)-UDSM, MA (Public Administration) Carleton, MA (Economic Policy and Planning) (ISS-The Hague); PhD (Econ) UDSM

Lecturers

Dr Christopher Awinia BA (DS); MA (DS) UDSM; PhD (OUT)

Dr. Harriet Mtae: Bsc (Human Nutrition) SUA; MA (Rural development) SUA; PhD(OUT)

Dr. Timothy Lyanga: BA (ECON); MBA, PhD OUT

Dr. Noel Matemba: BA; MA (DS) UDSMA, PhD SUA.

Dr. Elina Lyamuya

Dr. Regina Malima

Dr. Wambuka Rangi

Dr. Albert Memba

Dr Emmanuel Nyankweli

Assistant Lecturers

Ms Nanzia Toroka: BA (Env.Mngt) Hons; MA (DS) UDSM

Mr. Fidelis Kisusi: BA (Regional Dev. Planning)-IRDP; MA (Rural Development) SUA

Mr. Henry Tumaini: BA (ECON), SAUT MA,

Mr. Abdul Kilima

Mr. Godfrey Gradius

Ms. Janeth Gwimile

Ms. Maria Erasmus

Ms. Zakia Ituja

DEPARTMENT OF POLITICAL SCIENCE, PUBLIC ADMINISTRATION, HISTORY AND PHILOSOPHY**Head of Department and Lecturer**

Dr. Miraji M. Kitigwa: BAPSPA (Hons); MA IR; PhD (UDSM)

Senior Lecturers

Dr. Jacob J. Lisakafu: BSc.(URP) Hons (UDSM), M.A. (Leipzig), PhD-International Relations and Global Studies (Leipzig)

Lecturers

Dr. Emmanuel J. Mallya: BA (Ed) (Hons) UDSM; MA (ISS-The Hague), PhD in Social Sciences (Minority studies); University of Fernando Pessoa, Porto, Portugal

Dr. Miraji M. Kitigwa: BAPSPA (Hons); MA IR, PhD (UDSM)

Assistant Lecturers

Mr. Furaha Julius: BA PS&SO (Hons); MA IR (UDSM)

Mr. Twaha M. Katabaro: BAPSPA; MA PA (UDSM)

Mr. Ahmed I. Mussa: BA (Ed), UDSM; BAPA (OUT); MA PA (UDSM)

**Mr. Elias H. Mseti: BLGM, MPA (Mzumbe)

**Mr. Revocatus K. Bin'Omukama: BA PSPA; MPA (UDOM)

**Ms. Hiltruda Mahudi: B.A (History & Arch) Hons.; M.A (Arch), UDSM

**Rev. Alex Kasisi BA (Divinity) Makumira, MA (Theology) Makumira, PGD(Ed) OUT

**Mr.Paschal J Mheluka: BA in History(UDSM), PGDE (OUT), MA History (OUT)

**Mr. Nassor A. Suleiman; Dip(Ed) Zanzibar, BA (Ed) Hons in History (SUZA) Zanzibar, MA Hist. (UDSM)

**Mr. Cosmas Kawonga BA (Ed)(Hons) Dar, MA History (OUT)

** AcademicStaff on study leave

Tutorial Assistant

Manoni Mayalla BA in History (UDSM)

DEPARTMENT OF LINGUISTICS AND LITERARY STUDIES

Head of Department and Senior Lecturer

Dr. Zelda Elisifa: Dip (Ed) Marangu TC, B (Ed). UDSM, MA (Linguistic) UDSM, PhD (Linguistics) –OUT

Senior Lecturers

Dr. Dunlop. O. Ochieng; Dip (Ed); B.A (Culture) Hons; M.A (Linguistics) UDSM, PhD (Germany)

Dr. Zelda Elisifa: Dip (Ed) Marangu TC, B (Ed). UDSM, MA (Linguistic) UDSM, PhD (Linguistics) –OUT

Dr. Hadija Jilala: Dip (Ed); BEd Arts (Hons); M.A (Linguistics), PhD-Kiswahili (UDSM).

Lecturers

Dr. Omary Mohamed: B.A (Education) (UDSM); M.A (Kiswahili) (UDSM); M.A Development Studies (UDSM).
PhD (Literature) (OUT)

Dr. Salma Hamad: BA (Ed) The State University of Zanzibar; MA (Linguistics) UDSM; PhD (UDSM)

Dr. Jacob Leopard: BA (Ed) (English) UDSM, MA Linguistics, (UDSM) PhD (NENU), China

Dr. Julius Francis; Dipl. (Education) BA (Education; MA (Linguistics), PhD (Linguistics), UDSM

Dr. Nasra Habibu: BA(Ed, Hons); M.A (Kiswahili) UDSM PhD OUT

Dr. Ancyfrida Prosper: BA (Hons), MEd (Western Cape), PhD (Education) (OUT)

Dr. Nasra Habibu: BA (Ed, Hons) UDSM; M.A (Kiswahili) UDSM, PHD (Swahili) (OUT)

Assistant Lecturers

Ms. Caroline Mugolozzi: Dipl (ED) Morogoro TC; BAED (DUCE) MA Lit (OUT)

Mr. Bakari Kombo Bakari : Dipl(ED) Nkurumah TTC ; BA(Hons) Islamic University Uganda ; MA Linguistics (OUT)

Mr. Constantine Njalambaya : BED (Psychology and French) UDSM ; MA (DS) University of Geneva

Ms. Elizabeth Kyara: BA (ED) (Linguistics) UDSM; MA (Linguistics) UDSM

Mr. Mosi Mlibwa: BA(ED) (Linguistics + Geography) MUCE, MA (Linguistics) UDSM

Mr. Charles Lazaro: BA (ED) (Kiswahili + Linguistics) STEMUCO, MA (Linguistics)SAUT.

Mr. Emmanuel Kisika: BA (ED) (Literature & Linguistics) MUCE, MA (Literature) UDSM

Mr. Emmanuel. O. Msangi: BA (Kiswahili) UDOM; MA (Kisw.) OUT

Tutorial Assistants

Mr. Faustine D. John: Dip (ED) Marangu TTC, BAED (Literature) OUT

Ms. Frida Mbafu: Dip (Ed) Korogwe TTC; BED (Linguistic) UDSM

Ms. Theresia Mbogo: BA Kiswa (UDSM), Education (OUT)

Mr. Yohana John: BAED (UDOM), MED APPS (OUT)

DEPARTMENT OF GEOGRAPHY, TOURISM AND HOSPITALITY SERVICES

Head of Department

Dr. Halima Kilungu: BSc. Wildlife Management (SUA), MSc. Integrated Water Resources Management (IWRM)
UDSM, PhD –Tourism and Environmental Change-Climate: Wageningen University –The Netherlands

Associate Professors

Prof. Jumanne D. Kalwani: Dip.(Ed) Dar; B.A. (Ed) Hons; M.A (Demo); PhD (Geography) UDSM.

Prof. Magreth S. Bushesha: BA (Ed), MA, UDSM; PhD (Geography & Environmental Studies), Bradford, UK

Senior Lecturers

Dr. Emmanuel P. Mhache: B.A (Hons) (Land Use Planning & Environmental Studies); M.A (Geography and Environmental Management) UDSM; PGD–Poverty Analysis REPOA/ISS/ESRF, PGDE-OUT; PhD (Geography)-UDSM.

Dr. Cosmas B. M. Haule: Dip. (Ed) Korogwe; B.Ed (Hons) UDSM; MSc. Agric. Eng. (Land and Water Management Studies) SUA; Ph.D (Agronomy) SUA

Dr. Anna Wawa: BSc (Ed) Hons; M.A (Demo) UDSM, PhD (Environment) OUT.

Lecturers

Dr. Reguli B. Mushy: B.A (Ed) Hons, UDSM; M.A (Geography) UDSM; PGD- Poverty Analysis (REPOA/ISS/ESRF) PhD (Geography) (UDSM).

Dr. Elieza Y. Musana: Dip. (Ed): B.A (Ed); M.A. (Demo) UDSM, PhD. (OUT)

Dr. Emmanuel N. Kazuva: B.A. (Ed) OUT; MSc. NARAM (UDSM), PhD (NENU) China

Dr. Ruth W. John: Dip. (Ed) Butimba TTC; B.A. (Ed) Hons. MA Geography and Environmental Management (UDSM) PhD (UDSM)

Dr. Halima Kilungu: BSc. Wildlife Management (SUA), MSc. Integrated Water Resources Management (IWRM) UDSM, PhD –Tourism and Environmental and Climate Change: Wageningen University –The Netherlands

Dr. Fredrick Ladislaus Batinoluho: BSc in Horticulture (SUA); MSc in Protected Landscapes Management (Integrating Conservation and Development), Univ. of Wales, Aberystwyth, UK; MBA Corporate Management (Mzumbe University). Phd (OUT)

Dr. Thereza Mugobi: BA Tourism and Management, University of Western Cape, Cape Town, SA: MA Economics and Communication (International Tourism), University of Lugano, Switzerland, Phd (OUT)

Dr. Veronica Nyerere: BA-Tourism (Hons) Makerere; Masters of International Business (UDSM), Phd (OUT)

Assistant Lecturers

Ms. Celia Muyinga BA (Hons) Tourism Management, (Leads UK) MA Tourism Studies with Ecotourism, NAPIER, UNI, Scotland;

Mr. Michael Patrick: BA-Tourism (Hons) Makerere MSc. Tourism Studies, Mid-Sweden University- Ostersund Sweden

Mr. Samwel Savunyo

Ms. Habiba Ally: B.A. (Ed); MSc. (Climate Change) (UDSM)

Tutorial Assistant

Ms Salome Massawe, BA-Tourism, OUT

**Mr Reginald Kimario, BSc-Tourism, SUA

** On study leave

DEPARTMENT OF MEDIA STUDIES AND LIBRARY SERVICES STAFF

Head of Department and Lecturer

Dr. Henry L Mambo: BA(Public Admn and Intl Relation)Hons, MA Library Science,UK; PhD (Univ of Natal South Africa)

Senior Librarian

Dr. Henry L Mambo: BA(Public Admn and Intl Relation)Hons, MA Library Science,UK; PhD (Univ of Natal South Africa)

Lecturers

Dr. Lilian Isowe: Dip. Ed. (Changómbe TTC); BEd Hons (UDSM), MA Information Studies (UDSM), PhD (Moi Univ)

Senior Lecturer

DEPARTMENT OF JOURNALISM AND MEDIA STUDIES STAFF

Head of Department and Assistant Lecturer

Ms. Kahenga H. Dachi: Dip (Foreign Correspondence in Practice); B.A (P.R. and Advertising), MA (Mass Comm) UDSM.

Assistant Lecturers

Mr Bujo Ambosisye: BA (Mass Comm), M.A. (Mass Comm) SAUT

Ms. Kahenga H. Dachi: Dip (Foreign Correspondence in Practice); B.A (P.R. and Advertising), MA (Mass Comm) UDSM.

Mr. Libe Chonya: Bachelor of Arts in Mass Communication (BAMC), SAUT; Master of Arts in Mass Communication (MAMC), SAU

Mr. Manning Yusuph B.: Diploma in International Relations & Diplomacy, (Center for Foreign Relations) B.A. Public Relations & Marketing, Master of Arts in Mass Communication (SAUT)

Mr. Vincent Mpepo: BA, MA (Mass Com) OUT

Tutorial Assistant

Husna Nurdin

DEPARTMENT OF SOCIOLOGY AND SOCIAL WORK

Head of Department and Lecturer

Dr Mariana Makuu: Advanced Diploma in Social Work (ISW), Master of International Social Welfare and Health Services (Oslo University College, Norway), Doctor of Philosophy in Social Work (University of Botswana).

Lecturers

Dr. Jacqueline L. Bundala: B.A (Gen), Agra. M.A (Rural Sociology and Community Development). Ph.D (Sociology), Agra.

Dr. Fauzia Mohamed: BA-(Hons) Sociology; MA-Sociology (UDSM); PhD-Sociology; L.S.E, U.K

Dr Mariana Makuu: Advanced Diploma in Social Work (ISW), Master of International Social Welfare and Health Services (Oslo University College, Norway), Doctor of Philosophy in Social Work (University of Botswana).

Dr Betty D. M. Mntambo: Dip. (Environmental Health Sciences) Bsc (Agriculture Education and extension), M.A (Rural Development), Sokoine University of Agriculture. PhD (International Development, University of East Anglia, Norwich, UK)

Dr. Buhori A. Johnas: B.A (Welfare Science & Development Studies), UNISA, Master of Social Work –University of Botswana; Doctor of Philosophy of the Open University of Tanzania (The OUT)

Ms. Chitegetse Minanago: B.A (Sociology), (hons); MA (Sociology) UDSM, PhD

Dr. Straton Ruhinda Kakoko: Dipl (Ed) Marangu Teachers' College, Moshi, B.A (Sociology), (hons), MA (Sociology), PhD UDSM

Dr. Naftari Ng'ondi: Advanced Diploma In Social Work (National Social Welfare Training Institute, Dar-Es-salaam, Tanzania), Master's of Science Degree in Social Work (Goteborg University, Sweden.), PhD in Social Work (University of Illinois at Urbana Champaign, Illinois, USA)

Assistant Lecturers

**Ms. Atuwene A. Mbelle: B.Ed (Psychology); M.A (ASP) UDSM

Ms. Sipa Yusuf Shaaban: Ordinary Diploma in Gender Issues & Development (Kivukoni Academy of Social Science); BSW (Institute of Social Work);MSW (Open University of Tanzania)

****Alexander Ndibalema Kaija:** Certificate in Teaching Grade IIIA (Morogoro); Certificate in Fine Arts & Education (Butimba); BSW (Institute of Social Work); MSW (Open University of Tanzania)

Mzungu, K. Jeddy: Certificate in Medical Laboratory Sciences (Bugando), Ordinary Diploma in Medical Laboratory Sciences, (UDSM), Adv. Diploma in Medical Laboratory Sciences (MUHAS), BASW (OUT).

Judith Shitindi: BA (Sociology) MA(Sociology) St. Augustine University of Tanzania, Mwanza

Robert Kasili Makungu: Basic Certificate in Social Work (ISW), Diploma in Social Work (ISW), Bachelor in Social Work (ISW), Masters in Social Work, (ISW)

Tutorial Assistants

Mr. Joseph Challe: BSW (Institute of Social Work)

Asia Mwanzi: BSW (Institute of Social Work)

Faudhia Kitenge: Certificate in Community based work with Children and Youth (ISW), Diploma in Social Work (ISW) , Bachelor in Social Work (ISW)

Juventus R.Jovin: BA(Sociology),UDSM

Zabron S. Buyoya: Mwenge Catholic University Moshi BA(Sociology and Social Work)

****On study leave**

FACULTY OF ARTS AND SOCIAL SCIENCES

LIST OF ACADEMIC STAFF

1: DEPARTMENT OF SOCIOLOGY AND SOCIAL WORK

| S/N | STAFF NAME | ACADEMIC RANK | WORK STATION | PHONE NO. |
|------|------------------------|----------------|--------------|-------------------------|
| 1. | Dr. Fauzia Mohamed | Lecturer | HQ | 0782 374953/0655374953 |
| 2. | Dr. Jacqueline Bundala | Lecturer | HQ | 0714 256501 |
| 3. | Dr. Mariana J. Makuu | Lecturer | HQ | 0716 211283/0783 461759 |
| 4. | Dr. Betty Mntambo | Lecturer | Morogoro | 0754 816058 |
| 5. | Dr. Straton K. Ruhinda | Lecturer | Simiyu | 0754030242 |
| 6 | Dr. Johnas Buhori | Lecturer | Tabora | 0629 866738/0757 210969 |
| 7. | Dr Naftal Ng'ondi | Lecturer | HQ | 0754497122 |
| 8. | Chitegetse Minanago | Lecturer | Kigoma | 0715 874005 |
| 9. | Alexander Ndibalema | Asst. Lecturer | HQ | 0752 605332/0717 937935 |
| 10. | Sipha Shaaban | Asst. Lecturer | HQ | 0784 239573/0735 239573 |
| 11. | Atuwene Amon Mbelle | Asst. Lecturer | HQ | 0759 265551/0653 265551 |
| 112. | Joseph Challe | Tutorial Ass. | HQ | 0712 857237/0757 103390 |
| 13. | Jeddy Mzungu | Asst. Lecturer | Dodoma | 0757 889576 |
| 14. | Asia Namamba | Tutorial Ass. | Dodoma | 0754 217769 |
| 15. | George Mabula | Asst. Lecturer | Katavi | 0765 393131/0628932454 |
| 16. | Meinrad Lembuka | Asst. Lecturer | Katavi | 0712 555992/0789 555992 |
| 17. | Judith Shitindi | Asst. Lecturer | Singida | 0767886965/0653280028 |
| 18. | Faudhia Kitenge | Tutorial Ass | HQ | 0677897475 |
| 19. | Robert Kasili Makungu | Ass. Lecturer | Pwani | 0687017702 |
| 20. | Zaburon S. Buyoya | Tutorial Ass | Tanga | 0769461095 |
| 21. | Juventius R. Jovin | Tutorial Ass | Geita | 0752044260 |
| | | | | |

2: DEPARTMENT OF POLITICAL SCIENCE AND PUBLIC ADMINISTRATION

| | | | | |
|----|---------------------|----------------|----|------------|
| 1. | Dr. Emmanuel Mallya | Lecturer | HQ | 0784447697 |
| 2. | Twaha Katabaro | Asst. Lecturer | HQ | 0784485935 |
| 3. | Dr. Miraji Kitigwa | Lecturer | HQ | 0784656533 |
| 4. | Dr. Jacob Lisakafu | Lecturer | HQ | 0768089044 |
| 5. | Furaha Julius | Asst. Lecturer | HQ | 0714782983 |
| 6. | Elias Mseti | Asst. Lecturer | HQ | 0682547842 |
| 7. | Salim Hamad | Asst. Lecturer | HQ | 0717137269 |

| | | | | |
|----|-----------------------|----------------|-----------|------------|
| 8. | Revocatus Bin'omukama | Asst. Lecturer | Shinyanga | 0754204500 |
| 9. | Ahmed Mussa | Asst. Lecturer | Manyara | 0714060617 |

3: DEPARTMENT OF LINGUISTICS AND LITERARY STUDIES

| | | | | |
|-----|---------------------------|-----------------|-------------|--------------|
| 1. | Dr. Mohamed Omary | Lecturer | HQ | 0719 017 254 |
| 2. | Dr. Salma Hamad | Lecturer | Zanzibar | 0778 701 115 |
| 3. | Dr Dunlop Ochieng | Senior Lecturer | HQ | 0684 053 363 |
| 4. | Dr. Zelda Elisifa | Senior Lecturer | HQ | 0754 258 700 |
| 5. | Dr. Hadija Jilala | Senior Lecturer | HQ | 0712 569 555 |
| 6. | Dr. Nasra Habibu | Lecturer | Iringa | 0763 935 995 |
| 7. | Ms. Caroline N. Mugolozzi | Asst. Lecturer | Tabora | 0688 408 856 |
| 8. | Mr. Emmanuel O. Msangi | Asst. Lecturer | HQ | 0767519226 |
| 9. | Mr. Mosi M.Masatu | Asst. Lecturer | HQ | 0754 863 042 |
| 10. | Mr. Lazaro Charles | Asst. Lecturer | Shinyanga | 0717 052 592 |
| 11. | Mr. Yusuph Mwangi | Asst. Lecturer | Lindi | 0768 340 198 |
| 12. | Mr. Faustine D. John | T. Assistant | Kilimanjaro | 0757 149 319 |

4: DEPARTMENT OF HISTORY, PHILOSOPHY AND LIBRARY STUDIES

| | | | | |
|-----|---------------------|--------------------|----------|--------------------|
| 1. | Cosmas Kawonga | Tutorial assistant | Ruvuma | 0753 434797 |
| 2. | Paschal Mheluka | Tutorial assistant | Mwanza | 0757 836806 |
| 3. | Nassor Suleiman | Ass. Lecturer | Pemba | 0777 424767 |
| 4. | Hiltruda Mahudi | Ass. Lecturer | HQ | 0787 042943 |
| 5. | Dennis Konga | Ass. Lecturer | Rukwa | 0763 918456 |
| 6. | Reginald Mwakilambo | Tutorial assistant | Songwe | 0754 408058 |
| 10. | Manoni M. Matunge | Tutorial assistant | Zanzibar | 0769 001023 |
| 11. | Alex Kasisi | Ass.Lecturer | Kagera | 0756 091379 |

DEPARTMENT OF MEDIA AND LIBRARY SERVICES (MLS)

| | | | | |
|-----|----------------|-----------------|----|--------------------|
| 12. | Julieth Msuya | Ass. Lecturer | HQ | 0717 276894 |
| 13. | Nelson Msagati | Lecturer | HQ | 0758 277543 |
| 14. | Ntimi Kasumo | Ass. Lecturer | HQ | 0717 995086 |
| 15. | Dr Henry Mambo | Senior Lecturer | HQ | 0764 695357 |

| | | | | |
|-----|----------------------|--------------------|-----------|-------------|
| 16. | Dr Lilian Isowe | Lecturer | HQ | 0713 441604 |
| 17. | Dr Athuman Samzugui | senior Lecturer | HQ | 0754 605302 |
| 18. | Chausiku Mwinyimbegu | Ass. Lecturer | HQ | 0655 395044 |
| 19. | Mugisha Kafuma | Ass. Lecturer | HQ | 0682 911761 |
| 20. | Azizi Kagugu | Ass. Lecturer | HQ | 0687 687169 |
| 21. | Boniface Mbangala | Ass. Lecturer | Mbeya | 0763 727929 |
| 22. | Frank Charles | Tutorial Librarian | Mwanza | 0719 015481 |
| 23. | Elinahamisa Mgaya | Tutorial Librarian | HQ | 0712 427586 |
| 24. | Kahenga Dachi | Assistant Lecturer | HQ | 0714019628 |
| 25. | Vincent Mpepo | Assistant Lecturer | HQ | 0713235676 |
| 26. | Bujo Ambosisye | Tutorial Assistant | HQ | 0686417627 |
| 27. | Yusuph Manning | Assistant Lecturer | HQ | 0714742485 |
| 28. | Libe Chonya | Assistant Lecturer | Tanga | 0684399997 |
| 29. | Husna Nurdin | Tutorial Assistant | Kinondoni | 0657427343 |

5: DEPARTMENT OF ECONOMICS

| | | | | |
|-----|----------------------|---------------------|----------|------------|
| 1. | Dr. Timothy Lyanga | Lecturer (HOD) | HQ | 0754311041 |
| 2. | Prof. Deus Ngaruko | Associate Professor | HQ | 0764378575 |
| 3. | Dr. Felician Mutasa | Senior Lecturer | HQ | 0713229204 |
| 4. | Dr. Elna Lyamuya | Lecturer | HQ | 0767737422 |
| 5. | Mr. Abdul Kilima | Assistant Lecturer | HQ | 0788513483 |
| 6. | Mr. Henry Tumaini | Assistant Lecturer | HQ | 0762411034 |
| 7. | Mr. Godfrey Gradius | Assistant Lecturer | HQ | 0784802051 |
| 8. | Ms. Zakia Ituja | Assistant Lecturer | Dodoma | 0716959300 |
| 9. | Ms. Janeth Gwimile | Assistant Lecturer | HQ | 0785395454 |
| 10. | Ms. Maria Erasmus | Tutorial Assistant | Ilala | 0755937506 |
| 11. | Harrieth Godwin Mtae | Lecturer | HQ | 0713426964 |
| 12. | Christopher Awinia | Lecturer | HQ | 0784605555 |
| 13. | Emmanuel Nyankweli | Ass. Prof | HQ | 0758177202 |
| 14. | Wambuka Rangi | Lecturer | Morogoro | 0713454296 |
| 15. | Regina Malima | Lecturer | Kahama | 0758516613 |
| 16. | Albert Memba | Lecturer | HQ | 0754770325 |
| 17. | NanziaToroka | Ass. Lecturer | Dodoma | 0629245844 |
| 18. | Noel Matemba | Ass. Lecturer | HQ | 0783333093 |
| 19. | Fidelis Kisusi | Ass. Lecturer | HQ | 0713910438 |
| 20. | Rahma Mohamed | Ass.Lecturer | HQ | 0629934036 |

6. DEPARTMENT OF GEOGRAPHY, HISTORY, TOURISM AND HOSPITALITY SERVICES (GHTH)

| | | | | |
|----|-----------------------------|-------|----|-------------|
| 1. | Prof. Jumanne Daudi Kalwani | Prof. | HQ | 0754 263283 |
|----|-----------------------------|-------|----|-------------|

| | | | | |
|-----|-------------------------------|----------------|-----------|-------------|
| 2. | Prof. Magreth Shimba Bushesha | Prof. | HQ | 0764 713032 |
| 3. | Dr. Emmanuel Patroba Mhache | Lecturer | HQ | 0754 383416 |
| 4. | Dr. Cosmas Mabalika Haule | Lecturer | Singida | 0754 675523 |
| 5. | Dr. Anna Ibrahim Wawa | Lecturer | Dodoma | 0754 430075 |
| 6. | Dr. Reguli Baltazar Mushy | Lecturer | HQ | 0754 685505 |
| 7. | Dr. Elieza Yusuf Musana | Lecturer | Songwe | 0755 756096 |
| 8. | Ms. Ruth Wairimu John | Ass. Lecture | Mwanza | 0756 650132 |
| 9. | Mr. Emmanuel N. Kazuva | Ass. Lecture | HQ | 0716 178180 |
| 10. | Ms. Habiba Abdallah Ally | Ass. Lecture | Kinondoni | 0717 768065 |
| 11. | Dr. Halima Kilungu | Lecturer | HQ | 0755 931975 |
| 12. | Dr. Fredrick Batinoluho | Lecturer | HQ | 0757 700188 |
| 13. | Dr. Theresa Mugobi | Lecturer | HQ | 0757 160110 |
| 14. | Dr. Veronica Nyerere | Lecturer | HQ | 0689 868027 |
| 15. | Mr. Samweli Savunyu | Ass. Lecture | Geita | 0713 350304 |
| 16. | Mr. Reginald Kimario | Tutorial Asst. | Kigoma | 0768 036020 |