

THE OPEN UNIVERSITY OF TANZANIA



FACULTY OF ARTS AND SOCIAL SCIENCES HANDBOOK



**Academic year
2023/2024**

THE OPEN UNIVERSITY OF TANZANIA



FACULTY OF ARTS AND SOCIAL SCIENCES

HANDBOOK

2022/2023

The Open University of Tanzania,
Kawawa Road, Kinondoni Municipality,
P. O. Box 23409
Dar es Salaam
Tanzania.
Office Tel Direct: +255 22 2668835
Fax: +255(0)22-2668759
E-mail: dfass@out.ac.tz
Website: <http://www.out.ac.tz/fass/>

Prologue

Welcome to the Faculty of Arts and Social Sciences at The Open University of Tanzania (OUT). This Handbook has been designed to orient you to the Faculty of Arts and Social Sciences. Hence, it provides a brief introduction to the OUT, outlines important faculty policies and procedures, provides information about resources available, and directs students to the location of other resources. It also contains information on academic development opportunities to help prospective students find and make good choices in their academic careers. Finally, it is a source of information to look back on throughout the year for continuing students.

Comments or suggestions for matters that might be amended or usefully covered in subsequent editions of this booklet would be welcome. Kindly send them to: dfass@out.ac.tz

Preface



Dr. Dunlop Ochieng

Dean, Faculty of Arts and Social Sciences

It is my pleasure to present to you this year's handbook of the Faculty of Arts and Social Sciences (FASS), which among other things, is intended to create awareness of the faculty in all its core areas. The Faculty of Arts and Social Sciences is one of the 5 Faculties of The Open University of Tanzania. It is the oldest at The Open University of Tanzania. It first admitted students in 1994 when the University had its first enrollment. FASS is the largest faculty and prides itself in the wide range of courses and course combinations it offers at both undergraduate and postgraduate levels. Currently, the Faculty is staffed with about 85 permanent academic staff, of whom 5 are professors, 23 are PhD holders, 48 hold master's degrees, and 9 are tutorial assistants. The faculty has six academic departments, namely: the Department of Linguistics and Literary Studies (LLS), the Department of Sociology and Social work (SOSW), the Department of Economics and Community Development (ECED), the Department of Media and Library Studies (MLS), Department of Political Science, Public Administration, History and Philosophy (PSPAHP) and Department of Geography, Tourism and Hospitality Services (GTH). I hope that new as well as continuing students will utilize the information provided in this handbook to work hard in their studies. The handbook will also provide relevant FASS-specific information that complements the main OUT prospectus, which various stakeholders will find most relevant.

Of course, no handbook can cover every possible detail. In this regard, if you have any queries or need clarification on any issue concerning FASS programmes, your first point of contact is the staff in the faculty – who are always happy to help you, in particular, Ms. Zitha Kessy and Ms. Celia Muyinga who are found in Block C, First Floor, Left Wing, and Right Wing, respectively. Each programme also has a coordinator whose job is to deal with queries that cannot be resolved by the Faculty of Arts and Social Sciences in its general sense (their contacts are provided in this handbook). Nonetheless, personal matters should be discussed with your course instructor in person. Be sure to note the e-mail addresses and office hours of both the coordinator for your programme and your course instructor. Let me end my introductory remarks by expressing my gratitude to all individuals who have made the production of this handbook possible. The handbook is available in both hard copies and in an electronic copy on our website (www.out.ac.tz/fass/).

I wish you all the best in the 2022/2023 academic year.

A handwritten signature in blue ink, appearing to read 'D. Ochieng'.

Dr. Dunlop Ochieng

Dean, FASS

Table of Contents

| | |
|------------------------------------------------------------------------------------------|-----------|
| Prologue | i |
| Preface | ii |
| Table of Contents | iii |
| PART ONE: INTRODUCING THE FACULTY OF ARTS AND SOCIAL SCIENCES..... | 1 |
| Background information | 1 |
| FASS Vision | 1 |
| FASS Mission | 1 |
| FASS Organization Structure | 2 |
| Faculty Administration | 3 |
| PART TWO: UNDERGRADUATE AND NON-DEGREE PROGRAMMES | 5 |
| Who's Eligible for Direct Enrolment in FASS Programmes? | 5 |
| How Should a Student Approach the Programme as a Whole? | 5 |
| What about Exams? | 5 |
| Which Code Stands for What, and How do I Choose Subjects? | 5 |
| Bachelor's Degree Programmes | 6 |
| Reading Materials and Library Services | 6 |
| Online Teaching and Interactions | 6 |
| Department of Economics and Community Development (ECED) 7 | |
| Bachelor of Arts in Economics (BA Econ) | 7 |
| Diploma in Monitoring & Evaluation | 7 |
| Development Studies | 8 |
| Bachelor of Community Economic Development (BCED) | 8 |
| Certificate in Monitoring & Evaluation | 10 |
| Department of Linguistics and Literary Studies 10 | |
| Bachelor of Arts in English Language and Linguistics (BA ELL) | 10 |
| Bachelor of Arts in Literature (BALIT) | 11 |
| Bachelor of Arts in Kiswahili and Creative Studies (BA KISW) | 12 |
| Department of Geography, Tourism and Hospitality Services 14 | |
| Bachelor of Arts in Natural Resources Management (BA NRM) | 14 |
| Bachelor of Arts in Population and Development (BAPD) | 15 |
| Bachelor of Arts in Tourism Management (BTM) | 16 |
| Department of Political Science, Public Administration, History and Philosophy 18 | |
| Bachelor of Arts in History (BA HIST) | 18 |
| Bachelor of Arts in Public Administration (BAPA) | 19 |
| Bachelor of Arts in International Relations (BAIR) | 20 |
| Department of Sociology and Social Work 21 | |
| Bachelor of Arts in Sociology (BASO) | 21 |
| Bachelor of Social Work (BSW) | 23 |
| Non-Degree Programme (Certificate and Diploma in Social Work) | 23 |
| NTA Level 4: Semester I | 24 |
| NTA Level 4: Semester II | 24 |
| NTA Level 5: Semester 1 | 24 |
| NTA Level Six: Semester 1 | 25 |
| Department of Media and Library Studies 26 | |
| Bachelor of Arts in Journalism (BA Journalism) | 26 |
| Bachelor of Arts in Mass Communication (BA Mass Comm) | 27 |
| Bachelor of Library and Information Management (BLIM) | 28 |
| PART THREE: POSTGRADUATE PROGRAMMES..... | 31 |
| Master's Degree Programmes | 31 |
| Postgraduate Diploma Programmes | 31 |
| Admission Requirements | 31 |
| Delivery Modes for Master's Programmes by Coursework | 31 |
| Programme Structure and Assessment | 31 |
| Face-to-Face Sessions | 32 |
| Duration of Programmes and Tuition Fees | 32 |
| Master of Arts in Governance and Leadership (MAGL) | 32 |

| | |
|--------------------------------------------------------------------------------------|-----------|
| Master of Arts in International Cooperation and Development (MICD) | 33 |
| Masters of Humanitarian Action, Cooperation and Development (MHACD) | 33 |
| Master of Science in Economics (MSc Econ) | 33 |
| Master of Arts in Monitoring and Evaluation (MA M&E) | 34 |
| Master of Community Economic Development (MCED) | 34 |
| Master of Arts in History (MA History) | 34 |
| Master of Arts in Kiswahili | 35 |
| Master of Arts in Natural Resource Assessment and Management (MA NRAM) | 35 |
| Master in Tourism Planning Management (MTPM) | 36 |
| Master of Social Work (MSW) | 36 |
| Master of Arts in Gender Studies (MA GS) | 36 |
| Postgraduate Diploma in Social Work (PGDSW) | 37 |
| Master of Arts in Mass Communication (MA MC) | 37 |
| Master in Library & Information Management (MLIM) | 37 |
| Doctor of Philosophy Degree (PhD) | 38 |
| How does an aspirant register for a PhD? And for how long does it last? | 38 |
| PART FOUR: LIST OF FASS STAFF | 40 |
| Dean's Office | 40 |
| Faculty Examination Officers | 40 |
| Faculty Planners | 40 |
| Faculty Quality Assurance Coordinator | 40 |
| Faculty Consultancy and Community Outreach | 40 |
| Administrative Staff | 40 |
| Department of Economics and Community Economic Development Staff | 40 |
| Department of Political Science, Public Administration, History and Philosophy Staff | 41 |
| Department of Linguistics and Literary Studies | 42 |
| Department of Geography, Tourism and Hospitality Services | 42 |
| Department of Media Studies and Library Services Staff | 43 |
| Department of Sociology and Social Work | 44 |
| FASS almanack | 46 |
| FASS Programmes Fees | 47 |

Part One

Introducing the Faculty of Arts and Social Sciences

Background information

Tracing its origins back in 1992, the Faculty of Arts and Social Sciences (FASS) deserves a claim to be Open University of Tanzania's oldest faculty. The Open University of Tanzania (OUT) is an open and distance learning institution offering certificates, diplomas, degrees and postgraduate courses. Education delivery is attained through various means of communication such as broadcasting, telecasting, information and communication technologies, correspondence, enhanced face-to-face, seminars and contact programmes. It is a vibrant, lively and supporting intellectual community with a diverse student body committed to academic excellence. The University extends learning access beyond the traditional full-time residential student body, hence making it the first of its kind in East Africa.

The faculty has six academic departments, namely:

1. Department of Linguistics and Literary Studies (LLS)
2. Department of Sociology and Social work (SOSW)
3. Department of Economics and Community Development (ECED)
4. Department of Media and Library Studies (MLS)
5. Department of Political Science, Public Administration, History and Philosophy (PSPAHP)
6. Department of Geography, Tourism and Hospitality Services (GTH)

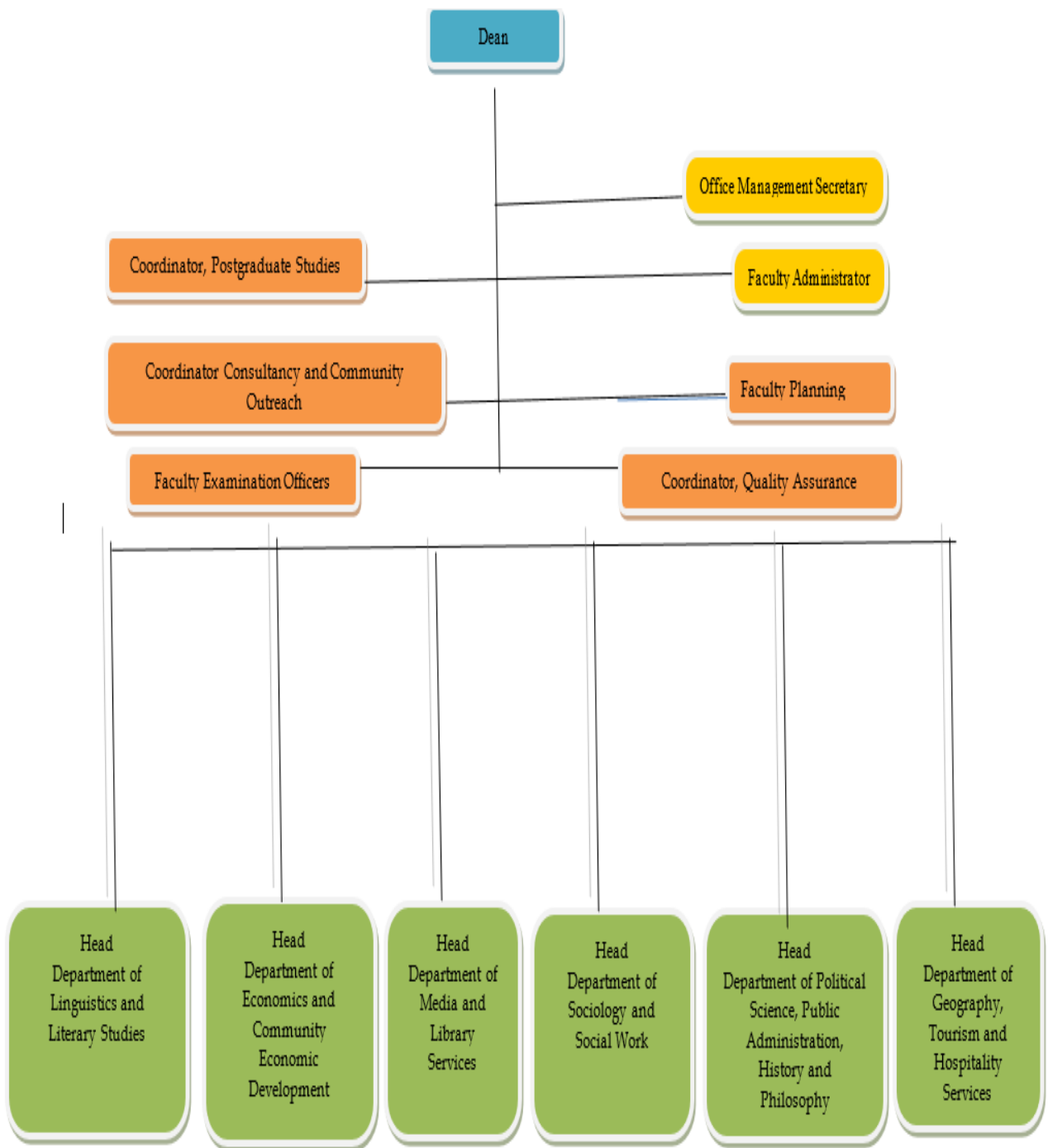
FASS Vision

The Faculty of Arts and Social Sciences embraces the teaching, research, creative activities and service objectives of The Open University of Tanzania. Thus FASS is committed to: providing its students with affordable high quality education in an atmosphere that promotes intellectual vigor, critical inquiry, citizenship and creative decision-making requisites for personal growth and professional success; encouraging exemplary scholarship of teaching, research and service, leading to significant publications and performances; and transforming lives by creating and promoting opportunities for lifelong and flexible learning in order to match up with evolving local and global challenges.

FASS Mission

The aim of FASS is to create and disseminate knowledge through teaching, learning, research and professional practice. It is committed to helping students achieve the highest academic standards. The faculty is dedicated to the fundamental principle that the role of higher education is to develop and nurture a creative, civil and life-sustaining society. Hence, its programmes promote civic engagement, examine our world and envision future possibilities.

FASS Organization Structure



Faculty Administration

Dean's office

Dean: **Dr. Dunlop Ochieng**

Direct Line: +255 22 2668835

Mobile: +255 684053363

E-mail: dunlop.ochieng@out.ac.tz

Coordinator of FASS Postgraduate Studies: **Dr. Ladislaus Batinoluho**

Mobile: +0714700188; E-mail: ladislaus.batinoluho@out.ac.tz

Faculty Examination Officer

1. Mr. Alexander Ndibalema

Mobile: +255717937935; E-mail: alexander.ndibalema@out.ac.tz

2. Mr. Vincent Mpepo

Mobile: +255755782983; E-mail: vincent.mpepo.julius@out.ac.tz

Faculty Planner: **Mr. Manning Yusuph**

Mobile: +255714742485; Email: manning.yusuph@out.ac.tz

Faculty Quality Assurance Coordinator: **Ms. Celia Muyinga**

Mobile: +255759803818; Email: celia.muyinga@out.ac.tz

Faculty Consultancy and Community Outreach Coordinator: **Dr. Theresia Mugobi**

Mobile: +255757160110; Email: theresia.mugobi@out.ac.tz

Faculty Administrator: **Ms. Nuru Abdallah**

Mobile: +255758372355; E-mail: nuru.abdallah@out.ac.tz

Faculty Office Management Secretary: **Ms. Zitha Kessy**

Mobile: +255719068385; E-mail: zitha.kessy@out.ac.tz

Heads of Departments

| Dept/Centre | Name | Email | Mobile |
|-----------------------------------------------------------------------------------------|------------------------|--------------------------------------------------------------------------------|------------|
| Dean | Dr. Dunlop Ochieng | dunlop.ochieng@out.ac.tz | 0684053363 |
| Department of Linguistics and Literary Studies (LLS) | Dr. Zelda Elisifa | zelda.elisifa@out.ac.tz | 0623134276 |
| Department of Sociology and Social work (SOSW) | Dr. Mariana Makuu | mariana.makuu@out.ac.tz | 0716211283 |
| Department of Economics and Community Development (ECED) | Dr. Emmanuel Nyankweli | emmanuel.nyankweli@out.ac.tz | 0758177202 |
| Department of Media and Library Studies (MLS) | Dr. Henry Mambo | henry.mambo@out.ac.tz | 0754770325 |
| Department of Political Science, Public Administration, History and Philosophy (PSPAHP) | Dr. Jacob Lisakafu | jacob.lisakafu@out.ac.tz | 0768089044 |
| Department of Geography, Tourism and Hospitality Services (GTH) | Dr. Halima Kilungu | halima.kilungu@out.ac.tz | 0755931975 |

Coordinators of Academic Programmes

| S/N | Department | Programme | Coordinator | Phone No./mail |
|-----|---------------------------|--------------------------------------|---------------------|----------------|
| 1. | Media and Library Studies | Library Studies | Mr. Aziz Kagugu | 0762512521 |
| 2. | Sociology and Social Work | Bachelor of Social Work (BSW) | Alexander Ndibalema | 0752 605332 |
| | | Bachelor of Arts in Sociology (BASO) | Dr. Straton Ruhinda | 0784697834 |

| | | | | |
|------|------------------------------------------------------------------------------------------|-------------------------------------------------------------------|------------------------------------------------|---------------------------|
| | | NTA Level 4,5and 6 (Certificate and Diploma in Social Work) | Dr. Fauzia Mohamed | 0782 374953 |
| 3. | Linguistic and Literacy Studies | Linguistic courses | Mr. Moshi Masatu | 0687885849 |
| | | Literature courses | Ms. Caroline Mugolozzi Mr. Yohana Makeja | 0656223661 0785544044 |
| | | Kiswahili | Ms. Theresia Mbogo Dr. Hadija Jilala | 0787928387 0712569555 |
| | | MA Kiswahili | Dr. Omary Maguo Mr. Emmanuel Msangi | 078 5259095 0739519226 |
| 4. | Geography, Tourism and Hospitality Services | Bachelor of Tourism Management | Dr. Veronica Nyerere | 0689 868027 |
| | | Non-degree Programme Tourism | Dr. Thereza Mugobi | 0757 160110 |
| | | Bachelor of Natural Resources Management | Dr. Ruth John and Habiba Ally | 0756650132 |
| | | Bachelor Population and Development | Dr. Anna Wawa | 0754 430075 |
| 5. | Economics and Community Development (ECED) | M.Sc. Economics | Mr. Abdul Kilima | 0788513483 |
| | | MCED | Ms. Janeth Gwimile | 0755937506 |
| | | M&E | Ms. Janeth Gwimile | 0785395454 |
| | | | Mr. Henry Tumaini | 0762411034 |
| | | | Mr. Abdul Kilima | 0788513483 |
| | | B.A - Economics | Mr. Godfrey Gadius | 0754067357 |
| | | Diploma in M&E | Ms. Zakia Ituja | 0716959300 |
| | | Certificate in M&E | Ms. Zakia Ituja | 0716959300 |
| BCED | Mr. Stephen Akyoo | | | |
| | Ms. Nanzia Toroka | 0629245844 | | |
| 6. | Political Science, Public Administration, History and Philosophy (PSPAHP) | BAPA BAIR | Ahmed Mussa Revocatus Bin'Omukama | 0714060617 0754204500 |

Part Two

Undergraduate and Non-degree Programmes

Who's Eligible for Direct Enrolment in FASS Programmes?

Those who have the following qualifications then are a suitable candidate to undertake our various undergraduate degree programmes:

- Two principal passes the Advanced Certificate of Secondary Education Examination (A.C.S.E.E.).
- Diploma holder with 3.0 GPA. The diploma must be of duration of two years period.
- An applicant who holds a one-year Foundation course from The Open University of Tanzania

How Should a Student Approach the Programme as a Whole?

You need to get to know as much as you can about your programme. You can find out through your Directors of Regional Centre (DRCs), the FASS website, your course outlines, or your instructors how your programme works. Do you need a certain grade to proceed to the following year? Does your choice of courses fit into what you might want to do later in the programme? When are the exams and how do they work? Being familiar with your programme from the beginning will save you time and worries later.

What about Exams?

Finding out the examination format, assessment criteria and when and where examinations take place might not be the first things you want to look into when you have just joined and are excited about learning more about your subjects in the first place. But it can be helpful to bear this information in mind. Have a look at past exam papers, which are in the hands of continuing students, to get an idea of what will be expected of you. Inquiring about previous examination reports can be even more revealing, as they will tell you exactly what students did well and what went wrong in the past. To register online for examinations, you have to visit the OUT webpage at: www.out.ac.tz. The examination regulations apply from the first Level to the final Level of the undergraduate examinations in the faculty. Further examination regulation details are available online in the OUT Prospectus, which can be accessed at: <http://www.out.ac.tz/files/importInfo/prospectus%2019-2020.pdf>.

Which Code Stands for What, and How do I Choose Subjects?

Each subject starts with an "O" which stands for The Open University of Tanzania. It is followed by the subject alphabet and code numbers. The code numbers used will be in the series of 100 for Part One, 200 for Part Two and 300 for Part Three.

Following are the subject codes:

| | | |
|------|---|---------------------------------------------|
| CED | - | Community Economic Development |
| ODS | - | Development Studies |
| OEC | - | Economics |
| OGE | - | Geography |
| OPD | - | Human Population and Development |
| OIR | - | International Relations |
| OLL | - | English Language and linguistics |
| ORM | - | Natural Resource Assessment and Management |
| OHI | - | History |
| OLL | - | English Language and Linguistics |
| OLT | - | Literature |
| OLM | - | Library and Information Management |
| OPR | - | Philosophy and Religious studies |
| OSW | - | Kiswahili |
| OPA | - | Public Administration |
| OPS | - | Political Science and Public Administration |
| OTS | - | Tourism Studies |
| OTM | - | Tourism Management |
| OSP | - | Social Work Studies |
| OSS | - | Sociology and Social Work Studies |
| OSPS | - | Social Psychology |
| OJO | - | Journalism |

| | | |
|-----|---|--------------------|
| OMC | - | Mass Communication |
| FRA | - | French |

The choice of course combination for The Open University of Tanzania Degree programme shall be approved by designated officers of the University. Note that any change in any subject combination will be made only in consultation with the designated officers of The Open University of Tanzania. Such changes will only be allowed before or during the first face-to-face session of the course and in exceptional cases, only in order to qualify for the award of a degree; a student is normally required to complete a minimum of 36 to 40 course units, depending on specific programme requirements. Further details about our programmes are also available in the OUT Prospectus at: <http://www.out.ac.tz/files/importInfo/prospectus%2018-2019.pdf>.

Bachelor's Degree Programmes

At the undergraduate level, FASS currently offers 17 programmes through the Open and Distance Learning (ODL) mode of delivery. These include:

- Bachelor of Arts in Tourism Management
- Bachelor of Arts in Sociology
- Bachelor of Social Work
- Bachelor of Arts in Journalism
- Bachelor of Arts in Mass Communication
- Bachelor of Community Economic Development
- Bachelor of Arts in Economics
- Bachelor of Arts in Natural Resource Management
- Bachelor of Arts in Population and Development
- Bachelor of Arts in Literature
- Bachelor of Arts in Kiswahili and Creative Studies
- Bachelor of Arts in English Language and Linguistics
- Bachelor of Library Information Management
- Bachelor of Arts in History and Cultural Heritage
- Bachelor of Arts in Public Administration
- Bachelor of Arts in International Relations

Reading Materials and Library Services

Studying for the degree requires students to engage with a mixture of printed and electronic resources. Some of these may be originally printed materials, now available to in electronic format – for example, downloads of journal articles or books. However, the degree is not simply e-learning in the sense that all the learning and activities take place as you sit at your computer. You will also be expected to visit libraries to research topics, and to obtain books, either through the university library or through purchasing your own copy of key texts. In view of the foregoing, the OUT Library offers state-of-the-art technology, vast collection of research and reading materials and specialized services. The main Library lies at the heart of the OUT Headquarters, while mini libraries are set in locations convenient to the staff and students in the regional centres. The library houses more than 200,000 printed volumes, while its virtual presence consists of bibliographic and full-text databases, online theses/ dissertations, e-books, open courseware, e-journals and a growing institutional digital repository, making it a gateway to a wealth of research and learning materials. It also makes an available online catalog of books available in the main library and in the regional centers. For more information about the library hours and services and access to the library resources, both on and off-campus, visit the OUT-Library website at: www.out.ac.tz/library/.

Online Teaching and Interactions

We are progressively making use of a Virtual Learning Environment (VLE) called MOODLE (Modular Object-Oriented Dynamic Learning Environment). To access MOODLE platform, you will need to log into the relevant portal with your username and password. MOODLE is used for several purposes, such as downloading the relevant documents you will need as you study and keeping up with advancements in information and communication technology. You can also use it to contact other distance learners through the student forum. The instructors will be developing and updating the MOODLE resources as

an on-going part of the programme development. Zoom lectures are currently delivered for each knowledge area. Students are encouraged to attend online lecture sessions. Links for scheduled zoom lectures will be provided on the MOODLE platform.

Department of Economics and Community Development (ECED)

ECED comprises two departments, namely Economics and Community Economic Development. The Economics department currently offers a BA general degree, while the Community Economic Development offers courses in development studies. Starting this academic year, CECED is offering two new undergraduate programs, namely BA Economics (BA ECON) and Bachelor of Community Economic Development (BCED). The details of the programme are as given below:

Bachelor of Arts in Economics (BA Econ)

The main objective of the BA ECON programme is to enable students to demonstrate and develop the ability to critically evaluate and apply theories and techniques of economics.

BA Econ Programme Structure

A student is required to complete **36 units** to qualify for a BA in Economics.

Level I

| Code | Course Title |
|--------------------|-------------------------------------------------|
| OEC 130 | History of Economic Thought |
| OEC 131 | Introduction to Microeconomics |
| OEC 132 | Introduction to Macroeconomics |
| OEC 133 | Basic mathematics and statistics for Economists |
| OEC 134 | Social science Research methods |
| OFC 017 | Communication Skills |
| OCP 100 | Introduction to Computers |
| Total Units | |

Level II

| Code | Course Title |
|--------------------|-------------------------------------|
| OEC 230 | Intermediate Microeconomics |
| OEC 231 | Intermediate Macroeconomics |
| OEC 232 | Development Economics |
| OEC 233 | Quantitative methods for Economists |
| OEC 234 | Econometrics |
| OEC 235 | Corporate Finance and Investments |
| Total Units | |

Level III

| Code | Course Title |
|--------------------|-------------------------|
| OEC 330 | Monetary Economics |
| OEC 331 | International Economics |
| OEC 332 | Public Economics |
| OEC 333 | Industrial Economics |
| OEC 334 | Labour Economics |
| OEC 335 | Agricultural Economics |
| Total Units | |

NOTE: Students must select at least ONE (1) elective course in level III to complete the total units required to graduate.

Diploma in Monitoring & Evaluation

The main objective of the Diploma in M&E programme is to provide skills for understanding M&E systems, effective leading and management of evaluation teams in conducting data collection fieldwork

Semester I Modules

| S/N | Module Code | Module Title | Class | Credits | |
|----------------------|-------------|-------------------------------------------------|-------|------------|--|
| 1 | OEC011 | Fundamentals of Result based project management | C | 20 | |
| 2 | OEC012 | M&E Principles and Approaches | C | 20 | |
| 3 | OEC013 | M&E Planning and Implementation | C | 20 | |
| 4 | OFP020 | Computer Skills | C | 20 | |
| 5 | OEC014 | Applied Mathematics for Project | C | 20 | |
| Total credits | | | | 100 | |

Semester II Modules

| S/N | Module Code | Module Title | Class | Credits | |
|----------------------|-------------|------------------------------------|-------|------------|--|
| 1 | OEC021 | Impact Evaluation Methods | C | 20 | |
| 2 | OEC022 | Field Protocol and Report Writing | C | 20 | |
| 3 | OEC023 | M&E in Public Sector | C | 20 | |
| 4 | OEC024 | Evaluation Criteria and Techniques | C | 20 | |
| 5 | OEC025 | Value for Money in M&E | C | 20 | |
| | OEC026 | M&E Data Management and Systems | C | 20 | |
| | OEC199 | Field Practical Attachment | C | 40 | |
| Total credits | | | | 160 | |

Key: F=Fundamental
C= Core

Development Studies

Development Studies courses are taken by all University students as optional courses. Students can take either's 202A Society, Technology and Environment (for the Humanities Bias Group) or ODS 202B Environment, Technology and Development (for the science bias Group). Students in the Faculty of Arts and Social Sciences, Faculty of Education and Faculty of Law comprise the Humanities Bias group, while those in the Faculty of Science, Technology and Environmental Studies constitute the Science bias group. The course structure is as indicated below

Level One

| Course Code | Course Title |
|--------------|--------------------------------------------|
| ODS 101 A: | Concepts/Theories of Social Development |
| ODS 101 B: | Political Economy |
| ODS 101 C: | Political and Social Development in Africa |
| ODS 102 A: * | Issues in Development |
| ODS 102 B: * | Social Services and Development |
| OFC 017: | Communication Skills |
| OCP 100: | Introduction to Computer |

Level Two

| Course Code | Course Title |
|--------------|----------------------------------------------------------------------------------|
| ODS 201 A: * | Tanzania's Development Experience |
| ODS 201 B: * | Alternative Development strategies |
| ODS 202 A: * | Society, Technology and Environment (For Humanities only) |
| ODS 202 B: | Environment, Technology and Development (For Natural Sciences and Technology) |

* Courses not offered in this academic year.

Bachelor of Community Economic Development (BCED)

Community Economic Development (CED) is a participatory process by which communities initiate and generate their own solutions to economic problems leading to positive concrete changes in communities through creating employment; stabilizing local economies; reducing poverty; contributing to the health of the natural environment; building local resources and capacities; and increasing community control. CED is understood in its widest sense as an emerging, diverse field of practice accompanied by analysis of the social-economic context. The BCED programme seeks to provide a unique opportunity to students who wish to develop their career in CED

Objectives of the Programme

The main objectives of the Bachelor of Community Economic Development are to:

- train Community Economic Development practitioners to work in the government, private sector and with communities.
- generate knowledge and information that will permit leaders in government, private sector and in communities to make informed decisions.
- encourage a high degree of local participation in making well informed economic choices.
- assist in building sustainable institutions that will assure equitable sharing of the benefits of those choices.
- build capacity among practitioners working with communities.
- equip students with sufficient knowledge, skills and attitude that will enable them to work competently as economists in the government, international organizations, financial sector, business sector, etc.

Duration

The course shall be completed at least within three years in all modes. However, a student can extend to a maximum of up to eight years for a distance mode.

Assessment Regulations

Students are assessed by a combination of timed tests and final examinations. The timed test comprises 30% while the final examination carries 70% making a total of 100%. The formal examinations and timed tests allow sufficient assessment and feedback to maintain intellectual rigour and provide an opportunity for individual improvement.

Structure

The programme structure has three levels. Each level is equivalent to two academic years, assuming an average learner. Details of the courses at each level are provided in the table below:

| Code | Title of the Course |
|---------|-------------------------------------------------------|
| CED 101 | Principles of CED |
| CED 102 | Economics for CED |
| OAF111 | Principles of Accounting |
| OEC 133 | Mathematics and Statistics for Economists |
| CED 103 | SMEs and Development |
| OCP 100 | Introduction to Computers |
| | |
| CED 201 | Microfinance Management |
| CED 202 | Resource Mobilization and Management for CED Projects |
| CED 203 | Poverty Analysis and Intervention |
| CED 204 | CED Project Management |
| CED 205 | Organizational Management for CED |
| OME 312 | Entrepreneurship and Business Planning |
| | |
| CED 301 | Project Monitoring and Evaluation |
| CED 302 | Community Needs Assessment |
| CED 303 | Sustainable Responses to Environmental problems |
| CED 304 | Development as a tool for Conflict Resolution * |
| OEC 305 | Development Economics* |

| | |
|---------|------------------------------------------------|
| CED 305 | Rural Livelihoods and Sustainable Development* |
| CED 306 | Gender Issues in CED* |

*Candidate to select at least TWO of these courses

Award

Upon completion and passing of all the courses, Community Needs Assessment (CNA) and field practical; a student will be awarded a Bachelor of Community Economic Development degree of The Open University of Tanzania.

Programme Delivery

The programme will be delivered in Open Distance Learning Mode (ODL) as well as face-to-face evening mode. The academic year starts in September/October with an orientation week. During orientation, students will be provided with course outlines, study manuals and other guiding materials.

Certificate in Monitoring & Evaluation

The aim of the Certificate course is to produce a cadre of technicians who can support M&E activities being undertaken by public/private sector organizations, local government, NGOs, individual sector experts, and practitioners. The course structure is as indicated below.

| Module Code | Module Title | Status | TCU Credits |
|-------------|---------------------------------------------------------|------------|-------------|
| OEC 001 | Introduction To Project Design and Management | Core | 20 |
| OEC 002 | Introduction to M&E Framework | Core | 20 |
| OEC 003 | Introduction To Research Methods and Statistics For M&E | Core | 20 |
| OEC 004 | Preparation For Field Protocol | Core | 20 |
| OEC 005 | Group Project | Core | 40 |
| OFP 017 | Communication Skills | Compulsory | 20 |
| | Total Credits | | 140 |

Department of Linguistics and Literary Studies

The Department of Linguistics and Literary Studies deals exclusively with language-oriented courses. To accomplish this purpose, the department has the following bachelor programs: Bachelor of English Language and Linguistics (BA ELL), Bachelor of Kiswahili and Creative Studies (BA KISW) and Bachelor of Arts in Literature (BALIT).

Bachelor of Arts in English Language and Linguistics (BA ELL)

This programme aims to introduce students to the nature, structure, and uses of language and develop an understanding of descriptive and applied linguistic knowledge. Candidates are required to take at least 36 units.

Programme Organization

Level I The candidate shall take all core courses and one elective, making a total of 12 units

| | Course name |
|----------|---------------------------------------------|
| OLL 131 | Introduction to Language and Linguistics |
| OLL 132 | English Structure |
| OLL 133* | Introduction to Functional Grammar |
| OLL 134 | Language in Contact |
| OLL 135 | Language Acquisition Theories |
| OLL 136 | History and Development of English Language |
| OFC 017 | Communication Skills |
| OCP 100 | Introduction to Computer |

Level II The candidate shall take all core courses and one elective, making a total of 12 units

| Course code | Course name |
|-------------|----------------------------------------|
| OLL 231 | Discourse Analysis |
| OLL 232 | Morphology |
| OLL 233 | Introduction to Syntax |
| OLL 234 | Historical and Comparative Linguistics |
| OLL 235 | Phonetics and Phonology |
| OLL 236 | Applied Linguistics |
| OLL 237 | Translation Theory and Practice |
| OLL 238 | Lexicography |

Level III The candidate shall take all core courses and one elective, making a total of 12 units

| Course code | Course name |
|-------------|----------------------------------|
| OLL 331 | Contemporary Linguistic Theories |
| OLL 332N | Language and Gender |
| OLL 333N | Sociolinguistics |
| OLL 334 | Research Methodology |
| OLL 335N | Semantics and Pragmatics |
| OLL 336N | Advanced English Syntax |
| | |

Bachelor of Arts in Literature (BALIT)

The Bachelor of Literature Programme aims to provide a basic literature knowledge foundation and training in academic research and creative writing. It also prepares students for careers in academia, the general private sector, or publishing enterprises (or even to establish their own). It will enable students to contribute to research and literary output advancement.

Level 1

The Candidate shall study all core courses and one elective, making a total of 12 units

| Course Codes | Course Title | TCU Credits | OUT Units | Status |
|----------------|------------------------------------------------|-------------|-----------|----------|
| OLT 131 | Literary Theory and Criticism | 20 | 2 | Core |
| OLT 132 | Studies In African Literatures | 20 | 2 | Core |
| OLT 133 | Language and Literature | 20 | 2 | Core |
| OFC 017 | Communication Skills | 10 | 1 | Core |
| OCP 100 | Introduction to Computer | 10 | 1 | Core |
| OLT 134 | Creative Writing for Fiction, Drama and Poetry | 20 | 2 | Elective |
| OLT 135 | Introduction to Drama | 20 | 2 | Elective |
| OLT 136 | African Women Writers | 20 | 2 | Elective |

Level 2

The Candidate shall study all core courses and one elective making, making a total of 12 units

| Course Codes | Course Title | TCU Credits | OUT Units | Status |
|--------------|-------------------------------------------|-------------|-----------|----------|
| OLT 231 | Literary Stylistics | 20 | 2 | Core |
| OLT 232 | Poetry | 20 | 2 | Core |
| OLT 233 | Folklore and Oral Literature | 20 | 2 | Core |
| OLT 234 | Research Methodology | 20 | 2 | Core |
| OLT 235 | Rise of the Novel | 20 | 2 | Core |
| OLT 236 | Contemporary Trends in African Literature | 20 | 2 | Elective |
| OLT 237 | Introduction to Film Studies | 20 | 2 | Elective |

Level 3

The Candidate shall study all core courses and two electives making, making a total of 12 units

| Course Codes | Course Title | TCU Credits | OUT Units | Status |
|--------------|--------------------------------|-------------|-----------|----------|
| OLT 331 | Comparative Literature | 20 | 2 | Core |
| OLT 332 | African American Literature | 20 | 2 | Core |
| OLT 333 | Studies in European Literature | 20 | 2 | Core |
| OLT 334 | Gender and Literature | 20 | 2 | Core |
| OLT 335 | The Short Story | 20 | 2 | Elective |
| OLT 336 | Research Project | 20 | 2 | Elective |
| OLT 325 | Creative Writing Project | 20 | 2 | Elective |

Bachelor of Arts in Kiswahili and Creative Studies (BA KISW)

The Kiswahili and Creative Studies programme is divided into THREE levels: 100 series, 200 series and 300 series. At level 100 series, the courses acquaint students with both the background and other major linguistics and literary theories and the application of these theories in critically analyzing Kiswahili language and literary works. The two remaining Levels (200 -300 series) of the programme provide instruction on a more advanced level in a broad range of core subjects. They therefore enable a student to choose from a range of optional courses which might form the basis of specialization in their future career and studies. The programme is concluded by testing students' research skills. Those who scored B+ in research methodology (OSW 225) will be allowed to demonstrate their acquaintance with research methods and methodology by registering OSW 336 Research Project in Kiswahili. All candidates are required to take at least 36 OUT units which is equivalent to 360 TCU credits, each unit covering content materials equivalent to thirty-five one-hour lecture materials.

Programme Organization

Level I: The candidate shall take all core courses, making a total of 10 units

| Course Codes | Course Name |
|--------------|-----------------------------------------|
| OSW131 | Utangulizi wa Lugha na Isimu |
| OSW 132 | Historia ya Kiswahili na Lahaja zake |
| OSW133 | Fasihi ya Kiswahili Nadharia na Uhakiki |
| OSW134 | Tafsiri: Nadharia na Mbinu |
| OCP 100 | Introduction to Computer |
| OFC 017 | Communication Skills |

Level II: The candidate shall take all core courses and one elective making 14 units

| Course Codes | Course Name |
|--------------|----------------------------------------------------|
| OSW 231 | Sarufi ya Kiswahili na Sintaksia |
| OSW 232 | Fonetiki na Fonolojia ya Kiswahili |
| OSW 233 | Mofolojia ya Kiswahili |
| OSW 234 | Fasihi Simulizi |
| OSW 235 | Mbinu za Utafiti katika Taaluma za Lugha na Fasihi |
| OSW 236 | Semantikia ya Kiswahili |
| OSW 237 | Ubunifu na Uandishi wa Skripti za Filamu |
| OSW 238 | Leksikografia |
| OSW 239 | Fasihi Linganishi |

Level III: The candidate shall take all core courses and 2 electives making a total of 12 units

| Course Codes | Course Name |
|--------------|-------------------------------|
| OSW331 | Riwaya ya Kiswahili |
| OSW332 | Tamthilia ya Kiswahili |
| OSW333 | Ushairi wa Kiswahili |
| OSW334 | Uhakiki wa Filamu |
| OSW335 | Isimujamii |
| OSW336 | Research Project in Kiswahili |
| OSW337 | Elimumitindo |

BA Education Programme

The department of Linguistics and Literary Studies will continue to teach language related core courses selected by BA ED not exceeding 16 units at all 3 levels.

Linguistics

Level 1

Students taking Linguistics as a major subject must study all linguistics courses from this level, whereas those who take the course as a minor subject should take OLL 131 and 132 only.

Level 2

B.A Education taking linguistics as a minor subject may take three core courses from the second year list one of which must be OLL 236. B.A Education students majoring in linguistics must take all core courses in the second year list one of which must be OLL 236.

Level 3

All B.A Education students majoring in linguistics must take ALL core courses in the third year. However, the project will be done by students whose performance was above a 'B' grade in the second year. Those who did not attain an average of 'B' in the second year will have to choose two units from any elective course in the third-year list.

| Course Codes | Course Title |
|----------------|-----------------------------------------------------|
| OLT 131 | Literary Theory and Criticism |
| OLT 132 | Studies In African Literatures |
| OFC 017 | Communication Skills |
| OCP 100 | Introduction to Computer |
| Level 2 | |
| OLT 221 | Oral Literature I |
| OLT 222 | Literary Stylistics |
| Level 3 | |
| OLT 321 | European Literature |
| OLT 322 | African American Literature |
| OLT 323 | Creative Writing |
| OLT 324 | Dramatic – Theatrical Studies |
| OLT 325 | Oral Literature II (Research project on literature) |

Kiswahili

1. *B. A. General* Students studying Kiswahili as a major subject will be required to study all the first-year units, and six units in the second year and four units in the third year of study.
2. *B. A. General* Students taking Kiswahili as a minor subject will be required to take all units in the first-year units, 6 units in the second year and 4 units in the third year.
3. *B. A. with Education* Students taking Kiswahili as a major subject will be required to study 4 core units in the first year, six in the second year and six in the third year.
4. *B. A. with Education* Students taking Kiswahili as a minor subject will have to take all core units, 4 in the first year, 2 in the second year and 2 in the third year.

Kiswahili

1. *B. A. General* Students studying Kiswahili as a major subject will be required to study all the first-year units, six units in the second year and four units in the third year of study.
2. *B. A. General* Students taking Kiswahili as a minor subject will be required to take all units in the first-year units, 6 units in the second year and 4 units in the third year.
3. *B. A. with Education* Students taking Kiswahili as a major subject will be required to study 4 core units in the first year, six in the second year and six in the third year.

4. B. A. with Education Students taking Kiswahili as a minor subject will have to take all core units, 4 in the first year, 2 in the second year and 2 in the third year.

Level 1

| Course Codes | Course Title |
|--------------|-----------------------------------------|
| OSW 131 | Utangulizi wa Lugha na Isimu |
| OSW 132 | Historia ya Kiswahili na Lahaja zake |
| OSW 133 | Fasihi ya Kiswahili Nadharia na Uhakiki |
| OFC 017 | Comunicación Skills |
| OCP 100 | Introduction to Computer |

Level 2

| Course Codes | Course Title |
|--------------|------------------------------------|
| OSW 231 | Sarufi ya Kiswahili na Sintaksia |
| OSW 232 | Fonetiki na Fonolojia ya Kiswahili |
| OSW 233 | Mofolojia ya Kiswahili |
| OSW 234 | Fasihi Simulizi |
| OSW 225* | Isimu Tumizi |
| OSW 333 | Ushairi wa Kiswahili |
| OSW 331 | Riwaya ya Kiswahili |
| OSW 332 | Tamthiliya ya Kiswahili |

Level 3

| Course Codes | Course Title |
|--------------|---------------------------------------------------------------------------|
| OSW 335 | Isimu Jamii |
| OSW 322 | Kunga za Tafsiri na Semantikia kwenye kozi za B. A Kisw sijaiona hii kozi |
| OSW 323 | Ubunifu Kwenye kozi za B.A Kisw sijaiona hii Kozi pia |
| OSW 336 | Projekti ya Utafiti katika Kiswahili |

*Courses not offered in this academic year.

Department of Geography, Tourism and Hospitality Services

The Department of Geography has three main undergraduate programmes: Bachelor of Arts in Natural Resource Management BA (NRM); Bachelor of Arts in Population and Development BA (PD) and Bachelor of Arts in Tourism Management. They are paralleled by old programmes which are offered by the Department in collaboration with education programs

Bachelor of Arts in Natural Resources Management (BA NRM)

The Bachelor of Arts in Natural Resources Management (BA.NRM) focuses on the uses and development of resources, coupled with practical field experience, knowledge and skills necessary for meeting the challenges of sustainable use of natural resources. At the end of the programme, learners will be expected to have acquired competences in poverty analysis and social development planning. Ultimately the programme will produce competent professionals who can identify, plan and monitor the exploitation of natural resources.

Programme Structure

It consists of 14 core courses and four electives. Each course (core and elective) is 2 units. There are 2 compulsory cross-cutting courses on offer (computer and communication skills), each with a 1-unit weight. A student is required to complete 36 units to qualify for a BA in Natural Resources Management degree. This shall be made of all core courses at each level, whereby a student shall be required to accomplish a minimum of 12 units at each level. For example, in level 1 a student will be required to undertake all 12 units from the core courses plus 2 units from the compulsory courses as indicated in this Handbook. In level 2, students shall be required to accomplish all 5 core courses, which make up 10 units and select a minimum of one course from the elective COURSES. In level 3, students shall be required to do all 6 core courses, which make 12 units

Level 1 (All Courses)

| Course Codes | Course Title |
|--------------|-------------------------------------------------------|
| ORM 101 | Background to Natural Resources |
| ORM 102 | Introduction to Population, Resources and Environment |
| ORM 103 | Introduction to Geographic Techniques |
| ORM 104 | Climatology |
| ORM 105 | Introduction to Human Geography |
| ORM 106 | Gender and Natural Resource Management |
| OFC 017 | Communication Skills* |
| OCP 100 | Introduction to Computer* |
| | Total |

* 2 compulsory courses @ 1 unit = 2 units included

Level 2 (Five Core and One Elective)

| Course Codes | Course Title |
|--------------|--------------------------------------------------------|
| ORM 201 | Minerals and Energy Resources |
| ORM 202 | Remote Sensing and Geographic Information Systems |
| ORM 203 | Social Research Methods in Geography |
| ORM 204 | Field Practical |
| ORM 205 | Environmental hazards and natural disaster management* |
| ORM 206 | Population and Poverty Studies* |
| ORM 207 | Urban Planning and Management* |
| ORM 208 | Principle of Ecology |

Elective courses

Level 3 (All courses)

| Course Codes | Course Title |
|--------------|------------------------------------------------------------|
| ORM 301 | Environmental Economics |
| ORM 302 | Policy Issues in Natural Resources |
| ORM 303 | Environmental Impact Assessment |
| ORM 304 | Climate Variability and Environmental Resources Management |
| ORM 305 | Biodiversity Monitoring Conservation and Management |
| ORM 306 | Land Evaluation and Land Use Planning |
| | Total |

Bachelor of Arts in Population and Development (BAPD)

The Bachelor of Arts in Population and Development aims at equipping graduate students with demographic, social, economic and geographic analytical tools and their applications in resources in planning and use for sustainable development. At the end of the programme, learners will be expected to have acquired competences in determining the relationship between population and other broad parameters, such as internal and international immigration, poverty, environment and global warming, which are essential for development planning. The programme is designed to produce competent professionals in demography, population and development planning.

Programme Structure

BA (PD) consists of 16 core courses and 4 electives. Each course (core and elective) has a 2 units' weight. In addition, there are 2 compulsory cross-cutting courses on offer (computer and communication skills), each with a 1-unit weight.

This shall be made of all core courses at each level, whereby at each level, a student shall be required to accomplish a minimum of 12 units. For example, in level 1 and level 2, students will be required to undertake all courses as indicated in this Handbook. In level 3, students shall be required to accomplish all the 7 core courses, which make 14 units and select a minimum of 2 elective courses.

Programme Organization

Level 1 (All Courses)

| Course Codes | Course Title |
|--------------|-------------------------------------------------------|
| OPD 101 | Introduction to Population Studies |
| OPD 102 | Introduction to Family Life Education |
| OPD 103 | Introduction to Reproductive Health and Sexual Health |
| OPD 104 | Medical Geography |
| OCP 100 | Introduction to Computer |
| OFC 017 | Communication Skills |
| | One elective course |
| | Total |

Level 2 (All Courses)

| Course Code | Course Title |
|-------------|----------------------------------|
| OPD 201 | Dynamics of Population Structure |
| OPD 202 | Gender and Development |
| OPD 203 | Basic Demographic Methods |
| OEC 134 | Social Science Research Method |
| OPD 209 | Field Practical |
| | |
| | Total |

Level 3 (Seven Core Courses and at Least One Elective)

| Course Code | Course Title |
|-------------|----------------------------------------------|
| OPD 301 | Gender, Health and Family Planning |
| OPD 302 | GIS and Population Studies |
| OPD 303 | Population, Policy and Development |
| OPD 304 | Population, Migration and Development |
| OPD 305 | Family Resources Management |
| OPD 306 | Urban Systems, Planning and Management* |
| OPD 307 | Population, Environment and Development |
| OPD 308 | Nutrition for Health* |
| OPD 309 | African Environment and Development* |
| OPD 310 | Rural Settlement and Development |
| ODS 101A | Concepts and Theories of Social Development* |
| | Total |

Elective courses

OGE 229: Geography Field Practical's

There are two Geography Field Practical's (GFP I and GFP II) to be done by all second and third-year students taking Geography. The 2 GFPs will carry 2 units. The aim of conducting Field Practical's is to enable students to match and concretize theory and application of geographical knowledge in the Field. Geography Field Practical's are deliberately decentralized into geographical zones. It is intended to bring the Practical's closer to students in their own physical environments so as to know more about it as a potential for community development; and to minimize GFP running costs.

All second-year Geography students have to undertake a 14-day supervised Geography Field Practical in their respective Geographical Zones/ regions. GFPI & GFPII will be conducted successively within the 14 days provided. Thereafter, students have to write a Group Work Report for GFPI and a comprehensive report for GFPII to be submitted three months after completion of GFPI. Students have to incur subsistence, travel, and stationery costs during Geography Fieldwork apart from paying Tsh 200,000 to the OUT. This amount of money can be solicited by the student from different sources, including applying to the university's Student Loan Board. No student will be allowed to carry out GFPII before completion of GFPI first. The Final Grade is the average between scores obtained after marking GFP I and GFP II out of 100%

Bachelor of Arts in Tourism Management (BTM)

The Bachelor of Arts in Tourism Management (BTM) is a revised programme of the old BA Tourism studies. It prepares competent graduates for a career in the tourism and travel industries. It has been designed to give students a solid foundation in both disciplines in order to prepare them for leadership in the tourism sector. Increasingly, employers prefer university graduates with analytical as well as practical skills for management positions. This programme is aimed at producing informed and knowledgeable graduates with a critical awareness of tourism as one of the most powerful forces in the globalized world of today. They should be in a position to demonstrate a theoretically based and practically sound level of competence for employment as tourism officers, tourism marketers, analysts, tourism planners, travel agents, managers, researchers, educators, policymakers, and tourism entrepreneurs.

Programme Organization

The following are subjects offered for the Bachelor of Arts in Tourism Management (BTM):

Level I

| Course Codes | Course Title | Status of the course |
|--------------|-------------------------------------------------|---------------------------------------------------------------------|
| OTM 101 | Introduction to Tourism | Core |
| OTM 102 | Introduction to Wildlife Ecology | Core |
| OTM 103 | Integrated Hospitality Operations | Core |
| OTM 104 | Special Interest Tourism | Elective |
| OTM 105 | Leisure and Recreation Tourism | Core |
| OTM 106 | Customer Care concepts and practices in Tourism | New this academic year (2022/2023. For old students, it is OME 313) |
| OFC 017 | Communication Skills | Core |
| FRA 1 | French for Beginners | Elective |
| OJO 228 | Public Relations | Elective |
| ORM 101 | Background to Natural Resources | Elective |

Level II

| Course Codes | Course Title | |
|--------------|----------------------------------------|----------|
| OTM 201 | Cultural and Heritage Tourism | Core |
| OTM 202 | Tourism Economics | Core |
| OTM 203 | Tourism Policy & Planning | Core |
| OTM 204 | Tourism Marketing and Promotion | Core |
| OTM 205 | Sustainable Tourism Development | Core |
| OCP 100 | Introduction to Computer | Core |
| OEC 134 | Social Sciences Research Methods | Core |
| FRA 2 | Intermediate French | Elective |
| OLS 203 | Collection Developments and Management | |

Level III

| Course Codes | Course Title | |
|--------------|-----------------------------------------------------|------|
| OTM 301 | Event and Festival Planning Development | Core |
| OTM 302 | Travel and Tour Operations Management | Core |
| OTM 303 | Tourism Entrepreneurship | Core |
| OTM 305A | Tourism field Study (May each year) | Core |
| OTM 305 B | Tourism Internship -4weeks (April-August each year) | Core |
| OTM 305 C | Special Project | Core |

1. OTM 305 A- Tourism Field Study

The tourism field study will be done by all second-year students (after completion of 200 series courses). This is a compulsory field study for all BTM students. The University will cover organization costs and any other charges as stipulated in the cost-sharing policy of the University. Students must pay course fees as per university regulations and cover their travel expenses (the cost of living and other costs as will be communicated by the department. This is usually a one-week education trip to tourism and hospitality establishments; there is no

alternative to this. OTM 305 A is a compulsory course, so all students who fail to attend will not attain BATM. It is usually conducted in May or June. Registration for the field trip is usually in January. Those who register for a trip and fail to attend will have to pay again when the next offer.

2. OTM 305 B- Tourism Internship

Tourism students are advised to attach themselves to one of the tourist service providers such as national parks, hotels, travel and tour companies, museums, etc. It is not allowed to intern in your working office. Registration for the internship is always in January. The internship is for FOUR weeks. Students are advised to do their internship between April and August Each Year.

3. OTM 305 C-Tourism Research Project (Dissertation)

Students are advised to propose a title of interest and email it to the Tourism Department. Thereafter, the department will review the title and give you feedback as either accepted/ accepted with few amendments/rejected and required to re-send. This is done in January each year. The end of submitting a complete research project is AUGUST each year.

Department of Political Science, Public Administration, History and Philosophy

This department has three undergraduate programmes, namely Bachelor of Arts in History, Bachelor of Arts in Public Administration (BAPA) and Bachelor of Arts in International Relations (BAIR).

Bachelor of Arts in History (BA HIST)

All BA History students must take all CORE courses.

Level 1

| Code | Titles |
|----------|-----------------------------------------------------|
| OHI 131 | Introduction to African History |
| OHI 132 | History of Tanzania |
| OHI 133 | Theory and Practice in Africa History |
| OHI 134 | The Political History of Zanzibar |
| OHI 135 | Themes in African Prehistory |
| OHI 136 | Development of Political Philosophy |
| OPR 121 | Introduction to Critical Thinking and Argumentation |
| OFC 017: | Communication Skills |
| OCP 100: | Introduction to Computer |

Level 2

| Course Codes | Course Title |
|--------------|-----------------------------------------------|
| OHI 231 | History of East Africa |
| OHI 232 | History West Africa |
| OHI 233 | Europe since the 19 th Century |
| OHI 234*: | Globalization and African History |
| OHI 235 | History of South Africa to Recent Past |
| OHI 236 | History of USA |
| OHI 237 | Development of Political Philosophy |
| OPR 222 | History and Development of African Philosophy |

**Not on offer in this academic year.*

Level 3

| Course Codes | Course Title |
|--------------|-------------------------------|
| OHI 331 | Africa and the Black Diaspora |
| OHI 332 | History of Central Africa |
| OHI 333 | History of North Africa |

| | |
|-----------|-------------------------------------------|
| OHI 335*: | The History of Africa and World Religions |
| OHI 336*: | Dissertation |

**Not on offer in this academic year.*

Bachelor of Arts in Public Administration (BAPA)

Rationale

The programme has been introduced to cater to the required competencies and skills to manage both government and private affairs at government and personal levels. The cadre that will go through the programme is expected to occupy various positions of administrative nature as supervisory and middle-level managers, either as administrators, personnel officers, human resources officers and several others. This cadre is needed to strengthen the government's capacity at local and central levels to deliver services to its clients for effective and efficient operations of those offices. The fact that the government structure and systems are undergoing remarkable changes requires employees who have been well nurtured and groomed to acquire those attributes of dynamism, innovativeness, creativity and commitment towards the services in their country and in the region as a whole. The fact that Public Administration, which forms part of Political Science, has not been well streamlined in the Political Science and Public Administration stream, not only in our university but also in other old universities where public administration is taught as part of the political science programme. As such, under this programme Public Administration as a discipline and a profession will be more focused and thus enable the trainees to come out well-versed with the methods and approaches in the management of governmental affairs

The specific objectives of this programme are to:

- i. Train students to acquire professional qualifications so that they can serve in different administrative and managerial positions in public and private sector organizations
- ii. Produce graduates who can fit well in the career of public administrators and are able to make a contribution to the dynamics of administration of public and private organizations.
- iii. Equip students with knowledge and skills to enable them to address the complex problems and pressures that surround public organizations and explore viable solutions within those organizations
- iv. Equip students with the requisite qualifications for enrolling in Masters's programme in this University and others within the country and outside the country
- v. Equip students with competences and skills that will make them compete well in the labour market, within the country and in the region as a whole.

Assessment Strategy

All courses are examined during the academic year in which they are studied. The examinations consist of written Tests, demonstrations, Practical projects and written Annual examinations at the end of each part based on percentage guides. Tests account for 30%, while the written Final examination accounts for 70% of total marks. The pass mark for both continuous assessment and annual examination is 40%. A candidate who fails to attain the pass mark is allowed to write a supplementary examination. A candidate who fails a supplementary examination will be required to repeat the course. Repeating a course means doing the Test and Annual examination.

Programme structure

It should be born in mind that the Bachelor of Arts in Public Administration is being introduced to the university for the first time. It covers some theoretical and practical knowledge that will enable students to become better performers in public service. The programme is detailed here under:

| Course Codes | Course Title |
|---------------------|------------------------------------------------------------------|
| Level 1 | |
| OFC 017 | Communication and Study Skills |
| OCP 100 | Introduction to Microcomputer studies and information Technology |
| OPS 122 | Government and Politics in Africa |
| OEC 134 | Social Science Research Methods |
| OPA 101 | Introduction to Public Administration |
| OPA 102 | Organization Theory and Public Bureaucracies |

| | |
|----------------|------------------------------------------------------|
| OPA 103 | Local Government Administration in Tanzania |
| OIR 101 | Introduction to the Study of Politics |
| OIR 102 | Political Thought |
| Level 2 | |
| OPA 201 | Administrative Law |
| OPA 202 | Decision-Making and Public Policy Analysis |
| OPA 203 | Management of Human Resources |
| OPA 204 | Organization Behavior |
| OIA 200 | Field Work/Industrial Attachment |
| OIR 201 | Theories and Issues in International Relations |
| Level 3 | |
| OPA 301 | Budgeting and Financial Control in the Public Sector |
| OPA 302 | Leadership and Governance |
| OPA 303 | Industrial Relations |
| OPA 304 | Strategic Management |
| OPA 305 | Comparative Public Administration |
| OPS 320 | Democracy and Human Rights |
| OIR 302 | Contemporary Issues in Global Politics |

Field Practice:

The students have to undertake a compulsory field attachment for six to eight weeks, during which students shall be exposed to the real world of work. During this period student shall be able to merge theory with practice.

Bachelor of Arts in International Relations (BAIR)

Rationale

A complex pattern of interactions and cross-border transactions in the contemporary international system point to a need to develop training curricula that will cater to the current and future needs of University students to build their capacities to cope with and address the challenges associated with broadly extended international issues. For example, the dramatic change in the modus operandi of the transnational corporations brings about a problem of maneuvering the harmonized rules and principles of equity shares of the gains and losses between partner-states. The Bachelor of Arts in International Relations degree programme is designed to equip students with modern skills and competencies and to prepare them to become responsible international citizens who can act firmly and aggressively in the international arena. The programme is designed to produce qualified and practically competent practitioners in the area of International Relations and Diplomacy who can match theory and practice and demonstrate an impact in the management of foreign affairs. The Bachelor of Arts in International Relations programme is designed to provide students with a combination of theoretical and practical knowledge and with the ability to apply the same in various capacities and levels. Graduates from the programme are expected to have:

- ✓ Analytical capacity on international affairs
- ✓ A high level of communication skills
- ✓ The ability to identify and analyze problems and opportunities and collect pertinent data
- ✓ A sensitivity to controversies of cross-border nature
- ✓ An ability to act as a change agents and manipulator of various foreign affairs

These characteristics will enable graduates of the programme to accomplish their goals by working with and through people in both national and international political settings.

Student Profile

The programme targets local and international individuals who meet the OUT's minimum admission criteria, irrespective of age, gender, race, physical abilities and other individual situations. Offered through the Open and Distance Learning mode, student enrolment in the programme is unlimited.

Programme Structure

The programme is designed and implemented in 3 sequential levels: 100 Level (Level One), which is an introductory to key concepts and theories; 200 Level (Level Two), which imparts detailed knowledge,

and understanding and develops appropriate intellectual skills; and 300 Level (Level Three) which further enhances professional, practical and transferable key skills through research, field visits and internship and synthesis. The three levels can be completed in three years, but average learners can cover the same in not more than six years.

| Course Codes | Course Title |
|----------------|------------------------------------------------|
| Level 1 | |
| OCP100 | Introduction to Computer |
| OFC 017 | Communication Skills |
| OIR 101 | Introduction to the Study of Politics |
| OIR 102 | Political Thought |
| OEC 134 | Social Science Research Methods |
| OIR 103 | Africa in the Global Context |
| OIR 104 | International Organizations |
| OPS 122 | Government and Politics in Africa |
| OPA 101 | Introduction to Public Administration |
| Level 2 | |
| OIR 201 | Theories and Issues in International Relations |
| OIR 202 | International Political Economy |
| OIR 203 | Public International Law |
| OIA 200 | Field Work/Industrial Attachment |
| OPA 202 | Decision Making and Public Policy Analysis |
| FRA1 or FRA 2 | French for Beginners OR Intermediate French |
| Level 3 | |
| OIR 301 | Global Governance |
| OIR 302 | Contemporary Issues in Global Politics |
| OIR 303 | Regional Integration |
| OIR 304 | The Political Economy of Conflict Resolution |
| OPS 320 | Democracy and Human Rights |
| OPA 302 | Leadership and Governance |

Department of Sociology and Social Work

Introduction to the Department of Sociology and Social work

The Department of sociology and social work offers two standalone programmes: Bachelor of Arts in Sociology and Bachelor of Social Work, whereby students graduate either as social workers or as sociologists. These are separate degree programs which are run by the department. Once a student has been accepted into a degree program, they are expected to abide by the requirements of the said degree program.

Bachelor of Arts in Sociology (BASO)

The Department of Sociology and Social offers the degree of Bachelor of Arts in Sociology programme. The programme has two areas of specialization. These specializations can be opted in level two of studies. These two specializations are Medical sociology and Social Welfare Administration. These two options were designed to suit the current social demand. This motivated the need to establish a Master of Sociology which is highly in demand by the stakeholders.

Level I

| Course Code | Course Title |
|-------------|-------------------------------------------------|
| OSS 121 | Introduction to Sociology |
| OSS 122 | Introduction to Social Science Research Methods |
| OSS 123 | Classical Sociological Theory |
| OSS 124 | Introduction to social Psychology |
| OSS 125 | Critical thinking and argumentation |
| OCP 100 | Introduction to computer |
| OFC 017 | Communication skills |

NOTE: After successful completion of all core courses in level I and above, a student will be allowed to choose a specialization from options A or B. However, while doing a specialization course of one's choice, in levels II and III, students **MUST** also do compulsory courses in levels I and level III, respectively. See the table below for a guide to units for BASO students.

Level II

| Course Code | Course Title |
|-------------|----------------------------------|
| OSS 221 | Contemporary Sociological Theory |
| OSS 222 | Social Science Research Methods |
| OSS 223 a | Field Practice I |

Level III

| Course Code | Course Title |
|-------------|-----------------------------------|
| OSS 321 | Sociology of Knowledge |
| OSS 322 | Poverty, Wealth, and Inequality |
| OSS 323 | Globalization and Social Problems |
| OSS 223 b | Field Practice II |

Note: The two specialization courses A and B from which to choose from are as follows.

(A) Medical Sociology Specialization Courses

Level II

| Course Code | Course Title |
|-------------|----------------------------|
| OSS 224 | Cultural Anthropology |
| OSS 225 | Medical Sociology |
| OSS 226 | Population and Development |

Level III

| Course Code | Course Title |
|-------------|----------------------------------|
| OSS 325 | Health systems in Tanzania |
| OSS 326 | Reproductive health |
| OSS 327 | Stratification, Class and Health |

(B) Social Welfare and Administration Specialization Courses

Level II

| Course Code | Course Title |
|--------------|---------------------------------|
| OSS 227 | Introduction to Social Policies |
| OSS 228 | Community Development |
| OSS 229 | Social Welfare services |
| TOTAL | |

Level III

| Course Code | Course Title |
|-------------|--------------------------------|
| OSS 327 | Social policy analysis |
| OSS 328 | Gender and development |
| OSS 329 | Social planning and Evaluation |

Guide to units for BASO students

| Level | OPTION A | OPTION B |
|-------|--------------------------------|--------------------------------|
| I | ALL (12) | ALL (12) |
| II | Level II (5) + Option A II (6) | Level II (5) + Option B II (6) |

| | | |
|--------------|----------------------------------|----------------------------------|
| III | Level III (7) + Option A III (6) | Level III (7) + Option B III (6) |
| TOTAL | 36 | 36 |

Bachelor of Social Work (BSW)

The Bachelor of Social Work (BSW) is a social work professional degree. This degree began in the academic year 2012/2013. This option is only for Bachelor of Social Work entrants from the 2012/2013 academic year. Previously, the department offered a Bachelor of Arts in Social Work degree that has already been phased out.

Level One

| Course Code | Course Title |
|--------------------|-----------------------------------------------|
| OFC 017 | Communication Skills |
| OCP 100 | Introduction to Computer |
| OSS 102 | Introduction to Sociology and Anthropology |
| OSP 101 | Introduction to Social Work |
| OSP 102 | Social Work Professional Ethics |
| OSP 103 | Social Work Research Methods I |
| OSP 104 | Introduction to Psychology for Social Workers |
| | |

Level Two

| Course Code | Course Title |
|--------------------|----------------------------------------------------|
| OSP 201 | Human Behavior and the Social Environment |
| OSP 202 | Empowering Marginalized Populations |
| OSP 203 | Introduction to Social Welfare Policies |
| OSP 204 | Social Work Practice with Individuals and Families |
| OSP 205 | Social Work Practice with Groups |
| OSP 206 | Social Work Practice with Organizations |
| OSP 207 | Social Work Practice with Communities |
| OSP 208 | Introduction to Field Practice |
| OSP 304 | Field Practice I (Block) |
| Total | |

Level Three

| Course Code | Course Title |
|--------------------|-----------------------------------------------|
| OSP 301 | Social Welfare Policy Analysis and Evaluation |
| OSP 302 | Social Work Research Methods II |
| OSP 303 | Social Work Research Project |
| OSP 304 | Field Practice II (Block) |
| Total | |

Non-Degree Programme (Certificate and Diploma in Social Work)

As Tanzania undergoes social changes and growth both demographically and economically, it experiences increasing challenges of resources, marital conflicts, Gender Based Violence (GBV), Violence Against Children (VAC), HIV and AIDS, Child Marriage, Child labour and many others, hence the need for social work intervention. Based on the same argument, developing Social Work Competence-Based Training Curriculum was required to equip graduates from Social Work institutions with the necessary knowledge and skills to address the challenges competently.

NTA Level 4: Semester I

| Code | Module Title | Scheme Of Study Hrs/Wk | | | | |
|-------------|---------------------|-------------------------------|----------|----------|-----------|---------------|
| | | L | T | P | AS | Credit |
| | | | | | | |

| | | | | | | |
|----------|-----------------------------------------------------|-----------|----------|----------|-----------|-----------|
| SWT04101 | Basics of Social Work | 3 | 2 | 2 | 2 | 14 |
| SWT04102 | Social Work Values and Ethics | 2 | 1 | - | 1 | 06 |
| SWT04103 | Information Communication Technology in Social Work | 2 | 1 | 2 | 2 | 10 |
| SWT04106 | Fundamentals of Sociology | 2 | 1 | - | 1 | 06 |
| SWT04109 | Psychology for Social Workers | 2 | 1 | 2 | 2 | 10 |
| SWT04110 | Social Welfare Services | 2 | 2 | 2 | 2 | 12 |
| | Sub -Total hours/Week | 13 | 8 | 8 | 10 | 58 |
| | Total hours/Week | 39 | | | | |

NTA Level 4: Semester II

| Code | Module Title | Scheme Of Study Hrs/Wk | | | | |
|----------|-------------------------------------------------|------------------------|----------|----------|----------|-----------|
| | | L | T | P | AS | Credit |
| SWT04204 | Social Work Practice in Health Care | 2 | 2 | 3 | 2 | 13 |
| SWT04205 | Social Psychology for Social Workers | 2 | 2 | 1 | 2 | 11 |
| SWT04207 | Human Rights and Gender in Social work Practice | 2 | 1 | - | 1 | 06 |
| SWT04208 | Fundamentals of Social Empowerment | 2 | 1 | 1 | 1 | 07 |
| SWT04211 | Basics of Social Work Field Instructions | 2 | 1 | - | 1 | 05 |
| SWT04212 | Block field Work | - | - | - | - | 25 |
| | Sub -Total hours/Week | 10 | 7 | 5 | 7 | 67 |
| | Total hours/Week | *29 | | | | |

NTA Level 5: Semester 1

| Code | Module Title | Scheme of Study Hours/Week | | | | |
|-----------|-------------------------------------|----------------------------|----------|-----------|----------|-----------|
| | | L | T | P | AS | Credit |
| SWT 05101 | Communication Skills | 2 | 1 | 2 | 2 | 10 |
| SWT 05102 | Guidance and Counseling | 3 | 1 | 3 | 2 | 14 |
| SWT 05103 | Social Welfare Policy and Services | 3 | 1 | 2 | 1 | 11 |
| SWT 05104 | Social Work Practice | 2 | 1 | 1 | 1 | 8 |
| SWT 05105 | Basic Statistics for Social Workers | 2 | - | 2 | 1 | 8 |
| SWT 05106 | Social Work Case Management | 3 | 1 | 2 | 1 | 10 |
| | Sub-Total hours/Week | 15 | 5 | 12 | 8 | 61 |
| | Total Hours/week | 40 | | | | |

Semester II

| Code | Module Title | Scheme Of Study Hrs/Wk | | | | |
|----------|---------------------------------|------------------------|----------|----------|----------|-----------|
| | | L | T | P | AS | Credit |
| SWT05207 | Entrepreneurship skills | 2 | 1 | 1 | 1 | 08 |
| SWT05208 | Social Advocacy and Empowerment | 3 | - | 2 | 2 | 10 |
| SWT05209 | Social work and Law | 3 | 1 | 2 | 1 | 11 |
| SWT05210 | Social Work Field Instruction | 2 | - | - | 1 | 5 |
| SWT05211 | Block Field Work Practice | - | - | - | - | 25 |
| | Sub-Total hours/Week | 10 | 2 | 5 | 5 | 59 |
| | Total Hrs/week | 22* | | | | |

Key

L - Lecture hours
 T - Tutorials hours
 P – Practical/Project hours
 AS – Assignment hours

* The rest of the hours per week in a semester will be allocated for Block Field practice

NTA Level Six: Semester 1

| Code | Module Title | Scheme Of Study Hrs/Wk. | | | | |
|----------|---------------------------------------------------|-------------------------|----------|----------|----------|-----------|
| | | L | T | P | AS | Credit |
| SWT06101 | Social Policy | 2 | 1 | 1 | 1 | 7 |
| SWT06103 | Resource Mobilization for Social Welfare Services | 2 | 1 | 2 | 2 | 10 |
| SWT06104 | Rehabilitation Services in Social Work Practice | 2 | - | 1 | 1 | 7 |
| SWT06107 | Administration of Social Welfare Resources | 4 | 1 | 1 | 2 | 12 |
| SWT06108 | Social Work Best Practices | 2 | 2 | 2 | 2 | 12 |
| SWT06109 | Basic Leadership and Administration Skills | 2 | 1 | 1 | 1 | 8 |
| | Sub-Total hours/Week | 14 | 6 | 8 | 9 | 56 |
| | Total hours per week | 37 | | | | |

Key

L - Lecture hours
 T - Tutorials hours
 P - Practical hours
 AS – Assignment hours

| Semester II | | | | | | |
|-------------|--------------------------------------------------------------|-------------------------|----------|----------|----------|-----------|
| Code | Module Title | Scheme Of Study Hrs/Wk. | | | | |
| | | L | T | P | AS | Credit |
| SWT06202 | Applied Social Welfare Laws | 2 | 1 | 1 | 1 | 7 |
| SWT06205 | Social Work Research Methods | 2 | 1 | 1 | 2 | 10 |
| SWT06206 | Crisis Intervention and Conflict Management | 2 | 1 | 1 | 1 | 10 |
| SWT06210 | Social work interventions in HIV and AIDS | 1 | | 1 | 1 | 4 |
| SWT06211 | Quality Assurance and Improvement in Social Welfare Services | 1 | - | 1 | 1 | 5 |
| SWT06212 | Block Field Practice | - | - | - | - | 30 |
| | Sub-Total hours/Week | 8 | 3 | 5 | 6 | 65 |
| | Total hours/week | *22 | | | | |

* The rest of the hours per week in a semester will be allocated for Block Field practice

Department of Media and Library Studies

Introduction

The Department of Journalism and Media Studies offers three-degree programs, which are BA Journalism and BA Mass Communication and Bachelor of Library Information Management, whereby students graduate as Journalists or as public relations officers/corporate secretaries and library professionals. The degree programmes are designed in such a manner that during the first year of the studies, all students i.e., those taking B.A Journalism and those pursuing BA Mass Communication will

undertake the same subjects. During the second and third year, however, the students taking Journalism will undertake a different programme from that of Mass Communication hence the difference in their output. The department also runs MA (Mass Communication) for postgraduate students

Entry qualifications

Candidates for Journalism and Media Studies will only be admitted based on The Open University of Tanzania's rules and regulations which govern the admission process.

Subject combination

There are 21 core subjects for BA Journalism and 23 core subjects for BA Mass Communication. Four of the core subjects which students of both programmes are required to undertake at Level I are offered by other Departments. These courses include OFC 017 Communication Skills, OCP 100 Introduction to Microcomputer Studies and Information Technology, OCP 121 Critical Thinking and Argumentation, and ODS 101A Concepts and Theories of Social Development. The core subjects for the BA Journalism programme form a total number of 34 units while the BA Mass Communication programme forms 36 units. BA Journalism students shall be required to take at least five elective courses while BA Mass Communication students shall take at least three elective courses to cover 39 units in order to graduate. Two elective courses are offered at Level I for both programmes, three elective courses at Level II whereby two for BA Journalism and only one for BA Mass Communication, and at Level III, only one elective course is offered for both programmes.

Assessment procedure

Course work for BA Journalism and BA Mass Communication accounts for 30% for the Main Timed Tests. The Annual Examination accounts for 70%, thus making a total of 100% score.

Students' FieldWork and Practicum

All students will be required to undertake field study at Levels II and III. Also, students shall be required to conduct practicum at all Levels. Field work and practicum carries two units at each level.

Bachelor of Arts in Journalism (BA Journalism)

Level One

| Course Code | Course Name |
|-------------|---------------------------------------------------|
| OJO 121 | Introduction to Journalism and Mass Communication |
| OJO 122 | News Reporting – I |
| OJO 123 | Introduction to Media Law and Ethics |
| OJO 124 | Practicum |
| OJO 125 | English for the Media |
| OJO 126 | Kiswahili kwa Wanahabari |
| OCP 100 | Introduction to Computer |
| OFC 017 | Communication Skills |
| OPR 121 | Critical Thinking and Argumentation |
| ODS 101 A | Concepts and Theories of Social Development |

Level Two

| Course Code | Course Name |
|-----------------------------------|-------------------------------------------------|
| OJO 220 | Practicum |
| OJO 221 | News Reporting – II |
| OJO 222 | Features and Opinion Writing |
| OJO 223 | Photojournalism |
| OJO 224 | Media Law and Ethics |
| OJO 225 | Editing, Layout and Graphics |
| OJO 226 | Media Research |
| OJO 227 | Broadcasting: Radio, Television |
| OJO 228N* | Specialized Reporting: HIV & AIDS, Environment. |
| Total Units for This Level | |

Level Three

| Course Code | Course Name |
|-----------------------------------|-------------------------------------------------------------------------------------------------|
| OJO 320 | Practicum |
| OJO 321N* | Specialized Reporting: Edutainment, Court Reporting, Political Reporting and Business Reporting |
| OJO 322 | New Media Technologies |
| OJO 323 | Media Management |
| OJO 324 | Investigative Journalism |
| OJO 325 | Dissertation |
| Total Units for this Level | |

*N=new course

Note: From the academic year (2013/2014), course codes for the BA Mass communication Programme have changed from "OJO" to "OMC" for all series, as indicated in the table below, to reflect the name of the programme.

Bachelor of Arts in Mass Communication (BA Mass Comm)

Level One

| Course Code | Course Name |
|-------------|---------------------------------------------------|
| OMC 121 | Introduction to Journalism and Mass Communication |
| OMC 122 | News Reporting – I |
| OMC 123 | Introduction to Media Law and Ethics |
| OMC 124 | Practicum |
| OMC 125 | English for the Media |
| OMC 126 | Kiswahili kwa Wanahabari |
| OCP 100 | Introduction to Computer |
| OFC 017 | Communication Skills |
| OPR 121 | Critical Thinking and Argumentation |
| ODS 101 A | Concepts and Theories of Social Development |

Level Two

| Course Code | Course Name |
|-------------|---------------------------------------------------------------------|
| OMC 220 | Practicum |
| OMC 221 | News Reporting – II |
| OMC 222 | International Issues in Mass Communication |
| OMC 223 | Advertising I |
| OMC 224 | Media Law and Ethics |
| OMC 225 | Editing, Layout and Graphics |
| OMC 226 | Media Research |
| OMC 227 | Broadcasting: Television and Radio |
| OMC 228 | Specialized Reporting: HIV & AIDS, Environment or Local Government. |
| OMC 229 | Public Relations I |

Level Three

| Course Code | Course Name |
|-------------|------------------------------------------------------------------------------------------------|
| OMC 320 | Practicum |
| OMC 321 | Specialized Reporting: Edutainment, Court Reporting Political Reporting and Business Reporting |
| OMC 322 | New Media Technologies |
| OMC 323 | Media Management |
| OMC 324 | Public Relations II |
| OMC 325 | Dissertation |
| OMC 326 | Advertisement II |

Old Codes Equivalent to New Codes for BA Journalism

| Old Code | New Code |
|----------|----------|
| OJO 230 | OJO 220 |

| | |
|---------|----------|
| OJO 231 | OJO 228N |
| OJO 321 | OJO 324N |
| OJO 326 | OJO 325N |
| OJO 328 | OJO 321N |
| OJO 327 | OJO 320 |

Old Codes Equivalent to New Codes for BA Mass Communication

| Old Code | New Code | Course Name |
|----------|----------|------------------------------------------------------------------------------------------------|
| OJO 121 | OMC 121 | Introduction to Journalism and Mass Communication |
| OJO 122 | OMC 122 | News Reporting – I |
| OJO 123 | OMC 123 | Introduction to Media Law and Ethics |
| OJO 124 | OMC 124 | Practicum |
| OJO 125 | OMC 125 | English for the Media |
| OJO 126 | OMC 126 | Kiswahili kwa Wanahabari |
| OJO 230 | OMC 220 | Practicum |
| OJO 221 | OMC 221 | News Reporting – II |
| OJO 232 | OMC 222 | International Issues in Mass Communication |
| OJO 229 | OMC 223 | Advertising I |
| OJO 224 | OMC 224 | Media Law and Ethics |
| OJO 225 | OMC 225 | Editing, Layout and Graphics |
| OJO 226 | OMC 226 | Media Research |
| | OMC 227 | Broadcasting: Television and Radio |
| OJO 231 | OMC 228 | Specialized Reporting: HIV & AIDS, Environment or Local Government |
| OJO 228 | OMC 229 | Public Relations I |
| OJO 327 | OMC 320 | Practicum |
| OJO 328 | OMC 321 | Specialized Reporting: Edutainment, Court Reporting Political Reporting and Business Reporting |
| OJO 322 | OMC 322 | New Media Technologies |
| OJO 323 | OMC 323 | Media Management |
| OJO 324 | OMC 324 | Public Relations – II |
| OJO 326 | OMC 325 | Dissertation |
| OJO 325 | OMC 326 | Advertisement – II |

Bachelor of Library and Information Management (BLIM)

Programme Overview

A Bachelor of Library and Information Management has been developed in response to the demand for a large number of trained personnel in libraries, documentation and information centers. Another reason is due to repeated requests by practitioners in the Library Science profession who need further training opportunities through a distance-learning mode of delivery that is both flexible and affordable. The Bachelor of Library and Information Management Programme is offered through distance learning mode. The main medium of instruction will be print materials and ICT-supported e-materials. To qualify for the award of a degree, a candidate must clear all three levels of the degree course. The maximum duration of study is eight years, but the teaching and learning process is flexible enough to allow fast learners to complete the programme earlier. A fast-learning student may cover more units in a year; hence be able to complete the courses in less than the specified average period for obtaining a degree which currently is three years. The Bachelor of Library and Information Management Programme is designed to provide the student with a combination of theoretical and practical knowledge and with abilities to apply the same in various functional areas of library and information science. Graduates from the programme are expected to develop attitudes associated with progressive information services and to develop an understanding of the value, role and application of modern technology as it relates to library operations and the transfer of knowledge.

Programme Structure

The programme requires a student to complete a minimum of 38 OUT units, including a Practicum to graduate. A student will have to study at least 12 units for each academic year. Core courses are compulsory for all students. Beyond the required core courses, students have the option of crafting a

program of study specific to their interests and career goals in order to fill the gap so as to have 12 units as a minimum; there is no restriction in studying electives.

Level I

| Course Codes | Course Title |
|--------------|------------------------------------------------------------------|
| OCP 100 | Introduction to Microcomputer Studies and Information Technology |
| OFC 017 | Communication Skills |
| OLM 101 | Introduction to Library and Information Sciences |
| OLM 102 | Information sources and references services |
| OLM 103 | Information Society |
| OLM 104 | Organization of Knowledge |

Level II

| Course Codes | Course Title |
|--------------|------------------------------------------------------|
| OLM 201 | Information Technology and its Applications in LIS |
| OLM 202 | Records Management and Archives Administration |
| OLM 203 | Collection Developments and Management |
| OLM 204 | Research Methods in Library and Information Sciences |
| OLM 205 | Publishing and Book Trade Industry |
| OLM 206 | Practicum |

Level III

| Course Codes | Course Title |
|--------------|-------------------------------------------------|
| OLM 301 | Information and Knowledge Management |
| OLM 302 | Management of Libraries and Information Centres |
| OLM 303 | Legal Issues and Professional Ethics |
| OLM 304 | Entrepreneurship and Information Marketing |
| OLM 305 | Digital Libraries |
| OLM 306 | Research Project |

Electives

Students should select at least one optional course at level II and III

| Course Codes | Course Title |
|--------------|------------------------------------------------------------------------|
| OLM 207 | Information systems design, analysis and Evaluation |
| OLM 208 | Multimedia Studies |
| OLM 307 | Sectoral Information systems and Services for users with special needs |
| OLM 308 | Database Management and Information Retrieval |

Notes:

- (i) The total credits for the programme is 380 (TCU credits), which is equivalent to 38 OUT Units
- (ii) OCP 100 and OFC 017 are compulsory university-wide courses.

OLM 206 Practicum: The practical training attachment exercise will require each student to work in a selected Library, Archive or Information Centre for a minimum period of 42 days. The field attachment exercise shall be assessed and graded.

Part Three

Postgraduate Programmes

The faculty offers various postgraduate studies programmes, especially **master's degrees and postgraduate diplomas**. The Master's Degree and Postgraduate Diploma programmes to be offered by FASS during the 2022/23 academic year are as follows:

Master's Degree Programmes

- Master of Social work (MSW) – *(Hybrid mode)*
- Master of Arts in Gender Studies (MA GS) *Hybrid*
- Master of Science in Economics (MSc. Economics) – *Hybrid mode*
- Masters in Community Economic Development (MCED)- *Hybrid mode*
- Master of Arts in Monitoring and Evaluation (MA M&E)- *Hybrid mode*
- Master in Tourism Planning and Management (MTPM)- *Hybrid mode*
- Master of Arts in History (MA Hist)- *Hybrid mode*
- Master of Arts in Natural Resource Assessment and Management (MANRAM)- *Hybrid mode*
- Master of Arts in International Cooperation and Development (MICD)- *Hybrid mode*
- Master of Humanitarian Action, Cooperation and Development (MHACD) *Hybrid mode*
- Master of Arts in Governance and Leadership (MAGL)- *Hybrid mode*
- Master of Arts in Kiswahili (MA Kisw)- *Hybrid mode*
- Master of Arts in Linguistics (MA Ling)-Thesis
- Master of Arts in Geography (M.A. Geogr)-Thesis
- Master of Arts in Mass Communication (MA MC)- *Hybrid mode*
- Master in Library Information Management (MLIM)-*Hybrid*

Postgraduate Diploma Programmes

- Post Graduate Diploma in Social Work- (PGDSW)- *Hybrid*

Admission Requirements

Candidate holding the first degree or its equivalence in any field from recognized institutions is eligible for admission into FASS programme. Further admission criteria are as stipulated in the OUT prospectus (www.out.ac.tz/prospectus)

Delivery Modes for Master's Programmes by Coursework

We are progressively making use of a Virtual Learning Environment (VLE) called MOODLE (Modular Object-Oriented Dynamic Learning Environment). To access the MOODLE platform, you will need to log into the relevant portal with your username and password. MOODLE can be used for the purpose of downloading the relevant learning resources and it can also be used as a platform for student-student or student-teacher interactions. From the new academic year starting Oct 2015, all FASS programmes will be offered through blended/hybrid executive mode, where students learn through an e-learning platform called MOODLE. Through this platform, students are registered into the system and a lecturer for each course uploads documents to be read in one week. In week 2 a lecturer posts a discussion question and appoints two students to propose a model answer. Other students do discuss online by posting their emails and commenting on the model answer.

Programme Structure and Assessment

So, to complete one course, there are six parts, equal to 12 weeks of learning for each course. There are three modules (trimesters) of about 12 weeks each required to complete the coursework. For example, if the programme has 6 taught courses in total, for each module, there could be two courses (i.e., two instructors). For each course in a trimester, there is a different assessment because they are taught by different lecturers. For each course, there is a take-home term paper (assignment) to be given to students in the second half of the respective trimester); and a final comprehensive examination at the end of the trimester. The online discussions weigh 20%, the term paper-30% and the final exam-

50%. The lecturers do monitor the accuracy of contributions each student makes when discussing constituting the 20%. The examination is done by students at any regional center when they are ready. Students must have participated in the discussions for all 6 parts of the course in the MOODLE platform for them to be allowed to do final examinations. The final exam is done after the second F2F session after consultations with students.

Face-to-Face Sessions

There are two face-to-face sessions. The first one is done once only-this is for orienting students before the programme starts. The objective is to officially launch the programme and orient students on how to use MOODLE and how to register and modify their profiles in MOODLE platform. This takes about 2-4 days, normally on weekend in Dar es Salaam. If students cannot afford to come to Dar es Salaam, they are advised to visit any of the OUT regional centres where we have ICT technical staff who can register them into MOODLE system and orient them on how to use the MOODLE platform. In the first face-to-face, all lecturers are encouraged to be around, but most of the orientation is done by the programme coordinator and the Heads of the Department. The second Face-to-Face is done at the end of each trimester, where the lecturers involved in the trimester do meet with students normally in Dar es Salaam each for about 2 days hence 4 days for the two courses. The second Face-to-Face sessions are optional for students. Instructors do respond to difficult areas encountered while reading the documents and also during the discussions. It is also the time lecturer may insist on or clarify some academic issues that are of interest to students. The Face-to-Face sessions (first or second) can be conducted in any regional centre with at least 10 students. This implies that one does not necessarily have to leave the workstation to do this course (and other FASS courses) from Oct 2015.

Duration of Programmes and Tuition Fees

The duration of the programmes is about 15 months (about 9 months' coursework and 6 months of dissertation). The fee is Tsh. 500,000 for each course, excluding the dissertation, i.e., the cost for one unit (10 credits) is equivalent to Tsh. 180,000, while most postgraduate courses weigh 2 units (20 credits).

The supervision cost for the dissertation is Tsh. 900,000. The minimum number of taught courses for most master's programmes is 6 (i.e. 2 courses per trimester excluding dissertation); hence the minimum tuition fee for such a programme with 6 taught courses would be Tsh. 3,900,000 [i.e. (500,000X6) + 900,000].

It should be noted that each examination is charged Tsh. 20,000 different from the tuition fee; hence a student should think of allocating Tsh. 120,000 for the 6 courses. This makes a comprehensive total fee to be Tsh. 4,020,000. The fee is paid in installments per trimester/module, and this is calculated according to the number of courses a student takes in one trimester/module. For example, if one takes two courses in a trimester/module, they will have to pay at least Tsh. 1,000,000.

Master of Arts in Governance and Leadership (MAGL)

Master of Arts in Governance and Leadership Programme is designed for practitioners working or intending to work within community-based organizations, faith-based organizations, non-governmental organizations, international non-governmental organizations, international organizations, local governments and central governments.

Programme Structure

| Code | Course Title |
|---------|---------------------------------------------|
| OPS 601 | Advanced Political Theory |
| OPS 602 | Leadership, Governance and Development |
| OPS 603 | Advanced Research Methodology |
| OPS 604 | Leadership Ethics and Public Accountability |
| OPS 605 | Political Parties, Democracy and Elections |
| OPS 606 | Organization Behaviour |
| OPS 607 | Advanced Public Policy Analysis |
| OPS 608 | Strategic and Human Resource Management |
| OPS 609 | Advanced Public Administrative Law |
| OPS 699 | Masters Dissertation |

Master of Arts in International Cooperation and Development (MICD)

The Master's programme in International Cooperation and Development (MICD) is a three-trimester programme that benefits from the experience of a highly qualified team of lecturers who are specialized in various areas of international cooperation and Development such as Development Aid, International and Development Economics, Political Science, International Security and International Law. The programme is highly motivating for those who intend to work either in NGOs or enterprises with international activities or in the framework of multilateral institutions.

Programme Structure

| Code | Course Title |
|-------------|----------------------------------------------------|
| OIR 601 | International Cooperation and Development Policies |
| OIR 602 | International Politics and Security |
| OPS 603 | Advanced Research Methodology |
| OIR 604 | African International Relations and Diplomacy |
| OIR 603 | International Political Economy |
| OIR 605 | Public International Law |
| OPS 601 | Advanced Political Theory |
| OPS 699 | Methodology and Master's Dissertation |

Masters of Humanitarian Action, Cooperation and Development (MHACD)

The Master of Humanitarian Action, Cooperation and Development (MHACD) programme offers a wide approach to issues concerning humanitarian actions well as to methodological research procedures. The programme benefits from the experience of a highly qualified team of lecturers who are specialized in various areas of Humanitarian and Development Aid, such as Management of NGOs, Design and Implementation of Projects on Humanitarian Action, international and Development Economics, Political Science, International Security, and International Humanitarian Law.

Programme Structure

| Code | Course title |
|-------------|--------------------------------------------------------|
| OHA 601 | Crisis, Reconstruction and Development |
| OHA 602 | Strategic Management of NGOs and Humanitarian Missions |
| OIR 601 | International Cooperation and Development Policies |
| OHA 603 | Public Health and Humanitarian Issues |
| OIR 602 | International Politics and Security |
| OPS 602 | Leadership, Governance and Development |
| OPS 603 | Advanced Research Methodology |
| OIR 605 | Public International Law |
| OIR 699 | Masters Research Projects (Dissertation) |

Master of Science in Economics (MSc Econ)

The Master of Science in Economics (MSc. Econ) is a worthwhile graduate programme offered by The Open University of Tanzania through its Centre for Economics and Community Economic Development (CECED). The introduction of this programme was pressed by need for more trained economists at postgraduate level for sustainable national and international development.

Programme Structure

| Code | Course Title |
|-------------|---------------------------------------------------|
| OEC 630 | Advanced Microeconomics |
| OEC 631 | Advanced Macroeconomics |
| OEC 632 | Advanced Mathematics and Econometrics |
| OEC 633 | Advanced Econometric |
| OEC 634 | Macroeconomic Policy for Developing Countries |
| | Electives (Choose one course) |
| OEC 635 | Economics of Money, Banking and Financial Markets |
| OEC 636 | International Economics |

| | |
|---------|-------------------------|
| OEC 637 | Public Economics |
| OEC 638 | Environmental Economics |
| OEC 699 | Dissertation |

Master of Arts in Monitoring and Evaluation (MA M&E)

The Master of Arts in Monitoring and Evaluation (MA M&E) is an academic programme which seeks to develop sound and in-depth understanding on theoretical and practical aspects of monitoring and evaluation. It seeks to increase the pool of skilled human resources in the field of monitoring and evaluation in order to support government's initiatives in propelling socioeconomic development and wellbeing of Tanzanians. The programme adopts standard methods, techniques and best practices that are increasingly employed by international organizations such as the United Nations Development Programmes (UNDP) and the World Bank.

Programme Structure

| Code | Compulsory Courses (core) |
|---------|-------------------------------------------------------|
| OEC 620 | Fundamentals of Project Planning and Management |
| OEC 621 | Principles and Practices of Monitoring and Evaluation |
| OEC 622 | Research Methods and Statistics for Impact Evaluation |
| OEC 623 | Planning for Monitoring and Evaluation System |
| OEC 624 | Designing for Monitoring and Evaluation System |
| | Electives (Choose one course) |
| OEC 625 | Cost Benefit Analysis: Theory and Application |
| OEC 626 | Risk Management in Monitoring and Evaluation |
| OEC 627 | Environmental Impact Assessment |
| OEC 699 | Dissertation |

Master of Community Economic Development (MCED)

The Masters of Community Economic Development (MCED) is an exciting programme offered by The Open University of Tanzania through its Centre of Economics and Community Economic Development. (CEC)

Programme Structure

| Compulsory Modules (Core) | |
|---------------------------|-------------------------------------------------------|
| Course Code | Course Title |
| CED 631 | Principles and practice of CED |
| CED 632 | Advanced Research methods for Social Scientists |
| CED 633 | Economics for CED |
| CED 634 | Project design and management CED |
| CED635 | Organizational management for community organizations |
| CED 636 | Micro-Enterprise Development CED |
| CED 699 | Dissertation |

Master of Arts in History (MA History)

MA programme in History is a two-year programme divided into Teaching, Book reviews and Term papers based on a selected list of- topics and a Final Examination. The programme gives the history graduate the advantage of having skills with many practical applications in the job market and adds upon what they have acquired during their undergraduate studies.

Programme Structure

| Code | Course Name |
|---------|------------------------------------------------|
| OHI 601 | Philosophy and Theory of History |
| OHI 602 | Contemporary Issues in African Historiography |
| OH1 603 | History Research Methodology |
| OHI 604 | Colloquium on the Economic History of Tanzania |
| OHI 605 | Graduate Seminar on Globalization |
| OHI 606 | African Encounter with World Religions |

| | |
|---------|------------------------------------------|
| OHI 607 | Spirit, Mediums, Disease and Healing |
| OHI 608 | African Indigenous Knowledge Systems |
| OHI 609 | Peasantry and Labour Studies in Tanzania |
| OHI 612 | Dissertation |

Master of Arts in Kiswahili

The MA Kiswahili programme has the three key objectives:

- (i) To train skilled professionals in Kiswahili Language, Linguistics and Literature
- (ii) Produce scholars who can comprehend the significance of Kiswahili Language and its contribution towards national and international development
- (iii) To equip students with stock of capabilities particularly in research and publication.

Kiswahili Literature - Core Courses

| Course Code | Course Title |
|-------------|--------------------------------|
| OSW 601 | Classical & Modern Poetry |
| OSW 602 | Kiswahili Drama |
| OSW 603 | Kiswahili Novel |
| OSW 604 | Theories of Literary Criticism |
| OSW 605 | A selected Author |
| OSW 606 | Oral Literature |
| OSW 607 | Movie Criticism |

Kiswahili Linguistics

| Course Code | Course Title |
|---------------------------|----------------------------------|
| OSW 608 | Kiswahili Phonology |
| OSW 609 | Kiswahili Morphology |
| OSW 610 | Kiswahili Syntax |
| OSW 611 | Kiswahili Semantics |
| Elective Courses | |
| OSW 612 | History of Kiswahili Dialect |
| OSW 613 | Sociolinguistics |
| OSW 614 | Translation: Theory and Practice |
| OSW 615 | Kiswahili Lexicography |
| Compulsory Courses | |
| OSW 616 | Research Methodology |
| OSW 617 | Dissertation Writing |

Master of Arts in Natural Resource Assessment and Management (MA NRAM)

MA (NRAM) is a broad continuum programme intended to quench thirst for knowledge to different clients regardless of age, sex and nationality. It is a timely programme aspiring to fill the knowledge and intellectual gap on sustainable natural resource management, which is a universal concern today, embracing both those with social sciences and natural sciences backgrounds. The main objective of the MA (NRAM) Programme is to equip professionals with innovative knowledge, skills and values in integrated natural resource assessment and management to enhance understanding of current natural resource management and environmental issues.

Programme Structure

| Course Code | Title |
|-------------------------------|-------------------------------------------------------------------------------------|
| ORM 601 | Contemporary Issues in Natural Resource Assessment and Management |
| ORM 602 | Economics of Environmental and Natural Resources |
| ORM 603 | Climate Change and Environmental Impact Assessment |
| ORM 604 | Population Dynamics and Natural Resource Management |
| ORM 605 | Applied GIS and Remote Sensing for Natural Resources Assessment |
| ORM 606 | Research Methodology and Techniques in Natural Resource Assessment and Dissertation |
| Electives (Choose One) | |
| ORM 607 | Land Degradation and Rural Livelihoods |

| | |
|---------|------------------------------------------------------------|
| ORM 608 | Sustainable Energy Resources for Developing Countries |
| ORM 609 | Biodiversity Conservation and Ecosystem Management |
| ORM 610 | Ecology of Tropical Natural Resources |
| ORM 611 | Changes in Urban Landscape and Future of Natural Resources |

Master in Tourism Planning Management (MTPM)

Master in Tourism Planning and Management (MTPM) programme is aimed at producing well-informed and highly knowledgeable graduates with a critical awareness of tourism as one of the most powerful forces in the globalizing World. Graduates should be in a position to demonstrate a theoretically based and practically sound level of competence for employment as tourism officers, tourism marketers, analysts, tourism planners, travel agents, managers, researchers, educators, policymakers, and tourism entrepreneurs.

Programme Structure

| Code | Course Title |
|---------|--------------------------------------------|
| OTM 601 | Theories and Practice of Tourism |
| OTM 602 | Tourism Policy and Planning |
| OTM 603 | Approaches to Hospitality Management |
| OTM 604 | Tourism and Hospitality Entrepreneurship |
| OTM 605 | Tourism Marketing and Promotion |
| OTM 606 | Sustainable Tourism Development |
| OTM 698 | Advanced Research Methods and Dissertation |

Master of Social Work (MSW)

Master of Social work is designed to enable students to enhance human wellbeing and help clients to meet their basic human needs. Further, the program aims at enabling students to empower clients who are vulnerable, oppressed and living in poverty. A student must accumulate a total 180 credits to graduate out of which 80 are for Practicum and dissertation. The remaining 100 are from taught courses i.e., 80 credits from 4 core courses and 20 credits from one elective course. The duration of this programme is about 18 months.

Programme Structure

| Course Code | Course Title |
|---------------------------------------------------------------------|---------------------------------------------------|
| OSP 602 | Advanced Clinical Social Work |
| OSP 603 | Advanced Administrative and Community Social Work |
| OSP 604 | Advance Social Welfare Policy |
| OSP 605 | Advanced Social Work Research Methods |
| OSP 606 | Postgraduate Field Practicum (600 hours) |
| OSP 607 | Dissertation |
| Elective Courses (Select one course for your specialization) | |
| OSP 610 | Leadership with Children and Families Services |
| OSP 611 | Leadership in Health Services |
| OSP 612 | Leadership in Development & Emergency Response |
| OSP 613 | Leadership in Social Work Education |

Master of Arts in Gender Studies (MA GS)

Master of Arts in Gender Studies (MA GS) is structured in a way that it produces conversant scholars capable of addressing issues related to gender disparities, development challenges and gender inequalities in society.

Programme Structure

| Course Code | Title (Compulsory) |
|-------------|--------------------------------------------------------------------------|
| OGS 600 | Feminist/Gender Theories, |
| OGS 601 | Principles of Gender Construction, Deconstruction & Gender Mainstreaming |
| OGS 602 | Gender and Community Economics |
| OGS 603 | Gender Population & Development |

| | |
|-----------------------------------------------------|----------------------------------------------|
| OGS 604 N | Gender Research Methodology and Dissertation |
| Elective Courses (select at least 2 courses) | |
| OGS 605 | Gender Technology and Education |
| OGS 606 | Gender, Health and Social Issues |
| OGS 607 | Gender Food and Environment |
| OGS 618 | Gender, Language, Literature and Culture |
| Total Units | |

Postgraduate Diploma in Social Work (PGDSW)

Postgraduate Diploma in Social Work (PGDSW) has been motivated by the rapid increase of multifaceted problems due to local and international forces that affect most of the people, particularly the disadvantaged ones. The programme is suitable for students who basically do not have a social work background at the bachelor's degree/advanced diploma levels that aspire for a Master of Social Work.

Programme Structure

| Code | Title |
|---------|----------------------------------------------------|
| OSP 501 | Social Work Professional Ethics |
| OSP 503 | Human Behavior and Social Environment |
| OSP 504 | Social Work Practice with Individuals and Families |
| OSP 506 | Social Work Practice with Organizations |
| OSP 508 | Introduction to Field Practice |
| OSP 509 | Social Welfare Policy Analysis and Evaluation |
| OSP 510 | Field Practice (Block) |

Master of Arts in Mass Communication (MA MC)

The Department of Journalism and Media Studies in the Faculty of Arts and Social Sciences for the past 6 years has been offering BA in Mass Communication and BA Journalism degree programmes. Some of the graduates of the two programmes work in media houses, in public and private organizations as journalists, editors, communication/information officers or Public Relations Officers.

The Master of Arts in Mass Communication degree programme is designed to meet the needs of labour market and the educational needs of recent graduates and professionals. The program's curriculum emphasizes the integrated nature of the communication discipline. For example, the program offers education in Communication research, theories of mass communication, public opinion and media, theories of development and development communication, communication regulations and ethics, new media technology and communication planning. Therefore, the programme aims to provide the opportunity for career enhancement and/or further graduate studies.

Programme Structure

| Course Code | Course title |
|-------------|--------------------------------------------------|
| OMC 600 | Mass Communication Theories and Models |
| OMC 601 | Mass Communication Regulations |
| OMC 602 | Mass Communication Ethics |
| OMC 603 | Public Opinion and Mass Media |
| OMC 604 | Advanced Mass Communication Research Methodology |
| OMC 605 | Master's Dissertation |
| OMC 606 | Mass Communication Planning and Management |
| OMC 607 | Strategic Corporate Communication |

Master in Library & Information Management (MLIM)

This programme is designed and developed to build professional skills across the information industry and creates opportunities for specializations in a variety of disciplines. It is intended for information practitioners who envision to work within information-based organizations, non-government organizations, international organizations, and central or local government departments. The programme is committed to carry out highly effective participatory approaches to managing and solving information

management problems in the communities. The programme is committed to carrying out highly effective participatory approaches to managing and solving library and information science problems affecting the industry.

The main objectives of this programme are:

- ✓ To train potential librarians/ information managers on the best and most participatory way to work in the information-based organizations
- ✓ To generate knowledge and professional skills in information management to enable leaders to make informed decisions
- ✓ To assist in building institutions that will ensure equitable sharing benefits of information
- ✓ To build capacity among information professionals working in public and private institutions

Programme Mode of Delivery

Masters in Library and Information Management is an 18–month, 18-unit (equivalent to 180 TCU Credits) programme. Master in Library and Information Management students will be required to undertake all core courses. The programme will be offered through blended mode where an e-learning platform (MOODLE) is mostly used, followed by a short face-to-face lecture session in three trimesters of taught coursework

In each trimester, two courses are taught and last for about 12 weeks.

Attendance to Face to Face is optional, but students are encouraged to attend and if not unable to, then students are encouraged to use Skype to follow class sessions. Participation in discussions through the MOODLE platform is compulsory for students and no one is allowed to sit for the final exam without effectively participating in MOODLE discussions. After coursework, students are supposed to work on their dissertations. If a student has passed coursework but failed to do (or pass) a dissertation beyond the allowable registration duration is offered an ex-Postgraduate Diploma.

Programme Structure

| Course Code | Course title |
|-------------|-------------------------------------------------------|
| OLM 600 | Fundamentals of Library and Information Management |
| OLM 601 | Organization of Knowledge |
| OLM 602 | Information and Communication Technology Applications |
| OLM 603 | Records Management and Archival Administration |
| OLM 604 | Management of Library and Information Centers |
| OLM 605 | Research Methodology |
| OLM 606 | Master’s Dissertation |

Doctor of Philosophy Degree (PhD)

To obtain admission to the PhD degree programme in the Faculty of Arts and Social Sciences of The Open University of Tanzania, a candidate should hold a relevant master’s degree of the OUT of equivalent standing from another approved University.

How does an aspirant register for a PhD? And for how long does it last?

- ✓The registration of PhD candidates shall follow a two-stage (stage I & II) process as prescribed for Masters-by-thesis candidates.
- ✓Candidates for the PhD shall be required to register at the beginning of the first year of their studies and to renew their registration at the beginning of each subsequent year. Failure to renew a registration shall mean automatic discontinuation from the studies.
- ✓A registered PhD candidate shall be assigned a supervisor(s) appointed by the Senate on the recommendation of the faculty. The supervisor(s) will be responsible for guiding the candidate in his/her research and shall, once every three months, submit reports on the candidate’s progress.
- ✓The duration of the registration period shall not exceed **five years**. Failure by the candidate to complete the PhD degree programme within the prescribed period shall lead to her or his

discontinuation from the study unless the Senate grants an extension. The maximum duration of the registration period shall not exceed **six years**

Part Four

List of FASS Staff

Dean's Office

Dean and Senior Lecturer

Dr. Dunlop Ochieng: Dip (Ed); B.A (Culture) Hons; M.A (Linguistics) UDSM, PhD (Germany)

Coordinator, Postgraduate Studies (PGS)

Dr. Fredrick Ladislaus Batinoluho: BSc in Horticulture (SUA); MSc in Protected Landscapes Management (Integrating Conservation and Development), Univ. of Wales, Aberystwyth, UK; MBA Corporate Management (Mzumbe University). PhD (OUT)

Faculty Examination Officers

Alexander Ndibalema Kaija: Certificate in Teaching Grade IIIA (Morogoro); Certificate in Fine Arts & Education (Butimba); BSW (Institute of Social Work); MSW (Open University of Tanzania)

Mr. Vincent Mpepo: BA (Mass Comm) UDSM; MA Mass Communication (OUT)

Faculty Planners

Mr. Manning Yusuph B.: Diploma in International Relations & Diplomacy, (Center for Foreign Relations) B.A. Public Relations & Marketing, Master of Arts in Mass Communication (SAUT)

Faculty Quality Assurance Coordinator

Ms. Celia Muyinga BA (Hons) Tourism Management, (Leads UK) MA Tourism Studies with Ecotourism, NAPIER, UNI, Scotland.

Faculty Consultancy and Community Outreach

Dr. Thereza Mugobi: BA Tourism and Management, University of Western Cape, Cape Town, SA: MA Economics and Communication (International Tourism), University of Lugano, Switzerland, PhD (OUT)

Administrative Staff

Senior Human Resources Management Officer and Faculty Administrator

Ms. Nuru Abdallah: MHRM (OUT); MBA & BSC. (SUA)

OMASEC II

Ms. Zitha Kessy: Diploma in Secretarial Studies (SSC), Diploma in Administration & Secretarial Studies (Pitman College - London UK), Management Development for Assistant Certificate – MDEA II (TPSC), Certificate on Secretarial – (VETA Technical College -Mbeya)

Department of Economics and Community Economic Development Staff

Head of Department

Dr. Emmanuel Nyankweli: BSc (Agriculture) (SUA), MA (Rural Development) (SUA), PhD (DS) (University of Amsterdam).

Associate Professor

Prof. Deus D. Ngaruko: BSc (Agric. Economics) Makerere University; MSc (Agric. Economics) SUA; DIC (Economics); PhD (Econ) Imperial College London

Senior Lecturer

Dr Felician Mutasa: BA (Econ)-UDSM, MA (Public Administration) Carleton, MA (Economic Policy and Planning) (ISS-The Hague); PhD (Econ) UDSM

Dr Christopher Awinia BA (DS); MA (DS) UDSM; PhD (OUT)

Dr. Harriet Mtae: Bsc (Human Nutrition) SUA; MA (Rural development) SUA; PhD (OUT)
Dr. Emmanuel Nyankweli: BSc (Agriculture) (SUA), MA (Rural Development) (SUA), PhD (DS)
(University of Amsterdam).
***Dr. Khatibu G.M. Kazungu: BA (Econ) UDSM, MA (Econ) UDSM, PGD (Mgt of Dev), Turin, MSc
(Econ) Manchester, PhD (Econ) Glasgow

Lecturers

Dr. Timothy Martin Lyanga: BA (ECON) OUT, MBA OUT, PhD (Econ) OUT
Dr. Noel Matemba: BA; MA (DS) UDSMA, PhD SUA.
Dr. Regina Malima: BA (Community Development) (Tengeru), MSc (CED) New Hampshire, PhD (Ds)
(SUA) Dr. Memba Diploma in Journalism (TSJ), B.A. (PSPA), M.A. (PS & PA) UDSM, Ph.D
(China)
Dr. Wambuka Rangi: Bsc. Home Economics and Human Nutrition (SUA), Master of Arts in Rural
Development (SUA) and PhD in Development Studies (OUT)
Dr. Edna Lyamuya MA (Agric economics), PhD (Agric Economics) (USSR)

Assistant Lecturers

Ms Nanzia Toroka: BA (Env. Mngt) Hons; MA (DS) UDSM
Ms. Rahma Mohamed: BA (UDSM), MA (DS) UDSM
Mr. Godfrey Gradius: BA Statistics (UDSM), MSc (ECON) OUT
Mr. Fidelis Kisusi: BA Reg. Dev Planning (IRDP), MA Rural Development (SUA).
Mr. Abdul Kilima: BA Econ (KIUU), MSc (Applied Economics and Business) Mzumbe
Ms. Zakia Ituja: BA Reg. Dev Planning (IRDP), MA Demography (UDOM).
Mr. Henry Tumaini: BA Econ (SAUT), MSc (ECON) OUT
Ms. Maria Erasmus: BA Econ (Mzumbe), MSc (ECON) OUT
Ms. Janeth Gwimile: B.Sc. (Computer Sc – Osmania, India), Cert. M& E (MSTCDC, Arusha), M.A.
M&E (OUT)
Ms. Josephine Minde: Dip(science) Monduli, Master of Rural Development (SUA)

Department of Political Science, Public Administration, History and Philosophy Staff

Head of Department and Lecturer

Dr. Jacob J. Lisakafu: BSc. (URP) Hons (UDSM), M.A. (Leipzig), PhD-International Relations and
Global Studies (Leipzig)

Senior Lecturers

Dr. Jacob J. Lisakafu: BSc. (URP) Hons (UDSM), M.A. (Leipzig), PhD-International Relations and
Global Studies (Leipzig)

Lecturers

Dr. Emmanuel J. Mallya: BA (Ed) (Hons) UDSM; MA (ISS-The Hague), PhD in Social Sciences
(Minority studies); University of Fernando Pessoa, Porto, Portugal
Dr. Miraji M. Kitigwa: BAPSPA (Hons); MA IR, PhD (UDSM)

Assistant Lecturers

Mr. Furaha Julius: BA PS&SO (Hons); MA IR (UDSM)
Mr. Twaha M. Katabaro: BAPSPA; MA PA (UDSM)
Mr. Ahmed I. Mussa: BA (Ed), UDSM; BAPA (OUT); MA PA (UDSM)
**Mr. Elias H. Mseti: BLGM, MPA (Mzumbe)
**Mr. Revocatus K. Bin'Omukama: BA PSPA; MPA (UDOM)
**Ms. Hiltruda Mahudi: B.A (History & Arch) Hons.; M.A (Arch), UDSM
**Rev. Alex Kasisi BA (Divinity) Makumira, MA (Theology) Makumira, PGD(Ed) OUT
**Mr. Paschal J Mheluka: BA in History (UDSM), PGDE (OUT), MA History (OUT)
**Mr. Nassor A. Suleiman: Dip (Ed) Zanzibar, BA (Ed) Hons in History (SUZA) Zanzibar, MA Hist.
(UDSM)
**Mr. Cosmas Kawonga BA (Ed)(Hons) Dar, MA History (OUT)
** *Academic Staff on study leave*

Tutorial Assistant

Manoni Mayalla: BA in History (UDSM)

Department of Linguistics and Literary Studies

Head of Department and Senior Lecturer

Dr. Zelda Elisifa: Dip (Ed) Marangu TC, B (Ed). UDSM, MA (Linguistic) UDSM, PhD (Linguistics) – OUT

Senior Lecturers

Dr. Dunlop. O. Ochieng; Dip (Ed); B.A (Culture) Hons; M.A (Linguistics) UDSM, PhD (Germany)
Dr. Zelda Elisifa: Dip (Ed) Marangu TC, B (Ed). UDSM, MA (Linguistic) UDSM, PhD (Linguistics) –OUT
Dr. Hadija Jilala: Dip (Ed); BEd Arts (Hons); M.A (Linguistics), PhD-Kiswahili (UDSM).

Lecturers

Dr. Omary Mohamed: B.A (Education) (UDSM); M.A (Kiswahili) (UDSM); M.A Development Studies (UDSM). PhD (Literature) (OUT)
Dr. Salma Hamad: BA (Ed) The State University of Zanzibar; MA (Linguistics) UDSM; PhD (UDSM)
Dr. Jacob Leopard: BA (Ed) (English) UDSM, MA Linguistics, (UDSM) PhD (NENU), China
Dr. Julius Francis; Dipl. (Education) BA (Education); MA (Linguistics), PhD (Linguistics), UDSM
Dr. Nasra Habibu: BA (Ed, Hons); M.A (Kiswahili) UDSM PhD OUT
Dr. Ancyfrida Prosper: BA (Hons), MEd (Western Cape), PhD (Education) (OUT)

Assistant Lecturers

Ms. Caroline Mugolozzi: Dipl (ED) Morogoro TC; BAED (DUCE) MA Lit (OUT)
Mr. Bakari Kombo Bakari: Dipl (ED) Nkurumah TTC; BA(Hons) Islamic University Uganda; MA Linguistics (OUT)
Mr. Constantine Njalambaya: BED (Psychology and French) UDSM; MA (DS) University of Geneva
Ms. Elizabeth Kyara: BA (ED) (Linguistics) UDSM; MA (Linguistics) UDSM
Mr. Mosi Mlibwa: BA(ED) (Linguistics + Geography) MUCE, MA (Linguistics) UDSM
Mr. Charles Lazaro: BA (ED) (Kiswahili + Linguistics) STEMMUCO, MA (Linguistics)SAUT.
Mr. Emmanuel Kisika: BA (ED) (Literature & Linguistics) MUCE, MA (Literature) UDSM
Mr. Emmanuel. O. Msangi: BA (Kiswahili) UDOM; MA (Kisw.) OUT

Tutorial Assistants

Mr. Faustine D. John: Dip (ED) Marangu TTC, BAED (Literature) OUT
Ms. Frida Mbwafu: Dip (Ed) Korogwe TTC; BED (Linguistic) UDSM
Ms. Theresia Mbogo: BA Kiswa (UDSM), Education (OUT)
Mr. Yohana John: BAED (UDOM), MED APPS (OUT)

Department of Geography, Tourism and Hospitality Services

Head of Department

Dr. Halima Kilungu: BSc. Wildlife Management (SUA), MSc. Integrated Water Resources Management (IWRM) UDSM, PhD –Tourism and Environmental Change-Climate: Wageningen University –The Netherlands

Associate Professors

Prof. Jumanne D. Kalwani: Dip. (Ed) Dar; B.A. (Ed) Hons; M.A (Demo); PhD (Geography) UDSM.
Prof. Magreth S. Bushesha: BA (Ed), MA, UDSM; PhD (Geography & Environmental Studies), Bradford, UK

Senior Lecturers

Dr. Emmanuel P. Mhache: B.A (Hons) (Land Use Planning & Environmental Studies); M.A (Geography and Environmental Management) UDSM; PGD–Poverty Analysis REPOA/ISS/ESRF, PGDE-OUT; PhD (Geography)-UDSM.

Dr. Cosmas B. M. Haule: Dip. (Ed) Korogwe; B.Ed (Hons) UDSM; MSc. Agric. Eng. (Land and Water Management Studies) SUA; Ph.D (Agronomy) SUA

Dr. Anna Wawa: BSc (Ed) Hons; M.A (Demo) UDSM, PhD (Environment) OUT.

Lecturers

Dr. Reguli B. Mushy: B.A (Ed) Hons, UDSM; M.A (Geography) UDSM; PGD- Poverty Analysis (REPOA/ISS/ESRF) PhD (Geography) (UDSM).

Dr. Elieza Y. Musana: Dip. (Ed): B.A (Ed); M.A. (Demo) UDSM, PhD. (OUT)

Dr. Emmanuel N. Kazuva: B.A. (Ed) OUT; MSc. NARAM (UDSM), PhD (NENU) China

Dr. Ruth W. John: Dip. (Ed) Butimba TTC; B.A. (Ed) Hons. MA Geography and Environmental Management (UDSM) PhD (UDSM)

Dr. Halima Kilungu: BSc. Wildlife Management (SUA), MSc. Integrated Water Resources Management (IWRM) UDSM, PhD –Tourism and Environmental and Climate Change: Wageningen University –The Netherlands

Dr. Fredrick Ladislaus Batinoluho: BSc in Horticulture (SUA); MSc in Protected Landscapes Management (Integrating Conservation and Development), Univ. of Wales, Aberystwyth, UK; MBA Corporate Management (Mzumbe University). PhD (OUT)

Dr. Thereza Mugobi: BA Tourism and Management, University of Western Cape, Cape Town, SA: MA Economics and Communication (International Tourism), University of Lugano, Switzerland, PhD (OUT)

Dr. Veronica Nyerere: BA-Tourism (Hons) Makerere; Master of International Business (UDSM), PhD (OUT)

Assistant Lecturers

Ms. Celia Muyinga BA (Hons) Tourism Management, (Leads UK) MA Tourism Studies with Ecotourism, NAPIER, UNI, Scotland.

Mr. Michael Patrick: BA-Tourism (Hons) Makerere MSc. Tourism Studies, Mid-Sweden University-Ostersund Sweden

Mr. Samwel Savunyo

Ms. Habiba Ally: B.A. (Ed); MSc. (Climate Change) (UDSM)

Tutorial Assistant

Ms Salome Massawe, BA-Tourism, OUT

**Mr Reginald Kimario, BSc-Tourism, SUA

** On study leave

Department of Media Studies and Library Services Staff

Head of Department and Lecturer

Dr. Henry L Mambo: BA (Public Admn and Intl Relation) Hons, MA Library Science, UK; PhD (Univ of Natal South Africa)

Senior Librarians

Dr. Henry L Mambo: BA (Public Admn and Intl Relation) Hons, MA Library Science, UK; PhD (Univ of Natal South Africa)

Dr. Athumani S. Samzugji: BA, MA Library & Information Science (St. Petersburg State Institute of Culture (Russia); PhD. (OUT)

Lecturers

Dr. Lilian Isowe: Dip. Ed. (Changómbe TTC); BEd Hons (UDSM), MA Information Studies (UDSM), PhD (Moi Univ)

Assistant Lecturers/librarians

Mr Bujo Ambosise: BA (Mass Comm), M.A. (Mass Comm) SAUTMs. Kahenga H. Dachi: Dip (Foreign Correspondence in Practice); B.A (P.R. and Advertising), MA (Mass Comm) UDSM.
Mr. Libe Chonya: Bachelor of Arts in Mass Communication (BAMC), SAUT; Master of Arts in Mass Communication (MAMC), SAU
Mr. Manning Yusuph B.: Diploma in International Relations & Diplomacy, (Center for Foreign Relations) B.A. Public Relations & Marketing, Master of Arts in Mass Communication (SAUT)
Mr. Vincent Mpepo: BA, MA (Mass Com) OUT
Mr. Mugisha Kafuma: BLIS (Makerere - Uganda), MSc.
Ms. Julieth Msuya: BSc. (Home Economics and Human Nutrition) (SUA); MA Information Studies (UDSM)
Mr. Nelson Msagati: B.Sc. Food Science and Technology (SUA); M.A. Information Studies (UDSM)
Ms. Chausiku Mwinyimbegu: Dip. in Librarianship (SLADS), B.Ed. Psychology (UDSM); M.A. Information Studies (UDSM)
Mr. Aziz H. Kagugu: BLIS (Makerere University); MA. Information Studies (UDSM).
Mr. Boniface Mbangala: BA (Education) (UDSM), M.A. Information Studies (UDSM).
Mr. Ntimi Kasumo: BALIS (Tumaini University), MA Information studies (UDSM)
Mr. Mugisha Kafuma: BLIS (Makerere - Uganda), MSc. Library Science (Northeast Normal University)

Tutorial Assistant

Husna Nurdin
Mr. Frank Charles- BALIS (Tumaini University)
Ms. Elinahamisa Mgaya -BALIS (Tumaini University)
Mr. Shaban Kangomba-BLIM (The Open University of Tanzania).

Department of Sociology and Social Work

Head of Department and Lecturer

Dr Mariana Makuu: Advanced Diploma in Social Work (ISW), Master of International Social Welfare and Health Services (Oslo University College, Norway), Doctor of Philosophy in Social Work (University of Botswana).

Lecturers

Dr. Jacqueline L. Bundala: B.A (Gen), Agra. M.A (Rural Sociology and Community Development). Ph.D. (Sociology), Agra.
Dr. Fauzia Mohamed: BA-(Hons) Sociology; MA-Sociology (UDSM); PhD-Sociology; L.S.E, U.K
Dr Mariana Makuu: Advanced Diploma in Social Work (ISW), Master of International Social Welfare and Health Services (Oslo University College, Norway), Doctor of Philosophy in Social Work (University of Botswana).
Dr Betty D. M. Mntambo: Dip. (Environmental Health Sciences) B.Sc. (Agriculture Education and extension), M.A (Rural Development), Sokoine University of Agriculture. PhD (International Development, University of East Anglia, Norwich, UK)
Dr. Buhori A. Johnas: B.A (Welfare Science & Development Studies), UNISA, Master of Social Work – University of Botswana; Doctor of Philosophy of The Open University of Tanzania (The OUT)
Ms. Chitegetse Minanago: B.A (Sociology), (hons); MA (Sociology) UDSM, PhD
Dr. Straton R. Kakoko: Dipl (Ed) Marangu Teachers' College, Moshi, B.A (Sociology), (hons), MA (Sociology), PhD UDSM

Assistant Lecturers

**Ms. Atuwene A. Mbelle: B.Ed (Psychology); M.A (ASP) UDSM
Ms. Sipa Yusuf Shaaban: Ordinary Diploma in Gender Issues & Development (Kivukoni Academy of Social Science); BSW (Institute of Social Work); MSW (Open University of Tanzania)

****Alexander Ndibalema Kaija:** Certificate in Teaching Grade IIIA (Morogoro); Certificate in Fine Arts & Education (Butimba); BSW (Institute of Social Work); MSW (Open University of Tanzania)

Mzungu, K. Jeddy: Certificate in Medical Laboratory Sciences (Bugando), Ordinary Diploma in Medical Laboratory Sciences, (UDSM), Adv. Diploma in Medical Laboratory Sciences (MUHAS), BASW (OUT).

Asia Mwanzi: BSW (Institute of Social Work); MSW (Open University of Tanzania).

Judith Shitindi: BA (Sociology) MA (Sociology) St. Augustine University of Tanzania, Mwanza.

Robert Kasili Makungu: Basic Certificate in Social Work (ISW), Diploma in Social Work (ISW), Bachelor in Social Work (ISW), Masters in Social Work (ISW).

Tutorial Assistants

Mr. Joseph Challe: BSW (Institute of Social Work)

Faudhia Kitenge: Certificate in Social Work (ISW), Certificate in Community based work with Children and Youth (ISW), Diploma in Social Work (ISW), Bachelor in Social Work (ISW).

Juventus R Jovin: BA (Sociology) UDSM.

Zabron S Buyoya: Mwenge Catholic University Moshi BA (Sociology and Social Work).

****On study leave**

FASS almanack

| Date | Day | Event | Responsible |
|-------------|------------|-----------------------------------------------------------|--------------------|
| 05-Aug-22 | Friday | FASS Board Meeting | DFASS |
| 05-Oct-22 | Wednesday | FASS Board Meeting | DFASS |
| 27-Jan-23 | Friday | FASS Board Meeting | DFASS |
| 06-Mar-23 | Monday | Beginning of SOSW Field Practicum | DFASS |
| 08-Apr-23 | Saturday | Field assessments for Journalism and Media Studies Starts | DFASS |
| 13-Apr-23 | Thursday | FASS Board Meeting | DFASS |
| 17-Apr-23 | Monday | End of SOSW Field Practicum | DFASS |
| 17-Apr-23 | Monday | PSPA Field Practicals Ends | DFASS |
| 21-Apr-23 | Sunday | Geography Field Practicals Begins | DFASS |
| 08-May-23 | Monday | Tourism Field Trip Begins | DFASS |
| 15-May-23 | Monday | Tourism Field Trip Ends | DFASS |
| 22-May-23 | Sunday | Geography Field Practical Ends | DFASS |
| 30-Jun-23 | Friday | Field assessments for Journalism and Media Studies Ends | DFASS |

FASS Programmes Fees per course

| Department of Media and Library Studies | | | | | | |
|------------------------------------------------|---------------------------------------------------------------------------------------------------------|------------------|--------------------|--------------|------------------|-----------------------|
| SN. | Course Name | Course ID | Course Code | Local | EAC (USD) | Non-SADC (USD) |
| 1 | News Reporting I | 473 | OJO 122 | 120000 | 80 | 160 |
| 2 | Introduction to Media Law and Ethics | 479 | OJO 123 | 120000 | 80 | 160 |
| 3 | English for the Media | 484 | OJO 125 | 60000 | 40 | 80 |
| 4 | Kiswahili kwa Wanahabari | 524 | OJO 126 | 60000 | 40 | 80 |
| 5 | Practicum 1 | 533 | OJO 124 | 100000 | 70 | 140 |
| 6 | Introduction to Journalism | 549 | OJO 121 | 120000 | 80 | 160 |
| 7 | Practicum II | 557 | OJO 220 | 200000 | 140 | 280 |
| 8 | News Reporting II | 561 | OJO 221 | 120000 | 80 | 160 |
| 9 | Feature and Opinion Writing | 564 | OJO 222 | 120000 | 80 | 160 |
| 10 | Photojournalism | 567 | OJO 223 | 60000 | 40 | 80 |
| 11 | Media Law and Ethics | 568 | OJO 224 | 120000 | 80 | 160 |
| 12 | Editing, Layout and Design | 577 | OJO 225 | 120000 | 80 | 160 |
| 13 | Media Research | 653 | OJO 226 | 120000 | 80 | 160 |
| 14 | Broadcasting: Radio and Television | 658 | OJO 227 | 120000 | 80 | 160 |
| 15 | Practicum III | 661 | OJO 320 | 100000 | 70 | 140 |
| 16 | Specialized Reporting: Edutainment, Court Reporting, Political Reporting, Business Reporting and Gender | 666 | OJO 321N | 120000 | 80 | 160 |
| 17 | New Media Technologies | 671 | OJO 322 | 120000 | 80 | 160 |
| 18 | Media Management | 676 | OJO 323 | 120000 | 80 | 160 |
| 19 | Investigative Journalism | 678 | OJO 324N | 120000 | 80 | 160 |
| 20 | Dissertation | 691 | OJO 325N | 500000 | 350 | 700 |
| 21 | Introduction to library and Information Science. | 692 | OLM 101 | 120000 | 80 | 160 |
| 22 | Organization of Knowledge | 705 | OLM 601 | 120000 | 80 | 160 |
| 23 | Information sources and Reference services | 706 | OLM 102 | 120000 | 80 | 160 |
| 24 | Information Society | 716 | OLM 103 | 120000 | 80 | 160 |
| 25 | Organization of knowledge | 722 | OLM 104 | 120000 | 80 | 160 |
| 26 | Fundamentals of Library and Information Management | 723 | OLM 600 | 120000 | 80 | 160 |
| 27 | Introduction to Mass Communication | 726 | OMC 121 | 120000 | 80 | 160 |
| 28 | News Reporting I | 727 | OMC 122 | 120000 | 80 | 160 |
| 29 | Information and Communication Technology Applications in LIS | 733 | OLM 602 | 360000 | 200 | 400 |
| 30 | Records Management and Archival Administration | 736 | OLM 603 | 360000 | 200 | 400 |
| 31 | Management of Library and Information Centers | 741 | OLM 604 | 360000 | 200 | 400 |
| 32 | Research Methodology | 746 | OLM 605 | 360000 | 200 | 400 |
| 33 | Information Technology and its application in LIS | 754 | OLM 201 | 120000 | 80 | 160 |
| 34 | Dissertation | 761 | OLM 699 | 1080000 | 600 | 1200 |
| 35 | Principles and Practices of Records Management | 763 | OLM 202 | 120000 | 80 | 160 |
| 36 | Collection Development and Management | 770 | OLM 203 | 120000 | 80 | 160 |
| 37 | Research Methods in Library and Information Sciences | 771 | OLM 204 | 120000 | 80 | 160 |

| | | | | | | |
|----|---------------------------------------------------------------------------------------------------------|------|---------|---------|-----|------|
| 38 | Publishing and Book Trade Industry | 773 | OLM 205 | 120000 | 80 | 160 |
| 39 | Practicum | 775 | OLM 206 | 200000 | 140 | 280 |
| 40 | Introduction to Media Law and Ethics | 777 | OMC 123 | 120000 | 80 | 160 |
| 41 | Information Systems Analysis, Design and Evaluation | 787 | OLM 207 | 120000 | 80 | 160 |
| 42 | Practicum 1 | 791 | OMC 124 | 100000 | 70 | 140 |
| 43 | Multimedia Studies | 793 | OLM 208 | 120000 | 80 | 160 |
| 44 | Multimedia Studies | 794 | OLM208 | 120000 | 80 | 160 |
| 45 | English for the Media | 796 | OMC 125 | 60000 | 40 | 80 |
| 46 | Information and Knowledge Management | 798 | OLM 301 | 120000 | 80 | 160 |
| 47 | Kiswahili kwa Wanahabari | 799 | OMC 126 | 60000 | 40 | 80 |
| 48 | Management of Libraries and Information Centers | 800 | OLM302 | 120000 | 80 | 160 |
| 49 | Research Methodology | 804 | OLM 605 | 360000 | 200 | 400 |
| 50 | Legal Issues and Professional Ethics in LIS | 806 | OLM 303 | 120000 | 80 | 160 |
| 51 | Entrepreneurship and Information marketing | 808 | OLM 304 | 120000 | 80 | 160 |
| 52 | Digital libraries | 809 | OLM305 | 120000 | 80 | 160 |
| 53 | Research Project | 810 | OLM 306 | 120000 | 80 | 160 |
| 54 | Information Systems and Services for people with special needs | 811 | OLM307 | 120000 | 80 | 160 |
| 55 | Database design, Management and Information Retrieval | 814 | OLM308 | 120000 | 80 | 160 |
| 56 | Practicum III | 816 | OMC 220 | 60000 | 40 | 80 |
| 57 | News Reporting II | 817 | OMC 221 | 120000 | 80 | 160 |
| 58 | International Issues in Mass Communication | 819 | OMC 222 | 60000 | 40 | 80 |
| 59 | Advertising I | 830 | OMC 223 | 60000 | 40 | 80 |
| 60 | Media Law and Ethics | 832 | OMC 224 | 120000 | 80 | 160 |
| 61 | Editing, Layout and Design | 833 | OMC 225 | 120000 | 80 | 160 |
| 62 | Media Research | 834 | OMC 226 | 120000 | 80 | 160 |
| 63 | Broadcasting: Radio and Television | 836 | OMC 227 | 120000 | 80 | 160 |
| 64 | Specialized Reporting: HIV/AIDS or Local Government or Environment | 838 | OMC 228 | 120000 | 80 | 160 |
| 65 | Public Relations | 840 | OMC 229 | 120000 | 80 | 160 |
| 66 | Practicum III | 843 | OMC 320 | 200000 | 140 | 280 |
| 67 | Specialized Reporting: Edutainment, Court Reporting, Political Reporting, Business Reporting and Gender | 853 | OMC 321 | 120000 | 80 | 160 |
| 68 | New Media Technologies | 855 | OMC 322 | 120000 | 80 | 160 |
| 69 | Media Management | 858 | OMC 323 | 120000 | 80 | 160 |
| 70 | Public Relations II | 861 | OMC 324 | 120000 | 80 | 160 |
| 71 | Dissertation | 867 | OMC 325 | 500000 | 350 | 700 |
| 72 | Advertising II | 870 | OMC 326 | 120000 | 80 | 160 |
| 73 | Mass Communication Theories and Models | 886 | OMC 600 | 360000 | 200 | 400 |
| 74 | Mass Communication Regulations | 890 | OMC 601 | 360000 | 200 | 400 |
| 75 | Mass Communication Ethics | 893 | OMC 602 | 360000 | 200 | 400 |
| 76 | Public Opinion and Media | 895 | OMC 603 | 360000 | 200 | 400 |
| 77 | Advanced Mass Communication Research Methodology | 900 | OMC 604 | 360000 | 200 | 400 |
| 78 | Dissertation | 1043 | OMC 605 | 1080000 | 600 | 1200 |

| 79 | Strategic Corporate Communication | 1045 | OMC 607 | 120000 | 80 | 160 |
|-----------------------------------------------------------------|--------------------------------------------------------------------|-----------|-------------|---------|-----------|----------------|
| 80 | Specialized Reporting: HIV/AIDS or Local Government or Environment | 1077 | OJO 228N | 120000 | 80 | 160 |
| 81 | Mass Communication Planning and Management | 1439 | OMC 606 | 360000 | 200 | 400 |
| Department of Geography, Tourism and Hospitality Studies | | | | | | |
| SN. | Course Name | Course ID | Course Code | Local | EAC (USD) | Non-SADC (USD) |
| 1 | Climatology studies | 21 | OGC 201 | 120000 | 80 | 160 |
| 2 | Introduction to tourism | 494 | OTM 101 | 120000 | 80 | 160 |
| 3 | Fundamentals of Wildlife Ecology | 497 | OTM 102 | 120000 | 80 | 160 |
| 4 | Integrated hospitality operations | 499 | OTM 103 | 120000 | 80 | 160 |
| 5 | Special Interest Tourism | 508 | OTM 104 | 120000 | 80 | 160 |
| 6 | Leisure and Recreation Tourism | 515 | OTM 105 | 120000 | 80 | 160 |
| 7 | Culture and Heritage Tourism | 520 | OTM 201 | 120000 | 80 | 160 |
| 8 | Tourism Statistics and Economics | 525 | OTM 202 | 120000 | 80 | 160 |
| 9 | Tourism policy and planning | 528 | OTM 203 | 120000 | 80 | 160 |
| 10 | Tourism Marketing and Promotion | 532 | OTM 204 | 120000 | 80 | 160 |
| 11 | Sustainable Tourism Development | 534 | OTM 205 | 120000 | 80 | 160 |
| 12 | Events Planning and Management | 540 | OTM 301 | 120000 | 80 | 160 |
| 13 | Travel and Tour Operations Management | 541 | OTM 302 | 120000 | 80 | 160 |
| 14 | Tourism Entrepreneurship | 542 | OTM 303 | 120000 | 80 | 160 |
| 15 | Tourism Field Study | 546 | OTM 305A | 200000 | 140 | 280 |
| 16 | Tourism Internship | 548 | OTM 305B | 200000 | 140 | 280 |
| 17 | Special Project | 550 | OTM 305C | 200000 | 140 | 280 |
| 18 | Theories and Practice of Tourism | 559 | OTM 601 | 360000 | 200 | 400 |
| 19 | Tourism Policy and Planning | 569 | OTM 602 | 360000 | 200 | 400 |
| 20 | Approaches to Hospitality Management | 570 | OTM 603 | 360000 | 200 | 400 |
| 21 | Tourism and Hospitality Entrepreneurship | 571 | OTM 604 | 360000 | 200 | 400 |
| 22 | Tourism Marketing and Promotion | 572 | OTM 605 | 360000 | 200 | 400 |
| 23 | Sustainable Tourism Development Management | 574 | OTM 606 | 360000 | 200 | 400 |
| 24 | Advanced Tourism Research Methods & Dissertation | 575 | OTM 608 | 1080000 | 400 | 800 |
| 25 | Introduction to Population Studies | 578 | OPD 101 | 120000 | 80 | 160 |
| 26 | Introduction to Population Studies | 579 | OPD 102 | 120000 | 80 | 160 |
| 27 | Introduction to Reproductive and Sexual Health | 580 | OPD 103 | 120000 | 80 | 160 |
| 28 | Medical Geography | 581 | OPD 104 | 120000 | 80 | 160 |
| 29 | Dynamics of Population Structure | 582 | OPD 201 | 120000 | 80 | 160 |
| 30 | Basic Demographic Methods | 583 | OPD 203 | 120000 | 80 | 160 |
| 31 | Gender, Health and Family Planning | 584 | OPD 301 | 120000 | 80 | 160 |
| 32 | GIS and Population Studies | 585 | OPD 302 | 120000 | 80 | 160 |
| 33 | GIS and Population Studies | 586 | OPD 302. | 120000 | 80 | 160 |
| 34 | GIS and Population Studies | 587 | OPD-302 | 120000 | 80 | 160 |
| 35 | Population Policy and Development | 588 | OPD 303 | 120000 | 80 | 160 |
| 36 | Population Migration and Development | 589 | OPD 304 | 120000 | 80 | 160 |
| 37 | Family Resources Management | 590 | OPD 305 | 120000 | 80 | 160 |
| 38 | Urban Systems, Planning and Management | 591 | OPD 306 | 120000 | 80 | 160 |
| 39 | Population, Environment and Development | 592 | OPD 307 | 120000 | 80 | 160 |

| | | | | | | |
|----|---------------------------------------------------------------------|------|---------|--------|-----|-----|
| 40 | Population, Environment and Development | 593 | OPD-307 | 120000 | 80 | 160 |
| 41 | Nutrition for Health | 594 | OPD 308 | 120000 | 80 | 160 |
| 42 | African Environment and Development | 595 | OPD 309 | 120000 | 80 | 160 |
| 43 | Rural Settlement and Development | 596 | OPD 310 | 120000 | 80 | 160 |
| 44 | Gender and Development | 598 | OPD_202 | 120000 | 80 | 160 |
| 45 | Background to Natural Resources | 599 | ORM 101 | 120000 | 80 | 160 |
| 46 | Introduction to Population, Resources and Development | 600 | ORM 102 | 120000 | 80 | 160 |
| 47 | Introduction to Geographic Techniques | 601 | ORM 103 | 120000 | 80 | 160 |
| 48 | Climatology | 602 | ORM 104 | 120000 | 80 | 160 |
| 49 | Introduction to Human Geography | 603 | ORM 105 | 120000 | 80 | 160 |
| 50 | Gender and Natural Resources Management | 604 | ORM 106 | 120000 | 80 | 160 |
| 51 | Mineral and Energy Resources | 605 | ORM 201 | 120000 | 80 | 160 |
| 52 | Mineral and Energy Resources | 606 | ORM-201 | 120000 | 80 | 160 |
| 53 | Remote Sensing and Geographical Information Systems | 607 | ORM 202 | 120000 | 80 | 160 |
| 54 | Social Research Methods in Geography | 608 | ORM 203 | 120000 | 80 | 160 |
| 55 | Geography Field Practicals | 609 | ORM 204 | 200000 | 140 | 280 |
| 56 | Environmental and Natural Disasters Management | 610 | ORM 205 | 120000 | 80 | 160 |
| 57 | Population and Poverty Studies | 611 | ORM 206 | 120000 | 80 | 160 |
| 58 | Urban Planning and Management | 612 | ORM 207 | 120000 | 80 | 160 |
| 59 | Ecology of Natural Resources | 613 | ORM 208 | 120000 | 80 | 160 |
| 60 | Environmental Economics | 614 | ORM 301 | 120000 | 80 | 160 |
| 61 | Policy Issues in Natural Resources Management | 615 | ORM 302 | 120000 | 80 | 160 |
| 62 | Environmental Impact Assessment | 616 | ORM 303 | 120000 | 80 | 160 |
| 63 | Climate Change and Environmental Resources Management | 618 | ORM 304 | 120000 | 80 | 160 |
| 64 | Biodiversity Monitoring, Conservation and Management | 619 | ORM 305 | 120000 | 80 | 160 |
| 65 | Land Evaluation and Land Use Planning | 620 | ORM 306 | 120000 | 80 | 160 |
| 66 | Geography Field Practicals | 621 | OPD 209 | 200000 | 140 | 280 |
| 67 | Contemporary Issues in Natural resources Assessment and Management | 686 | ORM 601 | 360000 | 200 | 400 |
| 68 | Environmental and Natural Resources Economics | 690 | ORM 602 | 360000 | 200 | 400 |
| 69 | Environmental and Social Impact Assessment | 693 | ORM 603 | 360000 | 200 | 400 |
| 70 | Population Dynamics and Natural Resources Management | 695 | ORM 604 | 360000 | 200 | 400 |
| 71 | Applied GIS and Remote Sensing for Natural Resources Assessment f | 697 | ORM 605 | 360000 | 200 | 400 |
| 72 | Research Methodology and Techniques in Natural Resources Assessment | 701 | ORM 606 | 360000 | 200 | 400 |
| 73 | Biodiversity Conservation and Ecosystem Services | 704 | ORM 609 | 360000 | 200 | 400 |
| 74 | Dissertation | 708 | ORM 699 | 720000 | 400 | 800 |
| 75 | Background to Physical Resources | 1533 | OGE 121 | 120000 | 80 | 160 |
| 76 | Introduction to Human Geography | 1534 | OGE 122 | 120000 | 80 | 160 |
| 77 | Introduction to Geographical Techniques | 1535 | OGE 123 | 120000 | 80 | 160 |
| 78 | Physical Resources | 1536 | OGE 221 | 120000 | 80 | 160 |

| 79 | Remote Sensing and Quantitative Methods in Geography | 1537 | OGE 223 | 120000 | 80 | 160 |
|-------------------------------------------------------|------------------------------------------------------|-----------|-------------|--------|-----------|----------------|
| 80 | Population and Development | 1538 | OGE 225 | 120000 | 80 | 160 |
| 81 | Geography Field Practicals | 1539 | OGE 229 | 200000 | 140 | 280 |
| 82 | Population, Resources and Development | 1540 | OGE 322 | 120000 | 80 | 160 |
| 83 | The African Environment and Development | 1541 | OGE 326 | 120000 | 80 | 160 |
| Department of Linguistics and Literary Studies | | | | | | |
| SN. | Course Name | Course ID | Course Code | Local | EAC (USD) | Non SADC (USD) |
| 1 | Utangulizi wa Lugha na Isimu | 119 | OSW 131 | 120000 | 80 | 160 |
| 2 | Historia ya Kiswahili na Lahaja zake | 120 | OSW 132 | 120000 | 80 | 160 |
| 3 | Fasihi ya Kiswahili Nadharia na Uhakiki | 121 | OSW 133 | 120000 | 80 | 160 |
| 4 | Tafsiri: Nadharia na Mbinu | 122 | OSW 134 | 120000 | 80 | 160 |
| 5 | Sarufi ya Kiswahili na Sintaksia | 126 | OSW 231 | 120000 | 80 | 160 |
| 6 | Fonetiki na Fonolojia ya Kiswahili | 127 | OSW 232 | 120000 | 80 | 160 |
| 7 | Mofolojia ya Kiswahili | 128 | OSW 233 | 120000 | 80 | 160 |
| 8 | Fasihi Simulizi | 129 | OSW 234 | 120000 | 80 | 160 |
| 9 | Mbinu za Utafiti katika Taaluma za Lugha na Fasihi | 130 | OSW 235 | 120000 | 80 | 160 |
| 10 | Semantikia ya Kiswahili | 131 | OSW 236 | 120000 | 80 | 160 |
| 11 | Ubunifu na Uandishi wa Skripti za Filamu | 132 | OSW 237 | 120000 | 80 | 160 |
| 12 | Leksikografia | 133 | OSW 238 | 120000 | 80 | 160 |
| 13 | Fasihi Linganishi | 134 | OSW 239 | 120000 | 80 | 160 |
| 14 | Riwaya ya Kiswahili | 135 | OSW 331 | 120000 | 80 | 160 |
| 15 | Tamthiliya ya Kiswahili | 136 | OSW 332 | 120000 | 80 | 160 |
| 16 | Ushairi wa Kiswahili | 137 | OSW 333 | 120000 | 80 | 160 |
| 17 | Uhakiki wa Filamu | 138 | OSW 334 | 120000 | 80 | 160 |
| 18 | Isimujamii | 139 | OSW 335 | 120000 | 80 | 160 |
| 19 | Research Project in Kiswahili | 140 | OSW 336 | 200000 | 140 | 280 |
| 20 | Elimumitindo | 141 | OSW 337 | 120000 | 80 | 160 |
| 21 | Introduction to Language and Linguistics | 142 | OLL 131 | 120000 | 80 | 160 |
| 22 | English Structure | 143 | OLL 132 | 120000 | 80 | 160 |
| 23 | Literary Theory and Criticism | 144 | OLT 131 | 120000 | 80 | 160 |
| 24 | Studies in African Literatures | 145 | OLT 132 | 120000 | 80 | 160 |
| 25 | Phonetics and Phonology | 274 | OLL 235 | 120000 | 80 | 160 |
| 26 | Introduction to Functional Grammar | 437 | OLL 133 | 120000 | 80 | 160 |
| 27 | Language Contact | 438 | OLL 134 | 120000 | 80 | 160 |
| 28 | Language Acquisition Theories | 439 | OLL 135 | 120000 | 80 | 160 |
| 29 | History and Development of English | 440 | OLL 136 | 120000 | 80 | 160 |
| 30 | Semantics and Pragmatics | 441 | OLL 335 | 120000 | 80 | 160 |
| 31 | Discourse Analysis | 442 | OLL 231 | 120000 | 80 | 160 |
| 32 | Morphology | 443 | OLL 232 | 120000 | 80 | 160 |
| 33 | Introduction to Syntax | 444 | OLL 233 | 120000 | 80 | 160 |
| 34 | History and Comparative Linguistics | 445 | OLL 234 | 120000 | 80 | 160 |
| 35 | Language and Literature | 446 | OLT 133 | 120000 | 80 | 160 |
| 36 | Applied Linguistics | 447 | OLL 236 | 120000 | 80 | 160 |
| 37 | Translation Theory and Practice | 448 | OLL 237 | 120000 | 80 | 160 |
| 38 | Lexicography | 449 | OLL 238 | 120000 | 80 | 160 |

| 39 | Contemporary Linguistics Theories | 450 | OLL 331 | 120000 | 80 | 160 |
|------------------------------------------------|---------------------------------------------|------------------|--------------------|--------------|------------------|-----------------------|
| 40 | Language and Gender | 451 | OLL 332N | 120000 | 80 | 160 |
| 41 | Sociolinguistics | 452 | OLL 333N | 120000 | 80 | 160 |
| 42 | Research Methodology | 453 | OLL 334 | 120000 | 80 | 160 |
| 43 | Semantics and Pragmatics | 454 | OLL 335N | 120000 | 80 | 160 |
| 44 | Advanced English Syntax | 455 | OLL 336N | 120000 | 80 | 160 |
| 45 | Research Project in Translation/Linguistics | 456 | OLL 337 | 200000 | 140 | 240 |
| 46 | Creative Writing for Fiction | 498 | OLT 134 | 120000 | 80 | 160 |
| 47 | Introduction to Drama | 500 | OLT 135 | 120000 | 80 | 160 |
| 48 | African Woman Writers | 501 | OLT 136 | 120000 | 80 | 160 |
| 49 | Literary Stylistics | 504 | OLT 231 | 120000 | 80 | 160 |
| 50 | Poetry | 505 | OLT 232 | 120000 | 80 | 160 |
| 51 | Folklore and Oral Literature | 507 | OLT 233 | 120000 | 80 | 160 |
| 52 | Research Methodology | 510 | OLT 234 | 120000 | 80 | 160 |
| 53 | Rise of the Novel | 511 | OLT 235 | 120000 | 80 | 160 |
| 54 | Contemporary Trends in African Literature | 512 | OLT 236 | 120000 | 80 | 160 |
| 55 | Introduction to Film Studies | 514 | OLT 237 | 120000 | 80 | 160 |
| 56 | Comparative Literature | 516 | OLT 331 | 120000 | 80 | 160 |
| 57 | African American Literature | 519 | OLT 332 | 120000 | 80 | 160 |
| 58 | Studies in European Literature | 523 | OLT 333 | 120000 | 80 | 160 |
| 59 | Gender and Literature | 526 | OLT 334 | 120000 | 80 | 160 |
| 60 | The Short Story | 527 | OLT 335 | 120000 | 80 | 160 |
| 61 | Creative Writing Project | 535 | OLT 337 | 200000 | 140 | 280 |
| 62 | Research Project | 543 | OLT 336 | 200000 | 140 | 280 |
| 63 | Classical & Modern Poetry | 622 | OSW 601 | 360000 | 200 | 400 |
| 64 | Thesis writing | 623 | OSW 617 | 1080000 | 600 | 1200 |
| 65 | Kiswahili Drama | 624 | OSW 602 | 360000 | 200 | 400 |
| 66 | Research Methodology | 625 | OSW 616 | 360000 | 200 | 400 |
| 67 | Kiswahili Novel | 626 | OSW 603 | 360000 | 200 | 400 |
| 68 | Kiswahili Lexicography | 627 | OSW 615 | 360000 | 200 | 400 |
| 69 | Translation: Theory and Practice | 628 | OSW 614 | 360000 | 200 | 400 |
| 70 | Social Linguistics | 629 | OSW 613 | 360000 | 200 | 400 |
| 71 | Theories of Literary Criticism | 630 | OSW 604 | 360000 | 200 | 400 |
| 72 | History of Kiswahili Dialect | 632 | OSW 612 | 360000 | 200 | 400 |
| 73 | A Selected Author | 633 | OSW 605 | 360000 | 200 | 400 |
| 74 | Kiswahili Semantics | 634 | OSW 611 | 360000 | 200 | 400 |
| 75 | Oral Literature | 635 | OSW 606 | 360000 | 200 | 400 |
| 76 | Kiswahili Syntax | 636 | OSW 610 | 360000 | 200 | 400 |
| 77 | Kiswahili Morphology | 637 | OSW 609 | 360000 | 200 | 400 |
| 78 | Kiswahili Phonology | 638 | OSW 608 | 360000 | 200 | 400 |
| 79 | Film Criticism | 639 | OSW 607 | 360000 | 200 | 400 |
| 80 | French for Beginners | 996 | FR 1 | 120000 | 200 | 400 |
| 81 | French Intermediate Level | 997 | FR 2 | 120000 | 200 | 400 |
| Department of Sociology and Social Work | | | | | | |
| SN. | Course Name | Course ID | Course Code | Local | EAC (USD) | Non-SADC (USD) |
| 1 | Introduction to Social Psychology | 118 | OSS 124 | 120000 | 80 | 160 |
| 2 | Basics of Social Work | 457 | SWT 04101 | 60000 | 40 | 80 |

| | | | | | | |
|----|-----------------------------------------------------|------|-----------|---------|-----|------|
| 3 | Social Work Values and Ethics | 458 | SWT 04102 | 60000 | 40 | 80 |
| 4 | Information Communication Technology in Social Work | 459 | SWT 04103 | 60000 | 40 | 80 |
| 5 | Social Work Practice in Health Care | 460 | SWT 04204 | 60000 | 40 | 80 |
| 6 | Social Psychology for Social Workers | 461 | SWT 04205 | 60000 | 40 | 80 |
| 7 | Fundamentals of Sociology | 463 | SWT 04106 | 60000 | 40 | 80 |
| 8 | Human Rights and Gender in Social work Practice | 464 | SWT 04207 | 60000 | 40 | 80 |
| 9 | Fundamentals of Social Empowerment | 466 | SWT 04208 | 60000 | 40 | 80 |
| 10 | Psychology for Social Workers | 468 | SWT 04109 | 60000 | 40 | 80 |
| 11 | Social Welfare Services | 469 | SWT 04110 | 60000 | 40 | 80 |
| 12 | Basics of Social Work Field Instructions | 470 | SWT 04211 | 60000 | 40 | 80 |
| 13 | Introduction to Social Work | 471 | OSP 101 | 120000 | 80 | 160 |
| 14 | Block Field Work Practice | 472 | SWT 04212 | 200000 | 140 | 280 |
| 15 | Social Work Professional Ethics | 475 | OSP 102 | 120000 | 80 | 160 |
| 16 | Social Work Research Methods I | 477 | OSP 103 | 120000 | 80 | 160 |
| 17 | Psychology for Social Workers | 478 | OSP 104 | 120000 | 80 | 160 |
| 18 | Human Behaviour and Social Environment | 481 | OSP 201 | 120000 | 80 | 160 |
| 19 | Empowering Marginalized Populations | 487 | OSP 202 | 120000 | 80 | 160 |
| 20 | Introduction to Social Welfare Policies | 502 | OSP 203 | 120000 | 80 | 160 |
| 21 | Social Work Practice with Individuals and Families | 503 | OSP 204 | 120000 | 80 | 160 |
| 22 | Social Work Practice with Groups | 506 | OSP 205 | 120000 | 80 | 160 |
| 23 | Social Work Practice with Organization | 509 | OSP 206 | 120000 | 80 | 160 |
| 24 | Social Work Practice with Communities | 513 | OSP 207 | 120000 | 80 | 160 |
| 25 | Introduction to Field Practice | 518 | OSP 208 | 200000 | 140 | 280 |
| 26 | Social Welfare Policy, Analysis and Evaluation | 522 | OSP 301 | 120000 | 80 | 160 |
| 27 | Block Field Practice | 538 | OSP 304 | 200000 | 140 | 280 |
| 28 | Social Work Research Methods II | 547 | OSP 302 | 120000 | 80 | 160 |
| 29 | Social Work Research Project | 553 | OSP 303 | 200000 | 140 | 280 |
| 30 | Communication skills | 839 | SWT 05101 | 60000 | 40 | 80 |
| 31 | Guidance and Counselling | 841 | SWT 05102 | 120000 | 80 | 160 |
| 32 | Advanced Clinical Social Work | 1057 | OSP 602 | 360000 | 200 | 400 |
| 33 | Advanced Administrative and Community Social Work | 1058 | OSP 603 | 360000 | 200 | 400 |
| 34 | Advanced Social Welfare Services | 1059 | OSP 604 | 360000 | 200 | 400 |
| 35 | Advanced Social Work Research | 1060 | OSP 605 | 360000 | 200 | 400 |
| 36 | Advanced Field Practice | 1061 | OSP 606 | 420000 | 280 | 560 |
| 37 | Dissertation | 1062 | OSP 607 | 1080000 | 600 | 1200 |
| 38 | Leadership with Children and Families Services | 1063 | OSP 610 | 360000 | 200 | 400 |
| 39 | Leadership in Health Services | 1064 | OSP 611 | 360000 | 200 | 400 |

| | | | | | | |
|----|--------------------------------------------------------------------------|------|-----------|---------|-----|------|
| 40 | Leadership in Development & Emergency Response | 1065 | OSP 612 | 360000 | 200 | 400 |
| 41 | Leadership in Social Work Education | 1066 | OSP 613 | 360000 | 200 | 400 |
| 42 | Social Work Professional Ethics | 1069 | OSP 501 | 360000 | 200 | 400 |
| 43 | Human Behaviour and the Social Environment | 1070 | OSP 503 | 360000 | 200 | 400 |
| 44 | Social Work Practice with Individuals and Families | 1071 | OSP 504 | 360000 | 200 | 400 |
| 45 | Social Work Practice with Organizations | 1072 | OSP 506 | 360000 | 200 | 400 |
| 46 | Introduction to Field Practice | 1073 | OSP 508 | 360000 | 200 | 400 |
| 47 | Social Welfare Policy Analysis and Evaluation | 1074 | OSP 509 | 360000 | 200 | 400 |
| 48 | Field Practice (Block) | 1075 | OSP 510 | 420000 | 280 | 560 |
| 49 | Feminist/Gender Theories | 1201 | OGS 600 | 360000 | 200 | 400 |
| 50 | Principles of Gender Construction, Deconstruction & Gender Mainstreaming | 1202 | OGS 601 | 360000 | 200 | 400 |
| 51 | Gender and Development | 1203 | OGS 603 | 360000 | 200 | 400 |
| 52 | Gender Research Methodology | 1204 | OGS 604N | 360000 | 200 | 400 |
| 53 | Gender, Technology & Education | 1205 | OGS 605 | 360000 | 200 | 400 |
| 54 | Gender, Health & Social Issues | 1206 | OGS 606 | 360000 | 200 | 400 |
| 55 | Gender, Food and Environment | 1207 | OGS 607 | 360000 | 200 | 400 |
| 56 | Gender Language, Literature & Culture | 1208 | OGS 608 | 360000 | 200 | 400 |
| 57 | Gender & Community Economics | 1213 | OGS 602 | 360000 | 200 | 400 |
| 58 | Dissertation | 1217 | OGS 614N | 1080000 | 600 | 1200 |
| 59 | Introduction to Sociology | 1251 | OSS 121 | 120000 | 80 | 160 |
| 60 | Introduction to Social Science Research Methods | 1252 | OSS 122 | 120000 | 80 | 160 |
| 61 | Classical Sociological Theory | 1253 | OSS 123 | 120000 | 80 | 160 |
| 62 | Critical Thinking and Argumentation | 1293 | OSS 125 | 120000 | 80 | 160 |
| 63 | Contemporary Sociological Theory | 1294 | OSS 221 | 120000 | 80 | 160 |
| 64 | Social Science Research Methods | 1295 | OSS 222 | 120000 | 80 | 160 |
| 65 | Field Practice | 1296 | OSS 223 | 200000 | 140 | 280 |
| 66 | Cultural Anthropology | 1297 | OSS 224 | 120000 | 80 | 160 |
| 67 | Medical Sociology | 1424 | OSS 225 | 120000 | 80 | 160 |
| 68 | Population and Development | 1425 | OSS 226 | 120000 | 80 | 160 |
| 69 | Introduction to Social Policies | 1426 | OSS 227 | 120000 | 80 | 160 |
| 70 | Community Development | 1427 | OSS 228 | 120000 | 80 | 160 |
| 71 | Social Welfare Services | 1428 | OSS 229 | 120000 | 80 | 160 |
| 72 | Sociology of Knowledge | 1429 | OSS 321 | 120000 | 80 | 160 |
| 73 | Poverty, Wealth and Inequality | 1430 | OSS 322 | 120000 | 80 | 160 |
| 74 | Globalization and Social Problems | 1431 | OSS 323 | 120000 | 80 | 160 |
| 75 | Health Systems in Tanzania | 1432 | OSS 325 | 120000 | 80 | 160 |
| 76 | Reproductive Health | 1433 | OSS 326 | 120000 | 80 | 160 |
| 77 | Social Policy Analysis | 1434 | OSS 327 | 120000 | 80 | 160 |
| 78 | Gender and Development | 1435 | OSS 328 | 120000 | 80 | 160 |
| 79 | Social Planning and Evaluation | 1436 | OSS 329 | 120000 | 80 | 160 |
| 80 | Stratification, Class and Health | 1437 | OSS 330 | 120000 | 80 | 160 |
| 81 | Introduction to Sociology and Anthropology | 1438 | OSS 102 | 120000 | 80 | 160 |
| 82 | Social Work and Law | 1480 | SWT 05209 | 180000 | 100 | 200 |

| | | | | | | |
|-----|------------------------------------------------------------|------|--------------|--------|-----|-----|
| 83 | Applied Social Welfare Laws | 1481 | SWT 06202 | 180000 | 100 | 200 |
| 84 | Social Welfare Policy and Services | 1482 | SWT 05103 | 180000 | 100 | 200 |
| 85 | Social Work Practice | 1483 | SWT 05104 | 100000 | 70 | 140 |
| 86 | Basic Statistics for Social Workers | 1484 | SWT 05105 | 180000 | 100 | 200 |
| 87 | Social Work Case Management | 1485 | SWT 05106 | 180000 | 100 | 200 |
| 88 | Introduction to Entrepreneurship skills | 1486 | SWT05207 | 180000 | 100 | 200 |
| 89 | Social Advocacy and Empowerment | 1487 | SWT 05208 | 180000 | 100 | 200 |
| 90 | Social policy | 1488 | SWT06101 | 180000 | 100 | 200 |
| 91 | Resource mobilization for social welfare services | 1489 | SWT06103 | 180000 | 100 | 200 |
| 92 | Rehabilitation services in social work practice | 1501 | SWT06104 | 180000 | 100 | 200 |
| 93 | Administration of social welfare resources | 1502 | SWT06107 | 180000 | 100 | 200 |
| 94 | Social Work best practices | 1503 | SWT06108 | 180000 | 100 | 200 |
| 95 | Basic Leadership and Administration Skills | 1504 | SWT06109 | 180000 | 100 | 200 |
| 96 | Social Work Research Methods | 1505 | SWT06205 | 180000 | 100 | 200 |
| 97 | Social Work interventions in HIV and AIDS | 1506 | SWT06210 | 180000 | 100 | 200 |
| 98 | Quality Assurance & Improvement in Social Welfare Services | 1507 | SWT06211 | 180000 | 100 | 200 |
| 99 | Social Advocacy and Empowerment | 1508 | SWT05208 | 180000 | 100 | 200 |
| 100 | Block Field Work Practice | 1526 | SWT05211 | 200000 | 140 | 280 |
| 101 | Social Work Field Instruction | 1531 | SWT05210 | 180000 | 100 | 200 |
| 102 | Block Field Practice | 1532 | SWT06212 | 200000 | 140 | 280 |

Department of Economics and Community Economic Development

| SN. | Course Name | Course ID | Course Code | Local | EAC (USD) | Non SADC (USD) |
|-----|-------------------------------------------------|-----------|-------------|--------|-----------|----------------|
| 1 | History of Economics Thought | 462 | OEC 130 | 120000 | 80 | 160 |
| 2 | Introduction to Microeconomics | 465 | OEC 131 | 120000 | 80 | 160 |
| 3 | Introduction to Macroeconomics | 467 | OEC 132 | 120000 | 80 | 160 |
| 4 | Basic Mathematics and Statistics for Economists | 474 | OEC 133 | 120000 | 80 | 160 |
| 5 | Social Science Research Methods | 480 | OEC 134 | 120000 | 80 | 160 |
| 6 | Intermediate Microeconomics | 482 | OEC 230 | 120000 | 80 | 160 |
| 7 | Intermediate Macroeconomics | 483 | OEC 231 | 120000 | 80 | 160 |
| 8 | Development Economics | 485 | OEC 232 | 120000 | 80 | 160 |
| 9 | Quantitative Methods for Economists | 486 | OEC 233 | 120000 | 80 | 160 |
| 10 | Econometrics | 488 | OEC 234 | 120000 | 80 | 160 |
| 11 | Corporate Finance and Investments | 489 | OEC 235 | 120000 | 80 | 160 |
| 12 | Monetary Economics | 490 | OEC 330 | 120000 | 80 | 160 |
| 13 | International Economics | 491 | OEC 331 | 120000 | 80 | 160 |
| 14 | Public Economics | 492 | OEC 332 | 120000 | 80 | 160 |
| 15 | Industrial Economics | 493 | OEC 333 | 120000 | 80 | 160 |
| 16 | Labour Economics | 495 | OEC 334 | 120000 | 80 | 160 |
| 17 | Agricultural Economics | 496 | OEC 335 | 120000 | 80 | 160 |
| 18 | Fundamentals of Project Planning and Management | 517 | OEC 620 | 360000 | 200 | 400 |

| | | | | | | |
|----|-------------------------------------------------------|------|----------|---------|-----|------|
| 19 | Advanced Microeconomics | 521 | OEC 600 | 360000 | 200 | 400 |
| 20 | Advanced Macroeconomics | 529 | OEC 601 | 360000 | 200 | 400 |
| 21 | Principles and Practices of Monitoring and Evaluation | 530 | OEC 621 | 360000 | 200 | 400 |
| 22 | Advanced Mathematics | 531 | OEC 602 | 360000 | 200 | 400 |
| 23 | Advanced Econometrics | 536 | OEC 603 | 360000 | 200 | 400 |
| 24 | Research Methods and Statistics for Impact Evaluation | 537 | OEC 622 | 360000 | 200 | 400 |
| 25 | Macroeconomic Policy for Developing Countries | 539 | OEC 604 | 360000 | 200 | 400 |
| 26 | Planning for Monitoring and Evaluation System | 544 | OEC 623 | 360000 | 200 | 400 |
| 27 | International Economics | 545 | OEC 605 | 360000 | 200 | 400 |
| 28 | Designing for Monitoring and Evaluation System | 551 | OEC 624 | 360000 | 200 | 400 |
| 29 | Monetary Economics | 552 | OEC 606 | 360000 | 200 | 400 |
| 30 | Public Economics | 554 | OEC 607 | 360000 | 200 | 400 |
| 31 | Cost Benefit Analysis | 555 | OEC 625 | 360000 | 200 | 400 |
| 32 | Development Economics | 556 | OEC 608 | 360000 | 200 | 400 |
| 33 | Financial Economics | 558 | OEC 609 | 360000 | 200 | 400 |
| 34 | Economics of Money, Banking and Financial Markets | 560 | OEC 610 | 360000 | 200 | 400 |
| 35 | Risk Management in Monitoring and Evaluation | 562 | OEC 626 | 360000 | 200 | 400 |
| 36 | Environmental and Social Impact Assessment | 563 | OEC 627 | 360000 | 200 | 400 |
| 37 | Research Design and Methods for Economics | 565 | OEC 613 | 360000 | 200 | 400 |
| 38 | Environmental Economics | 566 | OEC 611 | 360000 | 200 | 400 |
| 39 | Dissertation | 573 | OEC 699 | 1080000 | 600 | 1200 |
| 40 | Resource Mobilization and Management for CED Projects | 694 | CED 222 | 120000 | 80 | 160 |
| 41 | Rural Livelihoods and Sustainable Development | 715 | CED 325 | 120000 | 80 | 160 |
| 42 | Project Monitoring and Evaluation | 728 | CED 321 | 120000 | 80 | 160 |
| 43 | Organizational Management for CED | 737 | CED 225 | 120000 | 80 | 160 |
| 44 | CED Project Management | 739 | CED 224 | 120000 | 80 | 160 |
| 45 | Poverty Analysis and Intervention | 745 | CED 223 | 120000 | 80 | 160 |
| 46 | Resource Mobilization and Management for CED Projects | 751 | CED 222 | 120000 | 80 | 160 |
| 47 | Microfinance Management | 755 | CED 221 | 120000 | 80 | 160 |
| 48 | SMEs and Development | 760 | CED 123 | 120000 | 80 | 160 |
| 49 | Economics for CED | 762 | CED 122 | 120000 | 80 | 160 |
| 50 | Principles of CED | 764 | CED 121 | 120000 | 80 | 160 |
| 51 | Gender Issues in CED | 801 | CED 306 | 120000 | 80 | 160 |
| 52 | Development as a Tool for Conflict Resolution | 803 | CED 324 | 120000 | 80 | 160 |
| 53 | Sustainable Responses to Environmental Problems | 805 | CED 323 | 120000 | 80 | 160 |
| 54 | Community Needs Assessment | 807 | CED 322 | 120000 | 80 | 160 |
| 55 | Concepts and theories of Development | 812 | ODS 101A | 60000 | 40 | 80 |
| 56 | Political and Social Development | 813 | ODS 101C | 120000 | 80 | 160 |
| 57 | Fundamentals of Result Based Project | 1003 | OEC 011 | 120000 | 80 | 160 |

| | | | | | | |
|----|-------------------------------------------------------|------|-----------|---------|-----|------|
| 58 | M&E Principles and Approaches | 1005 | OEC 012 | 120000 | 80 | 160 |
| 59 | M&E Planning and Implementation | 1006 | OEC 013 | 120000 | 80 | 160 |
| 60 | Applied Mathematics for Project | 1008 | OEC 014 | 120000 | 80 | 160 |
| 61 | Impact Evaluation Methods | 1009 | OEC 021 | 120000 | 80 | 160 |
| 62 | Field protocol & report writing | 1010 | OEC 022 | 120000 | 80 | 160 |
| 63 | M&E in Public Sector | 1011 | OEC 023 | 120000 | 80 | 160 |
| 64 | Evaluation Criteria and Techniques | 1012 | OEC 024 | 120000 | 80 | 160 |
| 65 | Value for Money in M&E | 1013 | OEC 025 | 120000 | 80 | 160 |
| 66 | M&E Data Management and Systems | 1015 | OEC 026 | 120000 | 80 | 160 |
| 67 | Field Practical Attachment | 1016 | OEC 099 | 200000 | 140 | 280 |
| 68 | Delete-Field Practical Attachment | 1023 | 199 | 400000 | 280 | 560 |
| 69 | Field Practical Attachment | 1025 | OEC 199 | 400000 | 280 | 560 |
| 70 | Principles and Practice of CED | 1035 | CED 631 | 360000 | 200 | 400 |
| 71 | Economics for CED | 1039 | CED 632 | 360000 | 200 | 400 |
| 72 | Organizational Management for Community Organizations | 1040 | CED 633 | 360000 | 200 | 400 |
| 73 | Advanced Research Methodology for Social Scientists | 1042 | CED 634 | 360000 | 200 | 400 |
| 74 | Microenterprise Development for CED | 1044 | CED 635 | 360000 | 200 | 400 |
| 75 | Project Design and Management for CED | 1046 | CED 636 | 360000 | 200 | 400 |
| 76 | Sustainable Responses to Environmental Problems | 1048 | CED 637 | 360000 | 200 | 400 |
| 77 | Gender Issues in CED | 1049 | CED 638 | 360000 | 200 | 400 |
| 78 | MCED Dissertation Writing Skills | 1050 | CED 699 | 1080000 | 600 | 1200 |
| 79 | Concepts and Theories of Development | 1067 | ODS 101 A | 120000 | 80 | 160 |
| 80 | Introduction to Project Design and Management | 1519 | OEC 001 | 120000 | 80 | 160 |
| 81 | Monitoring and Evaluation Framework | 1520 | OEC 002 | 120000 | 80 | 160 |
| 82 | Social Science Research methods | 1521 | OEC 003 | 120000 | 80 | 160 |
| 83 | Basic Statistics for M&E | 1522 | OEC 004 | 120000 | 80 | 160 |
| 84 | Field Work Management | 1523 | OEC 005 | 120000 | 80 | 160 |
| 85 | M&E Ethics and Gender Aspects | 1524 | OEC 006 | 120000 | 80 | 160 |
| 86 | M&E Group Project | 1525 | OEC 007 | 400000 | 280 | 560 |
| 87 | Mathematics and Statistics for Economists | 1550 | OEC 123 | 120000 | 80 | 160 |
| 88 | Gender issues in CED | 1551 | CED 326 | 120000 | 80 | 160 |

Department of Political Science, Public Administration, History and Philosophy

| SN. | Course Name | Course ID | Course Code | Local | EAC (USD) | Non-SADC (USD) |
|-----|----------------------------------------------------|-----------|-------------|--------|-----------|----------------|
| 1 | Advanced Political theory | 631 | OPS 601 | 360000 | 200 | 400 |
| 2 | Introduction to African History | 640 | OHI 131 | 120000 | 80 | 160 |
| 3 | History of Tanzania to the Recent Past | 641 | OHI 132 | 120000 | 80 | 160 |
| 4 | International Cooperation and Development Policies | 642 | OIR 601 | 360000 | 200 | 400 |
| 5 | Governance, Leadership and Development | 643 | OPS 602 | 360000 | 200 | 400 |
| 6 | Advanced Research methodology | 644 | OPS 603 | 360000 | 200 | 400 |
| 7 | International Politics and Security | 645 | OIR 602 | 360000 | 200 | 400 |
| 8 | Leadership Ethics and Public Accountability | 646 | OPS 604 | 360000 | 200 | 400 |
| 9 | Political Parties, Democracy and Elections | 647 | OPS 605 | 360000 | 200 | 400 |

| | | | | | | |
|----|--------------------------------------------------------|------|---------|---------|-----|------|
| 10 | Organization Behaviour | 648 | OPS 606 | 360000 | 200 | 400 |
| 11 | Advanced Public Policy Analysis | 649 | OPS 607 | 360000 | 200 | 400 |
| 12 | Advanced Political Theory | 650 | OPS601 | 360000 | 200 | 400 |
| 13 | Theory and Practice in Africa History | 651 | OHI 133 | 120000 | 80 | 160 |
| 14 | Strategic Human Resource Management | 652 | OPS 608 | 360000 | 200 | 400 |
| 15 | Advanced Public Administrative Law | 655 | OPS 609 | 360000 | 200 | 400 |
| 16 | Advanced Research methodology | 656 | OPS 603 | 360000 | 200 | 400 |
| 17 | Advanced Study to Conflict and Crisis Management | 657 | OPS 610 | 360000 | 200 | 400 |
| 18 | African International Relations and Diplomacy | 659 | OIR 604 | 360000 | 200 | 400 |
| 19 | Dissertation | 662 | OPS 699 | 1080000 | 600 | 1200 |
| 20 | International Political Economy | 663 | OIR 603 | 360000 | 200 | 400 |
| 21 | Public International Law | 665 | OIR605 | 360000 | 200 | 400 |
| 22 | Crisis, Reconstruction and Development | 673 | OHA 601 | 360000 | 200 | 400 |
| 23 | Strategic Management of NGOs and Humanitarian Missions | 674 | OHA 602 | 360000 | 200 | 400 |
| 24 | Public Health and Humanitarian Issues | 677 | OHA 603 | 360000 | 200 | 400 |
| 25 | Introduction to Public Administration | 681 | OPA 101 | 120000 | 80 | 160 |
| 26 | Organization Theory and Public Bureaucracies | 684 | OPA 102 | 120000 | 80 | 160 |
| 27 | The Political History of Zanzibar | 687 | OHI 134 | 120000 | 80 | 160 |
| 28 | Local Government Administration in Tanzania | 688 | OPA 103 | 120000 | 80 | 160 |
| 29 | Administrative Law | 711 | OPA 201 | 180000 | 100 | 200 |
| 30 | Decision Making and Public Policy Analysis | 714 | OPA 202 | 120000 | 80 | 160 |
| 31 | Management of Human Resources | 717 | OPA 203 | 180000 | 100 | 200 |
| 32 | Organization Behaviour | 719 | OPA 204 | 120000 | 80 | 160 |
| 33 | Themes in African Prehistory | 720 | OHI 135 | 120000 | 80 | 160 |
| 34 | Budgeting and Financial Control in the Public Sector | 730 | OPA 301 | 180000 | 100 | 200 |
| 35 | History of East Africa to the Recent Past | 731 | OHI 231 | 120000 | 80 | 160 |
| 36 | Leadership and Governance | 734 | OPA 302 | 180000 | 100 | 200 |
| 37 | Industrial Relations | 738 | OPA 303 | 300000 | 70 | 210 |
| 38 | Strategic Management | 742 | OPA 304 | 180000 | 100 | 200 |
| 39 | Comparative Public Administration | 747 | OPA 305 | 180000 | 100 | 200 |
| 40 | History of West Africa | 748 | OHI 232 | 120000 | 80 | 160 |
| 41 | Democracy and Human Rights | 752 | OPS 320 | 120000 | 80 | 160 |
| 42 | Government and Politics in Africa | 757 | OPS 122 | 120000 | 80 | 160 |
| 43 | Europe Since the 19th Century | 765 | OHI 233 | 120000 | 80 | 160 |
| 44 | Introduction to the Study of Politics | 767 | OIR 101 | 120000 | 80 | 160 |
| 45 | Field Work/Industrial Attachment | 769 | OIA 200 | 120000 | 80 | 160 |
| 46 | History of Southern Africa | 772 | OHI 235 | 120000 | 80 | 160 |
| 47 | Public International Law | 802 | OIR 605 | 360000 | 200 | 400 |
| 48 | Public Health and Humanitarian Issues | 815 | OHA 603 | 360000 | 200 | 400 |
| 49 | Europe Since the 19th Century | 827 | OHI 236 | 120000 | 80 | 160 |
| 50 | History of West Africa | 1037 | OHI 332 | 120000 | 80 | 160 |
| 51 | History of North Africa | 1051 | OHI 333 | 120000 | 80 | 160 |
| 52 | The Black Diaspora in the Indian Ocean | 1068 | OHI 331 | 120000 | 80 | 160 |
| 53 | Introduction to Critical Thinking and Argumentation | 1440 | OPR 121 | 120000 | 80 | 160 |

| | | | | | | |
|----|------------------------------------------------|------|---------|--------|-----|-----|
| 54 | Political Thought | 1490 | OIR 102 | 120000 | 80 | 160 |
| 55 | Africa in the Global Context | 1491 | OIR 103 | 120000 | 80 | 160 |
| 56 | International Organizations | 1492 | OIR 104 | 120000 | 80 | 160 |
| 57 | Theories and Issues in International Relations | 1493 | OIR 201 | 180000 | 100 | 200 |
| 58 | International Political Economy | 1494 | OIR 202 | 180000 | 100 | 200 |
| 59 | Public International Law | 1495 | OIR 203 | 180000 | 100 | 200 |
| 60 | Foreign Policy and Diplomacy | 1496 | OIR 204 | 120000 | 80 | 160 |
| 61 | Global Governance | 1497 | OIR 301 | 180000 | 100 | 200 |
| 62 | Contemporary Issues in Global Politics | 1498 | OIR 302 | 180000 | 100 | 200 |
| 63 | Regional Integration | 1499 | OIR 303 | 180000 | 100 | 200 |
| 64 | Politics of Conflict Resolution | 1500 | OIR 304 | 180000 | 100 | 200 |
| 65 | Religious Phenomena | 1554 | OPR 124 | 120000 | 80 | 160 |
| 66 | Religious in Public Life | 1555 | OPR 125 | 120000 | 80 | 160 |
| 67 | Religion and Development | 1556 | OPR 126 | 120000 | 80 | 160 |
| 68 | Philosophy of Religion | 1557 | OPR 221 | 120000 | 80 | 160 |
| 69 | Interreligious Peace and Reconciliation | 1558 | OPR 224 | 120000 | 80 | 160 |

FASS FEES per programme

| Undergraduate programmes | | | | | | | |
|--------------------------|--------------------------------------------------------------|-------------------|-------------|---------------|-------------|-----------------|-----------|
| S/N | Program title | Duration (Months) | Total Units | Cost per Unit | Tuition Fee | Non-Tuition Fee | TOTAL |
| 1 | Bachelor of Arts in Tourism Management (B.A Tourism) | 36 | 38 | 60,000 | 2,280,000 | 530,000 | 2,810,000 |
| 2 | Bachelor of Arts in Sociology (B.A SO) | 36 | 38 | 60,000 | 2,280,000 | 530,000 | 2,810,000 |
| 3 | Bachelor of Arts in Social Work (BA (SW) | 36 | 38 | 60,000 | 2,280,000 | 530,000 | 2,810,000 |
| 4 | Bachelor of Arts in Journalism (BA (Journalism) | 36 | 36 | 60,000 | 2,160,000 | 530,000 | 2,690,000 |
| 5 | Bachelor of Arts in Mass Communication (BA (MC) | 36 | 36 | 60,000 | 2,160,000 | 530,000 | 2,690,000 |
| 6 | Bachelor of Arts in Economics (BA Econ) | 36 | 36 | 60,000 | 2,160,000 | 530,000 | 2,690,000 |
| 7 | Bachelor of Arts in Kiswahili and Creative Studies (B.A KCS) | 36 | 36 | 60,000 | 2,160,000 | 530,000 | 2,690,000 |
| 8 | Bachelor of Library & Information Management (BLIM) | 36 | 38 | 60,000 | 2,280,000 | 530,000 | 2,810,000 |
| 9 | Bachelor of Community Economic Development (BCED) | 36 | 36 | 60,000 | 2,160,000 | 530,000 | 2,690,000 |
| 10 | Bachelor of Arts in Natural Resources Management (B.A NRM) | 36 | 36 | 60,000 | 2,400,000 | 530,000 | 2,930,000 |
| 11 | Bachelor of Arts in Population and Development (BA PD) | 36 | 36 | 60,000 | 2,160,000 | 530,000 | 2,930,000 |
| 12 | Bachelor of Arts in international Relations (BAIR) | 36 | 36 | 60,000 | 2,160,000 | 530,000 | 2,690,000 |
| 13 | Bachelor of Arts in Public Administration (BAPA) | 36 | 36 | 60,000 | 2,160,000 | 530,000 | 2,690,000 |

| Postgraduate programmes | | | | | | | |
|--------------------------------|-----------------------------------------------------------------------|--------------------------|--------------------|----------------------|--------------------|------------------------|--------------|
| S/N | Program Title | Duration (Months) | Total Units | Cost per Unit | Tuition Fee | Non-Tuition Fee | Total |
| 1. | Post Graduate Diploma in Social Work (PGDSW) | 12 | 12 | 180,000 | 2,160,000 | 270,000 | 2,430,000 |
| 2. | Master of Arts in Mass Communication | 18 | 18 | 180,000 | 3,240,000 | 270,000 | 3,510,000 |
| 3. | Master of Social Work (MSW) | 18 | 18 | 180,000 | 3,240,000 | 270,000 | 3,510,000 |
| 4. | Master of Arts in Gender Studies (MA GS) | 18 | 18 | 180,000 | 3,240,000 | 270,000 | 3,510,000 |
| 5 | Master of Science in Economics (MSc Econ) | 18 | 18 | 180,000 | 3,240,000 | 270,000 | 3,510,000 |
| 6. | Master in Community Economic Development (MCED) | 18 | 18 | 180,000 | 3,240,000 | 270,000 | 3,510,000 |
| 7. | Master in Tourism Planning Management (MTPM) | 18 | 18 | 180,000 | 3,240,000 | 270,000 | 3,510,000 |
| 8. | Masters of Arts in History (MA History) | 18 | 18 | 180,000 | 3,240,000 | 270,000 | 3,510,000 |
| 9. | Master of Arts in Natural Resource Assessment and Management (MANRAM) | 18 | 18 | 180,000 | 3,240,000 | 270,000 | 3,510,000 |
| 10. | Masters of Humanitarian Action, Cooperation and Development | 18 | 18 | 180,000 | 3,240,000 | 270,000 | 3,510,000 |
| 11. | Master of Arts in international Development and Cooperation (MA.ICD) | 18 | 18 | 180,000 | 3,240,000 | 270,000 | 3,510,000 |
| 12. | Master of Arts in Governance and Leadership (MA.GL) | 18 | 18 | 180,000 | 3,240,000 | 270,000 | 3,510,000 |
| 13 | Master of Arts in Kiswahili (MA Kiswahili) | 18 | 18 | 180,000 | 3,240,000 | 270,000 | 3,510,000 |
| 14. | Master of Arts in Linguistics (by Thesis) | 18 | | | | | 4,370,000.00 |
| 15 | Master of Arts in Literature (by thesis) | 18 | | | | | 4,370,000.00 |
| 16 | Master of Arts in Library and Information Management (MLIM) | 18 | 18 | 180,000 | 3,240,000 | 270,000 | 3,510,000 |
| 17 | Master of Arts in Monitoring and Evaluation (MA M&E) | 18 | 18 | 180,000 | 3,240,000 | 270,000 | 3,510,000 |
| 18 | Master of Arts in Sociology | 18 | 18 | 180,000 | 3,240,000 | 270,000 | 3,510,000 |
| 19. | Master of Arts in Journalism | 18 | 18 | 180,000 | 3,240,000 | 410,000 | 3,650,000 |
| 20 | Doctor of Philosophy | 36 | 18 | 180,000 | 8,850,000 | 210,000 | 9,060,000 |